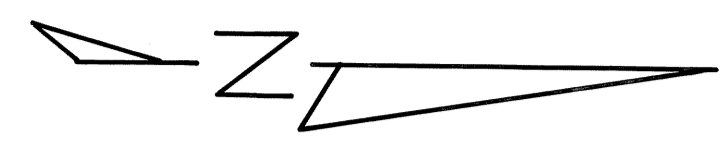
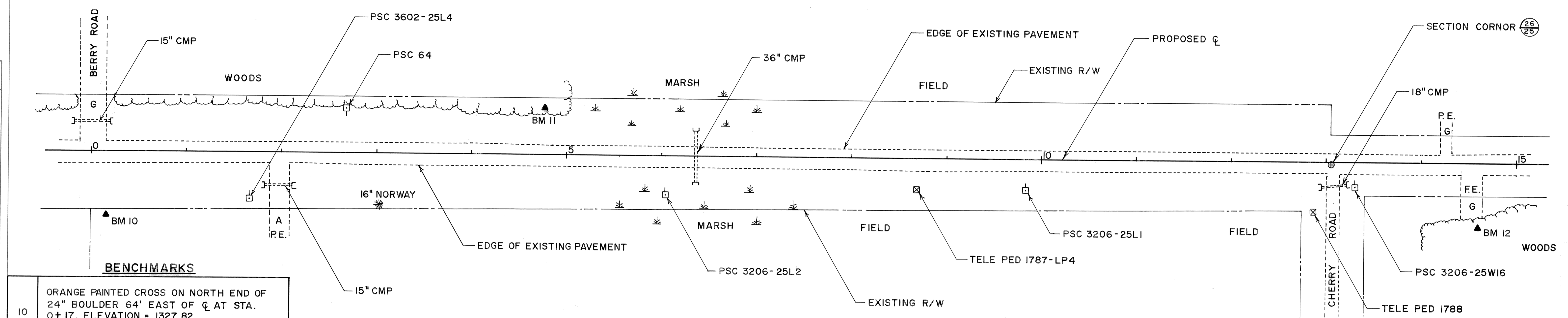


ARVEY CORP.

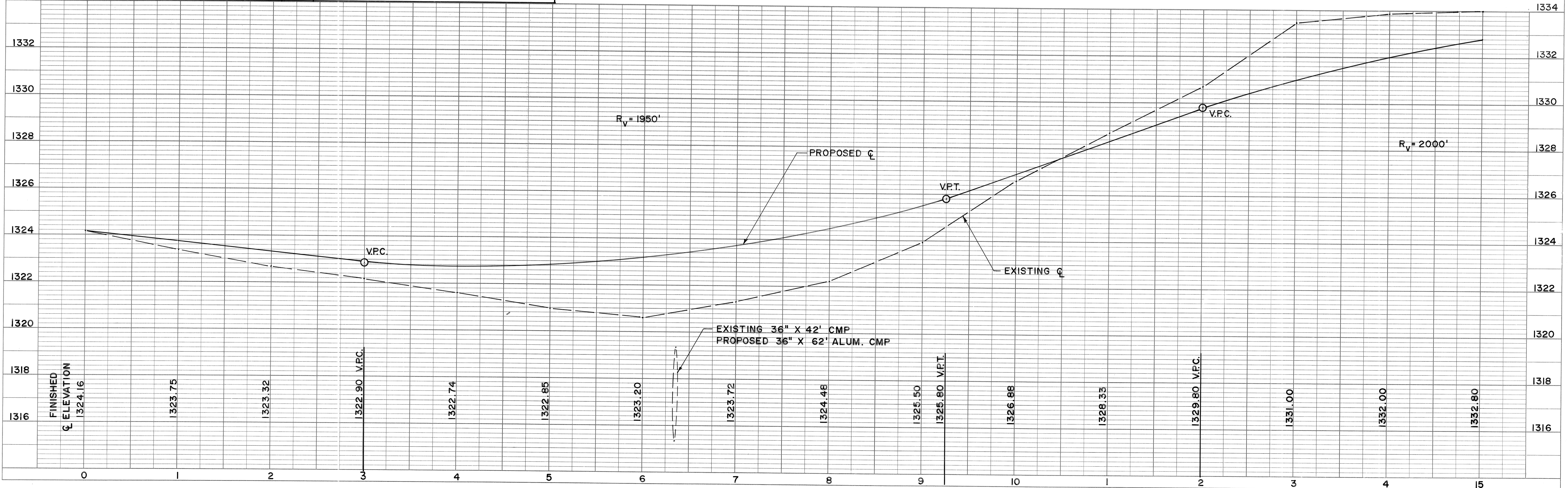


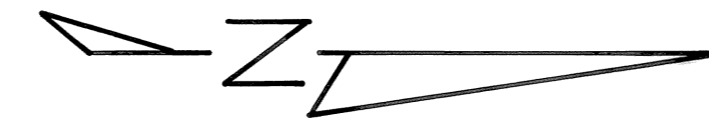
DATE	
BY	
SURVEYED	
ALIGNED	
GRADES CHECKED	
RT. OF WAY CHECKED	
NO. 10	

DATE	
BY	
SURVEYED	
GRADES CHECKED	
B.M.'S NOTED	
STRUCTURE NOTATIONS CHECKED	
NO. 11	



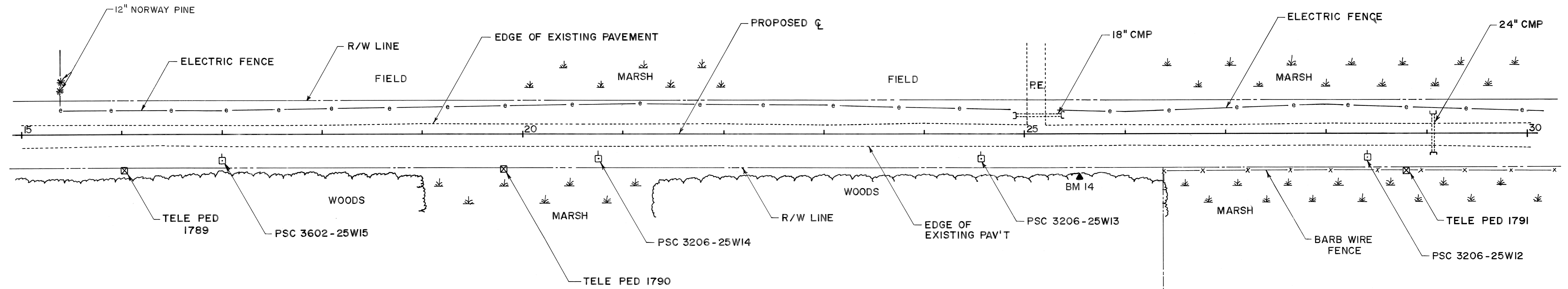
NO.	DESCRIPTION	ELEVATION
10	ORANGE PAINTED CROSS ON NORTH END OF 24" BOULDER 64' EAST OF CL AT STA. 0+17. ELEVATION = 1327.82	1327.82
11	3" SPIKE W/ORANGE TAB 18" OFF OF THE GROUND ON THE EAST FACE OF A 16" POPLAR 48' WEST OF CL AT STA. 4+78. ELEVATION = 1319.66	1319.66
12	3" SPIKE W/ORANGE TAB 18" OFF OF THE GROUND ON THE WEST FACE OF A 12" NORWAY PINE 67' EAST OF CL AT STA. 14+58. ELEVATION = 1336.62	1336.62





ARVEY CORP.

PLAN
 SURVEYED, PLOTTED, GRAPHS CHECKED, STRUCTURE NOTATIONS OK'D
 BY: _____ DATE: _____
 NOTE BOOK NO. _____



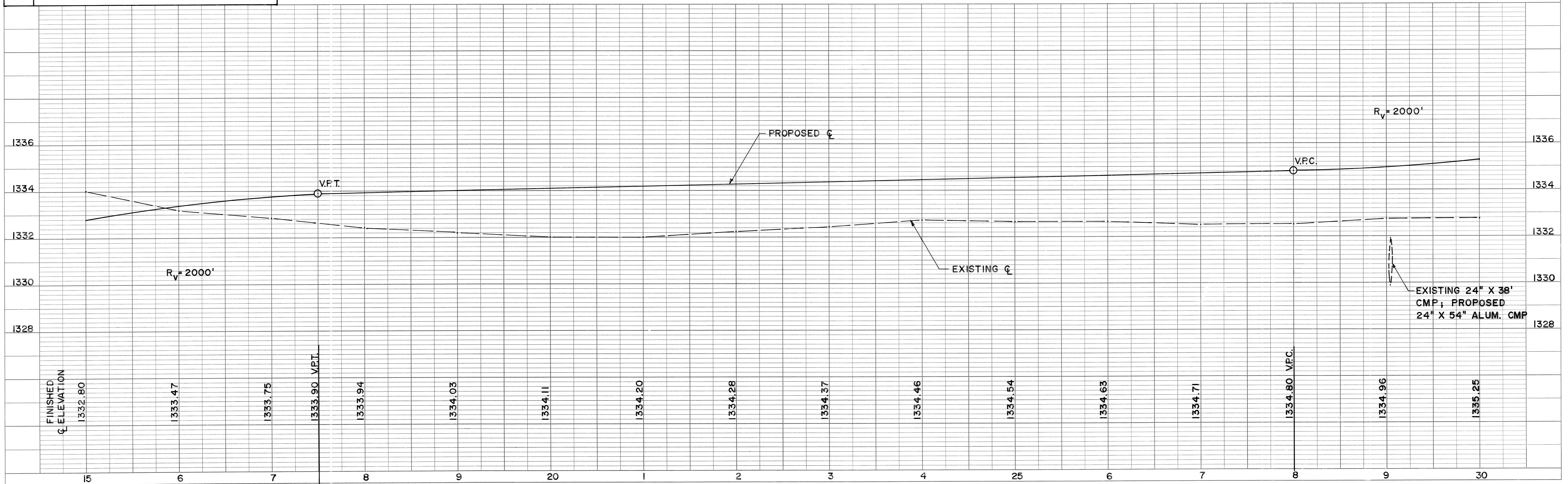
BENCHMARKS

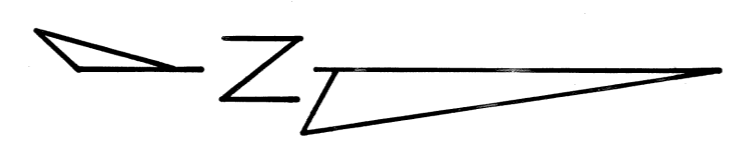
14	3" SPIKE W/ORANGE TAB 18" OFF THE GROUND ON WEST FACE OF A 10" WHITE BIRCH 42' EAST OF ϕ AT STA. 25+54. ELEVATION = 1332.87.
----	---

LEO & EDITH BORELLI

ANGELO & CLARA RICCI

PROFILE
 SURVEYED, PLOTTED, GRAPHS CHECKED, STRUCTURE NOTATIONS OK'D
 BY: _____ DATE: _____
 NOTE BOOK NO. _____



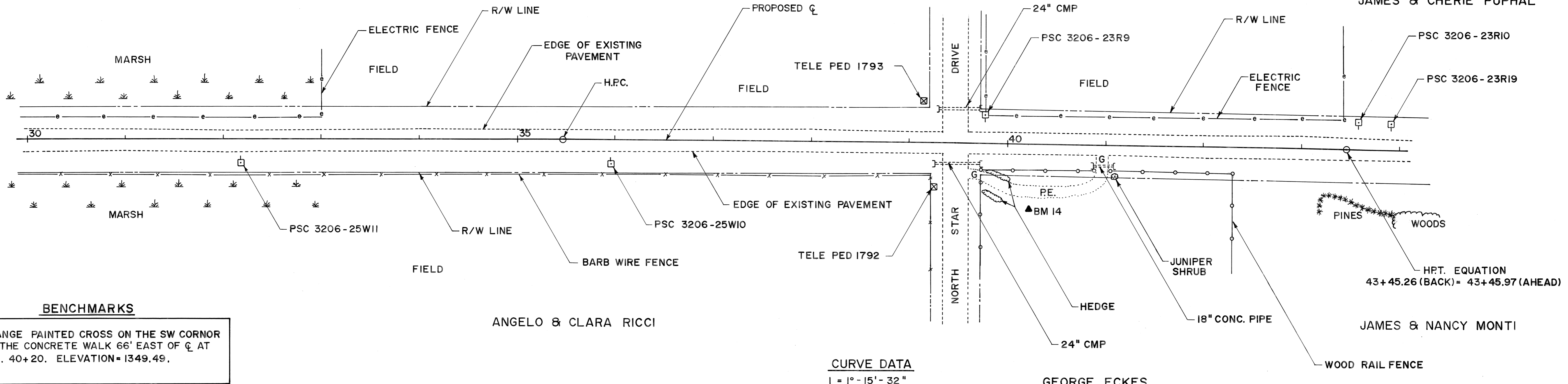


AVERY CORP

LEONARD DUGINSKI

JAMES & CHERIE PUPHAL

PLAN
 SURVEYED _____ DATE _____
 NOTE BOOK _____
 ALIGNMENT CHECKED _____
 RT. OF WAY CHECKED _____
 NO. _____



BENCHMARKS

14 ORANGE PAINTED CROSS ON THE SW CORNER OF THE CONCRETE WALK 66' EAST OF CL AT STA. 40+20. ELEVATION= 1349.49.

CURVE DATA
 I = 1° - 15' - 32"
 R_H = 36,409'

PROFILE
 SURVEYED _____ DATE _____
 NOTE BOOK _____
 GRADES CHECKED _____
 STRUCTURE NOTATIONS CHECKED _____
 NO. _____

