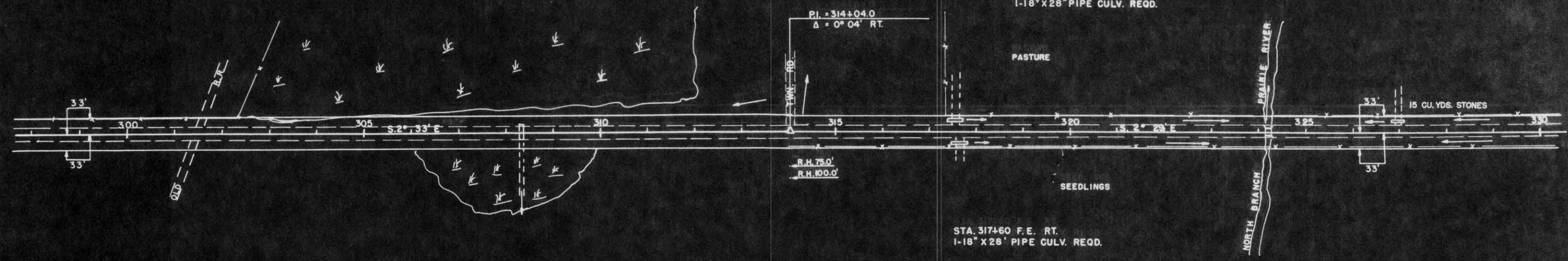




DATE: 1-55
 BY: C.W.
 CHECKED: R.W.
 SURVEYED: []
 PLOTTED: []
 NOTE BOOK: []
 ALIGNMENT CHECKED: []
 RT. OF WAY CHECKED: []
 NO. 0483

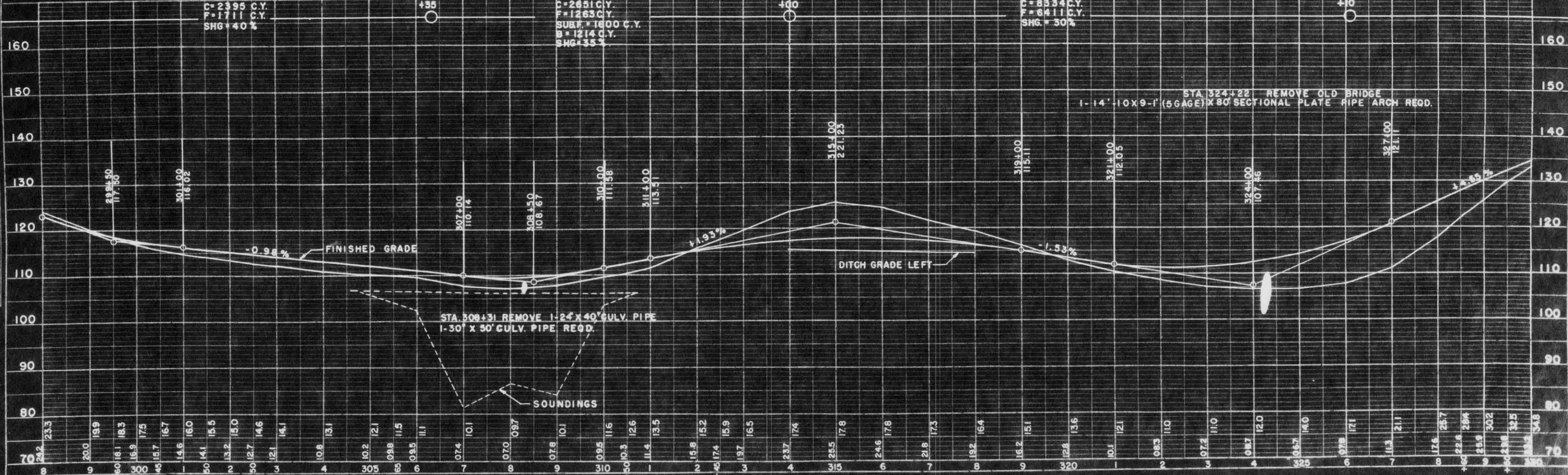


STA. 317+50 F.E. LT.
 1-18" X 28" PIPE CULV. REQD.

STA. 326+96 P.E. LT.
 1-18" X 28" PIPE CULV. REQD.

BENCH MARKS			
NO	STATION	DESCRIPTION	ELEV
31	308+50	SPIKE IN 12" Y. BIRCH 55' LT.	108.47
32	321+85	SPIKE IN 30" TR. ELM 40' LT.	108.80
33	337+00	SPIKE IN 5" POPLAR 110' LT.	152.66

NET LENGTH OF CENTERLINE STA. 300+00 - STA. 330+00 = 3000 LIN. FT.



DATE: 1-55
 BY: C.W.
 CHECKED: R.W.
 SURVEYED: []
 PLOTTED: []
 NOTE BOOK: []
 STRUCTURE NOTATION: []
 NO. 0427