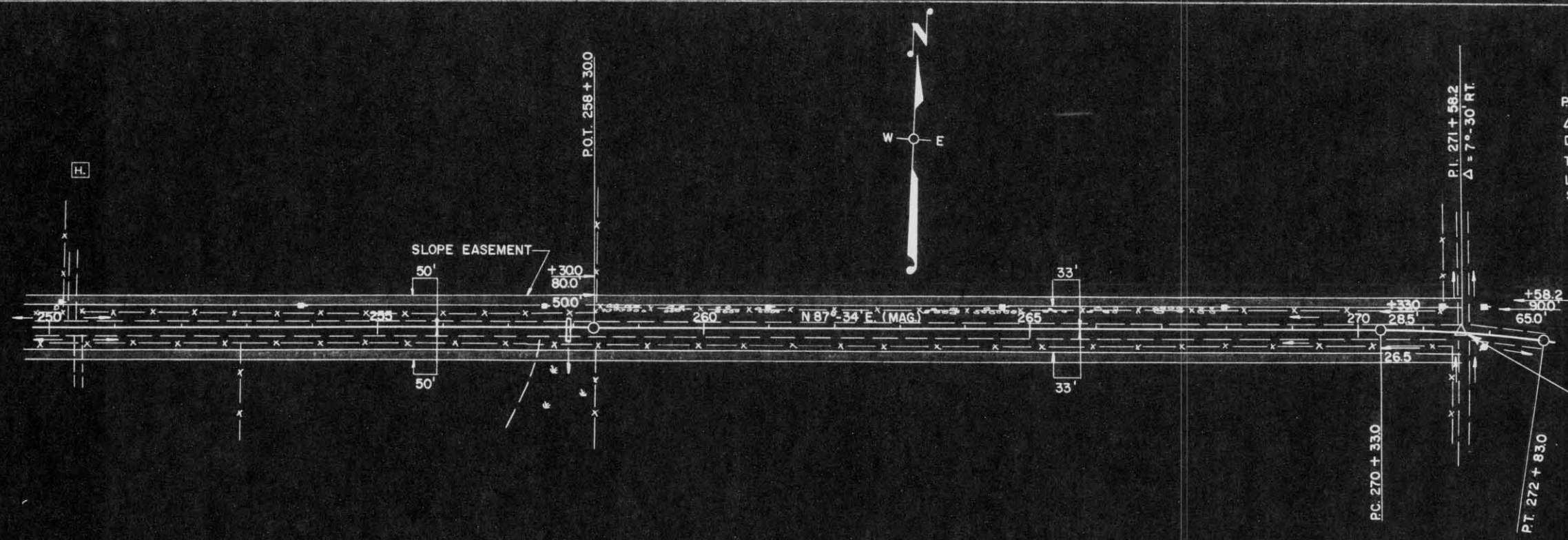


P.I. - 271 + 58.2
 Δ - 7° - 30' RT.
 D - 3°
 T - 125.2'
 L - 250.0'
 S.E. 0.05'/FT.
 TRANS 180FT.

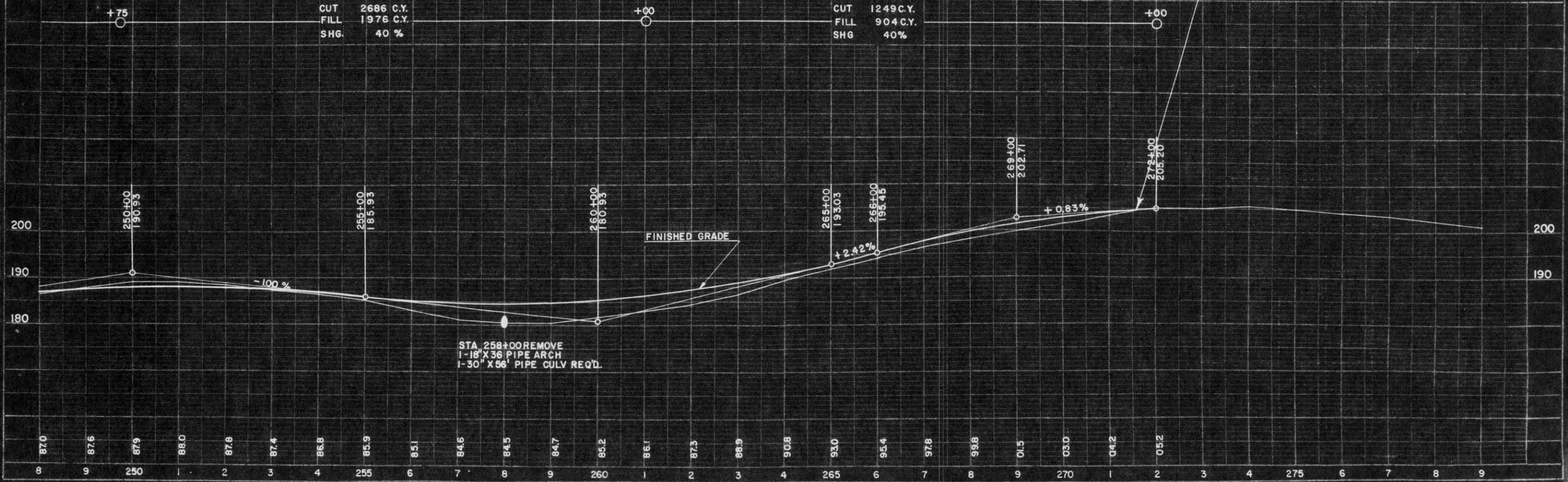


STA. 271 + 58 END OF PROJECT
 S 1184(I)

BENCH MARKS

NO.	STATION	DESCRIPTION	ELEV.
77	257+95	SPIKE IN 8" ASH 70' RT.	179.18
78	272+25	" " 12" BALSAM 100' LT.	203.97

NET CENTER LINE LENGTH STA. 250+00 - STA. 271+58 = 2158 FT.



CUT 2686 C.Y.
 FILL 1976 C.Y.
 SHG. 40%

CUT 1249 C.Y.
 FILL 904 C.Y.
 SHG. 40%

STA 258+00 REMOVE
 1-18" X 36" PIPE ARCH
 1-30" X 56" PIPE CULV REQ'D.

PLAN
 SHEET NO. 8276

PROFILE
 SHEET NO. 8253