

INDEX OF SHEETS

- SHEET NO. 1 TITLE
- SHEET NO. 2 TYPICAL CROSS SECTIONS
- SHEET NO. 2 ESTIMATE OF QUANTITIES
- SHEET NO. — MISCELLANEOUS QUANTITIES
- SHEET NO. — RIGHT OF WAY PLAT
- SHEET NO. 3-6 PLAN AND PROFILE STA. 6+00 TO STA. 112 +70
- SHEET NO. 7-10 STANDARD DETAILS
- SHEET NO. — DRAINAGE STRUCTURES
- SHEET NO. 11-25 CROSS SECTIONS



STATE OF WISCONSIN
STATE HIGHWAY COMMISSION OF WISCONSIN

PLAN AND PROFILE OF PROPOSED
BLOOMVILLE-C.T.H. "X" ROAD
C.T.H. "J"
LINCOLN COUNTY
PROJECT S0570(5)

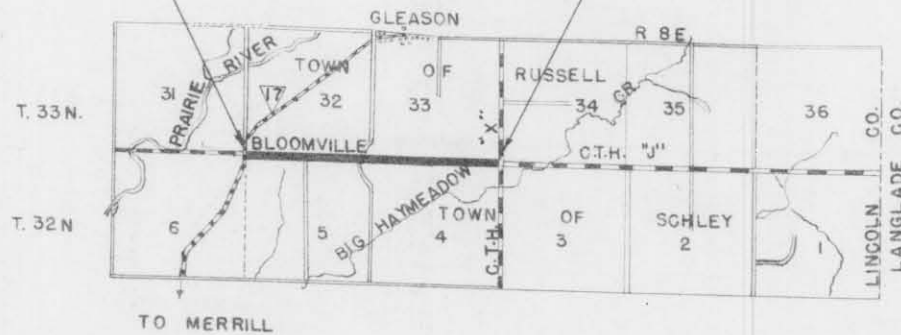
BEGINNING AT A POINT ± 19 FT EAST OF THE SOUTH WEST CORNER
OF SECTION 32, T33N, R8E AND EXTENDING EASTERLY TO THE
SOUTHWEST CORNER OF SECTION 34, T33N, R8E

SCALES { PLAN 1 IN. = 100 FT.
 { PROFILE HOR. 1 IN. = 100 FT. VERT. 1 IN. = 10 FT.
 { CROSS SECTIONS HOR. 1 IN. = 5 FT. VERT. 1 IN. = 5 FT.

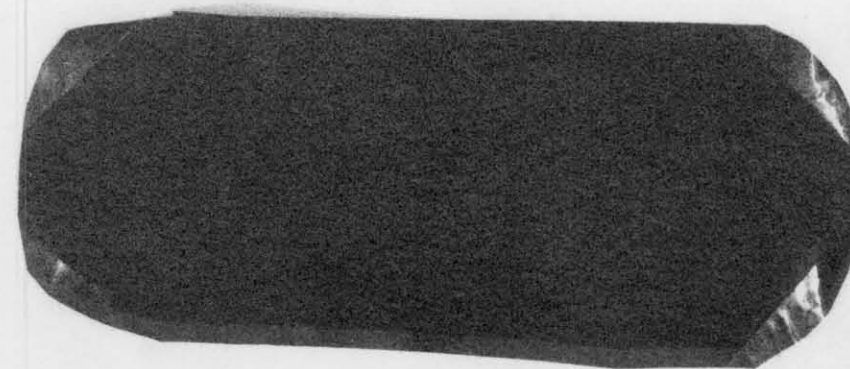
COUNTY AND HIGHWAY	ROUTE AND SECTION	CLASS AND AGREEMENT		FEDERAL DIVISION OFFICE	SHEET NUMBER	TOTAL SHEETS
		STATE	FEDERAL			
35.6	570.0		11.5	WIS. 4	1	25

STA. 6+00 BEGINNING OF PROJECT S0570(5)

STA. 112+70 = END OF PROJECT S0570(5) = BEGINNING OF PROJECT S1184(1)



TO MERRILL



CONVENTIONAL SIGNS

STATE LINE	-----	CULVERTS IN PLACE	-----
COUNTY LINE	-----	CULVERTS REQUIRED	-----
TOWNSHIP OR RANGE LINE	-----	DROP INLET	-----
SECTION LINE	-----	POWER POLE	-----
NEW RIGHT OF WAY LINE	-----	TELEPHONE OR TELEGRAPH POLE	-----
PRESENT RIGHT OF WAY LINE	-----	RIGHT OF WAY MARKERS	-----
WIRE FENCE (WOVEN)	-----	REFERENCE STAKE FOR HUBS ONLY	-----
WIRE FENCE (BARBED)	-----	MARSH	-----
LOT LINE	-----	HEDGE	-----
CORPORATE OR CITY LIMITS	-----	TREES	-----
PROPERTY LINE	-----	GROUND ELEVATION	DATUM LINE 73.0
TRAVELED WAY OR P.E.	-----	GRADE ELEVATION	DATUM LINE 75.16
RAILROADS	-----		
BASE OR SURVEY LINE	-----		

LAYOUT
SCALE 0 1 MILE
TOTAL NET LENGTH OF CENTERLINE = 2.021 MI.

STATE HIGHWAY COMMISSION OF WISCONSIN
MADISON, WIS.

SURVEYOR D.G.S. NOTE BOOK 8276-8273
 DIVISION COMPLETER D.C.S. H. D. CHECKER
 DISTRICT CHECKER E.H.M. CORRECT

CORRECT:
 DATE 8/14/58 Max Jutt DISTRICT ENGINEER

RECOMMENDED FOR APPROVAL:
 DATE 8/20/58 J.P. Kelly CHIEF OF DESIGN

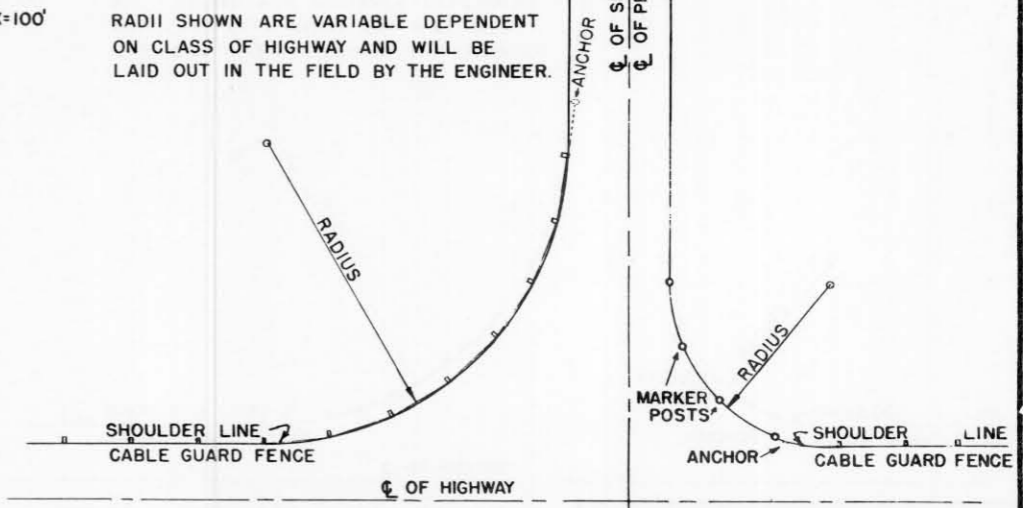
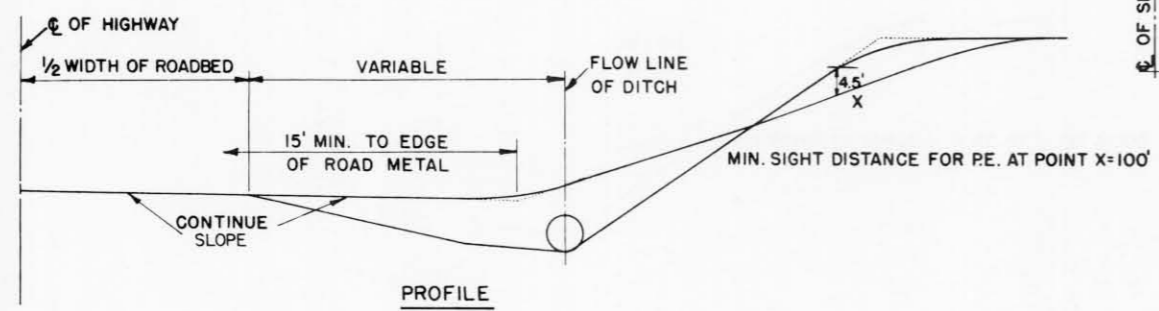
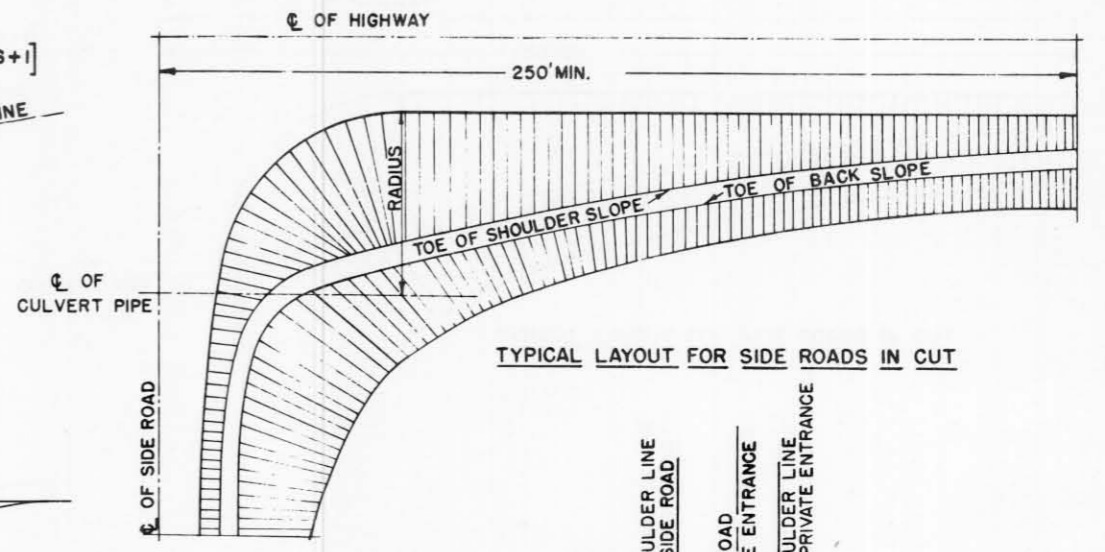
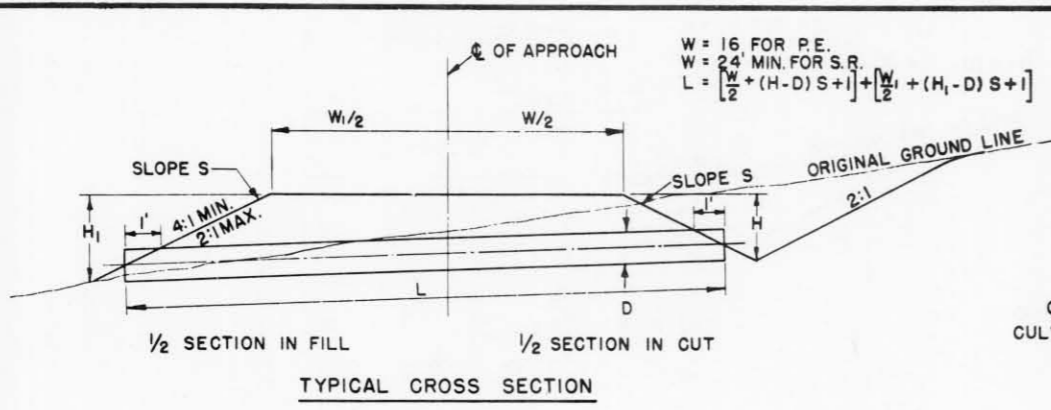
APPROVED:
 DATE 8/20/58 E.C. Rustigen STATE HIGHWAY ENGINEER

DEPARTMENT OF COMMERCE
 BUREAU OF PUBLIC ROADS

APPROVED: _____

 DISTRICT ENGINEER

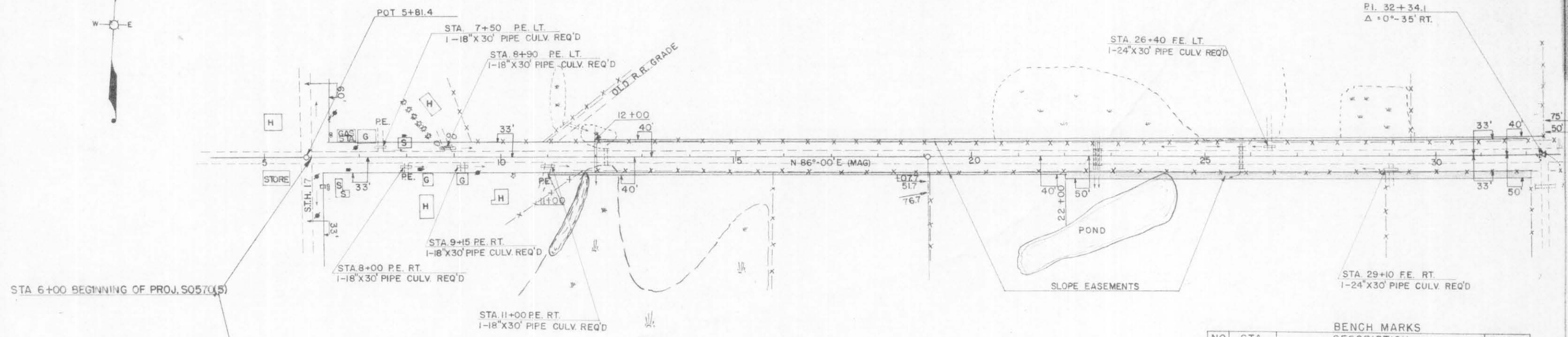
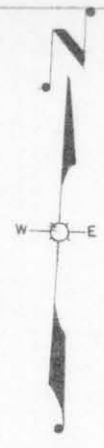
S 0570(5)



RADIi SHOWN ARE VARIABLE DEPENDENT ON CLASS OF HIGHWAY AND WILL BE LAID OUT IN THE FIELD BY THE ENGINEER.

DETAILS OF PRIVATE ENTRANCE AND SIDE ROAD APPROACHES

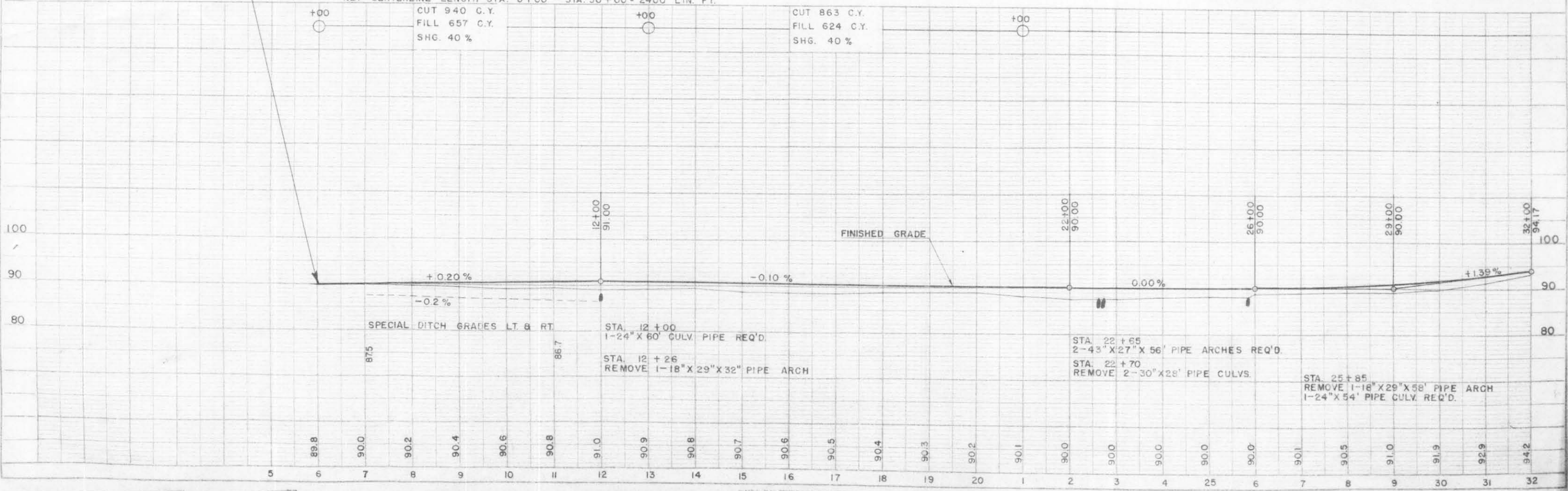
STATE HIGHWAY COMMISSION OF WISC.
 RECOMMENDED FOR APPROVAL:
 Frank Crow
 DESIGN ENGINEER
 M. Bluh
 CONSTRUCTION ENGINEER
 DATE
 APPROVED: OCT. 1, 1945
 DRAWN
 DATE
 CHECKED
 STATE HIGHWAY ENGINEER



STA 6+00 BEGINNING OF PROJ. S0570(5)

BENCH MARKS			
NO.	STA.	DESCRIPTION	ELEV.
53	5+50	N.E. COR. STEP PLATFORM ON STORE 45' RT.	91.73
54	13+00	SPIKE IN 14" TAMARACK	75' LT. 91.30
55	23+60	SPIKE IN 10" ELM	80' LT. 87.52
56	28+70	SPIKE IN 16" ELM	120' RT. 87.26

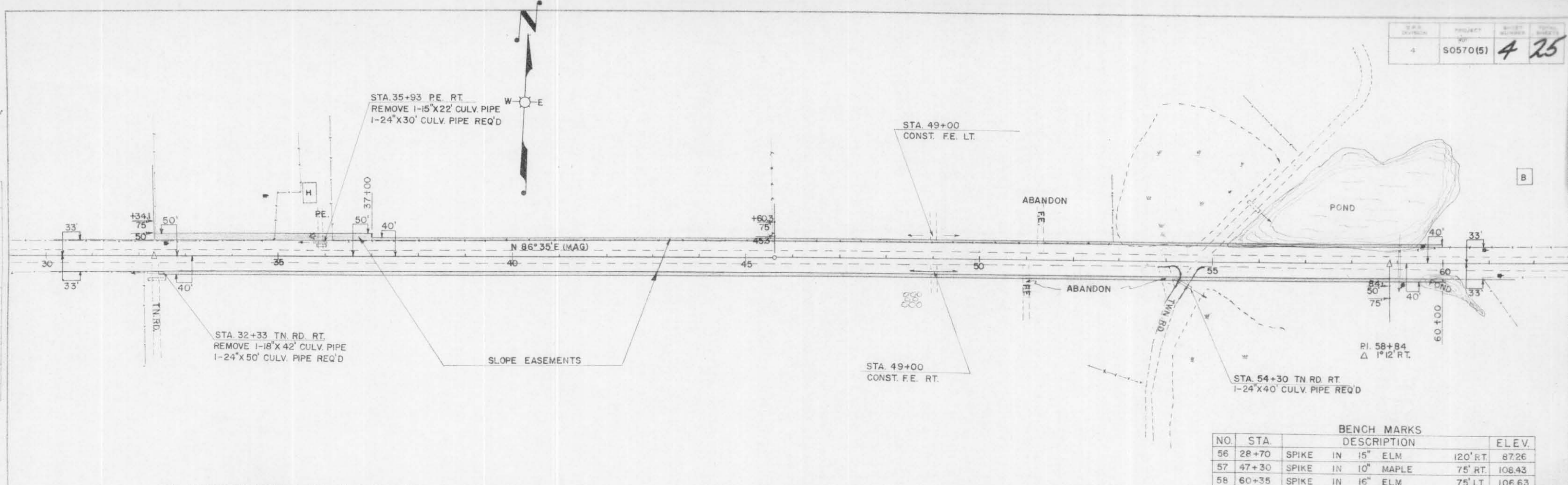
NET CENTERLINE LENGTH STA. 6+00 - STA. 30+00 = 2400 LIN. FT.



PLAN
 SURVEYED
 PLANNED
 ALIGNED
 CHECKED
 DATE
 NO. 8276

PROFILE
 SURVEYED
 PLANNED
 ALIGNED
 CHECKED
 DATE
 NO. 8273

PLAN
 SHEET NO. 8276
 DATE

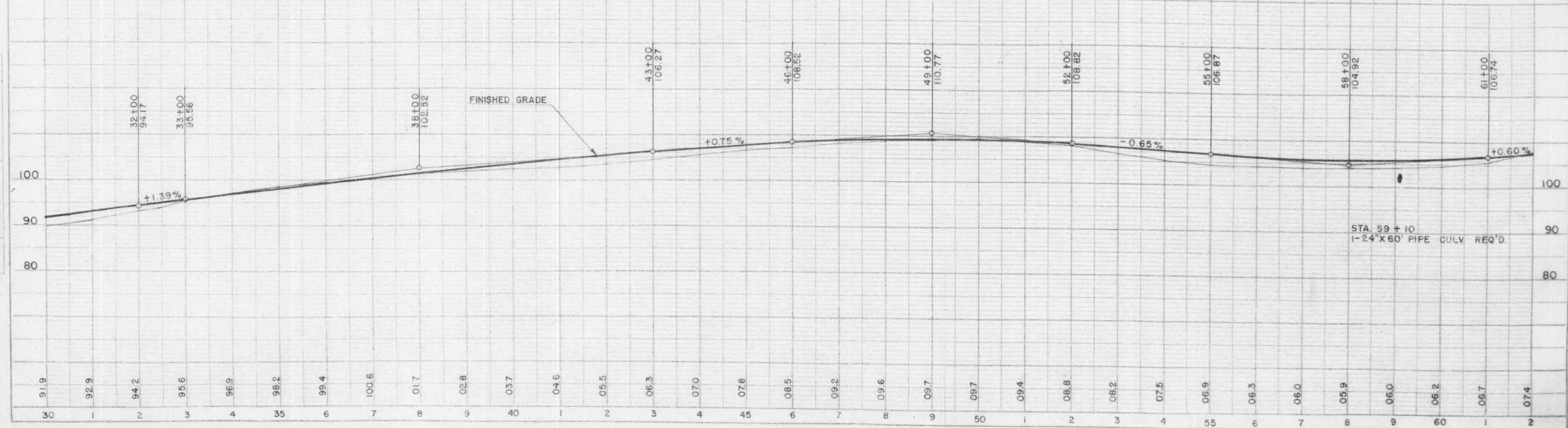


BENCH MARKS

NO.	STA.	DESCRIPTION	ELEV.
56	28+70	SPIKE IN 15" ELM 120' RT.	87.26
57	47+30	SPIKE IN 10" MAPLE 75' RT.	108.43
58	60+35	SPIKE IN 16" ELM 75' LT.	106.63

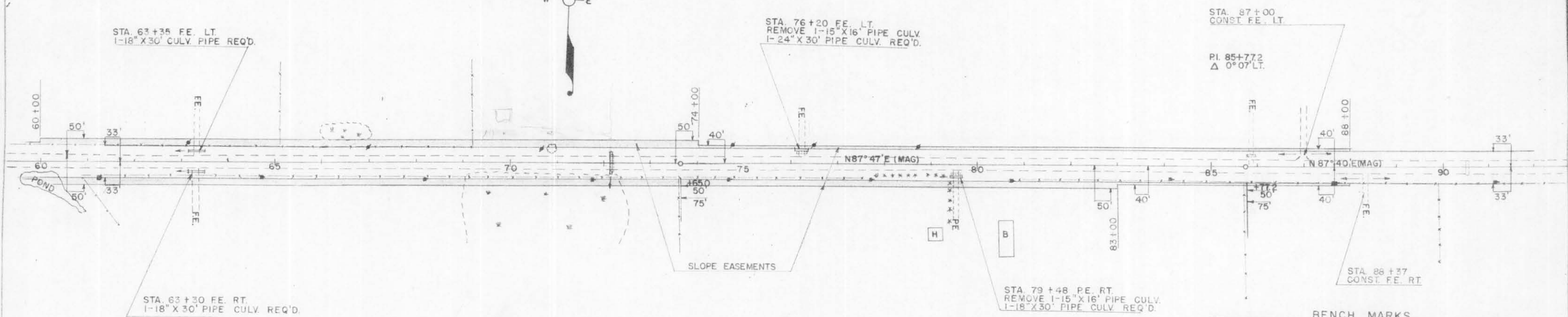
NET CENTERLINE LENGTH STA. 30+00 - STA. 60+00 = 3000 LIN. FT.
 CUT 2,597 C.Y.
 FILL 1,791 C.Y.
 SHG. 40%

CUT 2,630 C.Y.
 FILL 1,879 C.Y.
 SHG. 40%



PROFILE
 SHEET NO. 8273
 DATE

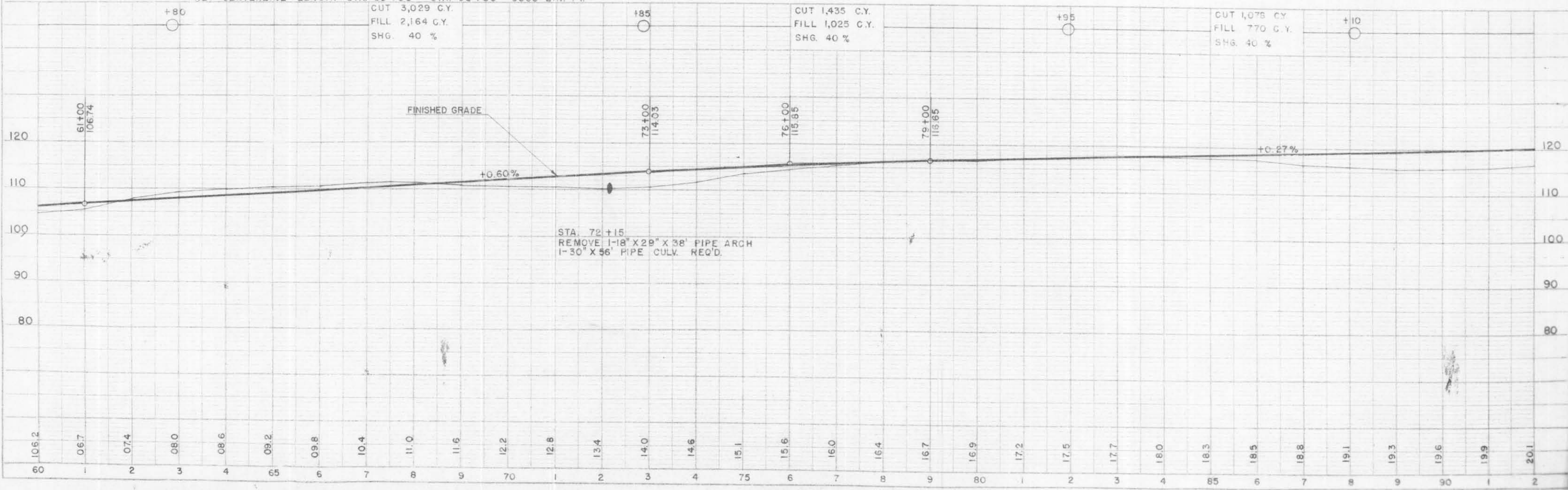
DOE OLIVES



BENCH MARKS

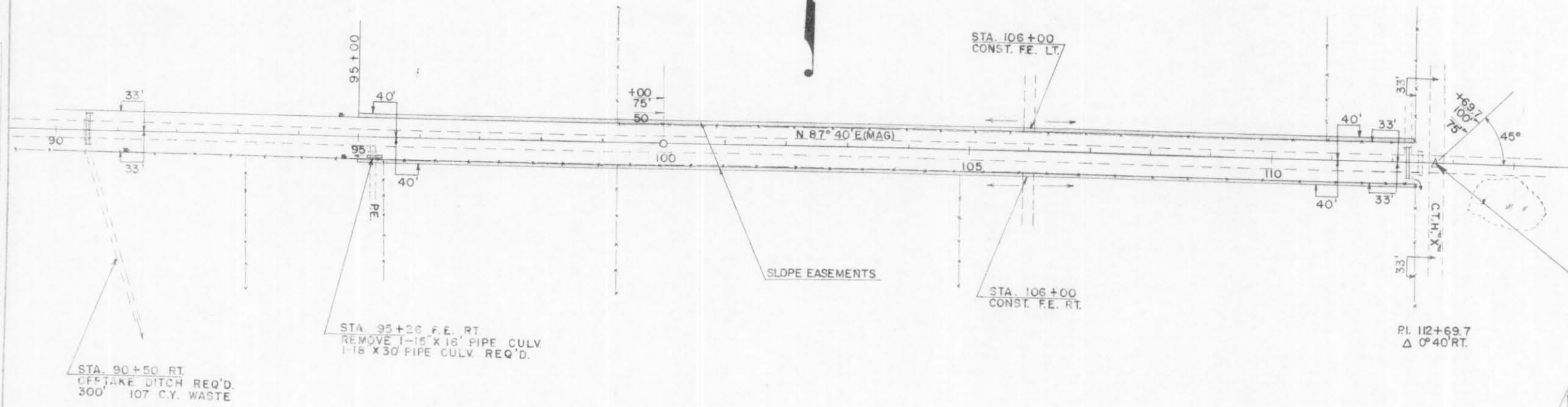
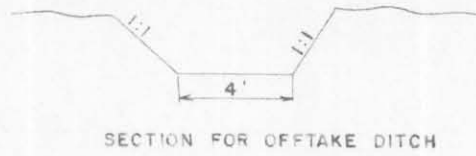
NO.	STATION	DESCRIPTION	ELEV.
58	60+35	SPIKE IN 16" ELM	75' LT. 106.63
59	69+05	" " 8" ELM	80' LT. 111.55
60	77+85	" " 20" PINE	65' RT. 116.72
61	90+80	" " 5" ASH	100' RT. 115.73

NET CENTERLINE LENGTH STA. 60+00 - STA. 90+00 = 3000 LIN. FT.



PLAN
 SURVEYED
 PLOTTED
 NOTE BOOK
 ALIGNED CHECKED
 # 8276

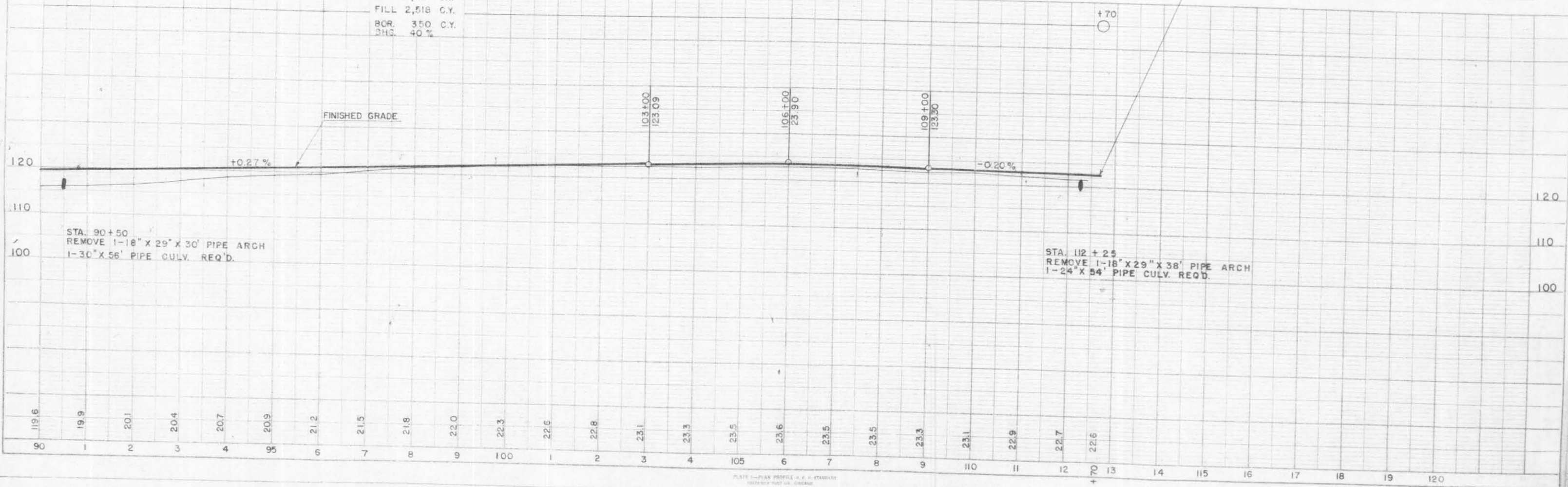
PROFILE
 SURVEYED
 PLOTTED
 NOTE BOOK
 CHECKED
 # 8275



NET CENTERLINE LENGTH STA. 90+00 - STA. 112+70 = 2270 LIN. FT.

CUT 3,177 C.Y.
 FILL 2,518 C.Y.
 BOR. 350 C.Y.
 SHC. 40%

BENCH MARKS				
NO.	STATION	DESCRIPTION		ELEV.
61	90+80	SPIKE IN 5" ASH	100' RT.	115.73
62	105+80	" " 6" ASPEN	80' LT.	123.79
63	113+25	" " 14" MAPLE	110' RT.	120.44



PLAN
 DRAWN BY
 CHECKED BY
 DATE
 8276

PROFILE
 DRAWN BY
 CHECKED BY
 DATE
 8273