

INDEX OF SHEETS

SHEET NO. 1	TITLE
SHEET NO. 2	TYPICAL CROSS SECTIONS
SHEET NO. 2	ESTIMATE OF QUANTITIES
SHEET NO. 2A	MISCELLANEOUS QUANTITIES
SHEET NO. —	RIGHT OF WAY PLAT
SHEET NO. 3-7	PLAN AND PROFILE STA. 10+15 TO STA. 149+98
SHEET NO. 8-11	STANDARD DETAILS
SHEET NO. 12-13	CROSS SECTIONS
SHEET NO. 14-21	I. B. M. COMPUTATIONS



STATE OF WISCONSIN
STATE HIGHWAY COMMISSION OF WISCONSIN

PLAN AND PROFILE OF PROPOSED
S.T.H. 107—IRMA ROAD
C.T.H. "J"
LINCOLN COUNTY
PROJECT S0570(6)

COUNTY AND HIGHWAY	ROUTE AND SECTION	CLASS AND AGREEMENT		S.P.A. REGION DIVISION	SHEET NUMBER	TOTAL SHEETS
		STATE	FEDERAL			
35.6	570.0		11.6	4 WIS.	1	21

PLAN 1 IN. = 100 FT.
PROFILE HOR. 1 IN. = 100 FT. VERT. 1 IN. = 10 FT.
CROSS SECTIONS HOR. 1 IN. = 5 FT. VERT. 1 IN. = 5 FT.

APPROVED FOR LINCOLN COUNTY

Francis X Fox

5-2-60 CO. HIGHWAY COMMISSIONER
Date Title



END OF PROJ. S0570(6)
STA. 149+98
489.5 E OF SEC. COR.
SEC. 12, 13 T 33N R6E
AND SEC. 7, 18 T 33N R7E

BEGIN PROJ. S0570(6)
STA. 10+15
150' W. OF THE S 1/4 COR. OF
SEC. 10 T 33N R6E

CONVENTIONAL SIGNS

STATE LINE	-----	CULVERTS IN PLACE	-----
COUNTY LINE	-----	CULVERTS REQUIRED	-----
TOWNSHIP OR RANGE LINE	-----	DROP INLET	-----
SECTION LINE	-----	POWER POLE	-----
NEW RIGHT OF WAY LINE	-----	TELEPHONE OR TELEGRAPH POLE	-----
PRESENT RIGHT OF WAY LINE	-----	RIGHT OF WAY MARKERS	-----
WIRE FENCE { WOVEN	-----	REFERENCE STAKE FOR HUBS ONLY	-----
{ BARBED	-----	MARSH	-----
LOT LINE	-----	HEDGE	-----
CORPORATE OR CITY LIMITS	-----	TREES	-----
PROPERTY LINE	-----	GROUND ELEVATION	DATUM LINE 73.9
TRAVELED WAY OR P.E.	-----	GRADE ELEVATION	DATUM LINE 75.16
RAILROADS	-----		
BASE OR SURVEY LINE	-----		

LAYOUT

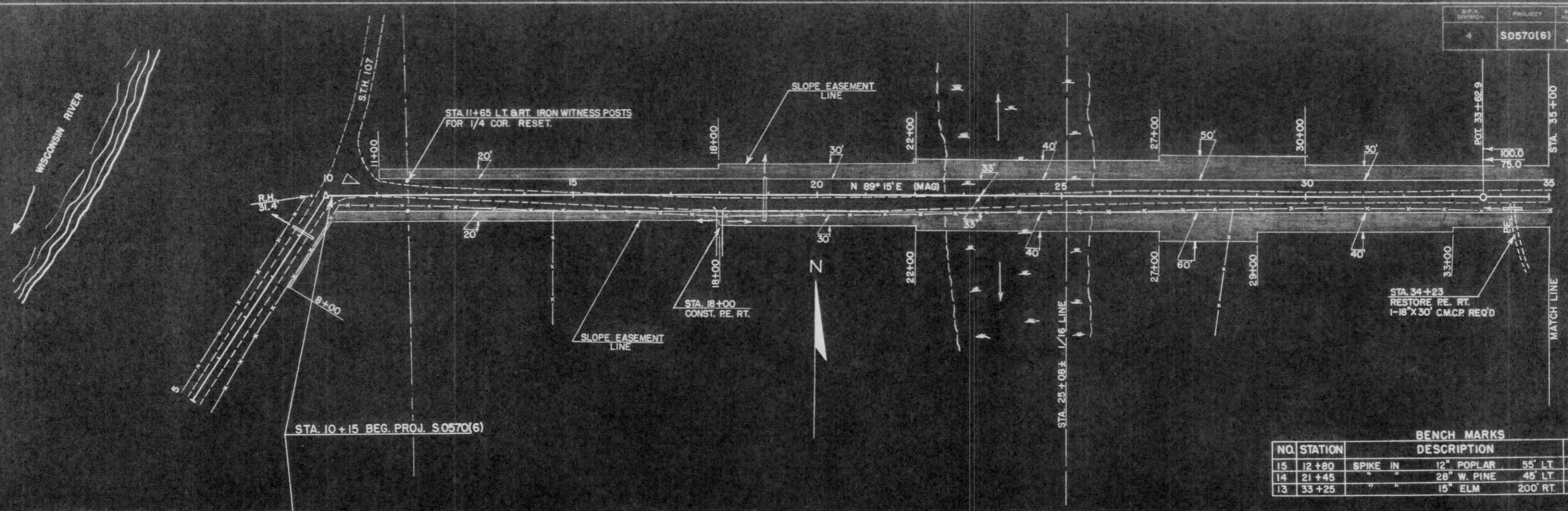
SCALE 1 MILE

TOTAL NET LENGTH OF CENTERLINE = 2.648 MI.

STATE HIGHWAY COMMISSION OF WISCONSIN MADISON, WIS.	
SURVEYOR	J.B. NOTE BOOK I.B.M.
DIVISION COMPUTER	J.B. M. D. CHECKER
DISTRICT CHECKER	H.G. CORRECT
CORRECT:	
DATE	4/11/60 <i>Max Jutte</i> DISTRICT ENGINEER
RECOMMENDED FOR APPROVAL:	
DATE	4/17/60 <i>J. J. Pille</i> ENGINEER
APPROVED:	
DATE	4/22/60 <i>E. C. Ruckman</i> STATE HIGHWAY ENGINEER
DEPARTMENT OF COMMERCE BUREAU OF PUBLIC ROADS	
APPROVED: _____ DATE _____	
DIVISION ENGINEER	

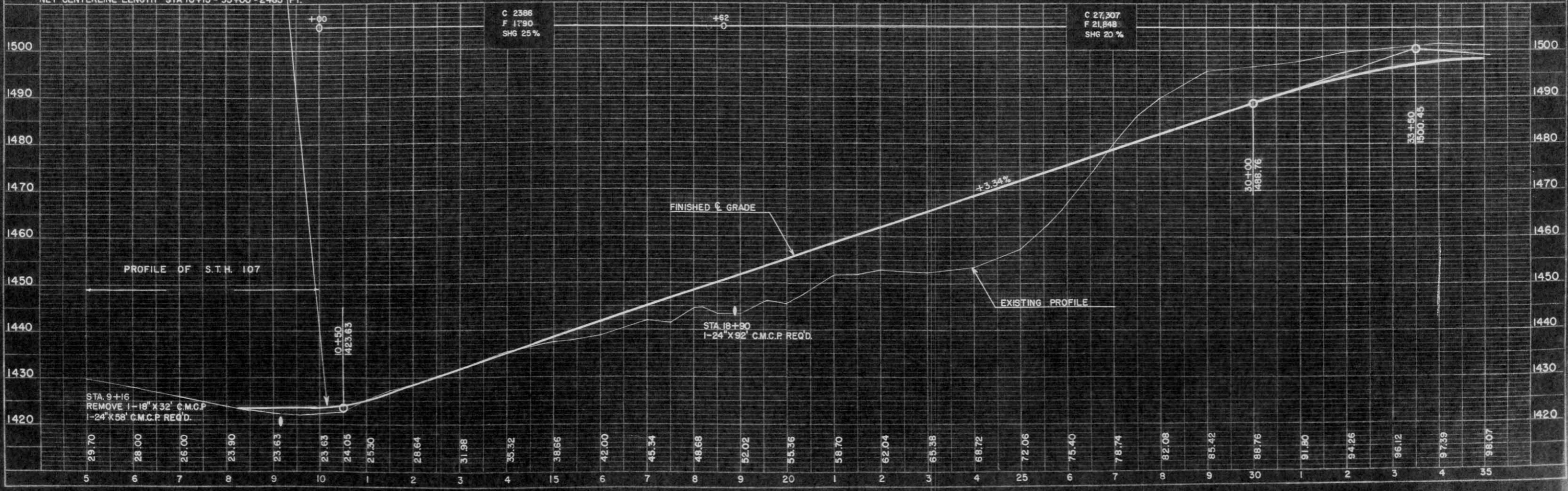
S 0570(6)

DATE: 8-30-80
 BY: J. BERGACKER
 SURVEYED: J. BERGACKER
 ALIGNED: P. J. H.
 CHECKED: P. J. H.
 PLAN: SURVEYED: J. BERGACKER
 NOTE BOOK: ALIGNED: P. J. H.
 NO. 2-4-80: RT. OF WAY CHECKED: P. J. H.



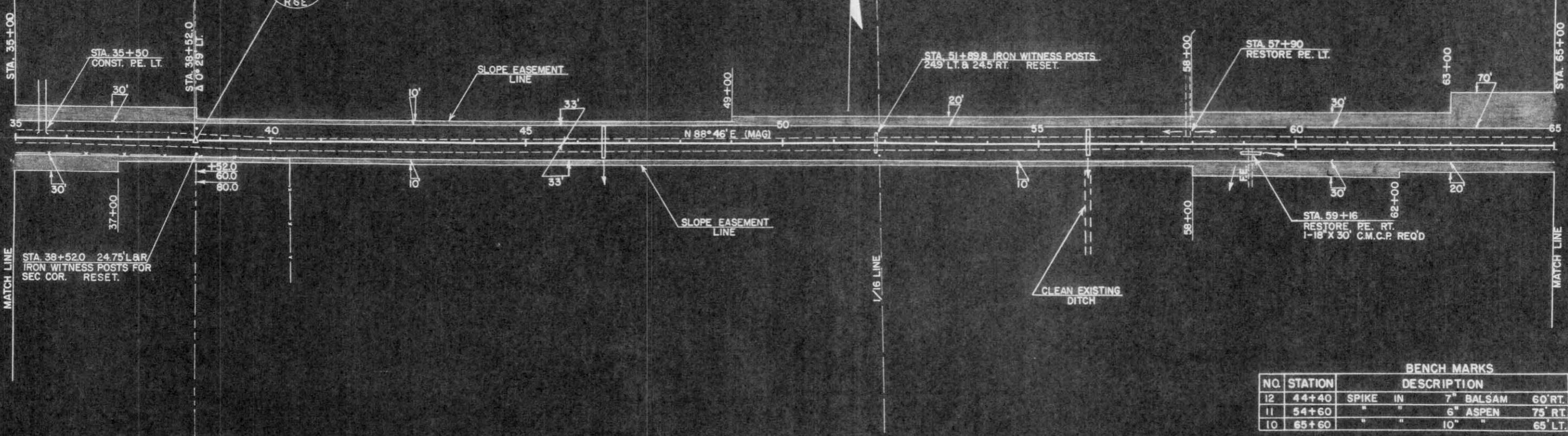
NO.	STATION	DESCRIPTION	ELEV.
15	12+80	SPIKE IN 12" POPLAR 55' LT.	1430.29
14	21+45	" " 28" W. PINE 45' LT.	1452.95
13	33+25	" " 15" ELM 200' RT.	1493.95

NET CENTERLINE LENGTH STA 10+15 - 35+00 = 2485 FT.



DATE: 8-30-80
 BY: J. BERGACKER
 SURVEYED: J. BERGACKER
 CHECKED: P. J. H.
 PROFILE: SURVEYED: J. BERGACKER
 NOTE BOOK: CHECKED: P. J. H.
 NO. 1-1-80: SURVEYED: J. BERGACKER

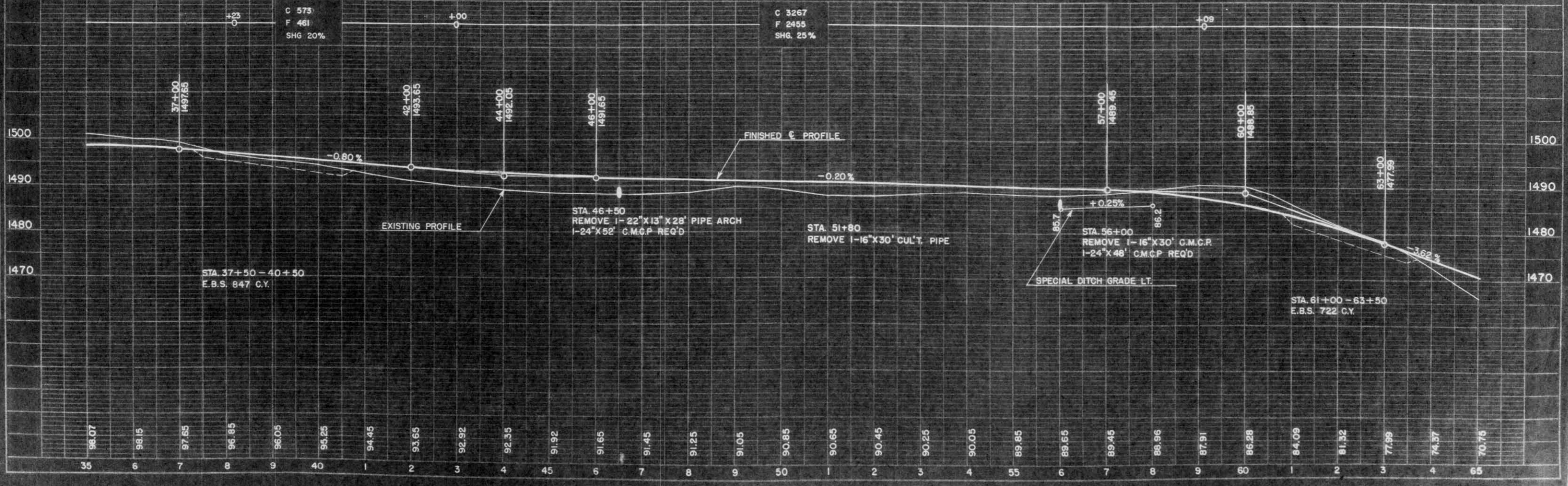
F.P.R. DIVISION	PROJECT	SHEET NUMBER	TOTAL SHEETS
4	S0570(6)	4	21



BENCH MARKS

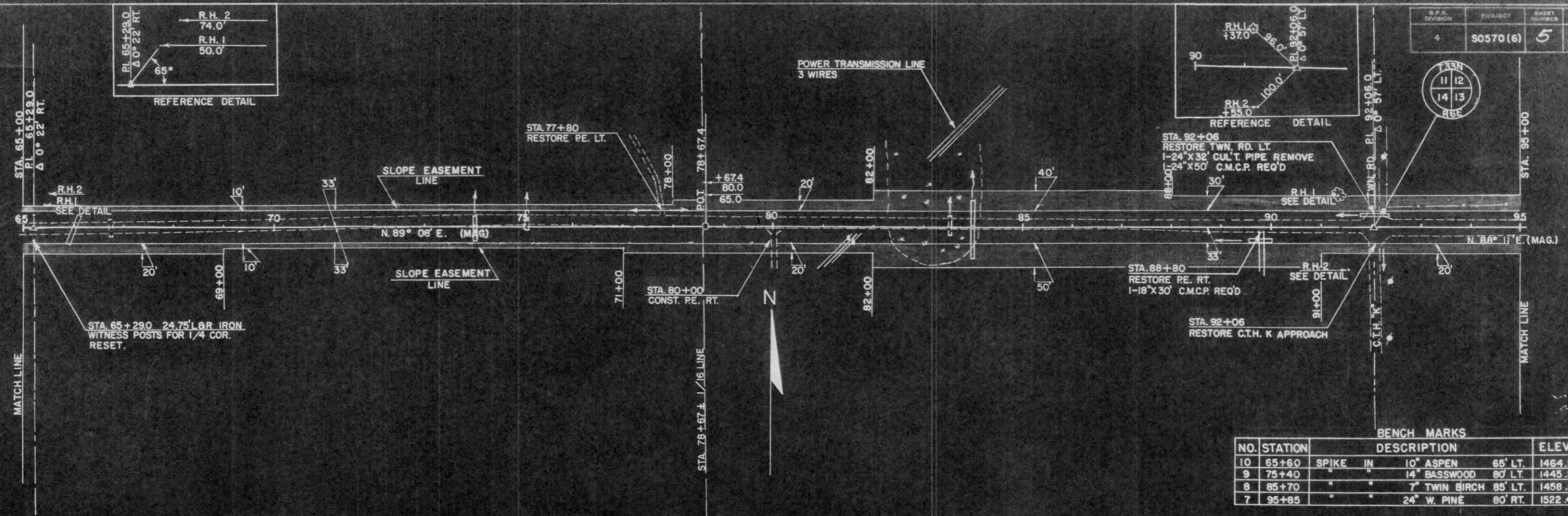
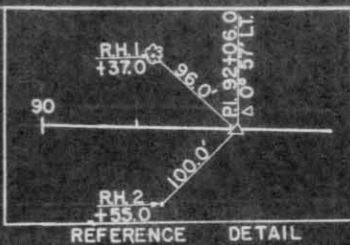
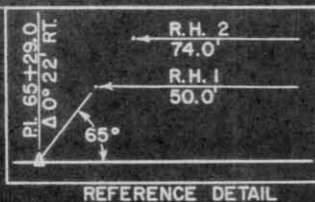
NO.	STATION	DESCRIPTION	ELEV.
12	44+40	SPIKE IN 7" BALSAM 60' RT.	1488.23
11	54+60	" " 6" ASPEN 75' RT.	1487.41
10	65+60	" " 10" " 65' LT.	1464.50

NET CENTERLINE LENGTH STA. 35+00 - 65+00 = 3000 FT.



DATE: 5-58
SCALE: 1"=60'
DRAWN BY: J. BERGACKER
CHECKED BY: P. J. H.
PROJECT: S0570(6)

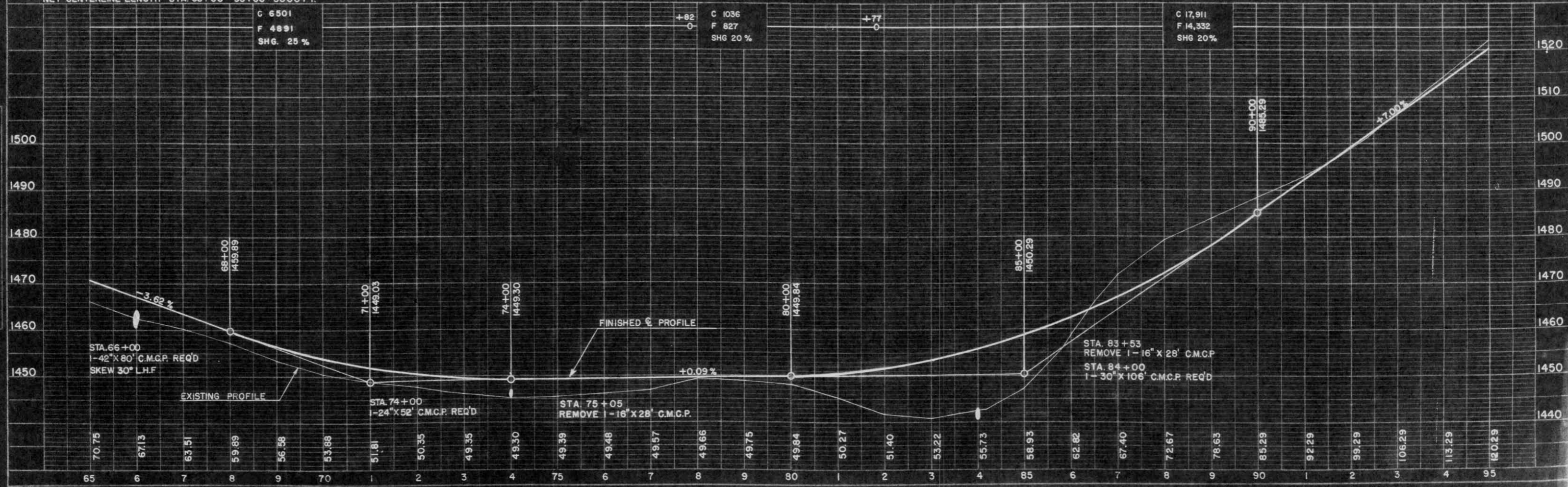
DATE: 5-58
SCALE: 1"=60'
DRAWN BY: J. BERGACKER
CHECKED BY: P. J. H.
PROJECT: S0570(6)



BENCH MARKS

NO.	STATION	DESCRIPTION	ELEV.
10	65+60	SPIKE IN 10" ASPEN 65' LT.	1464.90
9	75+40	" " 14" BASSWOOD 80' LT.	1445.21
8	85+70	" " 7" TWIN BIRCH 85' LT.	1458.60
7	95+85	" " 24" W. PINE 80' RT.	1522.43

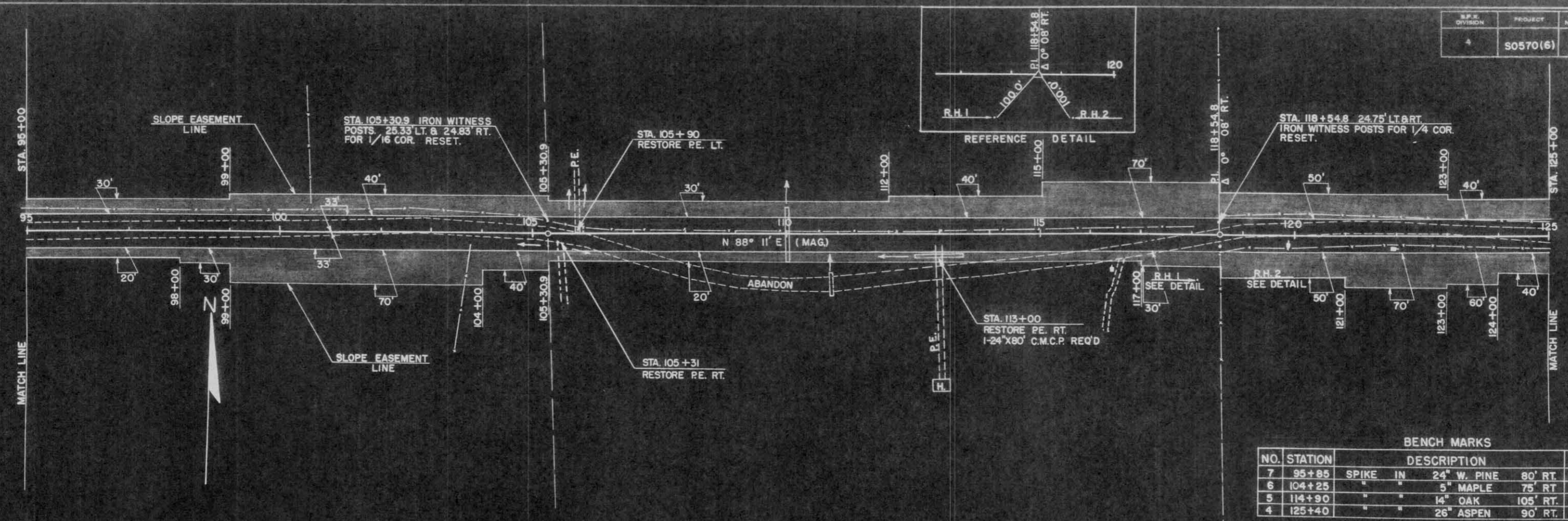
NET CENTERLINE LENGTH STA. 65+00 - 95+00 = 3000 FT.



DATE: 5-59
 1-60
 1-60
 BY: BERGACKER
 L. PETERS
 P. J. H.
 CHECKED: ALBERT GONZALEZ
 J. C. H.
 NO. 1581
 STRUCTURAL DIVISION

DATE: 5-59
 1-60
 1-60
 BY: BERGACKER
 L. PETERS
 P. J. H.
 CHECKED: ALBERT GONZALEZ
 J. C. H.
 NO. 1581
 STRUCTURAL DIVISION

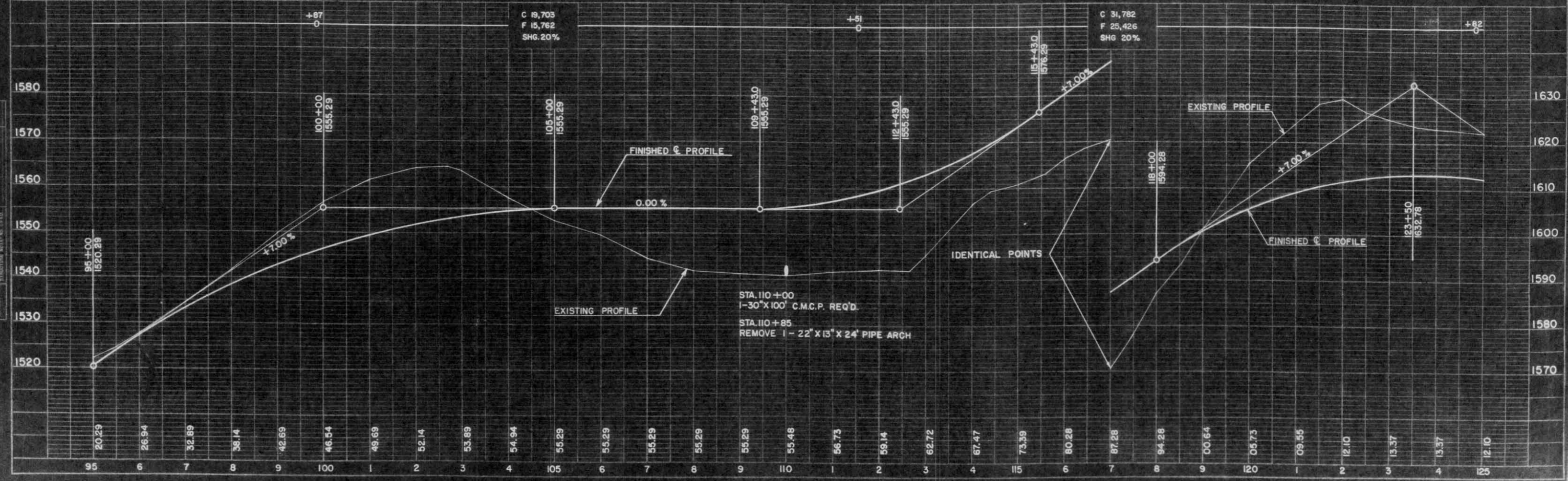
DATE: 1-28-80
 BY: J. BERGACKER
 CHECKED: P. J. H.
 TITLE: PLAN
 NOTE BOOK: ALUMINUM DISK
 BY: W. W. CHAZZES



BENCH MARKS

NO.	STATION	DESCRIPTION	ELEV.
7	95+85	SPIKE IN 24" W. PINE 80' RT.	1522.43
6	104+25	" " 5" MAPLE 75' RT.	1556.35
5	114+90	" " 14" OAK 105' RT.	1566.58
4	125+40	" " 26" ASPEN 90' RT.	1621.07

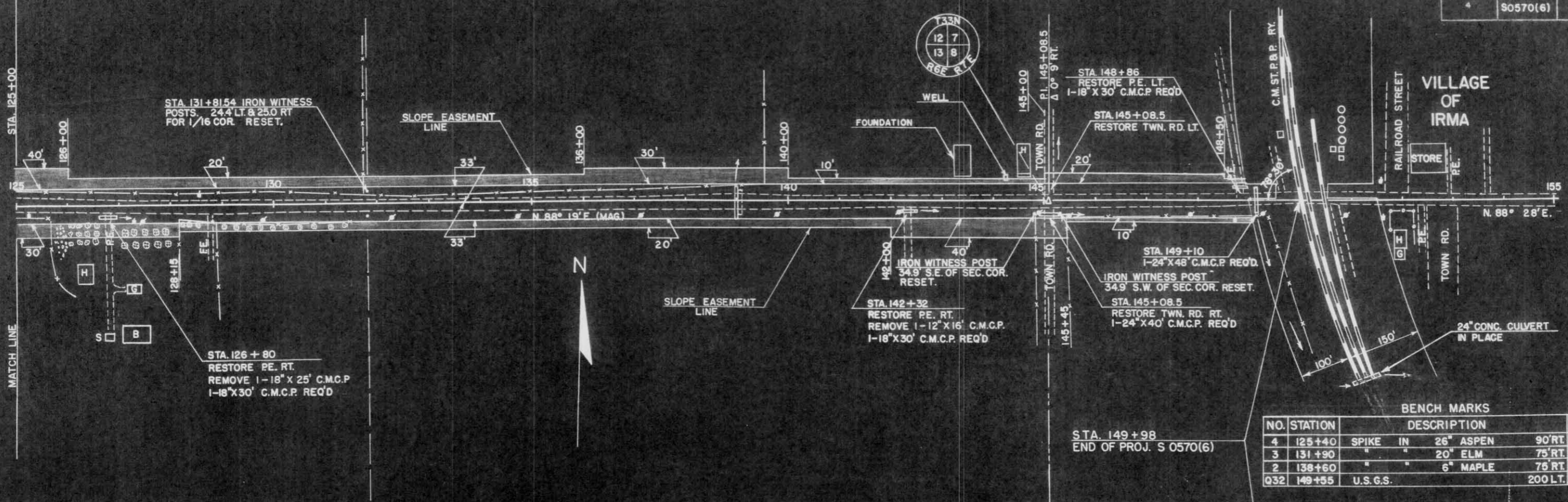
NET CENTERLINE LENGTH STA. 95+00 - 125+00 = 3000 FT.



DATE: 1-28-80
 BY: J. BERGACKER
 CHECKED: P. J. H.
 TITLE: PROFILE
 NOTE BOOK: ALUMINUM DISK
 BY: W. W. CHAZZES

DATE: 5-89
 DRAWN BY: BERBACKER, PETERS
 CHECKED BY: F. J.H.
 PLAN: 5-89
 NOTE: SEE SHEET NO. 6 FOR ALLEGED CONCORDANCE WITH R.F.P. 5-89

DATE: 5-89
 DRAWN BY: BERBACKER, PETERS
 CHECKED BY: F. J.H.
 PROFILE: 5-89
 NOTE: SEE SHEET NO. 6 FOR ALLEGED CONCORDANCE WITH R.F.P. 5-89



BENCH MARKS

NO.	STATION	DESCRIPTION	ELEV.
4	125+40	SPIKE IN 26" ASPEN	90' RT. 1621.07
3	131+90	" " 20" ELM	75' RT. 1572.65
2	138+60	" " 6" MAPLE	75' RT. 1533.90
Q32	149+55	U.S.G.S.	200' LT. 1507.78

NET CENTERLINE LENGTH STA. 125+00 - 149+98 = 2498 FT.

