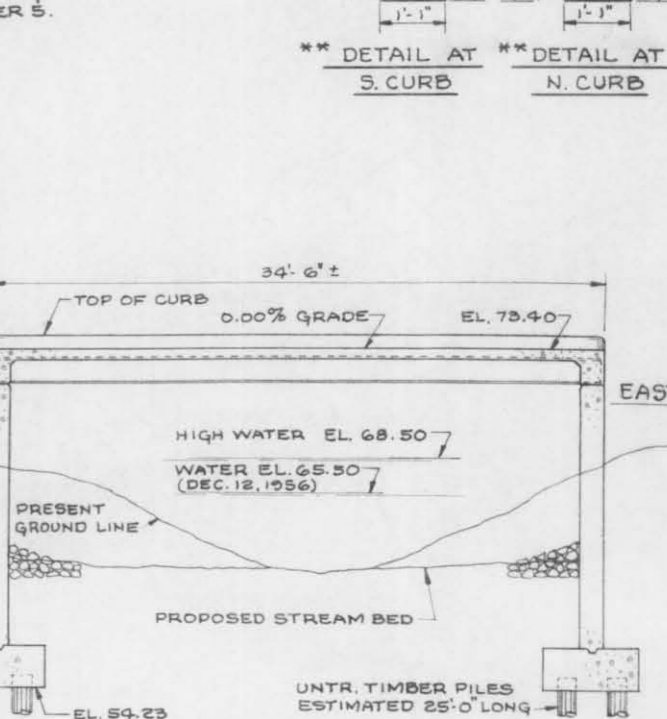
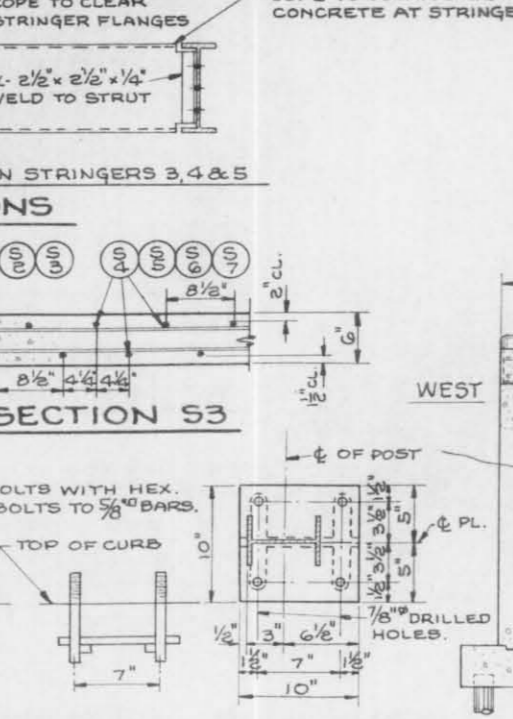
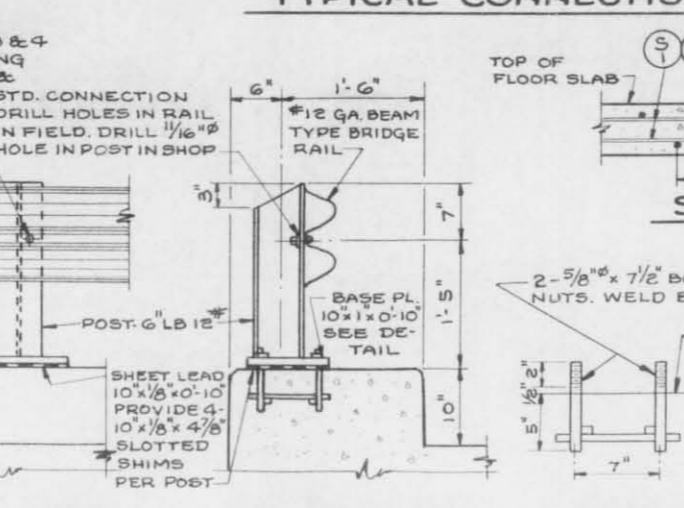
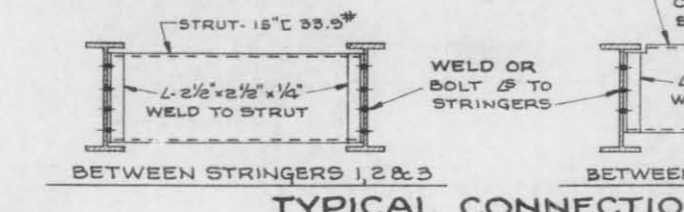
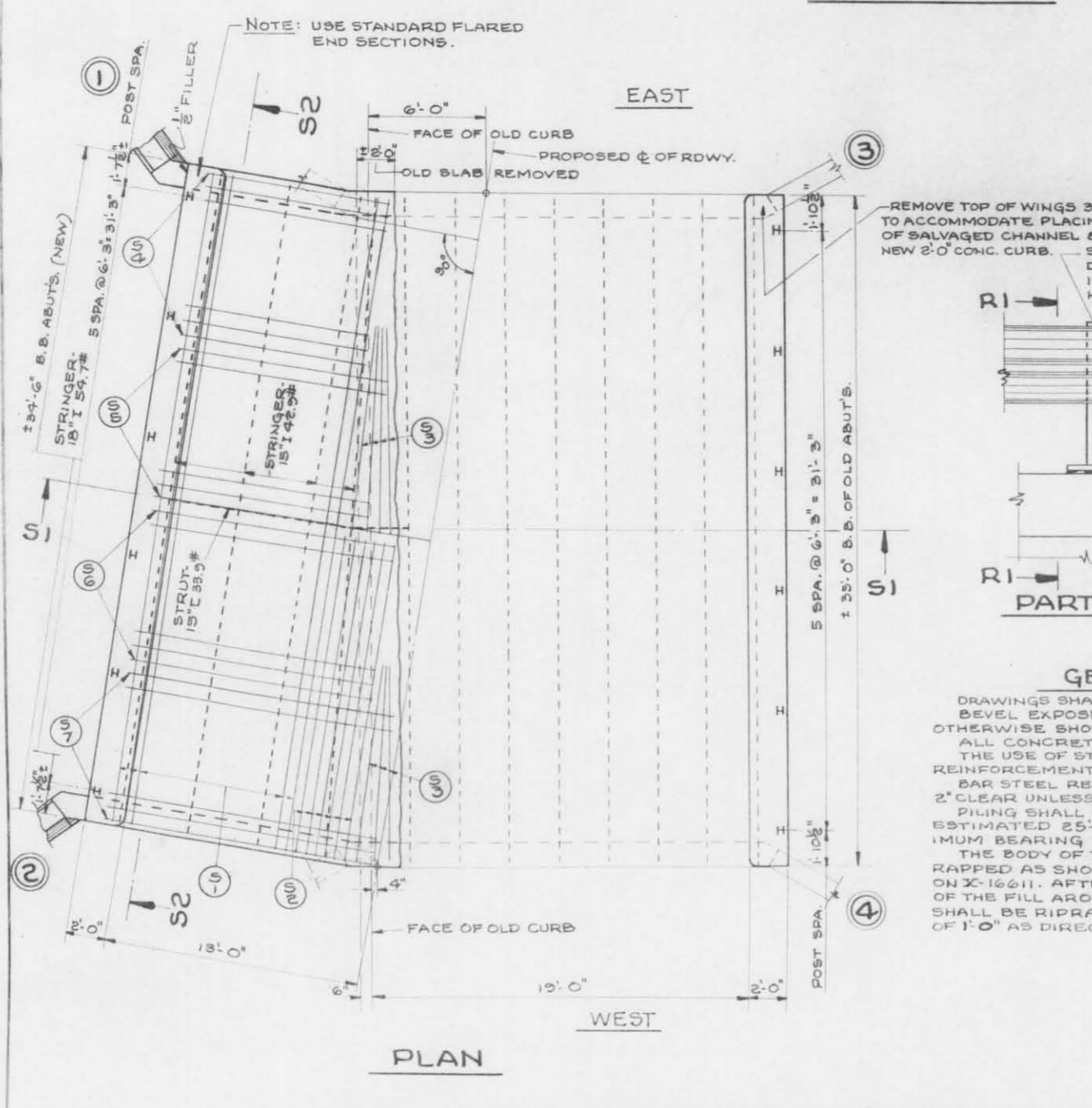


| COUNTY & HIGHWAY | | ROUTE & SECTION | | CLASS & AGREEMENT | | S. P. DIVISION | | PROJECT | | SHEET NO. | | TOTAL SHEETS | |
|------------------|--|-----------------|--|-------------------|--|----------------|--|---------|--|-----------|--|--------------|--|
| 35.6570.0 | | 11.4 | | 4 | | S0570(4) | | 12 | | 30 | | 2490 | |

| MARK NO. | SIZE NO. | LENGTH | SPACING | LOCATION |
|----------|----------|--------|---------|----------------------------------|
| 51 | 19 | 5 | 34-0 | SHOWN SLAB - LONG - TOP & BOTTOM |
| 52 | 6 | 5 | 16-6 | SHOWN " " " " " " |
| 53 | 7 | 5 | 11-0 | SHOWN " " " " " " |
| 54 | 26 | 5 | 9-6 | 8 1/2 " " " " " " |
| 55 | 24 | 5 | 11-0 | 8 1/2 " " " " " " |
| 56 | 24 | 5 | 12-6 | 8 1/2 " " " " " " |
| 57 | 24 | 5 | 14-0 | 8 1/2 " " " " " " |
| 58 | 3 | 5 | 34-0 | SHOWN N. CURB - LONG. |
| 59 | 3 | 5 | 34-6 | SHOWN S. " " " " |
| 510 | 69 | 4 | 4-9 | 1-0 CURBS - TRANS. |



GENERAL NOTES

DRAWINGS SHALL NOT BE SCALED.
 BEVEL EXPOSED EDGES OF CONCRETE 1" UNLESS OTHERWISE SHOWN OR NOTED.
 ALL CONCRETE MASONRY SHALL BE GRADE "AA". THE USE OF STRUCTURAL GRADE BAR STEEL REINFORCEMENT IS PROHIBITED.
 BAR STEEL REINFORCEMENT SHALL BE IMBEDDED 2" CLEAR UNLESS OTHERWISE NOTED.
 PILING SHALL BE UNTREATED TIMBER PILING ESTIMATED 25'-0" LONG AND DRIVEN TO A MINIMUM BEARING VALUE OF 18 TONS PER PILE.
 THE BODY OF THE ABUTMENTS SHALL BE RIPRAPPED AS SHOWN IN "SECTION THRU RIPRAP" ON X-16611. AFTER THE FILL IS IN PLACE THE SLOPE OF THE FILL AROUND THE ENDS OF THE WINGS SHALL BE RIPRAPPED TO A MINIMUM THICKNESS OF 1'-0" AS DIRECTED BY THE ENGINEER.

TOTAL ESTIMATED QUANTITIES

| BID ITEMS: | UNIT | SUPER. | WEST ABUT. | EAST ABUT. | TOTAL |
|-----------------------------------|------|--------|------------|------------|-------|
| EXCAVATION FOR STRUCTURES: | C.Y. | — | 150 | 165 | 315 |
| CONCRETE MASONRY: | C.Y. | 15.2 | 39.0 | 42.1 | 96.3 |
| BAR STEEL REINFORCEMENT: | LB. | 2490 | 1580 | 1460 | 5530 |
| STRUCTURAL CARBON STEEL: | LB. | 7750 | — | — | 7750 |
| SHEET LEAD: | LB. | 36 | — | — | 36 |
| UNTREATED TIMBER TEST PILING: | L.S. | — | — | — | 1 |
| UNTREATED TIMBER PILING - DELIV.: | L.F. | — | 325 | 375 | 700 |
| UNTREATED TIMBER PILING - DRIVEN: | L.F. | — | 325 | 375 | 700 |
| PILE SHOES: | EACH | — | 13 | 15 | 28 |
| STEEL RAILING: | L.F. | 70 | — | — | 70 |
| RIPRAP: | C.Y. | — | 30 | 25 | 55 |

| NON-BID ITEMS: | UNIT | WEST ABUT. | EAST ABUT. | TOTAL | |
|-------------------------------|------|------------|------------|-------|-------------|
| 4" TILE DRAINS: | L.F. | — | 4 | 4 | 8 |
| AMER. EXPAN. BOLTS OR EQUIV.: | EACH | 47 | — | — | 47 |
| EXPAN. JOINT FILLER: | SIZE | 1/2" | 1/4" | 1/4" | 1/2" & 1/4" |
| MEMBRANE WATERPROOFING: | S.F. | — | 27 | 27 | 54 |

***PLACE ONE AT EACH ABUTMENT.

SECTION S2

* THE DESIGN OF THIS STRUCTURE IS IN ACCORDANCE WITH THE REQUIREMENTS OF THE STANDARD SPECIFICATIONS FOR HIGHWAY BRIDGES, A.A.S.H.O., EDITION OF 1953.

LIST OF DRAWINGS

1- SUPERSTRUCTURE: X-16610
 2- ABUTMENTS: X-16611

REVISED STATE HIGHWAY COMMISSION OF WISCONSIN

SUPERSTRUCTURE

CD. LINCOLN RUSSELL & SCHLEY INC. STA. 476+0
 SECTION 31 & 6 TOWN 33 & 32 N. RANGE 8 E.
 DATE 5-3-57 DRAW. 5422 C&D 7724 SPEC. 1957 LOAD H 15

CONTRACT: *N. B. Schult*
 APPROVED: *Ch. Rattigan*

STRUCTURE B-35-6 SHEET 1 OF 2 X 16610