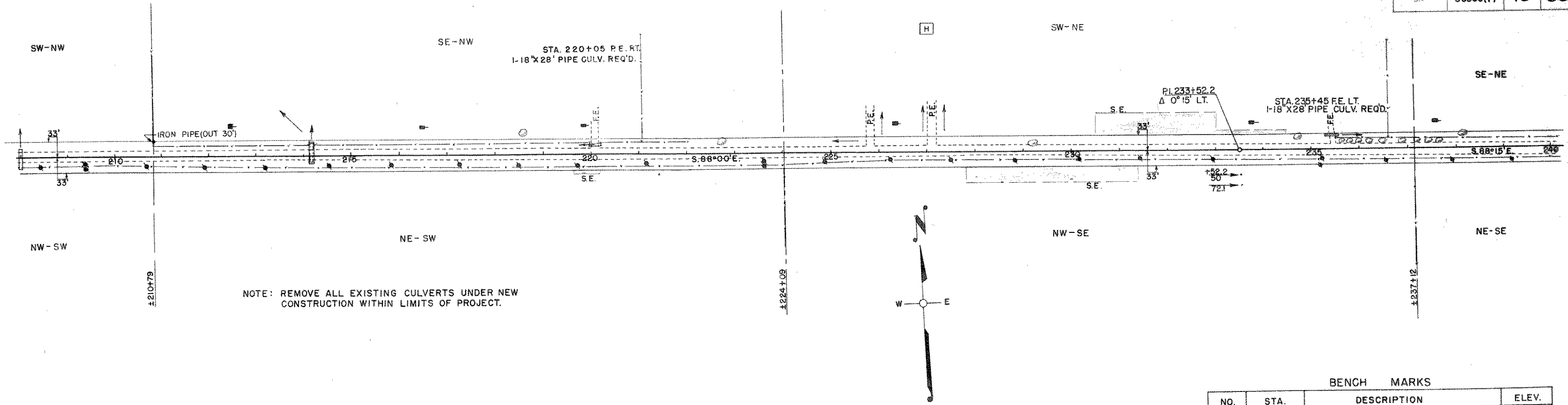


DATE: _____
 SURVEYED: _____
 PLOTTED: _____
 NOTE BOOK ALIGNED CHECKED: _____
 NO. 8339



BENCH MARKS

| NO. | STA. | DESCRIPTION | ELEV. |
|-----|--------|-----------------------------|--------|
| 17 | 205+05 | SPIKE IN POWER POLE 55' LT. | 279.64 |
| 18 | 218+40 | " " 18" HEMLOCK 55' RT. | 292.69 |
| 19 | 231+90 | " " TRIPLE MAPLE 55' RT. | 372.12 |
| 20 | 243+40 | " " 18" ELM 24' LT. | 368.59 |

NET LENGTH OF CENTERLINE STA. 210+00 TO STA. 240+00 = 3,000 LIN. FT.

DATE: _____
 SURVEYED: _____
 PLOTTED: _____
 NOTE BOOK ALIGNED CHECKED: _____
 NO. 8339

