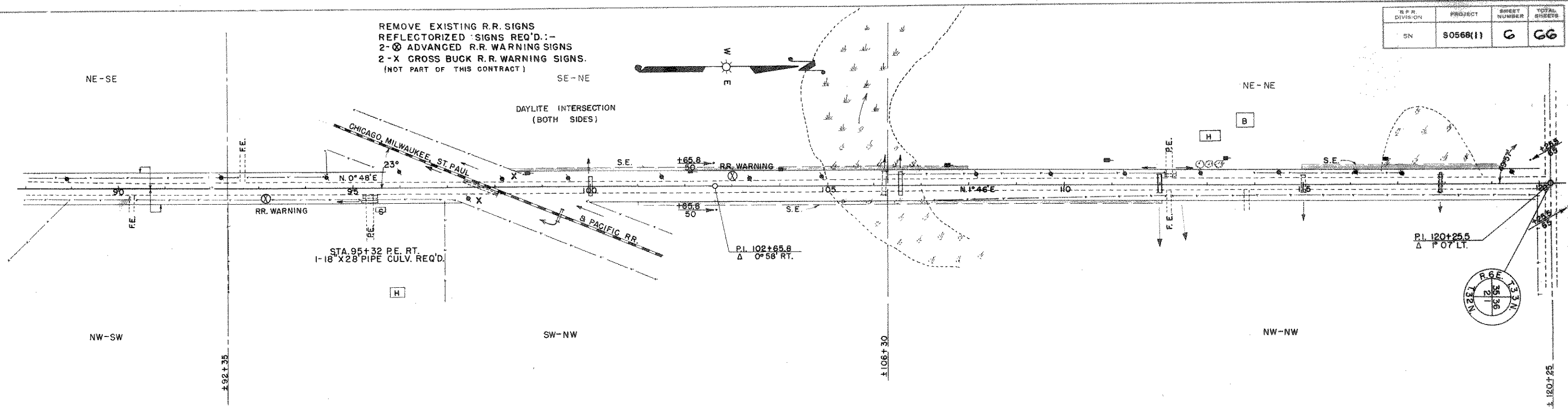
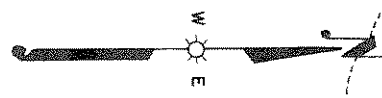


D.P.R. DIVISION	PROJECT	SHEET NUMBER	TOTAL SHEETS
5N	S0568(1)	6	66

REMOVE EXISTING R.R. SIGNS
 REFLECTORIZED SIGNS REQ'D.:-
 2-⊗ ADVANCED R.R. WARNING SIGNS
 2-X CROSS BUCK R.R. WARNING SIGNS.
 (NOT PART OF THIS CONTRACT)

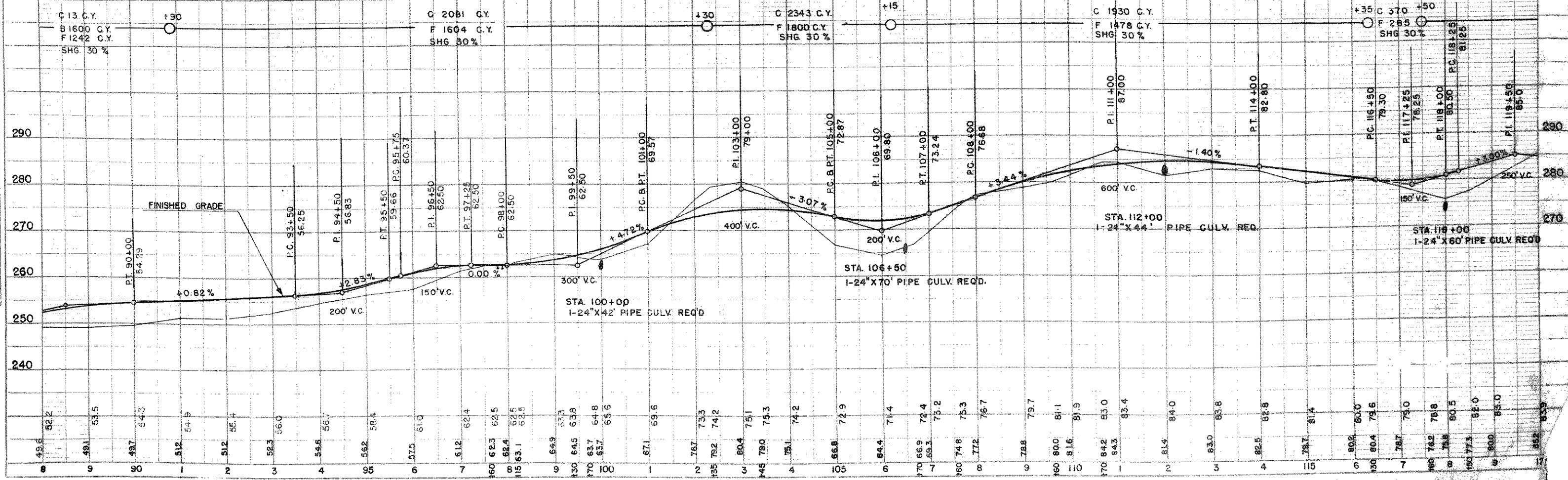


DATE	BY
APR 1958	A.H.S.
DATE	BY
APR 1958	A.H.S.
DATE	BY
APR 1958	A.H.S.

NOTE: REMOVE ALL EXISTING CULVERTS UNDER NEW CONSTRUCTION WITHIN LIMITS OF PROJECT.

BENCH MARKS			
NO.	STA.	DESCRIPTION	ELEV.
8	91+40	SPIKE IN CLUMP MAPLE	70' RT. 252.55
9	105+15	" " 6" POPPLE	55' LT. 262.39
10	118+85	" " 8" W. BIRCH	55' LT. 283.05

NET CENTERLINE LENGTH STA. 90+00 TO STA. 120+00 = 2966.8 LIN. FT.



DATE	BY
APR 1958	A.H.S.
DATE	BY
APR 1958	A.H.S.
DATE	BY
APR 1958	A.H.S.