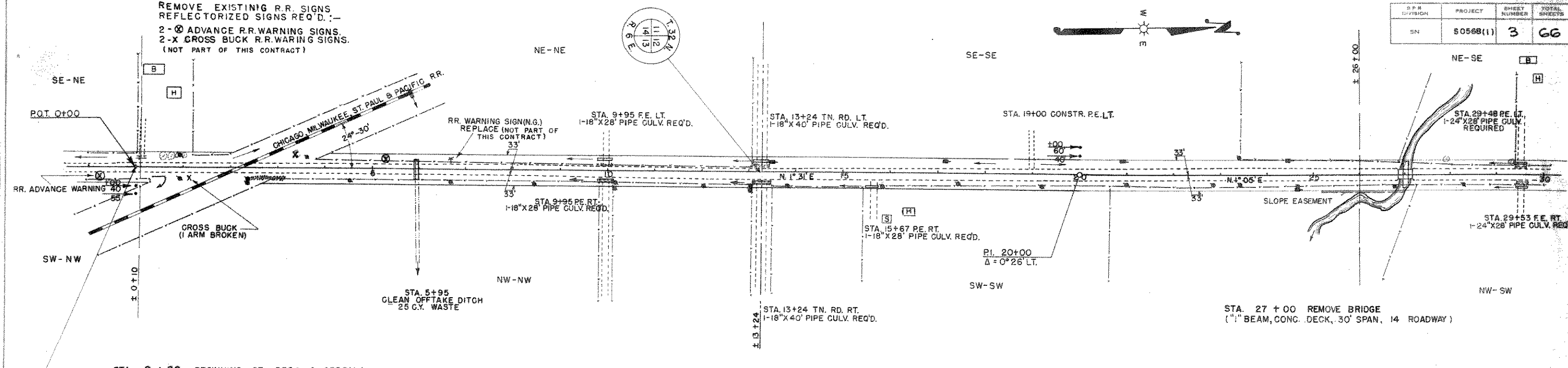


REMOVE EXISTING R.R. SIGNS  
 REFLECTORIZED SIGNS REQ'D. :-  
 2 - ⊗ ADVANCE R.R. WARNING SIGNS.  
 2 - X CROSS BUCK R.R. WARNING SIGNS.  
 (NOT PART OF THIS CONTRACT)

D.P.M. DIVISION	PROJECT	SHEET NUMBER	TOTAL SHEETS
SN	50568(1)	3	66

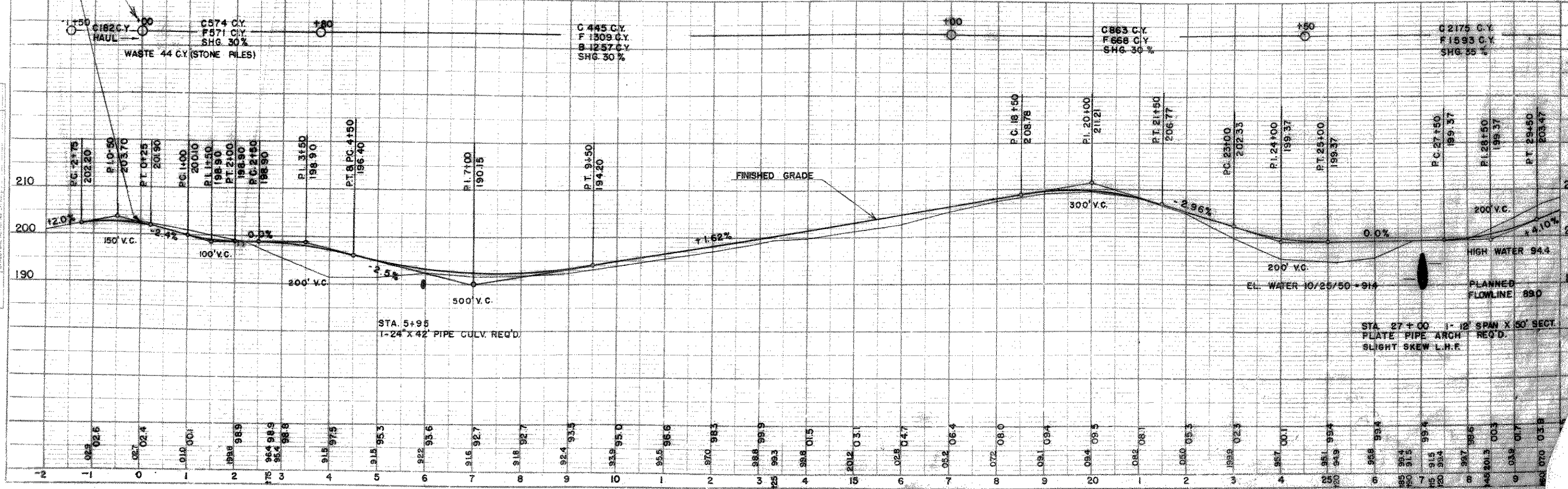


NOTE: REMOVE ALL EXISTING CULVERTS UNDER NEW CONSTRUCTION  
 WITHIN LIMITS OF PROJECT.

BENCH MARKS

NO.	STA.	DESCRIPTION	ELEV.
1	0+75	SPIKE IN TELEPHONE POLE	100' RT. 200.00
2	17+25	" " TWIN BASSWOOD	140' RT. 207.87
3	27+10	" " 18" ELM	85' RT. 198.97

NET CENTERLINE LENGTH STA. 0+00 TO STA. 30+00 = 2968.6 LIN. FT.



PLAN  
 SHEET NO. 0339

PROFILE  
 SHEET NO. 0340