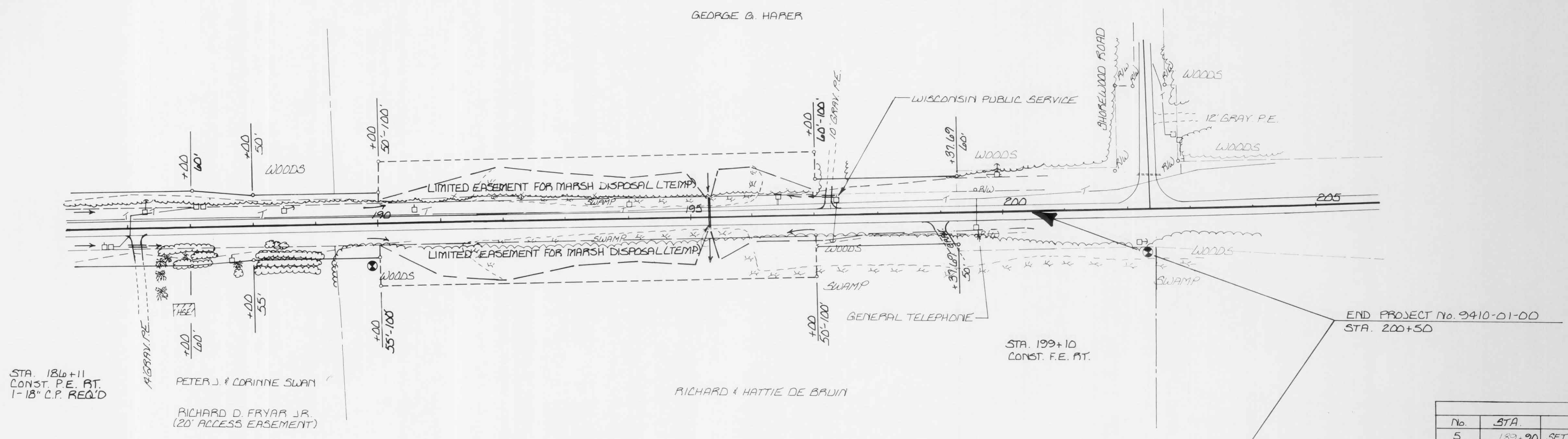


STA. 197+16  
RESTORE P.E. LT.  
1-18" C.P. REMOVE  
1-18" C.P. REQ'D



STA. 186+11  
CONST. P.E. RT.  
1-18" C.P. REQ'D

PETER J. & CORINNE SWAN

RICHARD D. FRYAR JR.  
(20' ACCESS EASEMENT)

RICHARD & HATTIE DE BRUIN

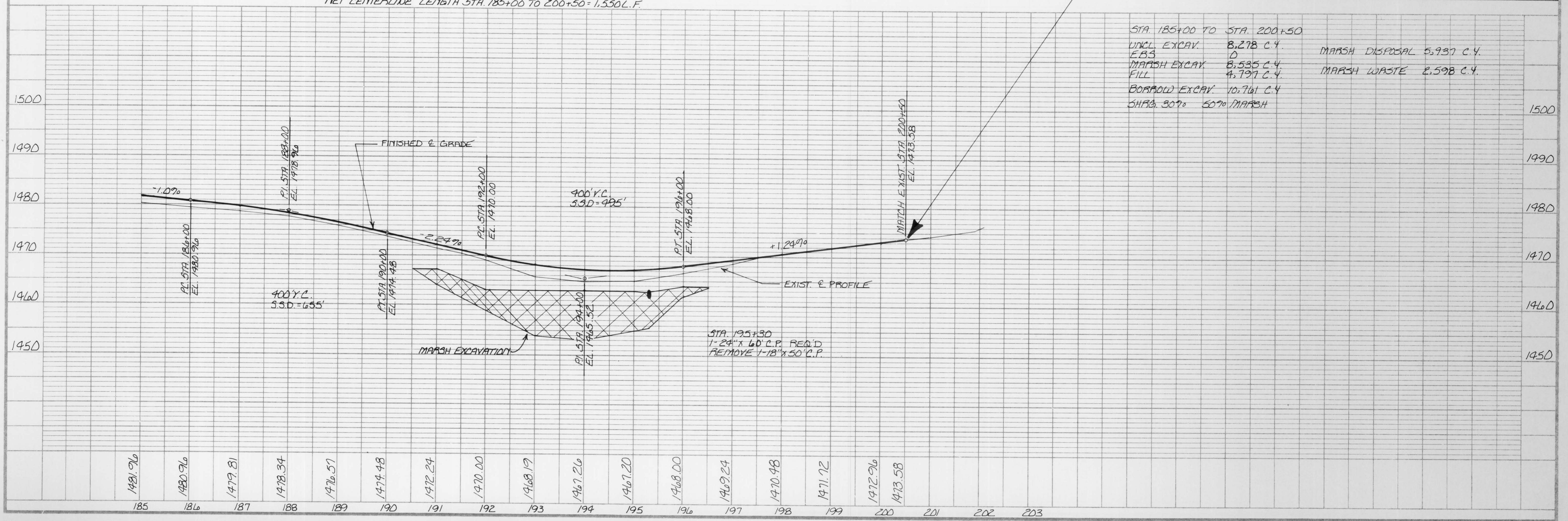
STA. 199+10  
CONST. F.E. RT.

END PROJECT No. 9410-01-00  
STA. 200+50

NET CENTERLINE LENGTH STA. 185+00 TO 200+50 = 1,550 L.F.

No.	STA.	BENCHMARKS DESCRIPTION	ELEV.
5	189+90	SET 3/8" SPK. 12" MAPLE RT. 68' RT.	1472.14
6	202+33	SET 3/8" SPK. 24" PINE RT. 67' RT.	1466.92

STA. 185+00 TO STA. 200+50		
UNCL. EXCAV.	8,278 C.Y.	MARSH DISPOSAL 5,937 C.Y.
FBS	0	MARSH WASTE 2,598 C.Y.
MARSH EXCAV.	8,535 C.Y.	
FILL	4,797 C.Y.	
BORROW EXCAV.	10,761 C.Y.	
SHRUBS 30% 50% MARSH		



STA. 195+30  
1-24" x 60" C.P. REQ'D  
REMOVE 1-18" x 50" C.P.