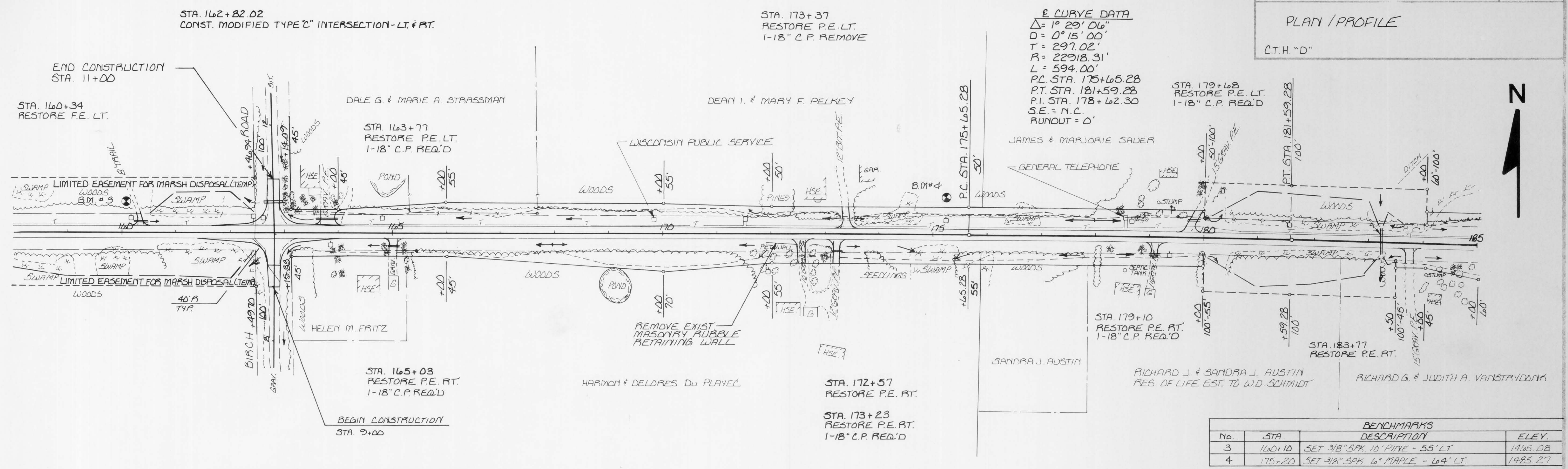


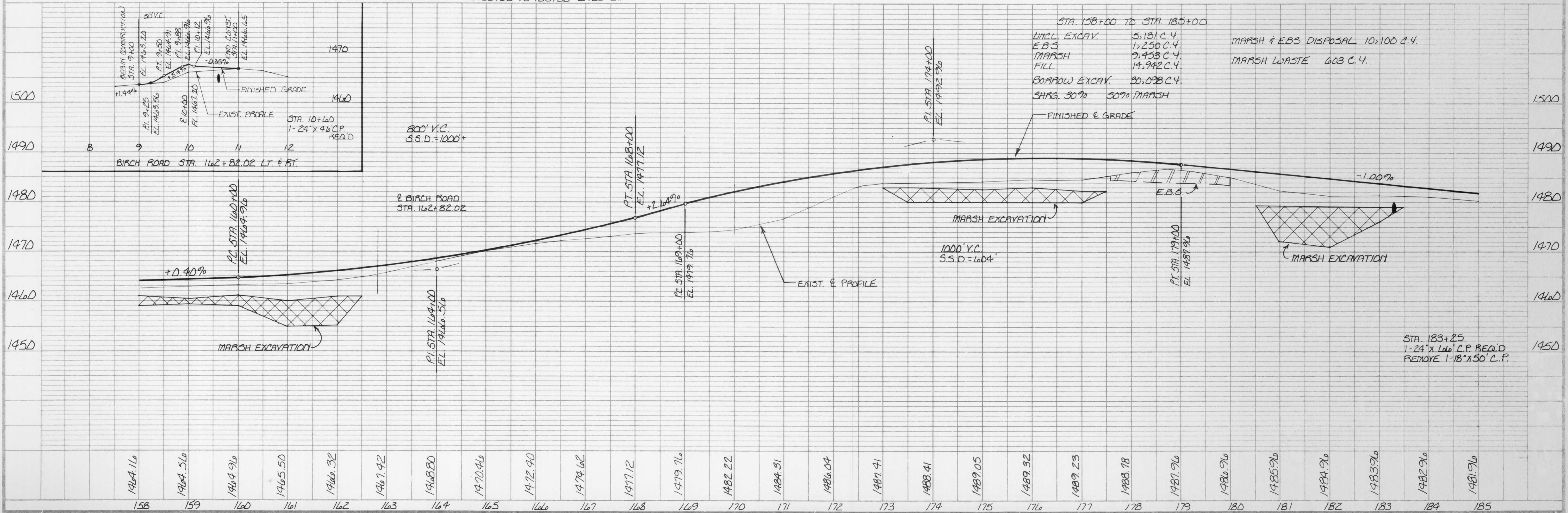
STATE PROJECT NUMBER	SHEET NO.
9410-01-00	
PLAN / PROFILE	
C.T.H. "D"	



E CURVE DATA
 $\Delta = 1^\circ 29' 00''$
 $D = 0^\circ 15' 00''$
 $T = 297.02'$
 $R = 22918.31'$
 $L = 594.00'$
 P.C. STA. 175+65.28
 P.T. STA. 181+59.28
 P.I. STA. 178+62.30
 S.E. = N.C.
 RUNOUT = 0'

No.	STA.	BENCHMARK DESCRIPTION	ELEV.
3	160+10	SET 3/8" SPK 10' PINE - 55' LT	1465.08
4	175+20	SET 3/8" SPK 6" MAPLE - 64' LT	1485.27

NET CENTERLINE LENGTH STA. 158+00 TO 185+00 = 2700 L.F.



STA. 158+00 TO STA. 185+00
 UNCL. EXCAV. 5,131 C.Y.
 EBS 1,250 C.Y.
 MARSH 2,453 C.Y.
 FILL 11,942 C.Y.
 BORROW EXCAV. 20,098 C.Y.
 SHRG. 30% 50% MARSH

MARSH & EBS DISPOSAL 10,100 C.Y.
 MARSH WASTE 603 C.Y.

STA. 183+25
 1-24" x 160' C.P. REQ'D
 REMOVE 1-18" x 50' C.P.