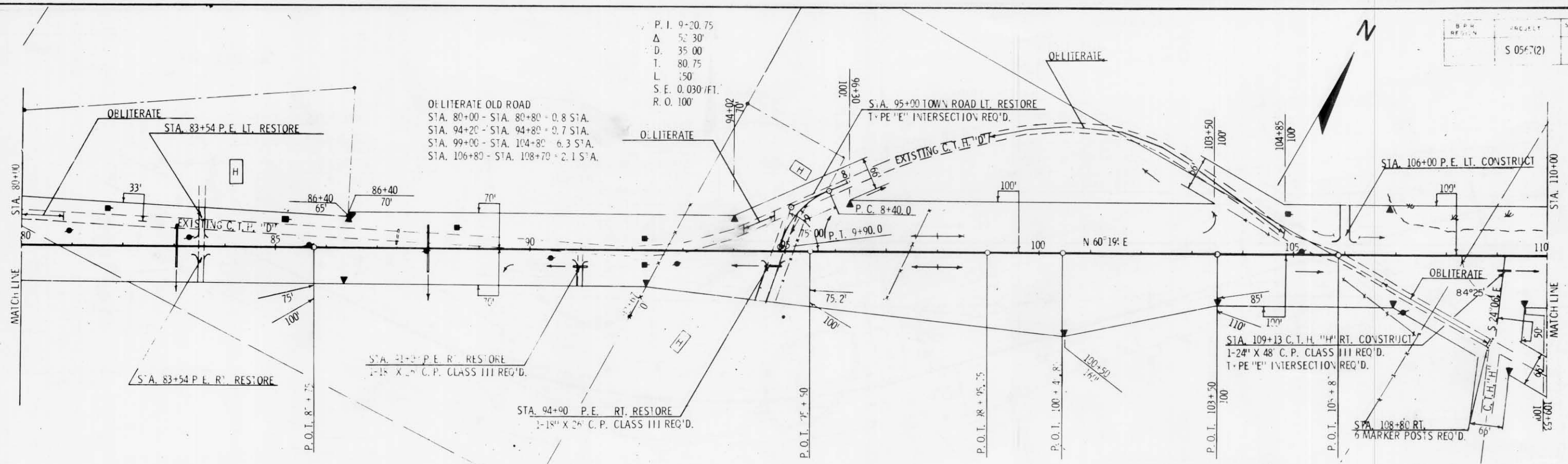


P. I. 9-20.75
 Δ 52.30'
 D. 35.00
 T. 80.75
 L. 150
 S. E. 0.030'/FT.
 R. O. 100'

OBLITERATE OLD ROAD
 STA. 80+00 - STA. 80+80 = 0.8 STA.
 STA. 94+20 - STA. 94+80 = 0.7 STA.
 STA. 99+00 - STA. 104+80 = 6.3 STA.
 STA. 106+80 - STA. 108+70 = 2.1 STA.



BENCH MARKS

NO.	STATION	DESCRIPTION	ELEV.
8	82+00	SPIKE IN CLUMP OF WHITE BIRCH	1496.83
9	105+60	SPIKE IN 8' WHITE BIRCH	1481.92
10	109+00	MARK ON $\frac{1}{2}$ JCT. C.T.H. 'D' & 'H'	1483.80
11	111+85	SPIKE IN 8' POPPLE	1472.35

NET CENTERLINE LENGTH STA. 80+00 - STA. 110+00 = 3000.00 LIN. FT.

UNCL. 88,342 CU. YDS.
 FILL 77,842 CU. YDS.
 SHG 25%
 MARSH 13,067 CU. YDS.
 BORROW 8,975 CU. YDS.

