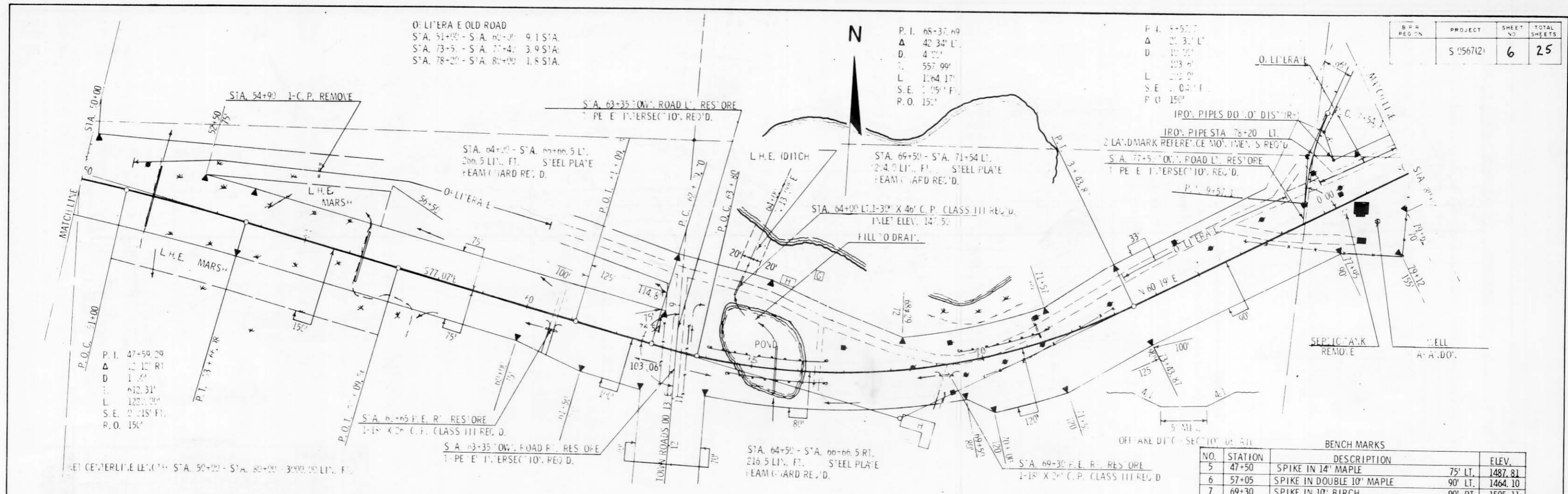


O'LI'ERA E OLD ROAD  
 S.A. 51+00 - S.A. 60+00 9.1 STA.  
 S.A. 73+50 - S.A. 77+40 3.9 STA.  
 S.A. 78+20 - S.A. 80+00 1.8 STA.

P.I. 68+37.69  
 Δ 42.34' L.  
 D. 4.00'  
 L. 557.99'  
 L. 1064.17'  
 S.E. 1.05' F.  
 P.O. 150'

P.I. 8+50.7  
 Δ 21.34' L.  
 D. 10.00'  
 L. 103.00'  
 L. 203.00'  
 S.E. 0.21' F.  
 P.O. 150'

B.P.R. REGION	PROJECT	SHEET NO.	TOTAL SHEETS
	S 056742	6	25



BENCH MARKS

NO.	STATION	DESCRIPTION	ELEV.
5	47+50	SPIKE IN 14' MAPLE	1487.81
6	57+05	SPIKE IN DOUBLE 10' MAPLE	1464.10
7	69+30	SPIKE IN 10' BIRCH	1505.11
8	82+00	SPIKE IN CLUMP OF WHITE BIRCH	1496.83

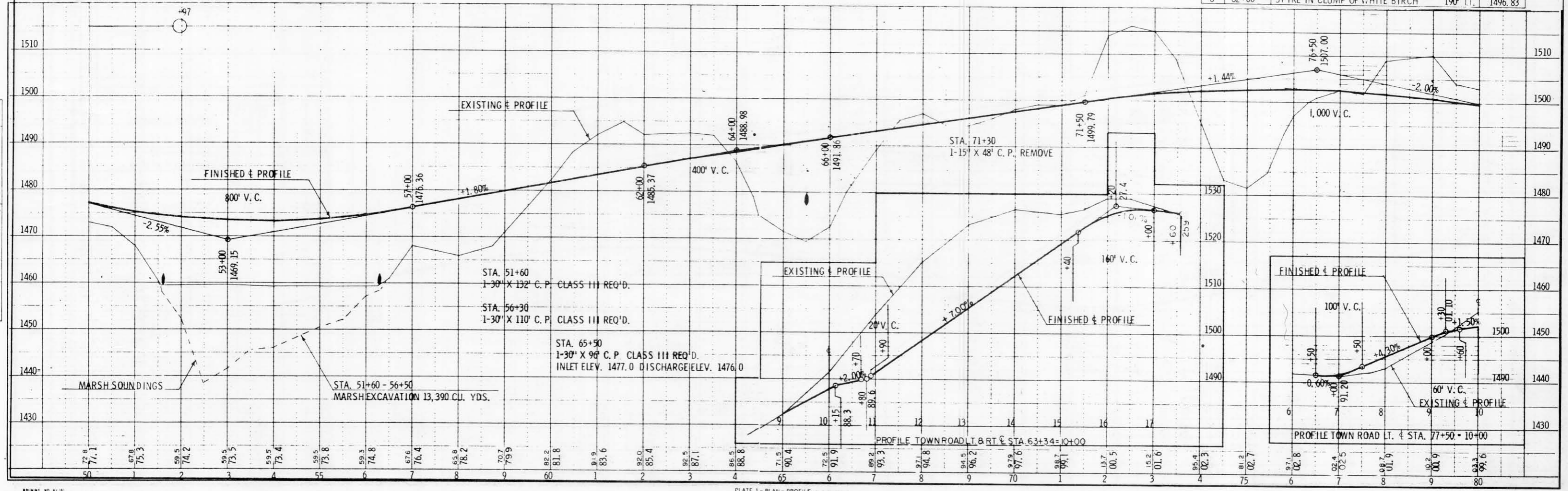


PLATE 1 - PLAN - PROFILE