

P. I. 47+59.29
 Δ 12' 12" RT.
 D. 1' 00"
 T. 612.31'
 L. 1220.00'
 S. E. 0.018° FT.
 R. O. 150'

BENCH MARKS

NO.	STATION	DESCRIPTION	ELEV.
2	18+25	SPIKE IN CLUMP OF BASSWOOD	85' LT. 1500.44
3	28+15	SPIKE IN 8' & 10' DOUBLE MAPLE	90' LT. 1498.28
4	37+50	SPIKE IN 10' WHITE BIRCH	95' LT. 1505.80
5	47+50	SPIKE IN 14' MAPLE	75' LT. 1487.81

NET CENTERLINE LENGTH STA. 20+00 - STA. 50+00 3,000.00 L.V. FT.

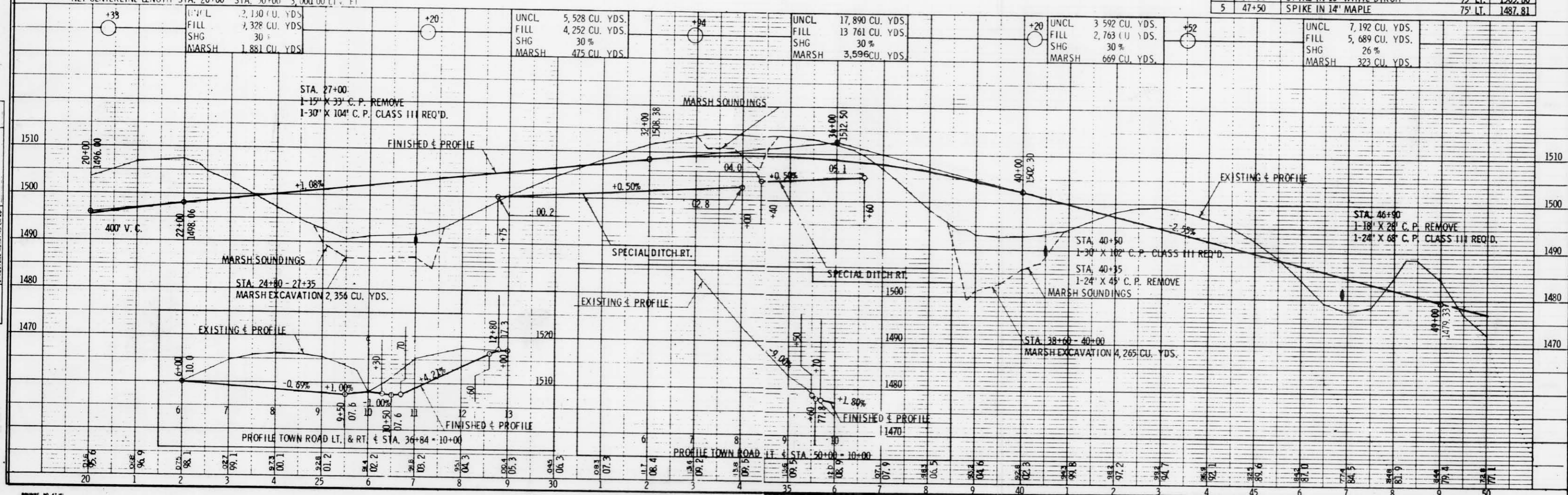


PLATE 1 - PLAN - PROFILE