

REVISION DATE 9/11/90	ROUTE C.T.H. CC	COUNTY LINCOLN	DATE	R/W PROJECT NUMBER 9408-02-00	SHEET NUMBER 4.8
	SCALE, FT. 0 100 200		GRID FACTOR	FEDERAL PROJECT NUMBER	

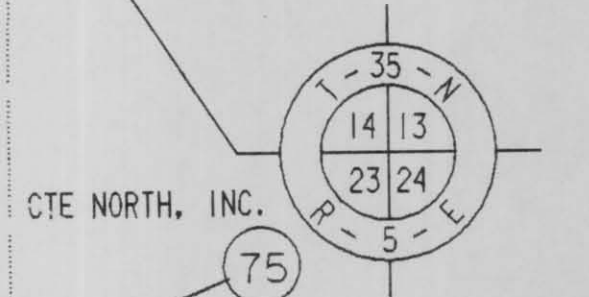
PI 601+20.96
 $\Delta = 14^\circ 47' 05''$
 $D = 12^\circ 30' 00''$
 $T = 59.47'$
 $L = 118.28'$
 $R = 458.37'$
 $LC = 117.95'$
 $N 11^\circ 27' 07'' W$

TIM MICHAEL & CYNTHIA M. FITZGERALD
 SE-SE

WISCONSIN PUBLIC SERVICE
 74

HARRY J. WELKE
 $S 59^\circ 36' 52'' E$
 134.31'

S.E. COR. SEC. 14



BERNTSEN MONUMENT
 STA. 1223+48.16 297.41' LT.

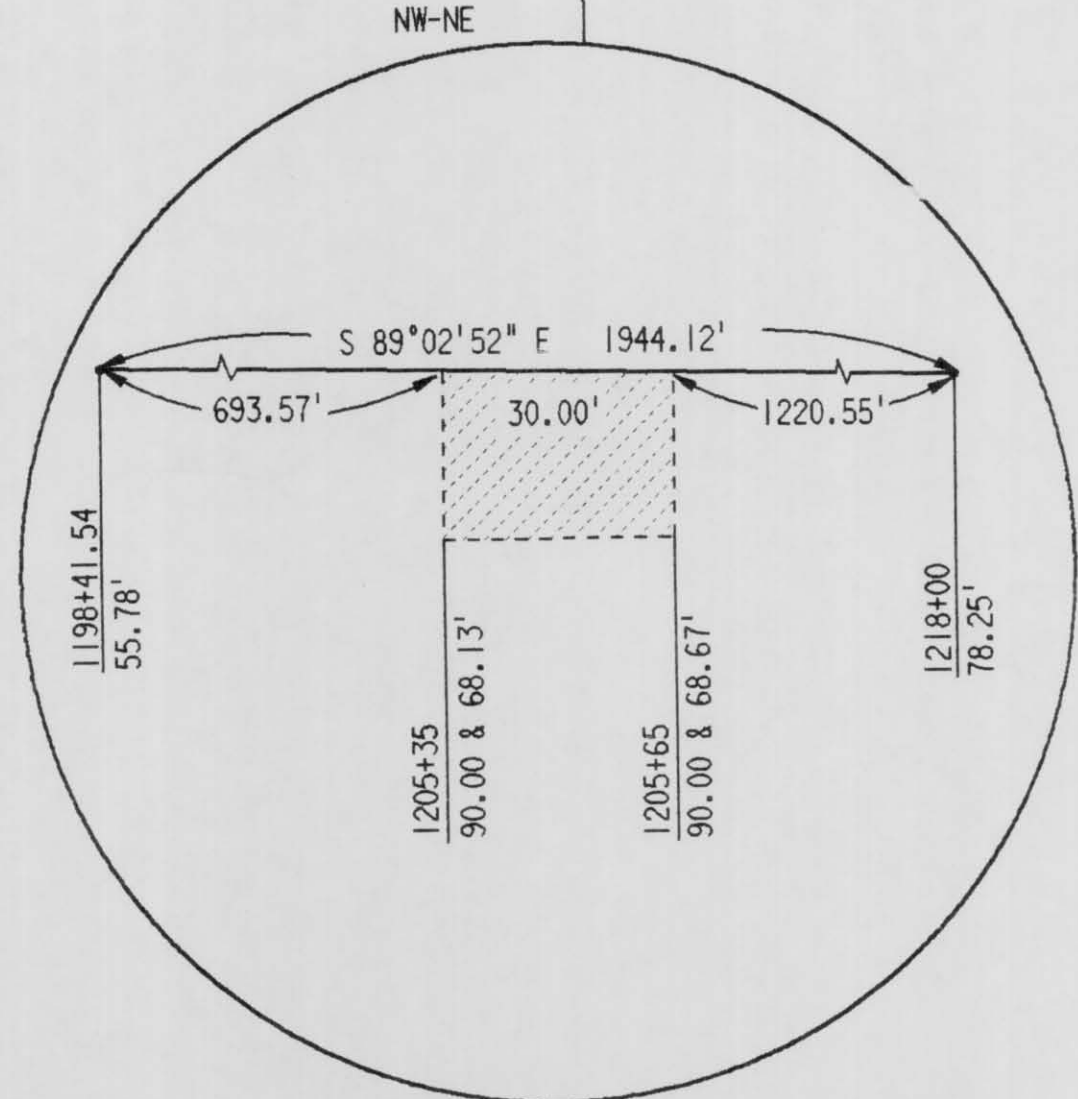
HARRY E. WELKE

JAMES E. HEBERT
 55

N.P. NORTHERN WOODLANDS, INC.
 56

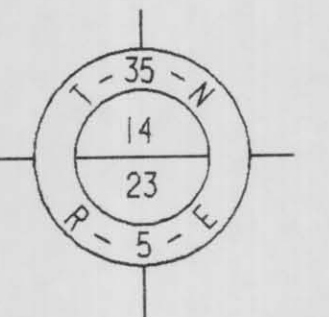
TOWN OF WILSON
 57

PI 1225+10.14
 $\Delta = 90^\circ 49' 38''$
 $D = 6^\circ 45' 00''$
 $T = 861.17'$
 $L = 1345.59'$
 $R = 848.83'$
 $LC = 1209.06'$
 $S 44^\circ 39' 18'' E$



BERNTSEN MONUMENT
 STA. 1198+41.98 22.78' RT. J. DUWAYNE WILKE
 MARY L. WILKE

S 1/4 COR. SEC. 14



T.L.E. FOR DRIVEWAY

STA. 1209+64.49 =
 STA. 600+42.94

TOWN OF WILSON