

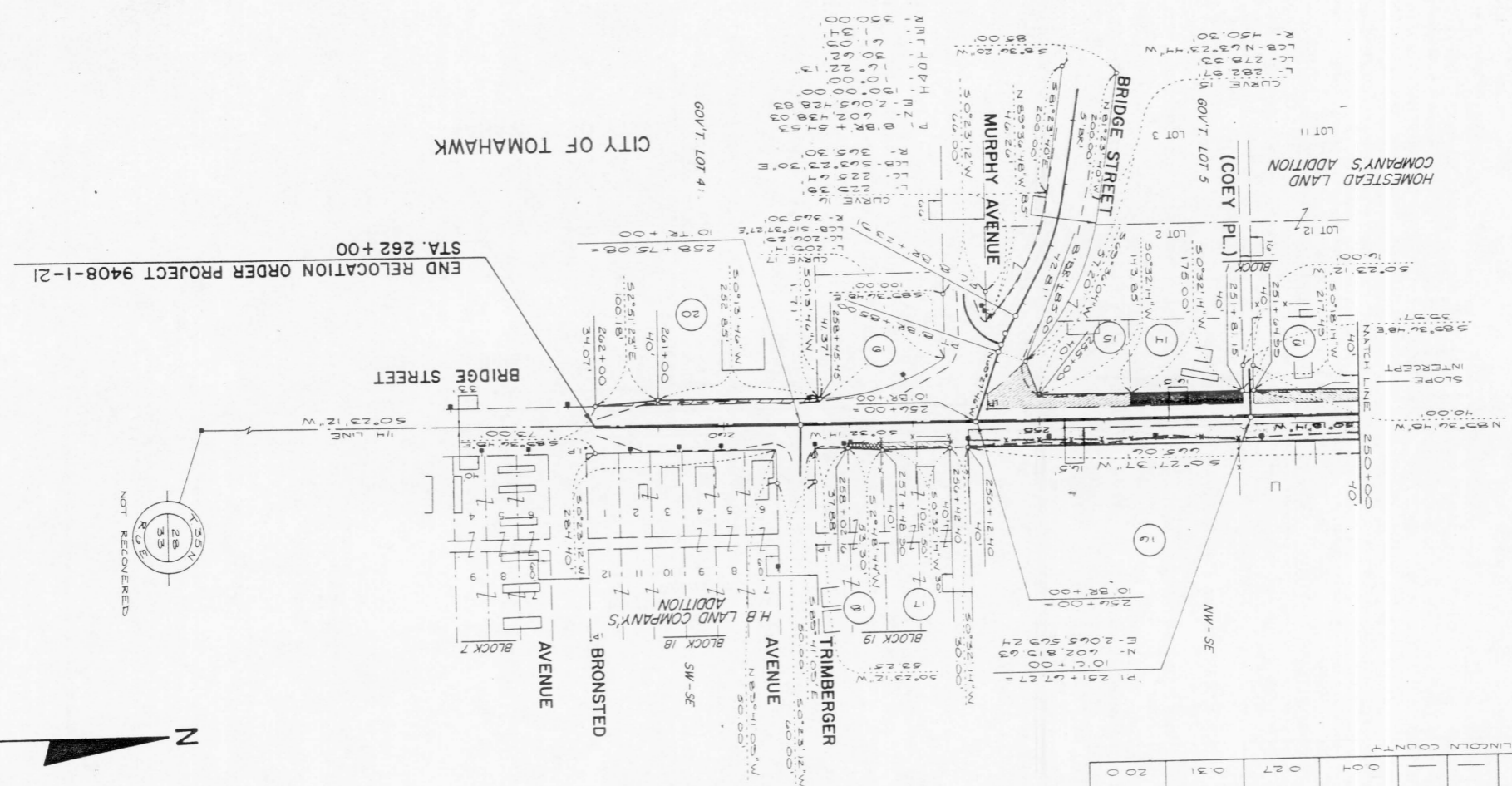
SHEET NUMBER	4.4
	9408-1-21
REVISION	DATE
FEDERAL PROJECT NUMBER	
R/W PROJECT NUMBER	
WEST CORPORATE LIMITS, TOMAHAWK - U.S.H. 51	
C.T.H. "CC"	
LINCOLN COUNTY	
SCALE 0 50 100 200 FT.	
DATE	
CONSTRUCTION PROJECT NUMBER	

BEARING ORIENTATION AND GRID CONVERSION
 RIGHT-OF-WAY PUT BEARINGS ARE ORIENTED TO THE
 MERIDIAN BETWEEN THE NORTHWEST CORNER OF
 SECTION 28 T 55 N R 6 E AND THE NORTHWEST CORNER OF
 SECTION 28 T 55 N R 6 E. THE DIFFERENCE
 BETWEEN ESTABLISHED R/W AND THE DIFFERENCE
 BETWEEN PUT BEARINGS AND REPRESENTS PLANE ANGLES
 IN DEGREES, MINUTES, AND SECONDS. R/W PLATE DISTANCES
 ARE GRID LENGTHS AND MAY BE CONVERTED TO GRID
 LENGTHS BY MULTIPLYING PLT DISTANCES BY 0.99928.

SCHEDULE OF LANDS AND INTERESTS REQUIRED

PARCEL NO.	OWNER	ACRES REQUIRED		LHE ACRES	PERM	TEMP	ACRES REQUIRED		TOTAL R/W REMAINING	ACRES
		INTEREST	REQUIRED				EXISTING	R/W		
13	STEVEN & BARBARA THOREN	SEE SHEET	0.08	0.07			0.07	0.08	0.08	0.08
14	MILDRED M. NEHLS						0.37	0.37	0.37	0.37
15	CHARLES & PERL MORITZ						0.27	0.27	0.27	0.27
16	EDWARD & DOROTHY HOFFMAN						0.74	0.74	0.74	0.74
17	GENE & MARY LOU SELFP						0.20	0.20	0.20	0.20
18	GARY & RUBY FRISKE						0.04	0.04	0.04	0.04
19	BIRDIE HIRSCH CORPORATION						0.46	0.46	0.46	0.46
20	TOMAHAWK AREA						0.27	0.27	0.27	0.27

* ACQUIRED IN THE NAME OF LINCOLN COUNTY



CITY OF TOMAHAWK

GOV'T. LOT 4:

HOMESTEAD LAND COMPANY'S ADDITION

(COEY PL.)

MURPHY AVENUE

BRIDGE STREET

BRONSTED AVENUE

TRIMBERGER AVENUE

BLOCK 18

BLOCK 19

BLOCK 7

BLOCK 19A

BRIDGE STREET

END RELOCATION ORDER PROJECT 9408-1-21
 STA. 262+00

