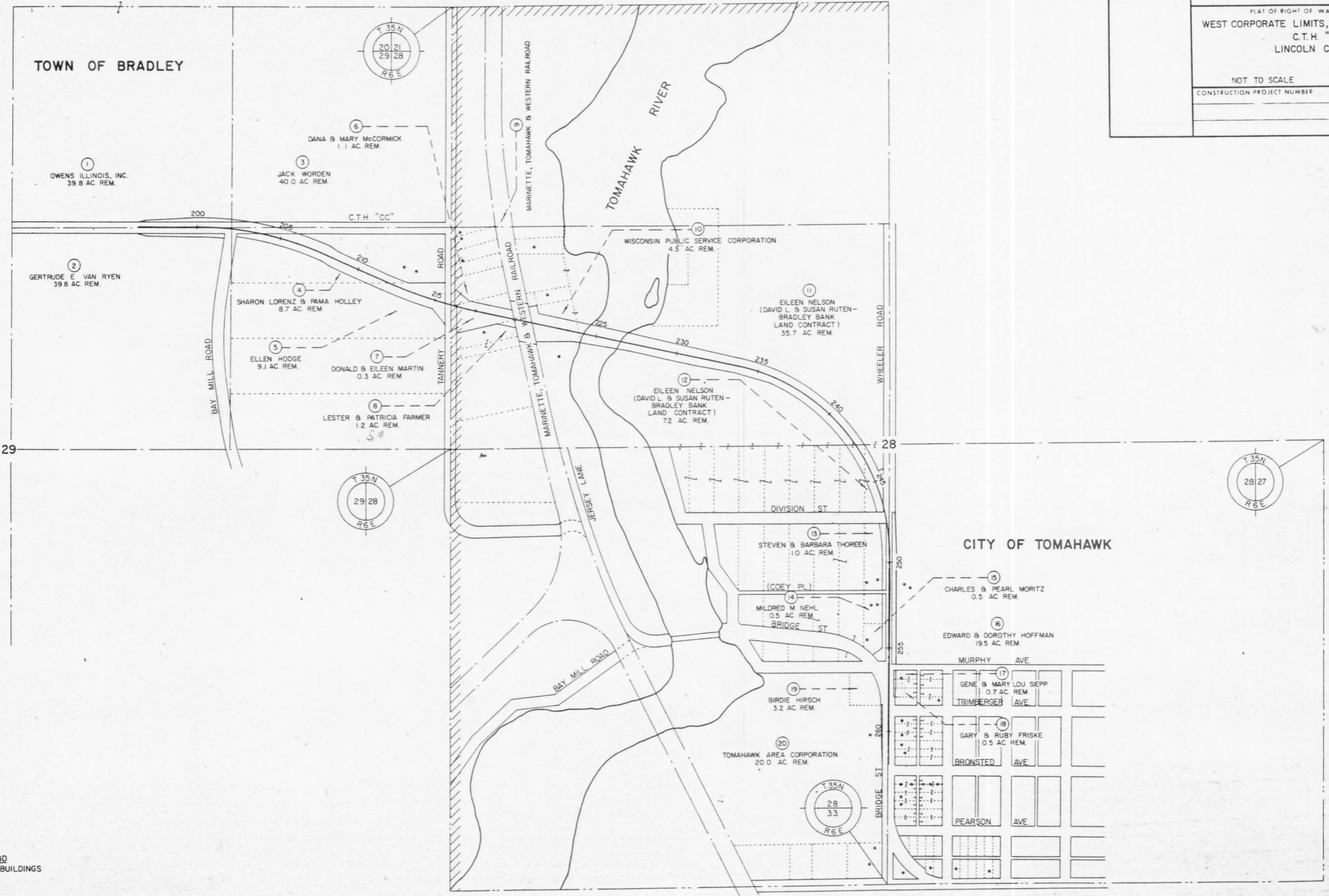


REVISION DATE	R. W. PROJECT NUMBER <b>9408-1-21</b>	SHEET NUMBER <b>4.1</b>
FEDERAL PROJECT NUMBER		
PLAT OF RIGHT OF WAY REQUIRED FOR WEST CORPORATE LIMITS, TOMAHAWK - U.S.H. 51 C.T.H. "CC" LINCOLN COUNTY		
NOT TO SCALE		DATE
CONSTRUCTION PROJECT NUMBER		



LEGEND  
 - - - - BUILDINGS