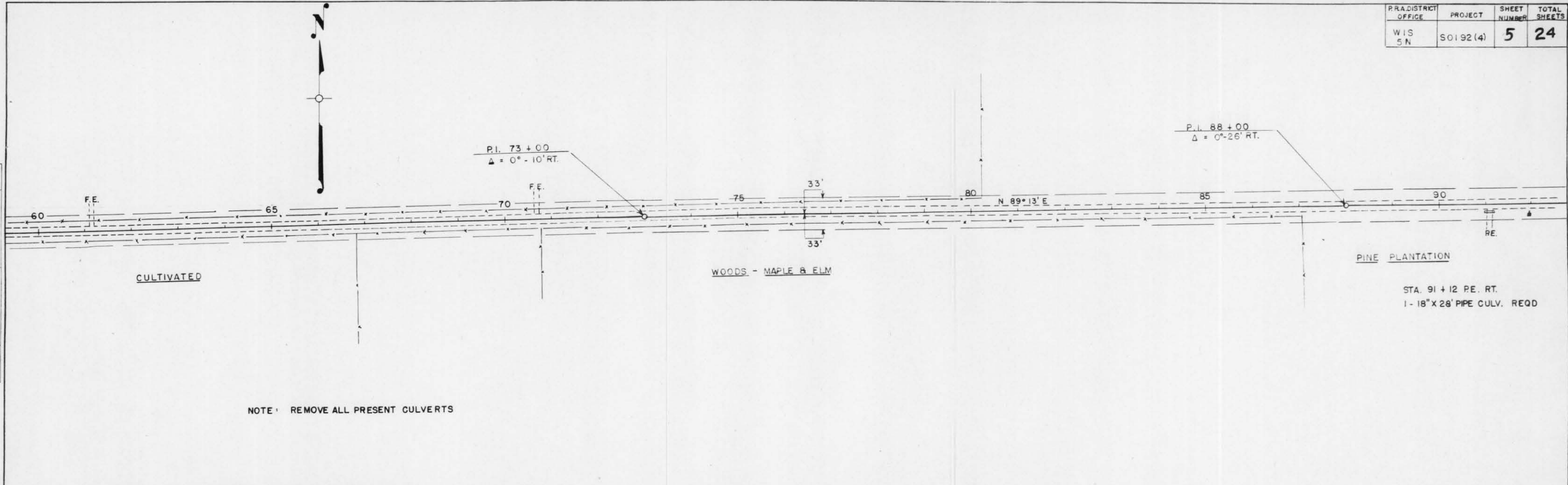


PLAN
 SURVEYED
 NOTE BOOK
 ALIGNMENT CHECKED
 NO. 8293

PROFILE
 SURVEYED
 GRADES CHECKED
 B.M. NOTED
 NO. 8293



NOTE: REMOVE ALL PRESENT CULVERTS

PINE PLANTATION
 STA. 91 + 12 P.E. RT.
 1 - 18" X 28' PIPE CULV. REQD

NET LENGTH OF CENTERLINE STA. 62-92 = 3000 LIN. FT.

