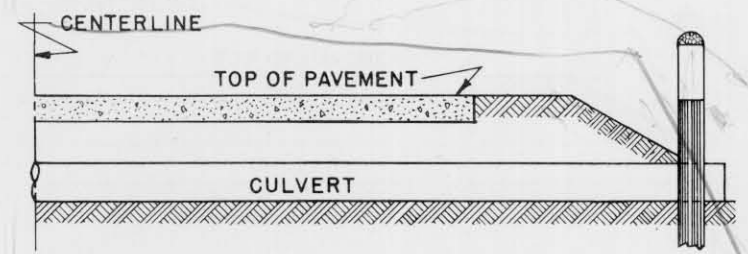
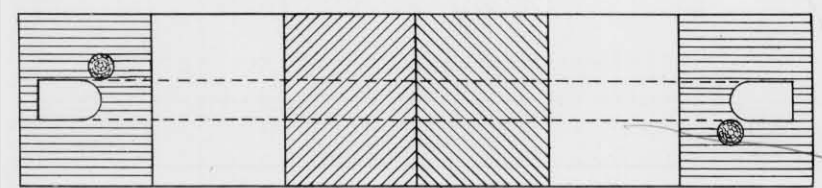


ELEVATION SHOWING SPACING

ELEVATION SHOWING LOCATION ON ROAD SHOULDER



SECTION WITH CULVERT MARKER



PLAN SKETCH

SPACING OF MARKER POSTS FOR VARYING LENGTHS OF SHOULDER TO BE PROTECTED.

100 FT. TO 500 FT. ----- 50 FT.
 500 FT. OR MORE ----- 100 FT.
 SEE MISCELLANEOUS QUANTITY SHEET OF PLANS.

GENERAL NOTES

CONSTRUCTION DETAILS NOT SHOWN HERE SHALL CONFORM TO THE PERTINENT REQUIREMENTS OF THE STANDARD SPECIFICATIONS AND THE APPLICABLE SPECIAL PROVISIONS.

POSTS SHALL BE 6" CONFORMING TO THE REQUIREMENTS OF SECTION 4124

REFLECTOR BUTTONS SHALL BE SIZE NO.1 CRYSTAL, FOR WOOD MOUNTING. DRILL MOUNTING HOLE TO FIT BUTTON (GENERALLY 7/8" DIAMETER.)

WHERE CABLE GUARD FENCE OR MARKER POSTS ARE USED THE CULVERT MARKER POST SHOULD BE OMITTED.

MARKER POST AS CULVERT MARKER TO BE PLACED AT BOTH ENDS OF CULVERT ON NEAR SIDE OF CULVERT. NO REFLECTOR BUTTON REQUIRED.

MARKER POSTS	
FOR	
SHOULDER DELINEATION AND CULVERTS	
STATE HIGHWAY COMMISSION OF WISC.	
RECOMMENDED FOR APPROVAL:	
<i>Frank Crav</i>	DESIGN ENGINEER
<i>W. Bluh</i>	CONSTRUCTION ENGINEER
DATE	
APPROVED:-	OCT. 1, 1945
DRAWN C.A.L.	<i>E. G. Raiten</i>
CHECKED D.F.C.	DATE STATE HIGHWAY ENGINEER