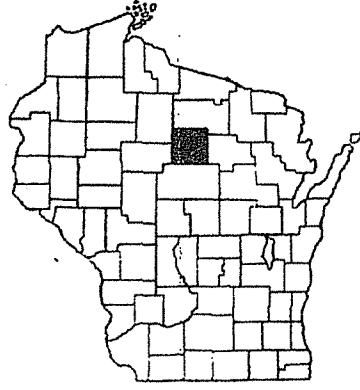


INDEX OF SHEETS

- SHEET NO. 1 TITLE
- SHEET NO. 1 TYPICAL CROSS SECTIONS
- SHEET NO. 2 ESTIMATE OF QUANTITIES
- SHEET NO. 2 MISCELLANEOUS QUANTITIES
- SHEET NO. — RIGHT OF WAY PLAT
- SHEET NO. 3-16 PLAN AND PROFILE STA. 0+00 TO STA. 417+10
- SHEET NO. 17-21 STANDARD DETAILS
- SHEET NO. — DRAINAGE STRUCTURES
- SHEET NO. 22-24 CROSS SECTIONS



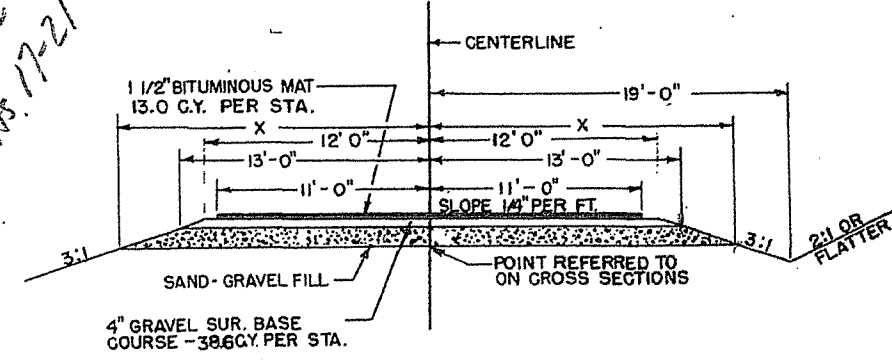
STATE OF WISCONSIN
STATE HIGHWAY COMMISSION OF WISCONSIN

PLAN AND PROFILE OF PROPOSED
S.T. HIGHWAY 17 — EAST COUNTY LINE ROAD
C.T. HIGHWAY "C"
LINCOLN COUNTY
PROJECT S 0192(4)

COUNTY AND HIGHWAY	ROUTE AND SECTION	CLASS AND AGREEMENT		FEDERAL DIVISION OFFICE	SHEET NUMBER	TOTAL SHEETS
35.6	192.0	STATE	FEDERAL	WIS. 5 N	1	24

PLAN 1 IN. = 100 FT.
PROFILE HOR. 1 IN. = 100 FT. VERT. 1 IN. = 10 FT.
CROSS SECTIONS HOR. 1 IN. = 5 FT. VERT. 1 IN. = 5 FT.

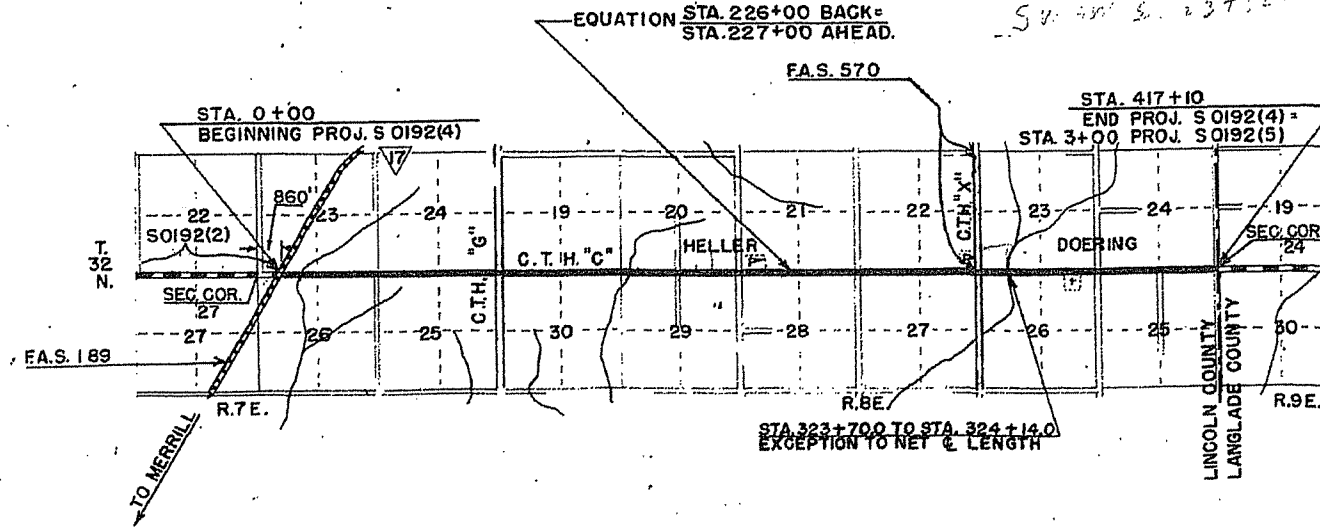
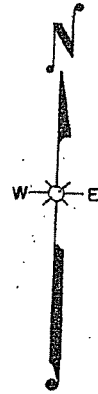
Cross Sections Missing Shts. 17-21



TYPICAL FINISHED SECTION 4" - 6" - 12" S & G FILL
SEE MISCELLANEOUS QUANTITY SHEET FOR LOCATION

DEPTH S & G FILL	X	C.Y. PER STA.
4"	14'-0"	41.7
6"	14'-6"	63.6
12"	16'-0"	134.0

- STANDARD DETAIL DRAWINGS ARE AS FOLLOWS:
- | | |
|--|---------|
| DRAWING NO. | |
| DETAILS OF PRIVATE ENTRANCE & SIDE ROAD APPRS. | 1-3.1.1 |
| C.G.S.M. PIPE ARCH | 6-5.1.2 |
| MARKER POSTS FOR CULVERTS | 7-1.1.1 |
| CONSTRUCTION BARRIAGE | 7-4.1.1 |
| SECTIONAL PLATE PIPE ARCH | 6+5.2.1 |



CONVENTIONAL SIGNS

- STATE LINE
- COUNTY LINE
- TOWNSHIP OR RANGE LINE
- SECTION LINE
- NEW RIGHT OF WAY LINE
- PRESENT RIGHT OF WAY LINE
- WIRE FENCE { WOVEN, BARBED }
- LOT LINE
- CORPORATE OR CITY LIMITS
- PROPERTY LINE
- TRAVELED WAY OR P.E.
- RAILROADS
- BASE OR SURVEY LINE

- CULVERTS IN PLACE
- CULVERTS REQUIRED
- DROP INLET
- POWER POLE
- TELEPHONE OR TELEGRAPH POLE
- RIGHT OF WAY MARKERS
- REFERENCE STAKE FOR HUBS ONLY
- MARSH
- HEDGE
- TREES
- GROUND ELEVATION
- GRADE ELEVATION

LAYOUT

SCALE 1" = 1 MILE

TOTAL NET LENGTH OF CENTERLINE = 7.872 MI.

APPROVED FOR LINCOLN COUNTY:

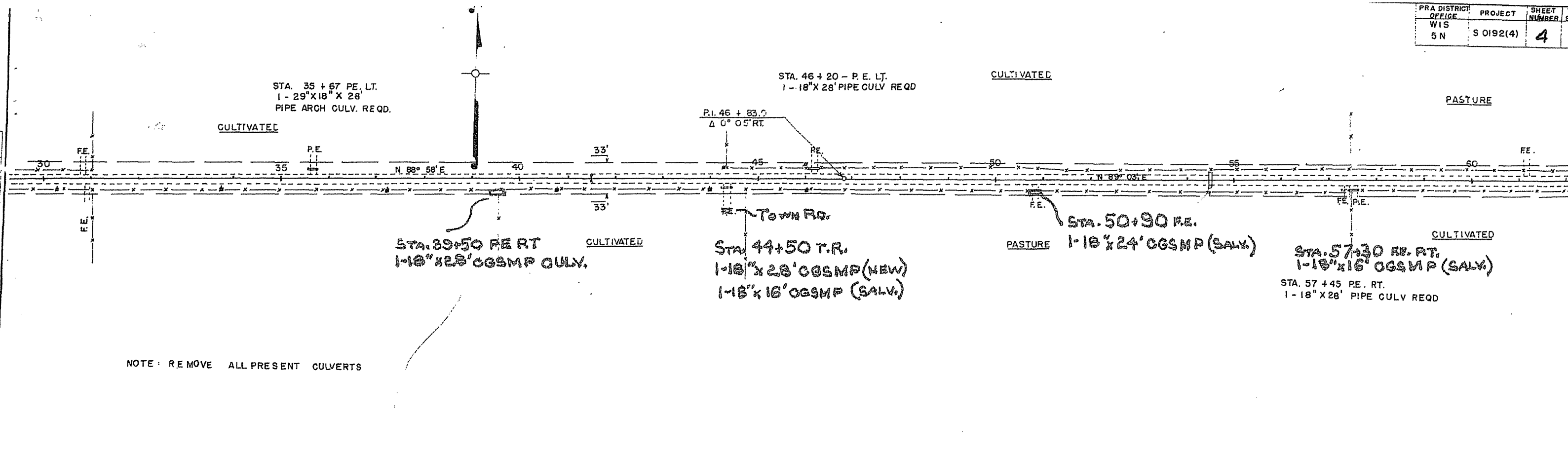
FEB. 14, 1950

FEB. 14, 1950

FEB. 14, 1950
DATE

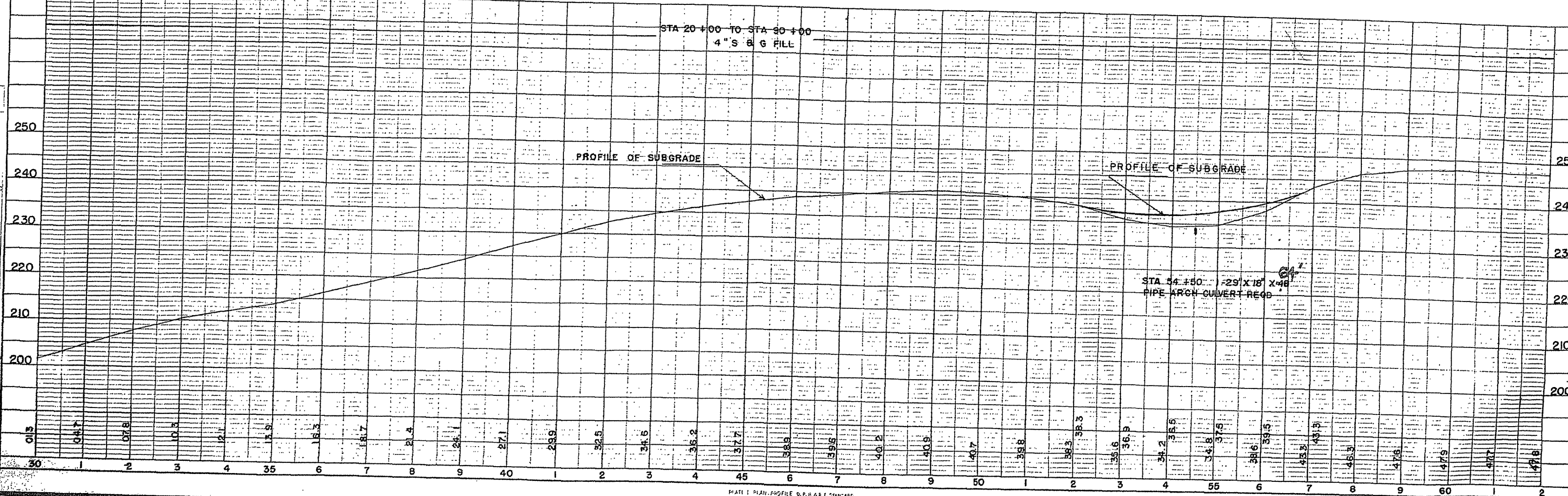
Geo. J. Thailer
W. Benschel
Albert P. Gennick
LINCOLN COUNTY HIGHWAY COMMITTEE

<p>STATE HIGHWAY COMMISSION OF WISCONSIN MADISON, WIS.</p> <p>SURVEYOR: <u>HOSTETLER</u> NOTE BOOK: <u>8292-8293</u> DIVISION COMPUTER: <u>ELTZE</u> M. O. CHECKER DIVISION CHECKER: <u>CORRECT</u></p> <p>CORRECT: DATE: <u>2/16/50</u> <i>E. J. Hostetler</i> DIVISION ENGINEER</p> <p>RECOMMENDED FOR APPROVAL: DATE: <u>2/16/50</u> <i>W. Benschel</i> CONSTRUCTION ENGINEER</p> <p>APPROVED: DATE: <u>2/16/50</u> <i>E. C. Rustin</i> STATE HIGHWAY ENGINEER</p>	<p>FEDERAL WORKS AGENCY PUBLIC ROADS ADMINISTRATION</p> <p>RECOMMENDED FOR APPROVAL:</p> <div style="border: 1px solid black; padding: 5px; text-align: center;"> <p>DISTRICT ENGINEER PUBLIC ROADS ADMINISTRATION FEDERAL WORKS AGENCY</p> </div> <p>APPROVED:</p> <div style="border: 1px solid black; padding: 5px; text-align: center;"> <p>COMMISSIONER PUBLIC ROADS ADMINISTRATION FEDERAL WORKS AGENCY</p> </div>
---	--



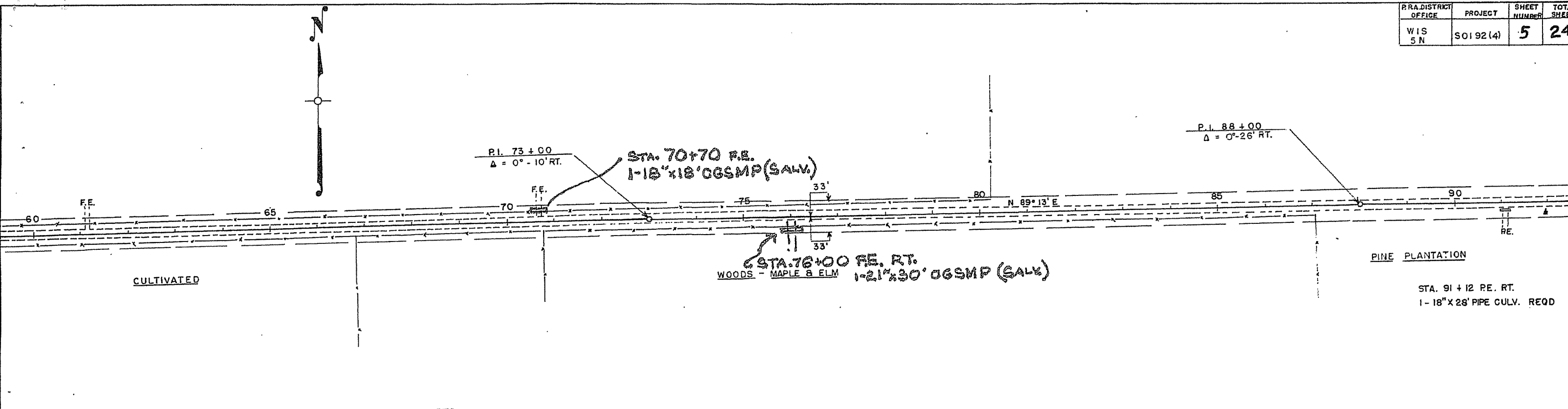
NOTE: REMOVE ALL PRESENT CULVERTS

NET LENGTH OF CENTERLINE STA. 30 - 62 = 3200 LIN. FT.



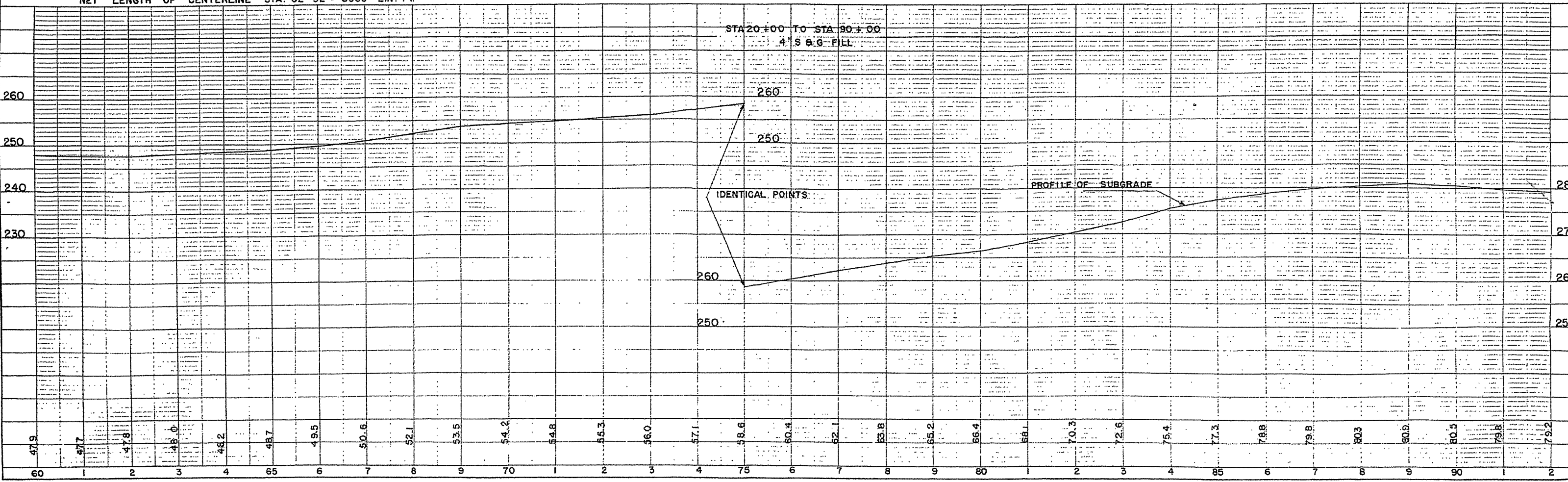
NO. 1000
 GRANDS CHIEF
 AL. M. KOTLU
 STRUCTURE DIVISION
 NO. 1000

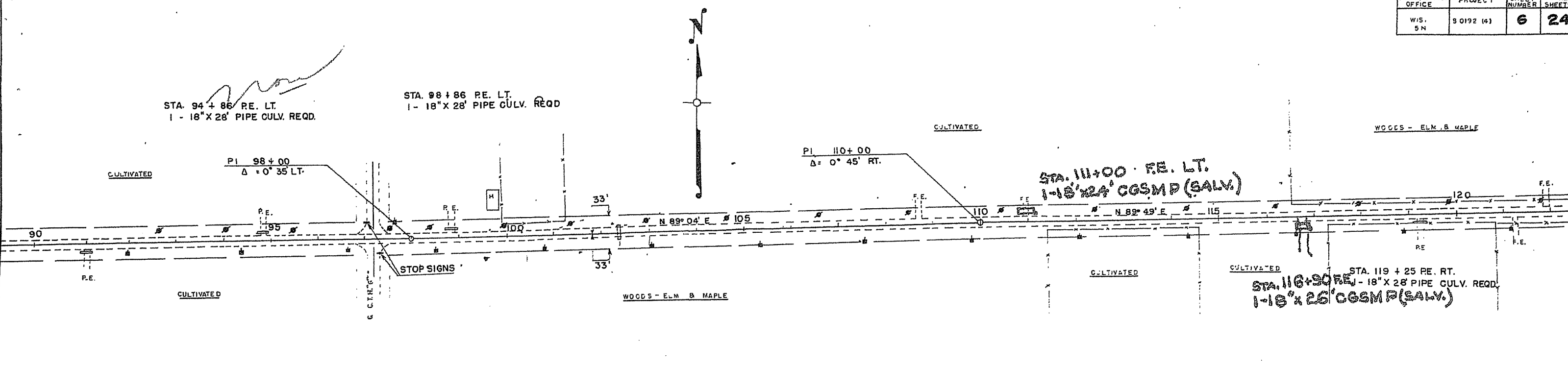
NO. 1000
 GRANDS CHIEF
 AL. M. KOTLU
 STRUCTURE DIVISION
 NO. 1000



NOTE: REMOVE ALL PRESENT CULVERTS

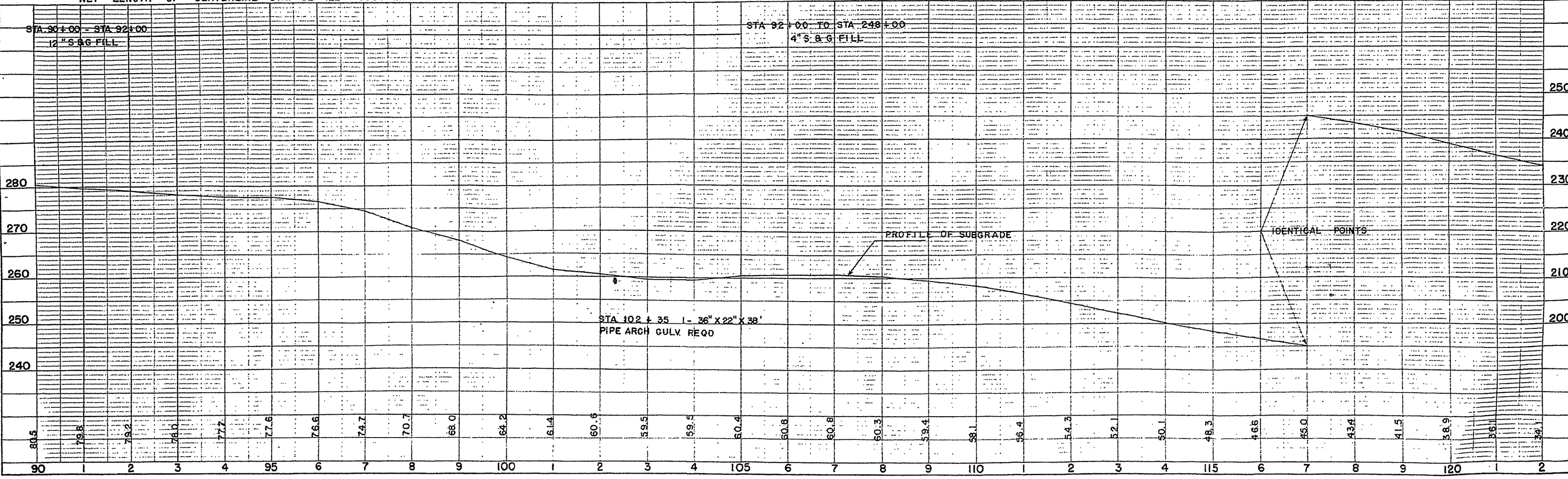
NET LENGTH OF CENTERLINE STA. 62-92 = 3000 LIN. FT.

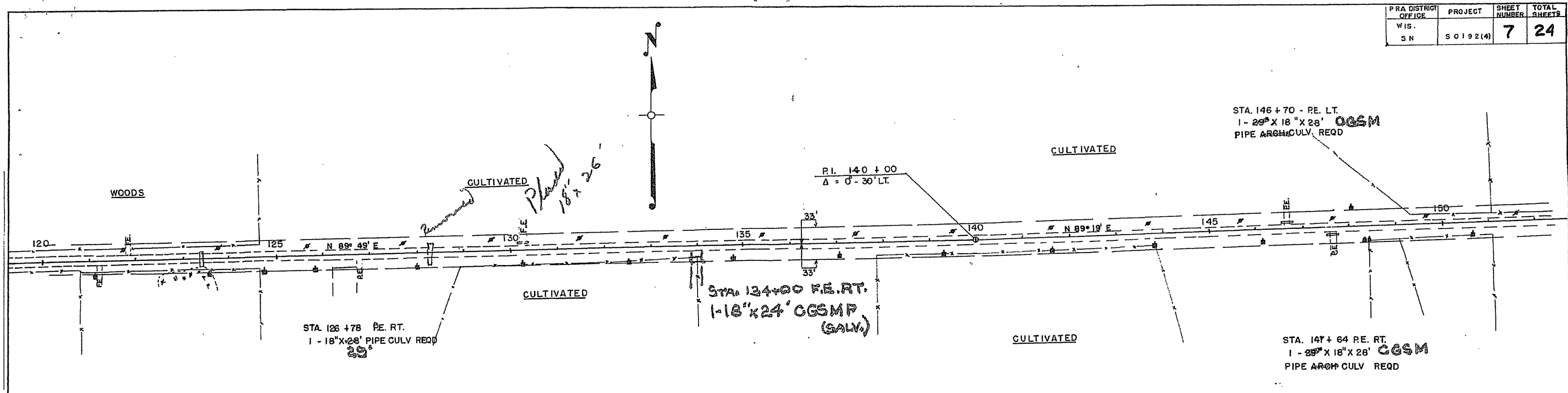




NOTE: REMOVE ALL PRESENT CULVERTS

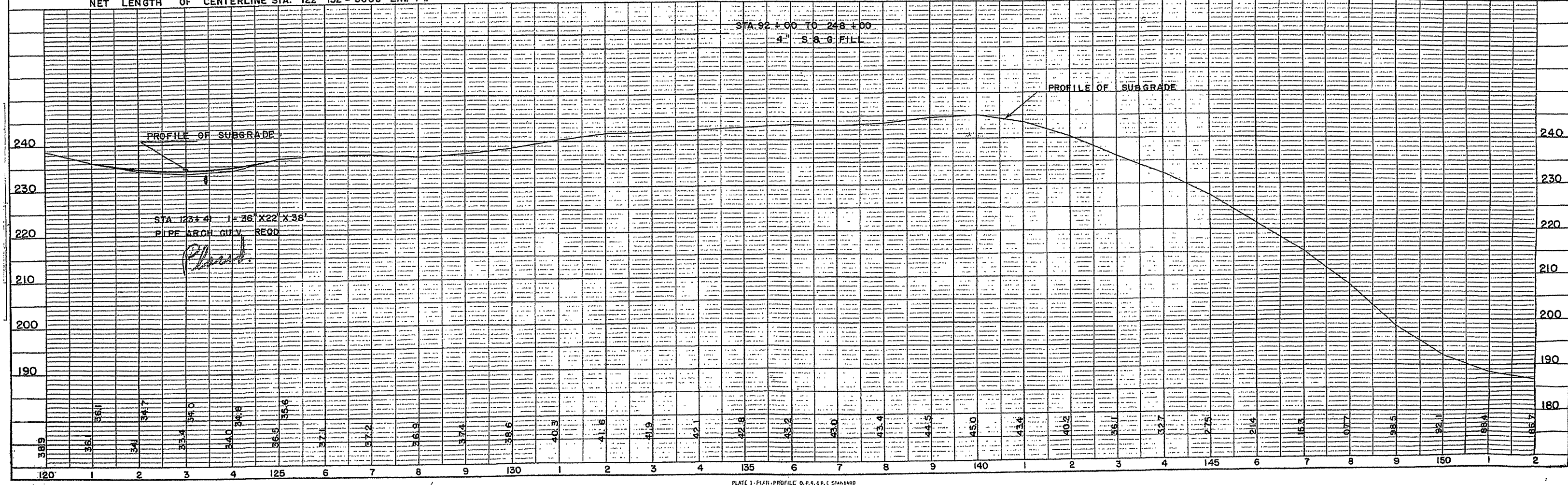
NET LENGTH OF CENTERLINE STA. 92 - 122 = 3000 LIN. FT.



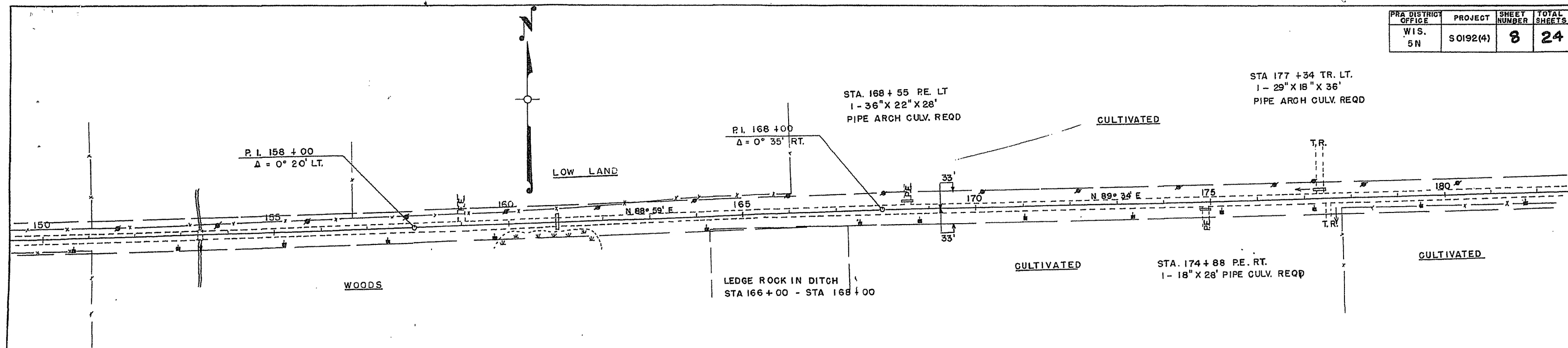


NOTE - REMOVE ALL PRESENT CULVERTS

NET LENGTH OF CENTERLINE STA. 122-152 = 3000 LIN. FT.

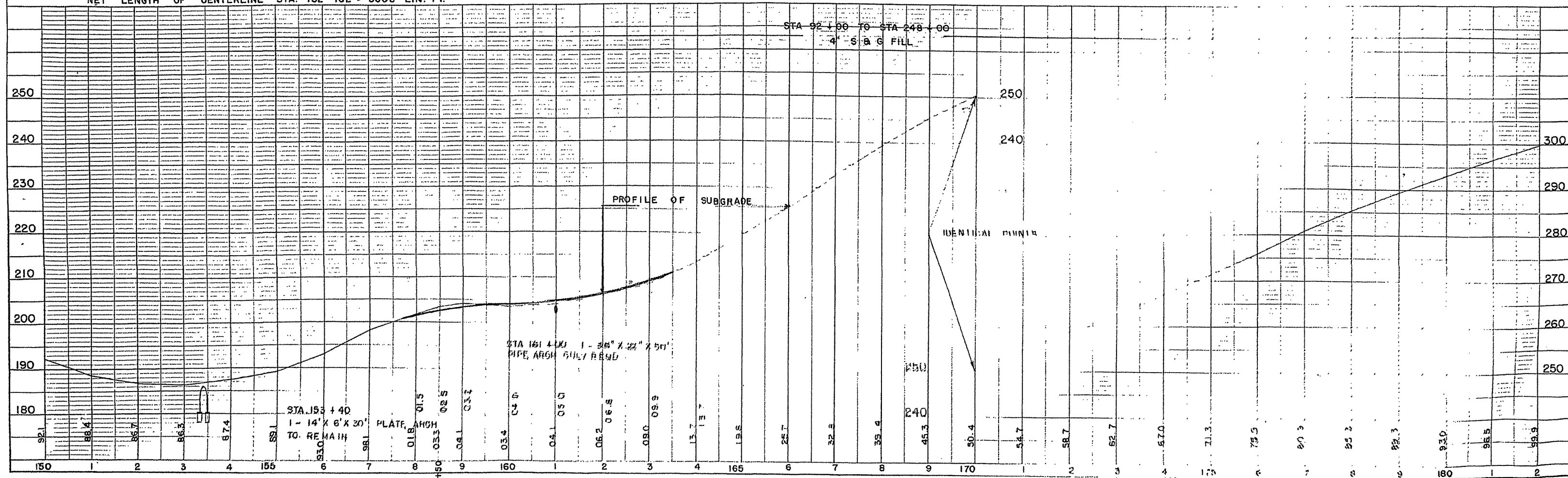


PRA DISTRICT OFFICE	PROJECT	SHEET NUMBER	TOTAL SHEETS
WIS. 5N	SO192(4)	8	24

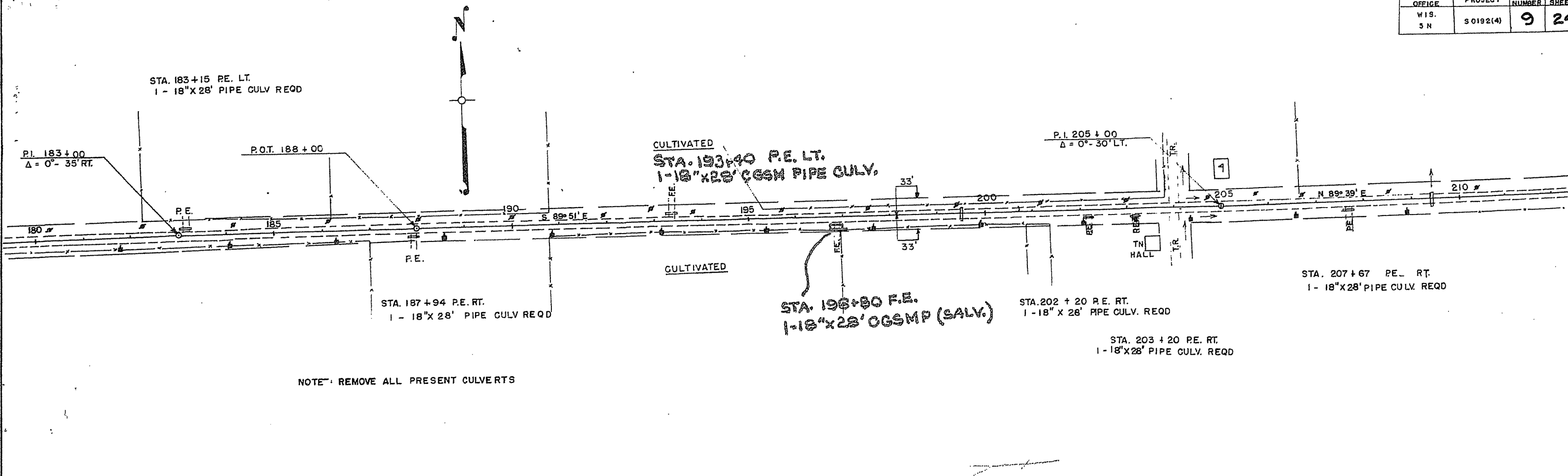


NOTE: REMOVE ALL PRESENT CULVERTS
EXCEPTION TO NOTE STA 153+40

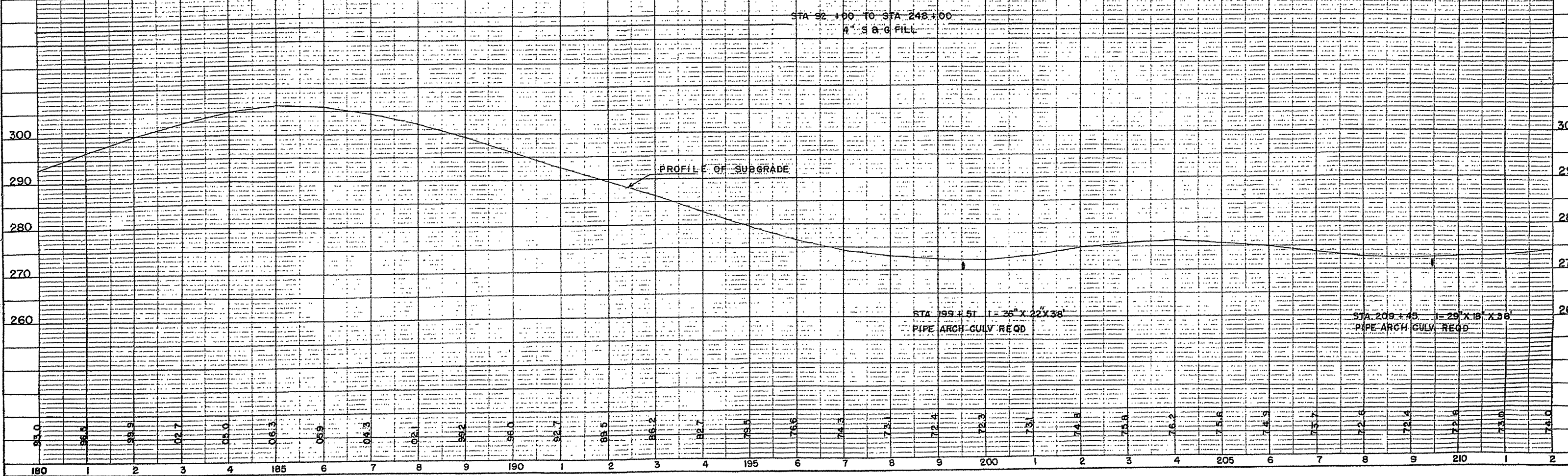
NET LENGTH OF CENTERLINE STA. 152-182 = 3000 LIN. FT.

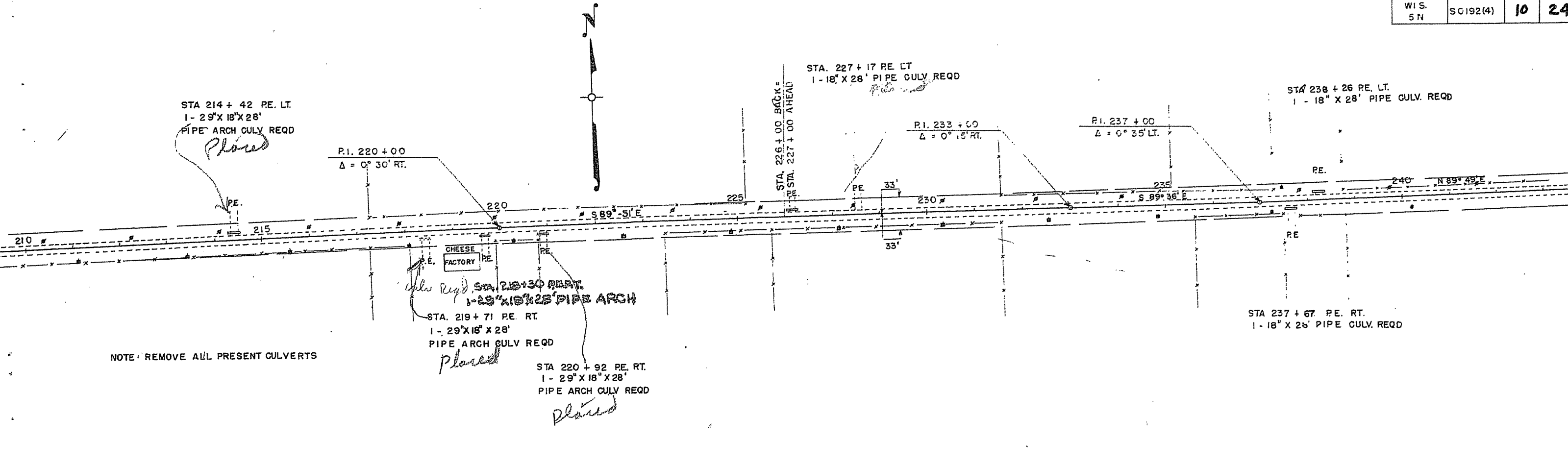


PRA DISTRICT OFFICE	PROJECT	SHEET NUMBER	TOTAL SHEETS
WIS. 5 N	S 0192(4)	9	24

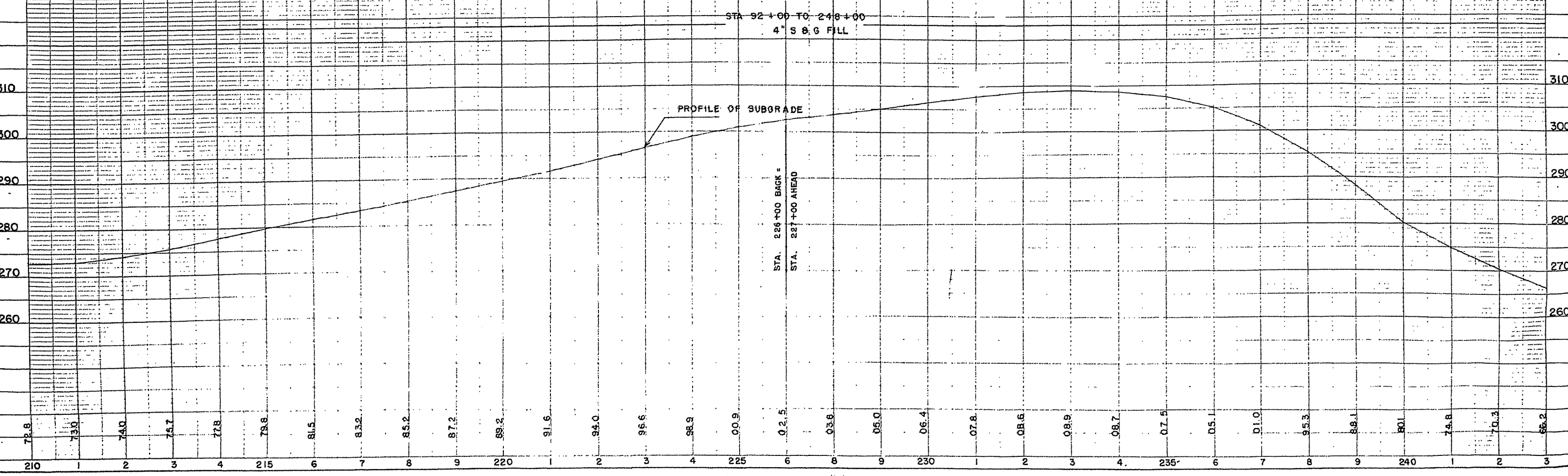


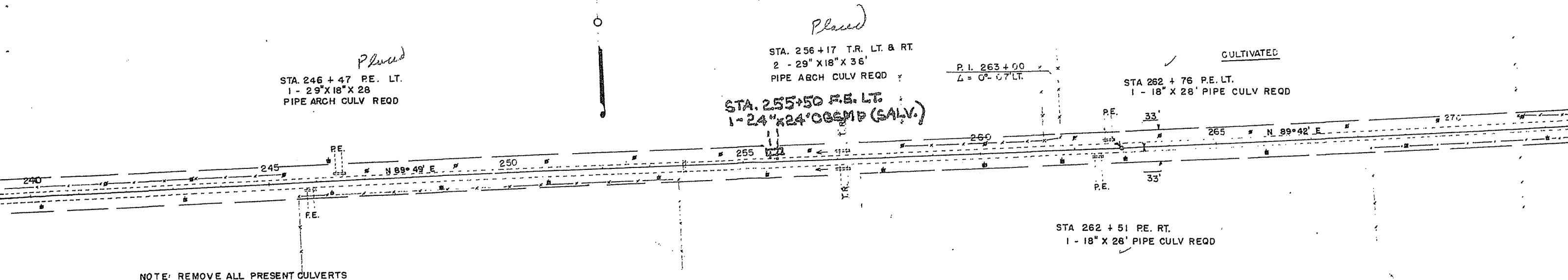
NET LENGTH OF CENTERLINE STA. 182 - 212 = 3000 LIN. FT.





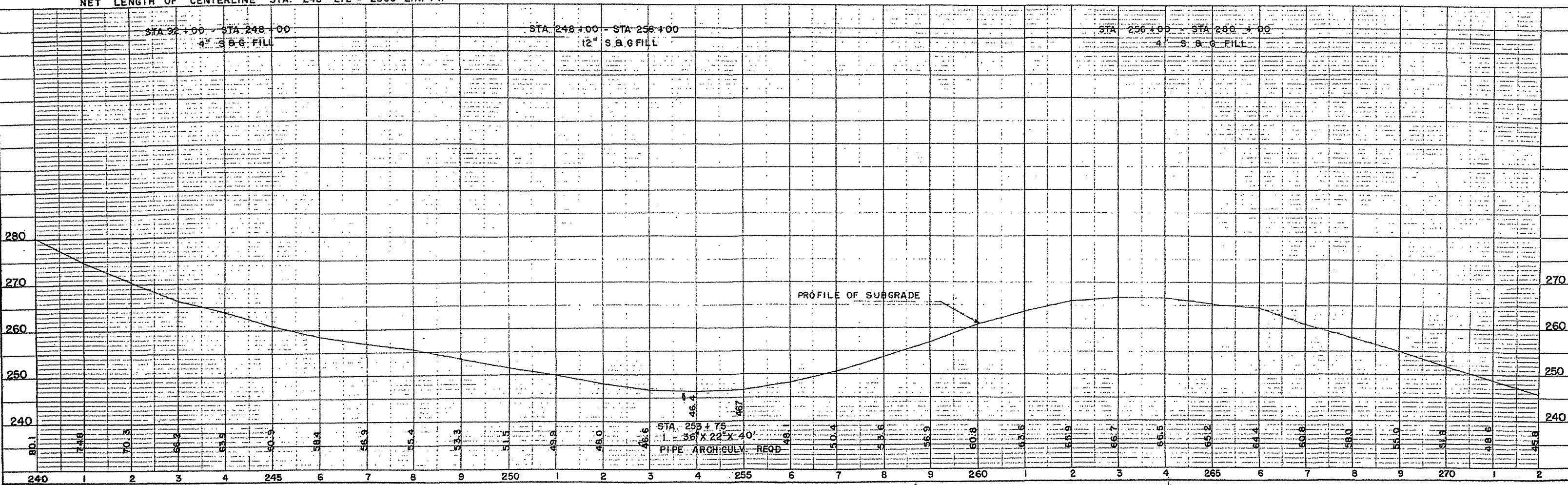
NET LENGTH OF CENTERLINE STA. 212 - 243 = 3000 LIN. FT.

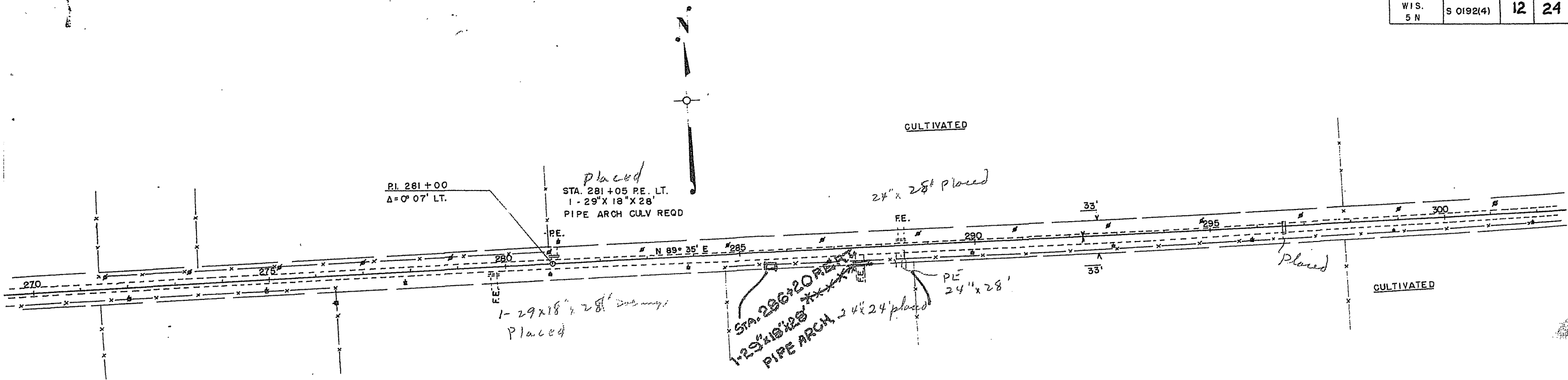




NOTE: REMOVE ALL PRESENT CULVERTS

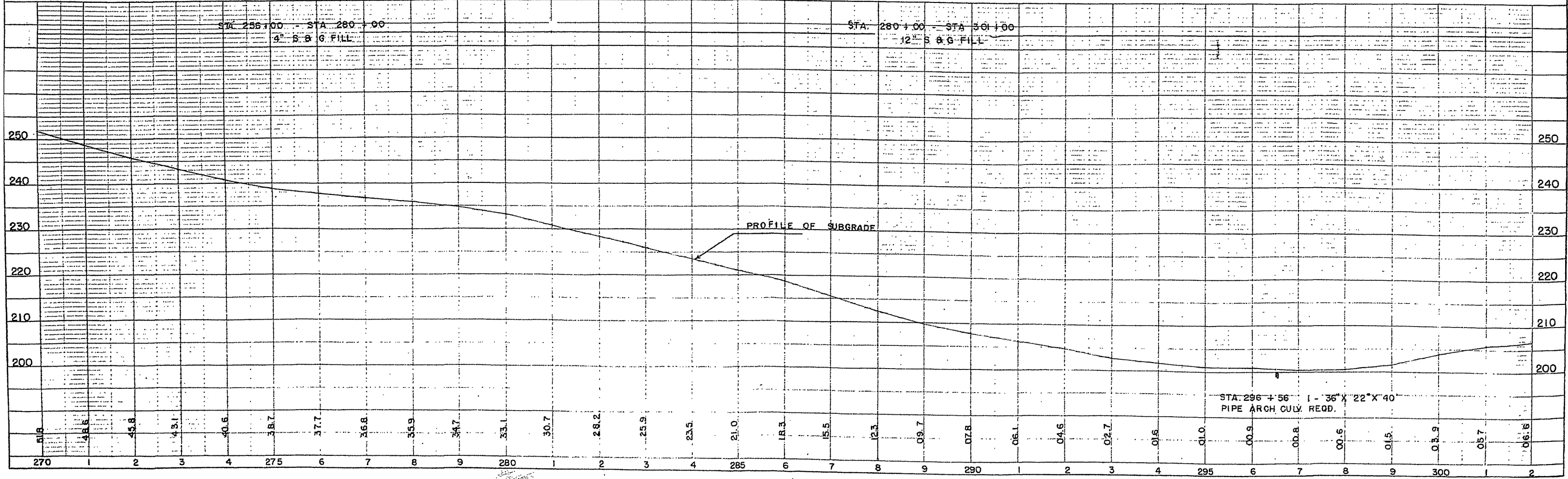
NET LENGTH OF CENTERLINE STA. 243-272 = 2900 LIN. FT.



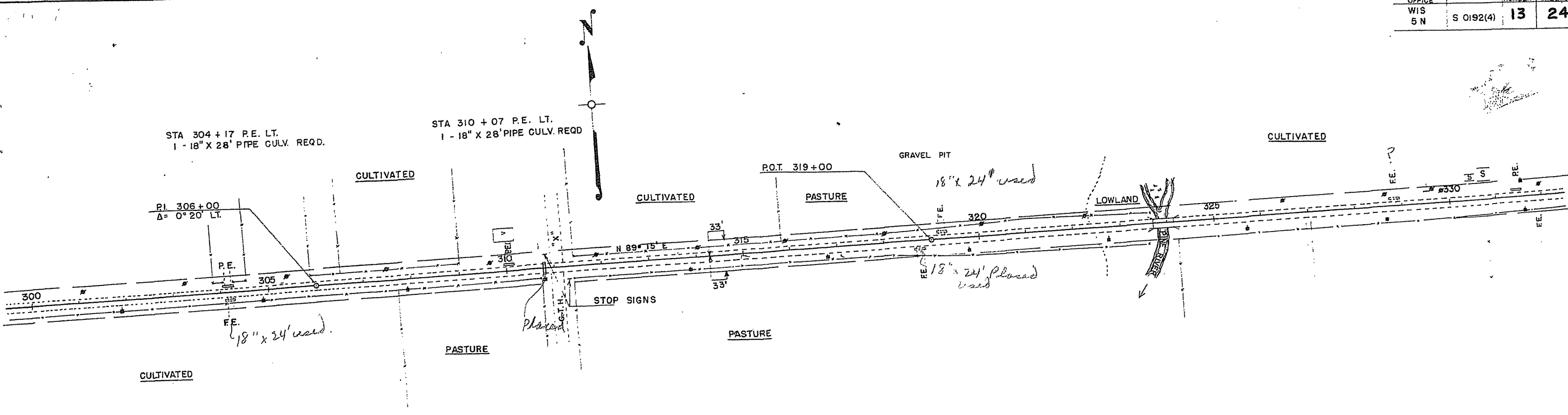


NOTE: REMOVE ALL PRESENT CULVERTS

NET LENGTH OF CENTERLINE STA. 272 - 302 = 3000 LIN. FT.

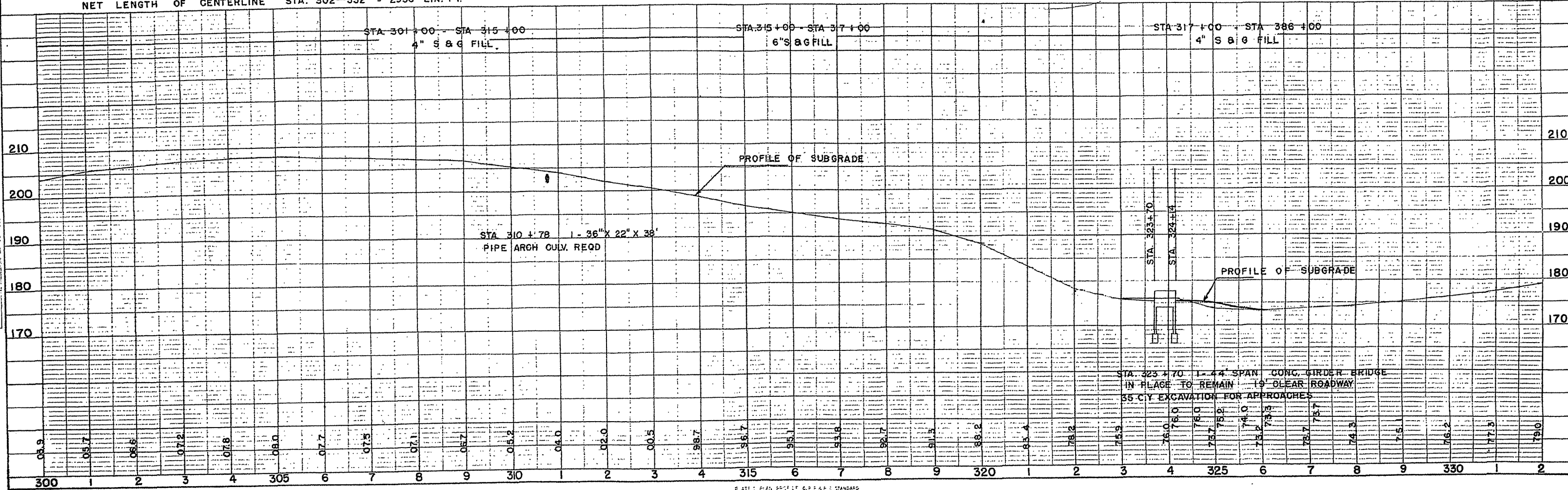


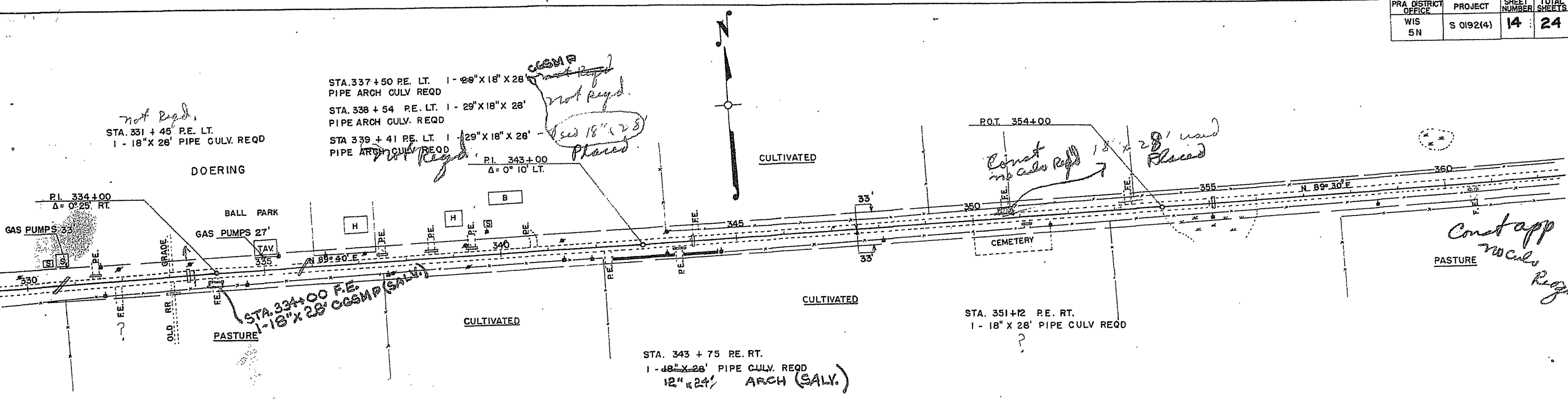
STA. 296+56 1 - 36\"/>



NOTE: REMOVE ALL PRESENT CULVERTS

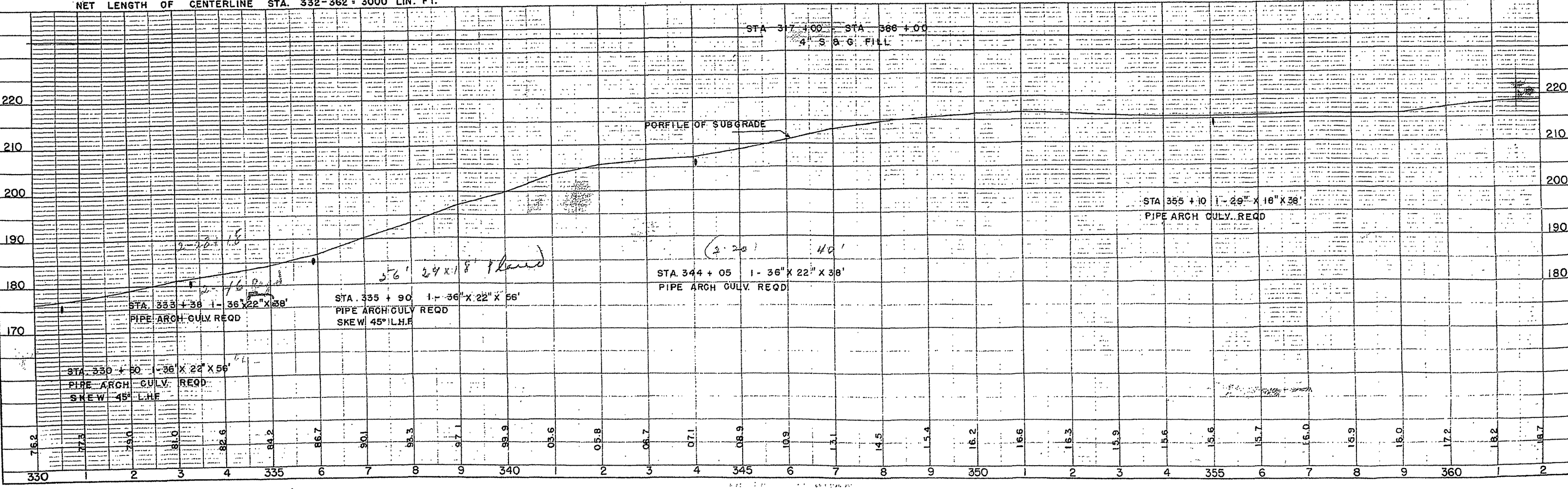
NET LENGTH OF CENTERLINE STA. 302-332 = 2956 LIN. FT.

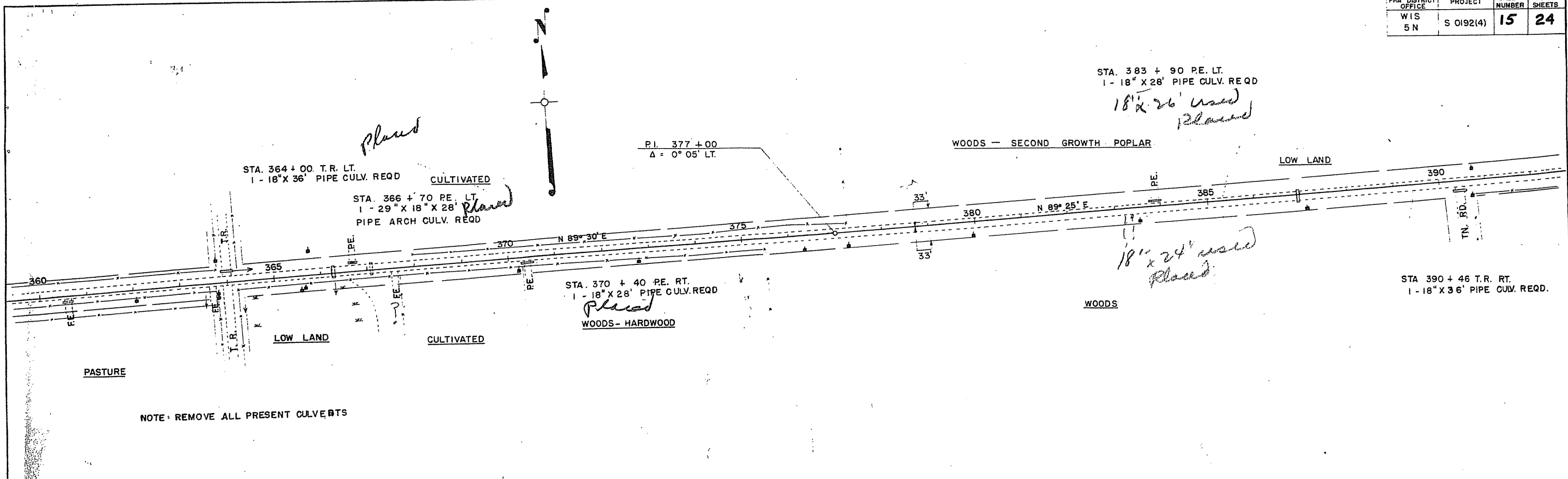




NOTE: REMOVE ALL PRESENT CULVERTS

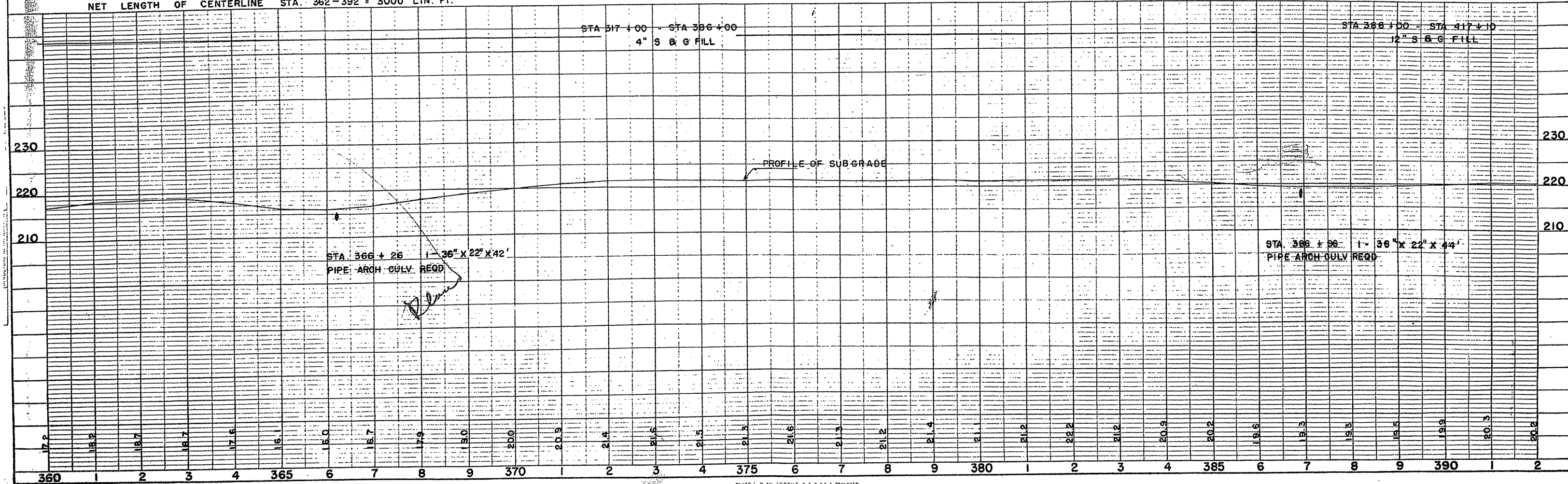
NET LENGTH OF CENTERLINE STA. 332-362 = 3000 LIN. FT.

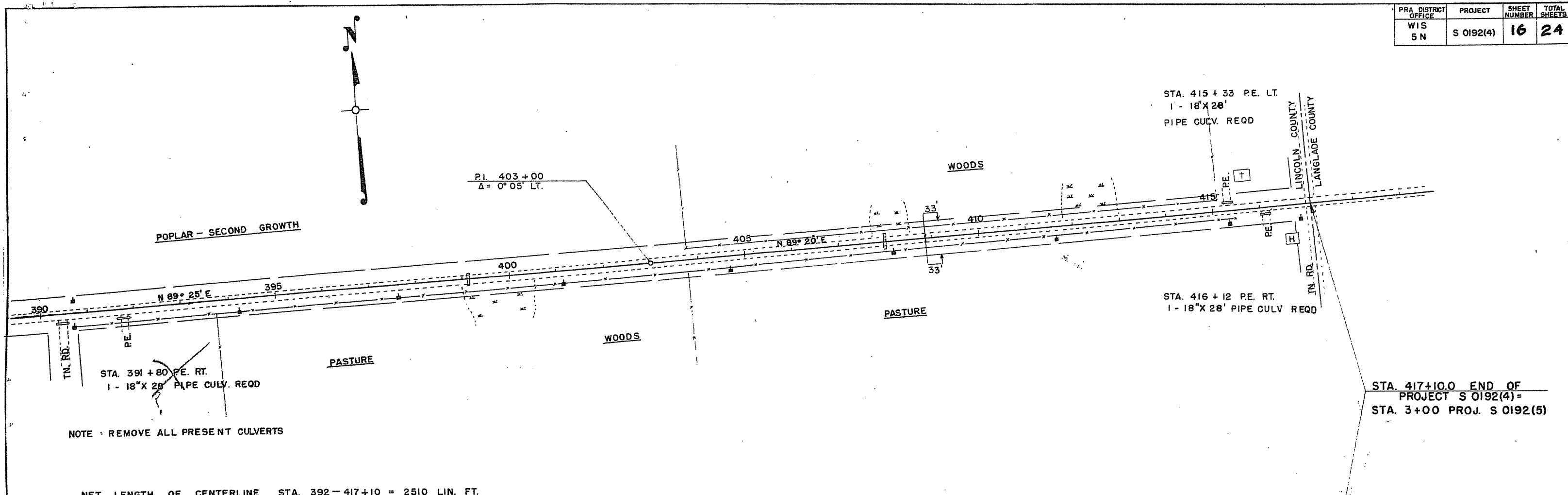




NOTE: REMOVE ALL PRESENT CULVERTS

NET LENGTH OF CENTERLINE STA. 362-392 = 3000 LIN. FT.

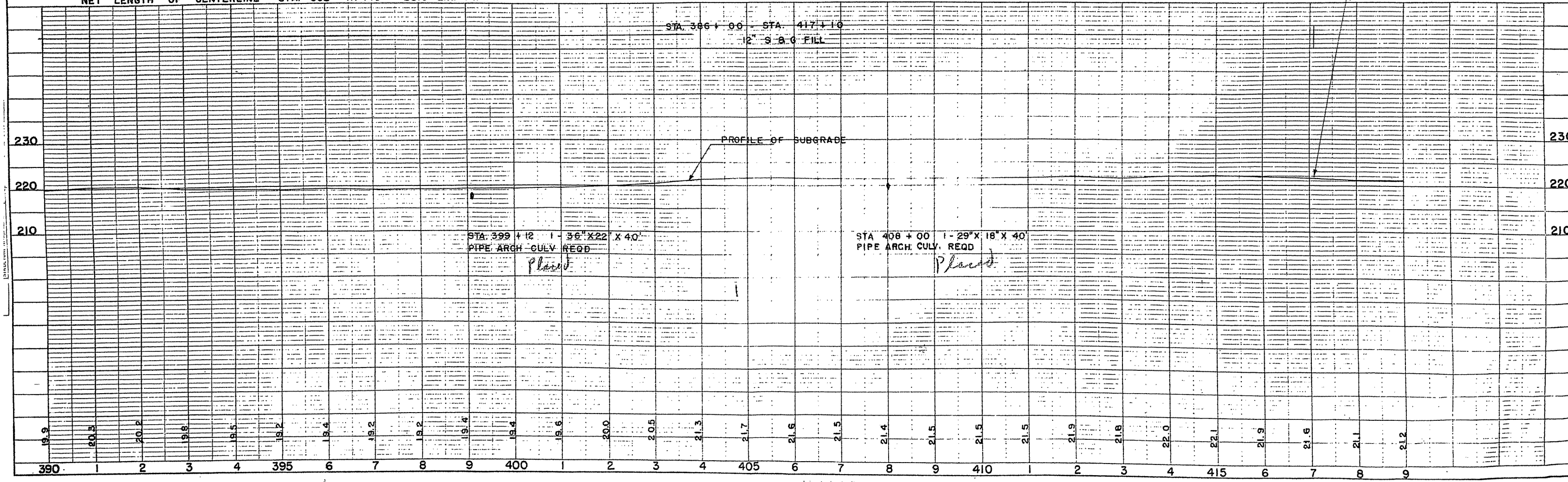




NOTE - REMOVE ALL PRESENT CULVERTS

STA. 417+10.0 END OF PROJECT S 0192(4) = STA. 3+00 PROJ. S 0192(5)

NET LENGTH OF CENTERLINE STA. 392 - 417+10 = 2510 LIN. FT.



STA. 396+00 - STA. 417+10
12' S.A.G. FILL

PROFILE OF SUBGRADE

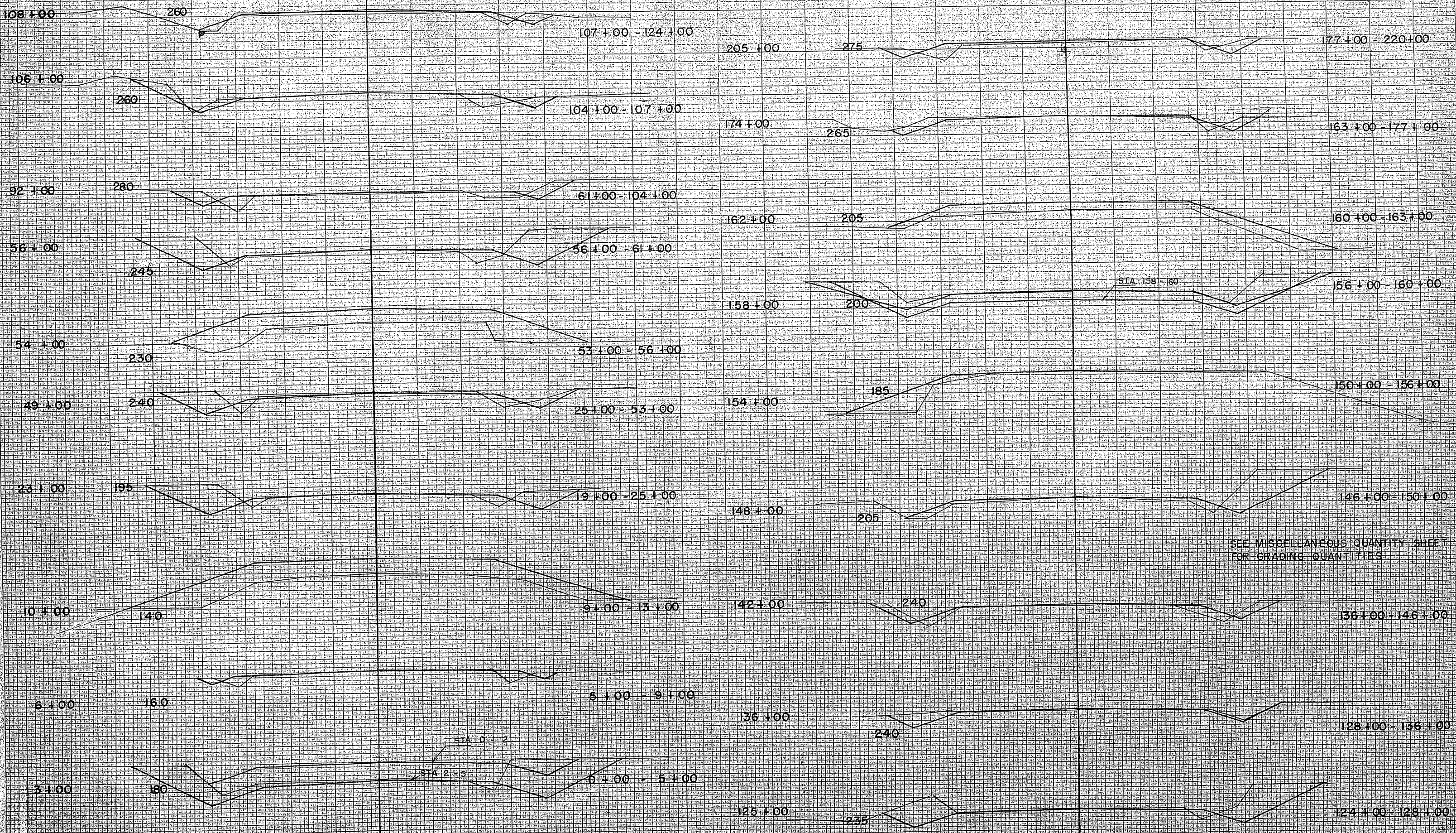
STA. 399+12 1 - 36" X 22' X 40' PIPE ARCH CULV. REQD
Plaint

STA. 408+00 1 - 29" X 18' X 40' PIPE ARCH CULV. REQD
Plaint

19.9 20.3 20.2 19.8 19.5 19.2 19.4 19.2 19.4 19.5 20.0 20.5 21.3 21.7 21.6 21.5 21.4 21.5 21.5 21.5 21.9 21.8 22.0 22.1 21.9 21.6 21.1 21.2

390 1 2 3 4 395 6 7 8 9 400 1 2 3 4 405 6 7 8 9 410 1 2 3 4 415 6 7 8 9

VERTICAL CURVE - SECTIONS

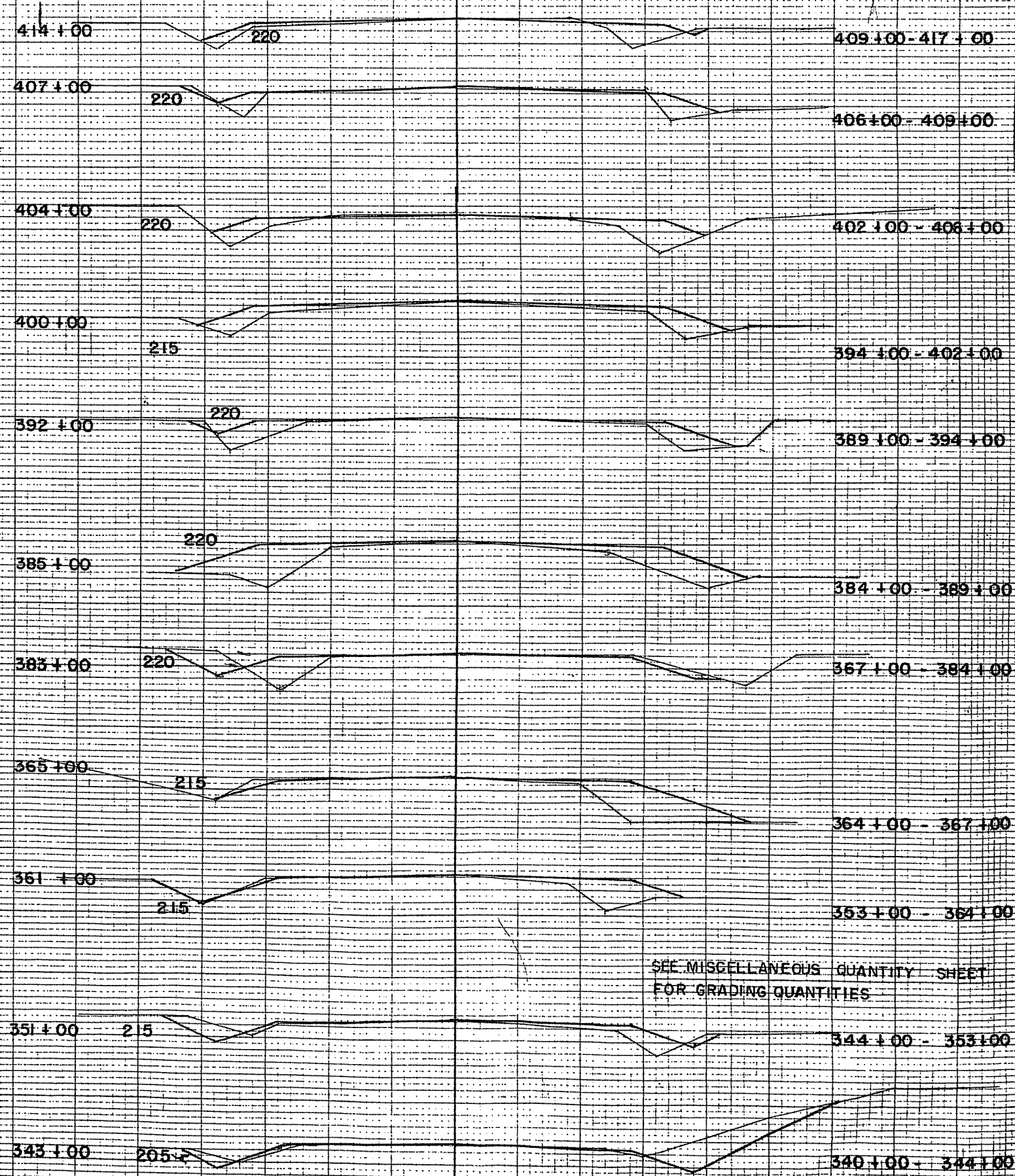
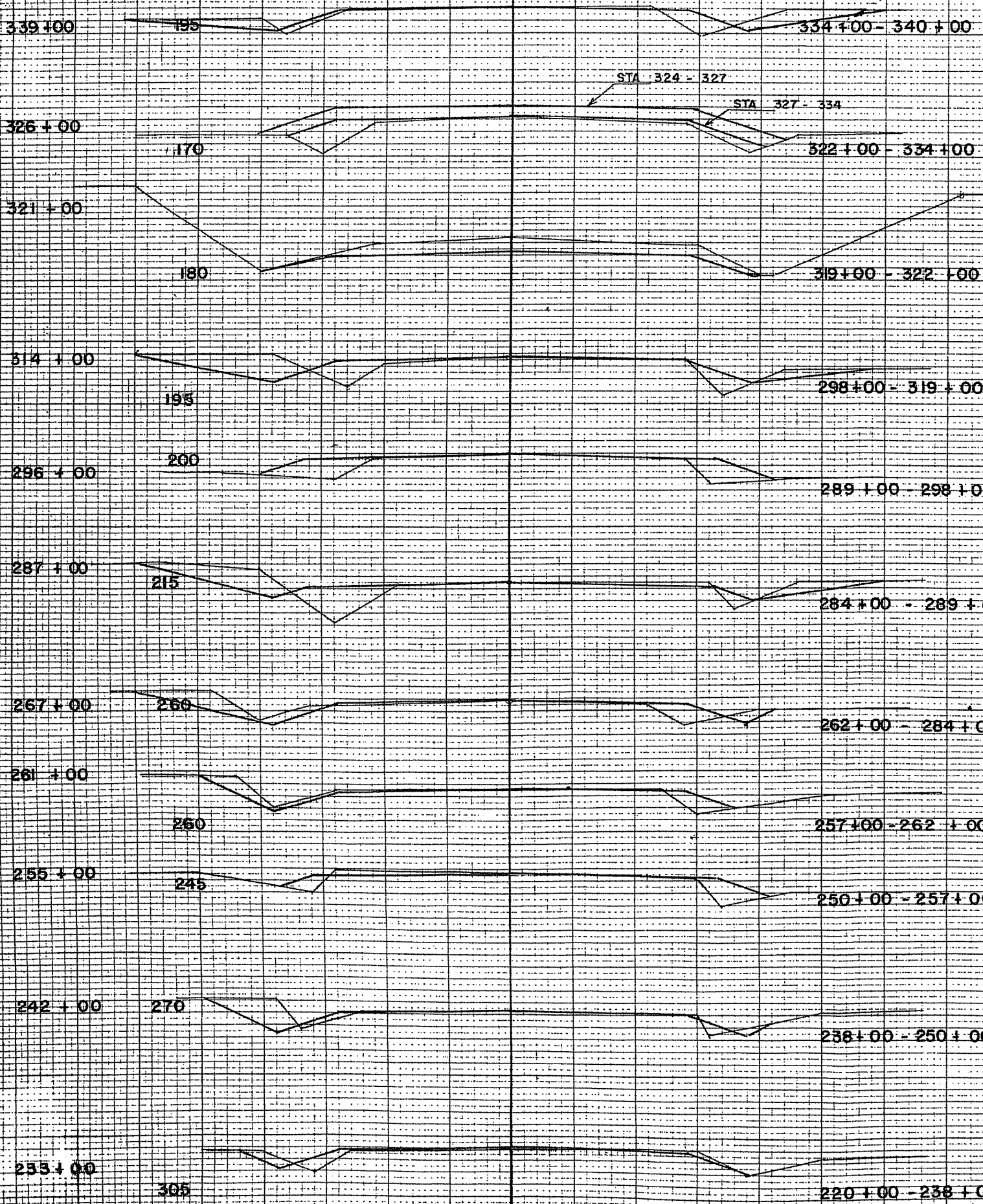


SEE MISCELLANEOUS QUANTITY SHEET FOR GRADING QUANTITIES

TYPICAL CROSS - SECTIONS

FED. ROAD DIST. NO.	STATE	PROJ. NO.	SHEET NO.	TOTAL SHEETS
4	WISC.	50124	23	24

DIVISION JOB NO.



SEE MISCELLANEOUS QUANTITY SHEET FOR GRADING QUANTITIES

SURVEY PLOTTED
NOTE BOOK NO. 5292
AREA CHECKED

SURVEY PLOTTED
NOTE BOOK NO. 5292
AREA CHECKED

19+00
185

18+00
180

17+00
175

16+00
165

15+00
160

14+00
150

13+00
145

SEE MISCELLANEOUS QUANTITY SHEET
FOR GRADING QUANTITIES