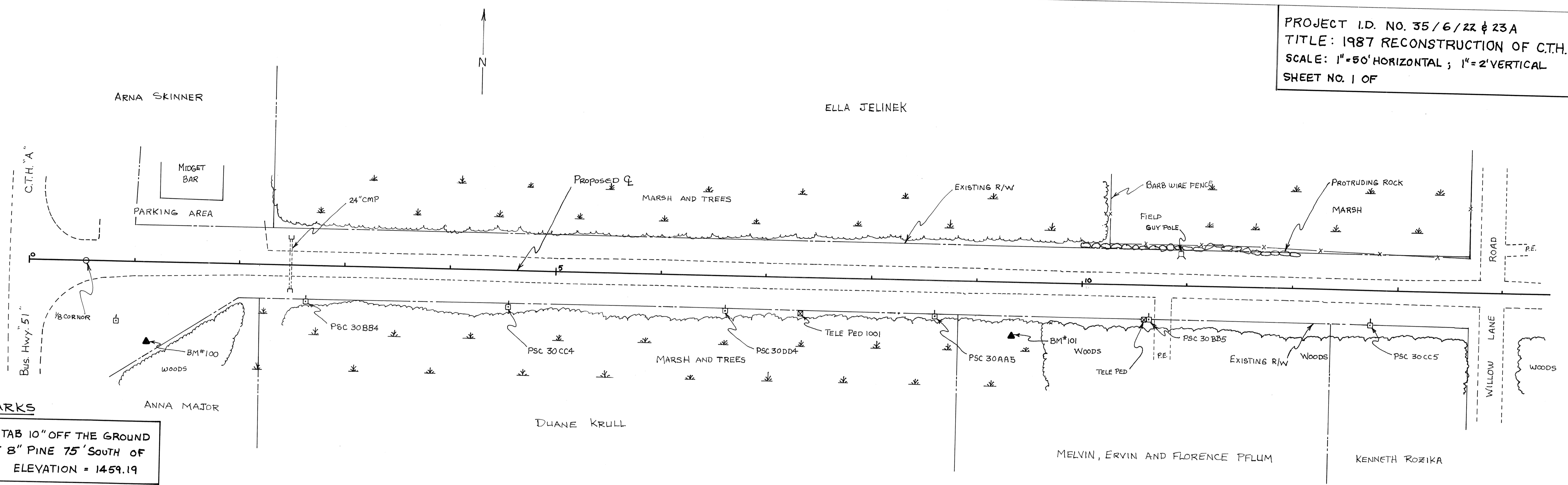


PROJECT I.D. NO. 35/6/22 & 23A  
 TITLE: 1987 RECONSTRUCTION OF C.T.H. "A"  
 SCALE: 1"=50' HORIZONTAL ; 1"=2' VERTICAL  
 SHEET NO. 1 OF

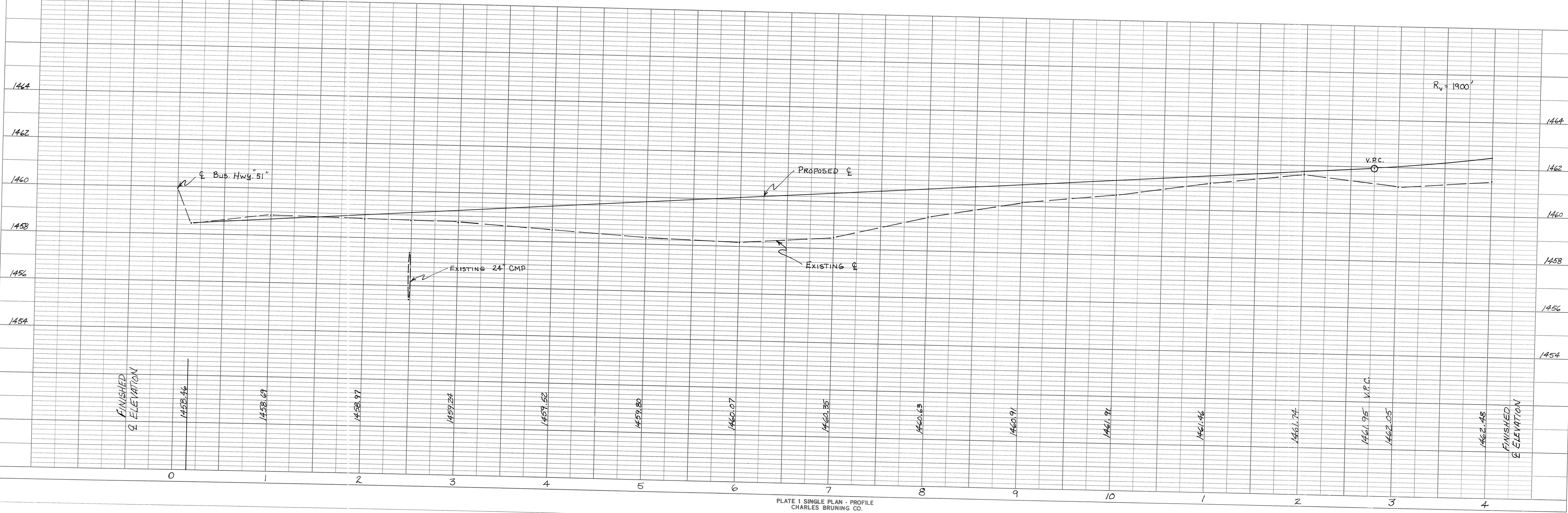
PLAN	SURVEYED	DATE
	PLOTTED	
NOTE BOOK NO.	CHECKED	
	BY	



**BENCHMARKS**

100	4" SPIKE W/ORANGE TAB 10" OFF THE GROUND ON NORTH FACE OF 8" PINE 75' SOUTH OF $\varnothing$ AT STATION 1+12. ELEVATION = 1459.19
101	4" SPIKE W/ORANGE TAB 12" OFF THE GROUND ON NORTH FACE OF 10" WHITE BIRCH 50' SOUTH OF $\varnothing$ AT STATION 9+33. ELEVATION = 1459.76

PROFILE	SURVEYED	DATE
	PLOTTED	
NOTE BOOK NO.	CHECKED	
	BY	

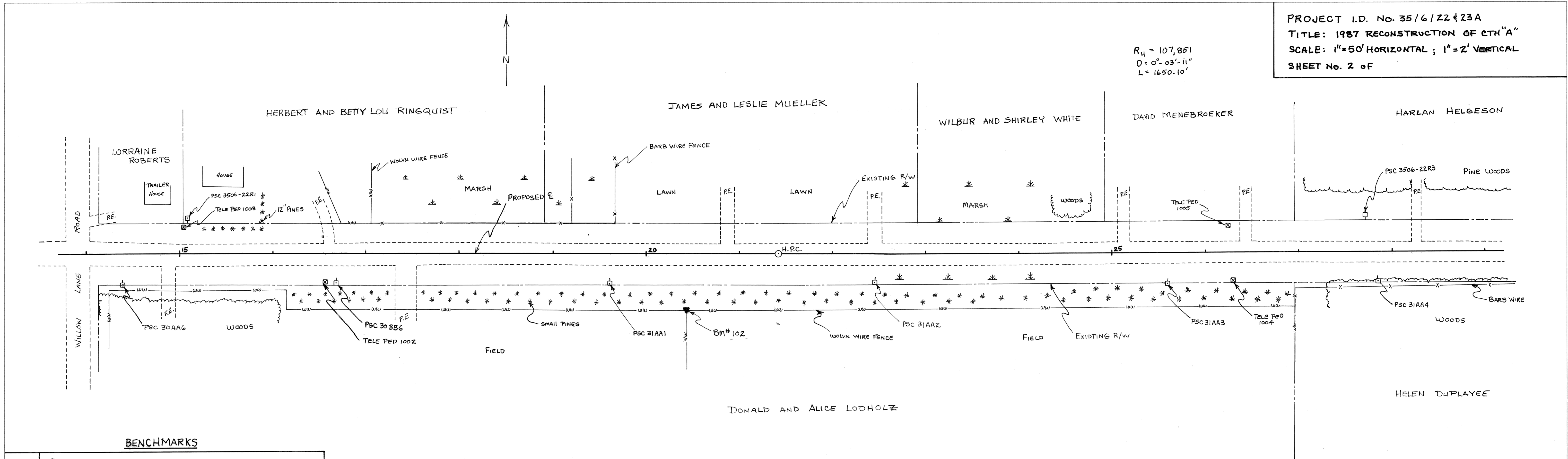


PROJECT I.D. No. 35/6/22 & 23A  
 TITLE: 1987 RECONSTRUCTION OF CTH "A"  
 SCALE: 1"=50' HORIZONTAL ; 1"=2' VERTICAL  
 SHEET No. 2 of

$R_H = 107,851$   
 $D = 0^\circ - 03' - 11"$   
 $L = 1650.10'$

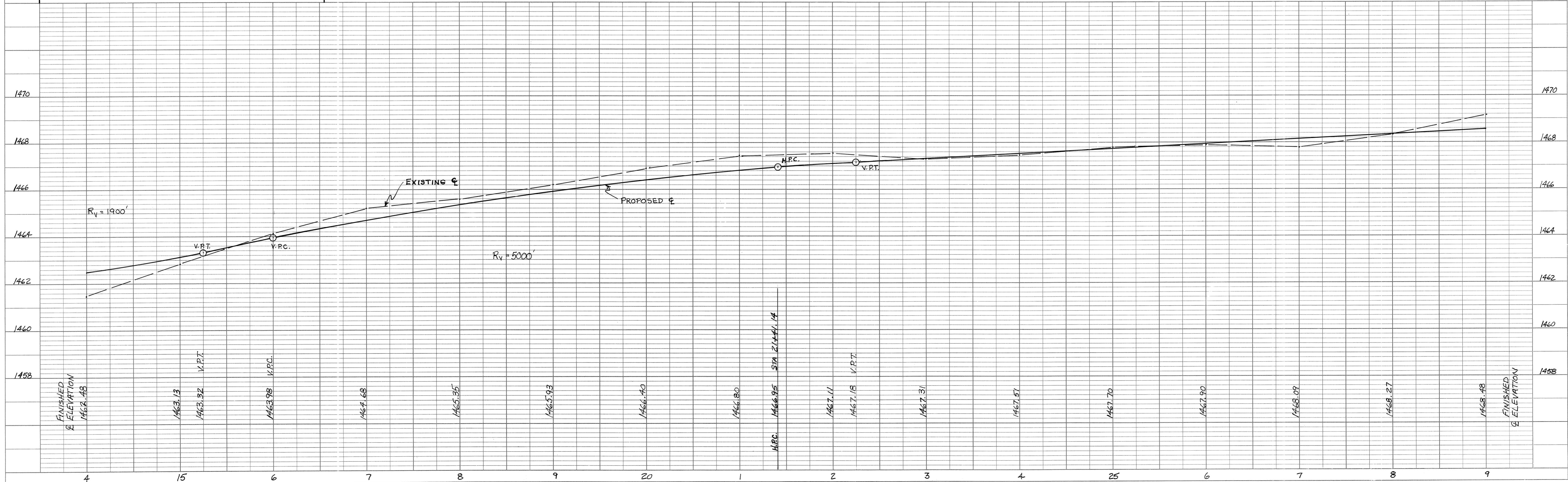
PLAN  
 SURVEYED  
 PLOTTED  
 ALIGNMENT CHECKED  
 RT. OF WAY CHECKED  
 NOTE BOOK NO. \_\_\_\_\_

PROFILE  
 SURVEYED  
 GRADES CHECKED  
 B.M. NOTED  
 STRUCTURE NOTATIONS CHECKED  
 NOTE BOOK NO. \_\_\_\_\_



**BENCHMARKS**

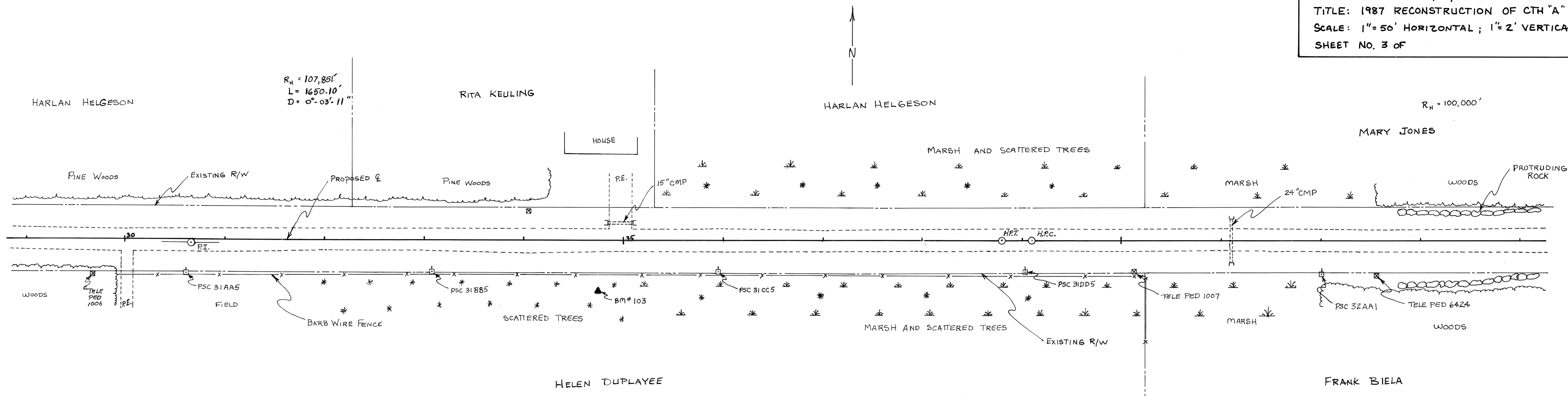
10Z 4" SPIKE W/ORANGE TAB 10" OFF THE GROUND ON NORTH FACE OF WOLVEN WIRE FENCE POST 60' SOUTH OF  $\phi$  AT STATION 20+44. ELEVATION = 1470.21



PROJECT ID. NO. 35/6/22 + 23 A  
 TITLE: 1987 RECONSTRUCTION OF CTH "A"  
 SCALE: 1" = 50' HORIZONTAL ; 1" = 2' VERTICAL  
 SHEET NO. 3 OF

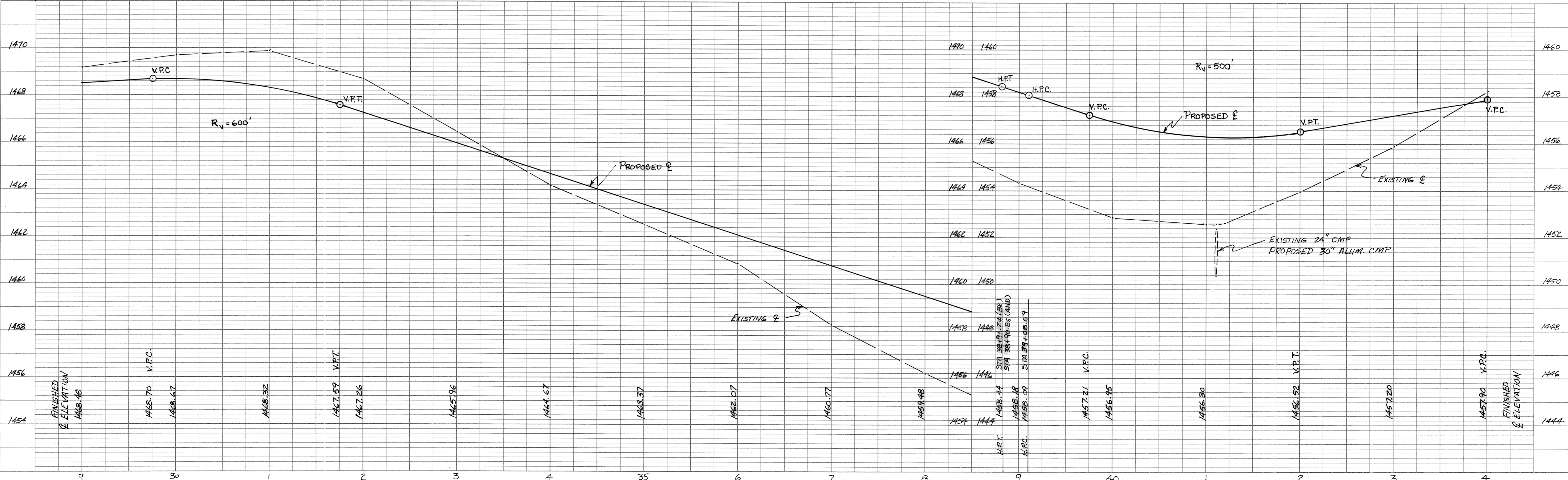
PLAN  
 SURVEYED BY: \_\_\_\_\_ DATE: \_\_\_\_\_  
 PLOTTED BY: \_\_\_\_\_ CHECKED BY: \_\_\_\_\_  
 NOTE BOOK NO. \_\_\_\_\_ RT. OF WAY CHECKED BY: \_\_\_\_\_

PROFILE  
 SURVEYED BY: \_\_\_\_\_ DATE: \_\_\_\_\_  
 PLOTTED BY: \_\_\_\_\_ CHECKED BY: \_\_\_\_\_  
 NOTE BOOK NO. \_\_\_\_\_ STRUCTURE NOTATIONS CHKD BY: \_\_\_\_\_



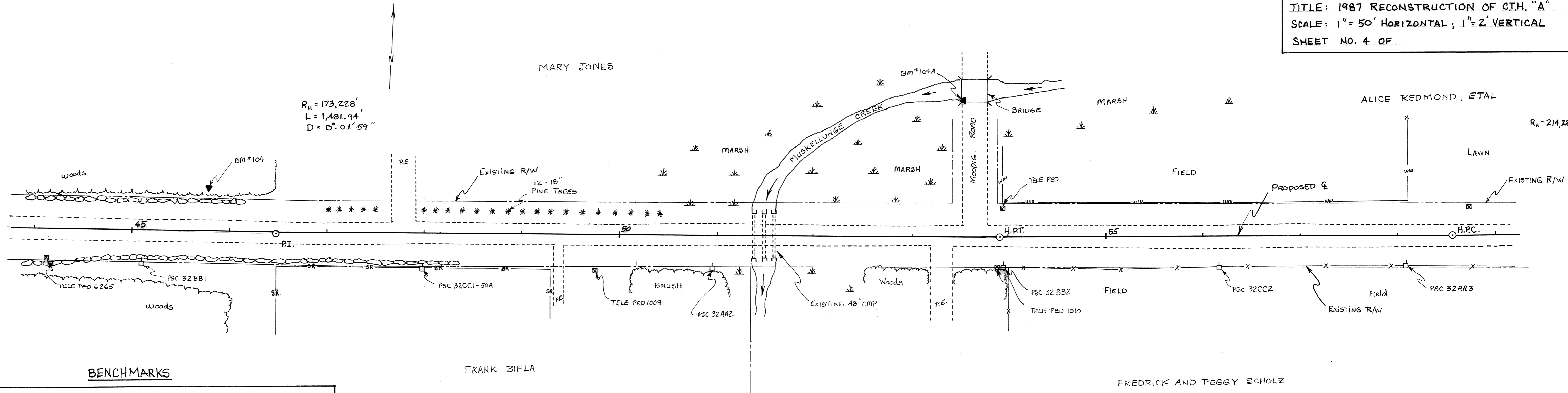
**BENCHMARKS**

103 4" SPIKE W/ORANGE TAB 12" OFF THE GROUND ON NORTH FACE OF 8" BALSAM 47' SOUTH OF  $\mathcal{E}$  AT STATION 34+74. ELEVATION = 1462.64



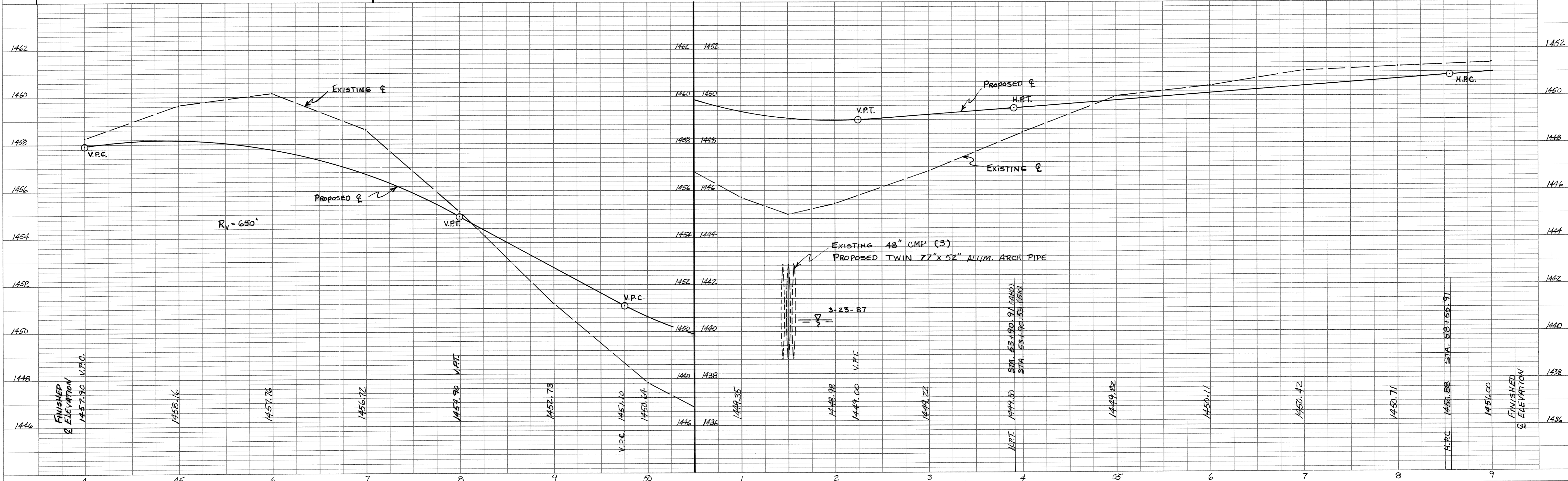
DATE	BY
SURVEYED	CHECKED
PLOTTED	INSTRUMENT CHECKED
NOTE BOOK NO.	DATE

DATE	BY
SURVEYED	CHECKED
PLOTTED	GRADES CHECKED
NOTE BOOK NO.	STRUCTURE NOTATIONS CHECKED



**BENCHMARKS**

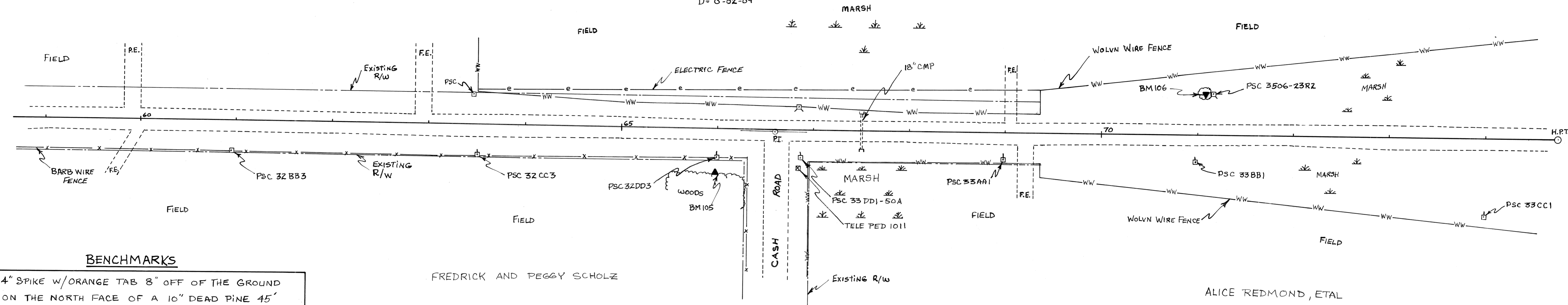
- 104 4" SPIKE W/ORANGE TAB 8" OFF OF THE GROUND ON SOUTH FACE OF A 6" POPLAR 50' NORTH OF C AT STATION 45+74. ELEVATION = 1462.23
- 104A ORANGE PAINTED "X" 6" OFF OF THE PAVEMENT ON SOUTHWEST TOP OF CURB OF CONC. WALL OF BRIDGE 137' NORTH OF C AT STA 53+52. ELEV. = 1445.89



PROJECT I.D. NO. 35/6/22 & 23 A  
 TITLE: 1987 RECONSTRUCTION OF C.T.H. "A"  
 SCALE: 1" = 50' HORIZONTAL ; 1" = 2' VERTICAL  
 SHEET NO. 5 OF

ALICE REDMOND, ETAL

$R_H = 159,963'$   
 $L = 1621.41'$   
 $D = 0^{\circ}02'09''$

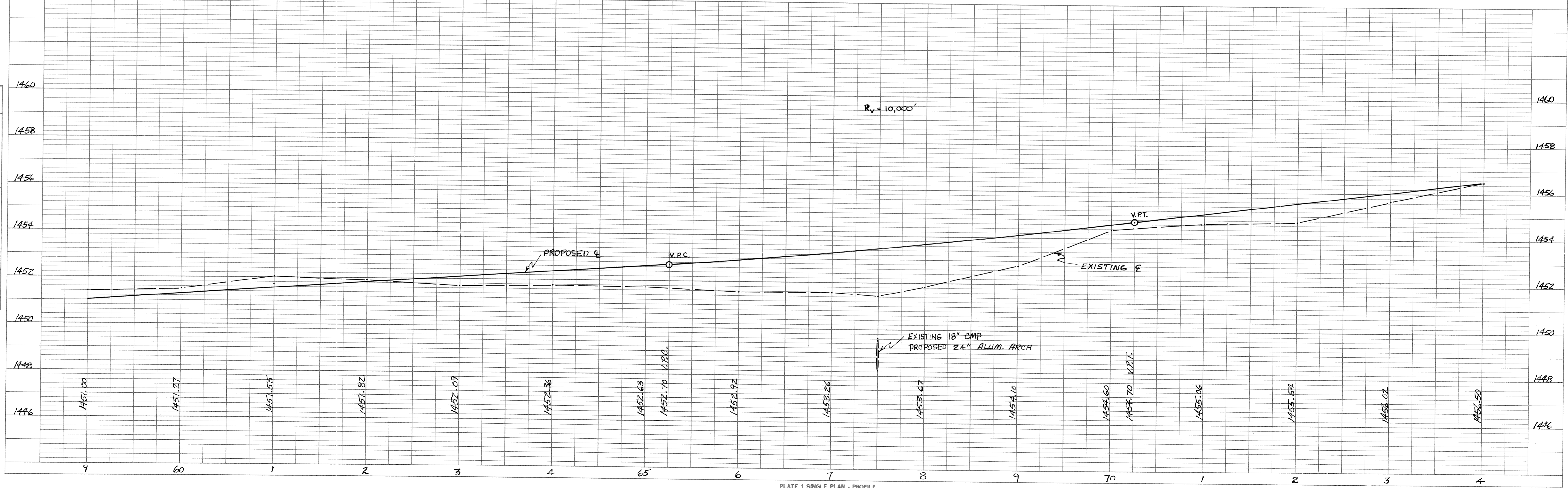


**BENCHMARKS**

105	4" SPIKE W/ORANGE TAB 8" OFF OF THE GROUND ON THE NORTH FACE OF A 10" DEAD PINE 45' SOUTH OF $\phi$ AT STATION 66+00. ELEVATION = 1451.95
106	4" SPIKE W/ORANGE TAB 10" OFF OF THE GROUND ON THE SOUTH FACE OF A 18" PINE 43' NORTH OF $\phi$ AT STATION 71+09. ELEVATION = 1453.62

FREDRICK AND PEGGY SCHOLZ

ALICE REDMOND, ETAL



DATE	
BY	
SURVEYED	
PLOTTED	
ALIGNED CHECKED	
RT. OF WAY CHECKED	
NOTE BOOK NO.	
PLAN	

DATE	
BY	
SURVEYED	
PLOTTED	
ALIGNED CHECKED	
STRUCTURE NOTATIONS CHKD	
NOTE BOOK NO.	
PROFILE	