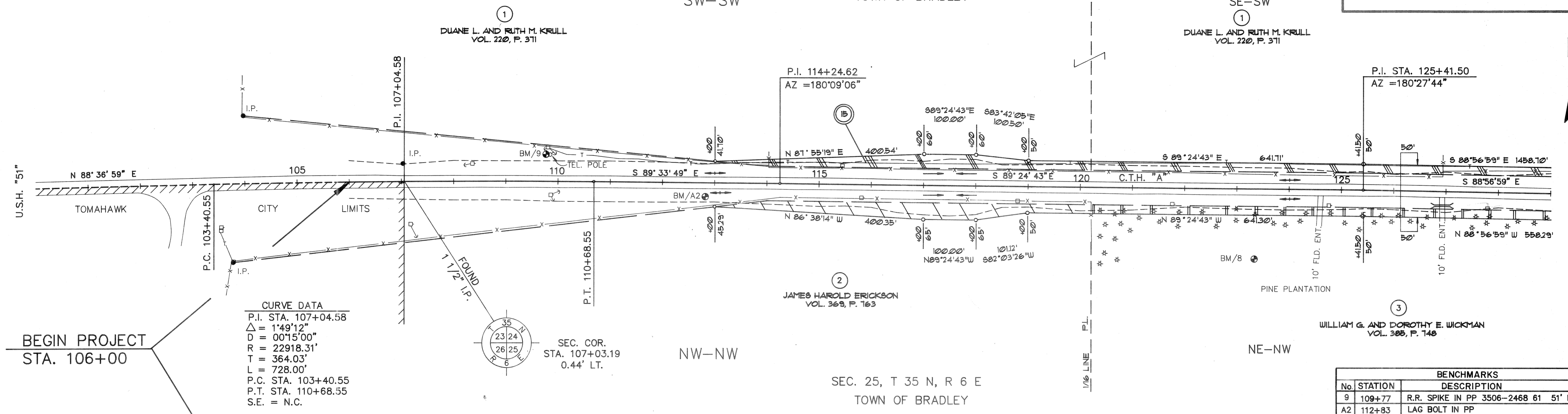


PLAN / PROFILE

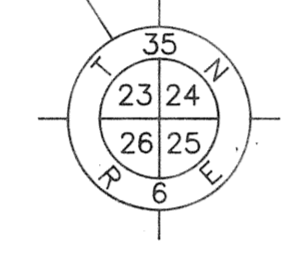
SEC. 24, T 35N, R 6 E  
TOWN OF BRADLEY

SEC. 25, T 35 N, R 6 E  
TOWN OF BRADLEY



**CURVE DATA**

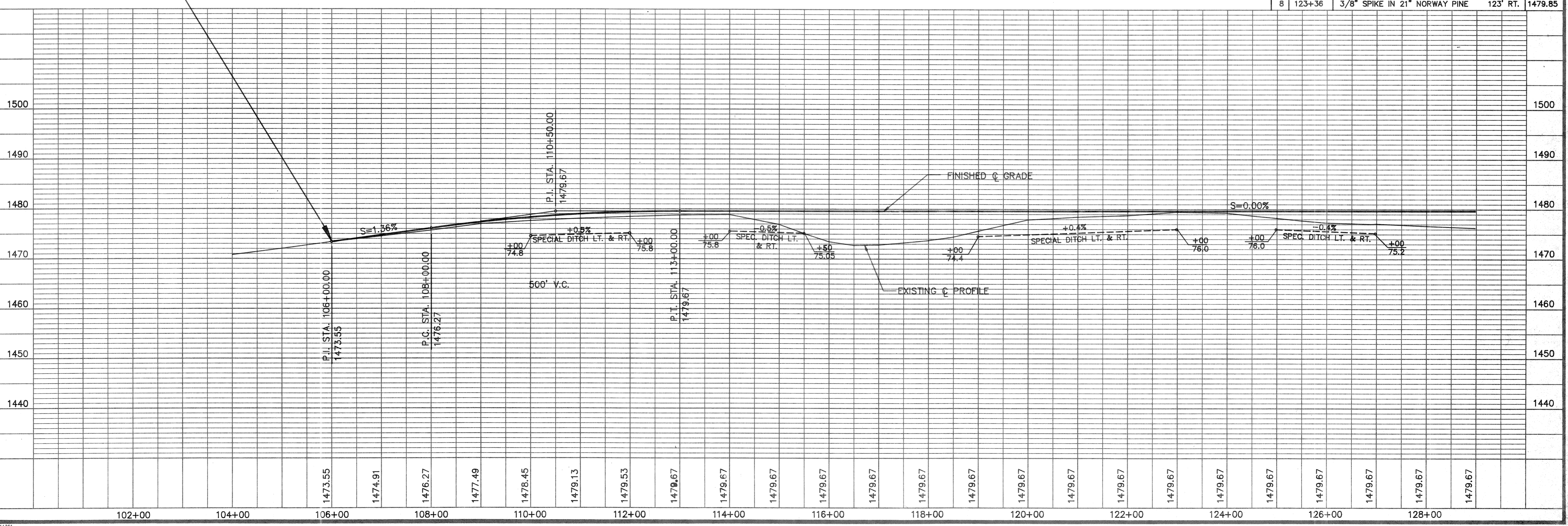
P.I. STA.	107+04.58
$\Delta$	1°49'12"
D	00°15'00"
R	22918.31'
T	364.03'
L	728.00'
P.C. STA.	103+40.55
P.T. STA.	110+68.55
S.E.	= N.C.



SEC. COR.  
STA. 107+03.19  
0.44' LT.

**BENCHMARKS**

No.	STATION	DESCRIPTION	ELEV.
9	109+77	R.R. SPIKE IN PP 3506-2468 61 51' LT.	1478.32
A2	112+83	LAG BOLT IN PP 25' RT.	1479.53
8	123+36	3/8" SPIKE IN 21" NORWAY PINE 123' RT.	1479.85

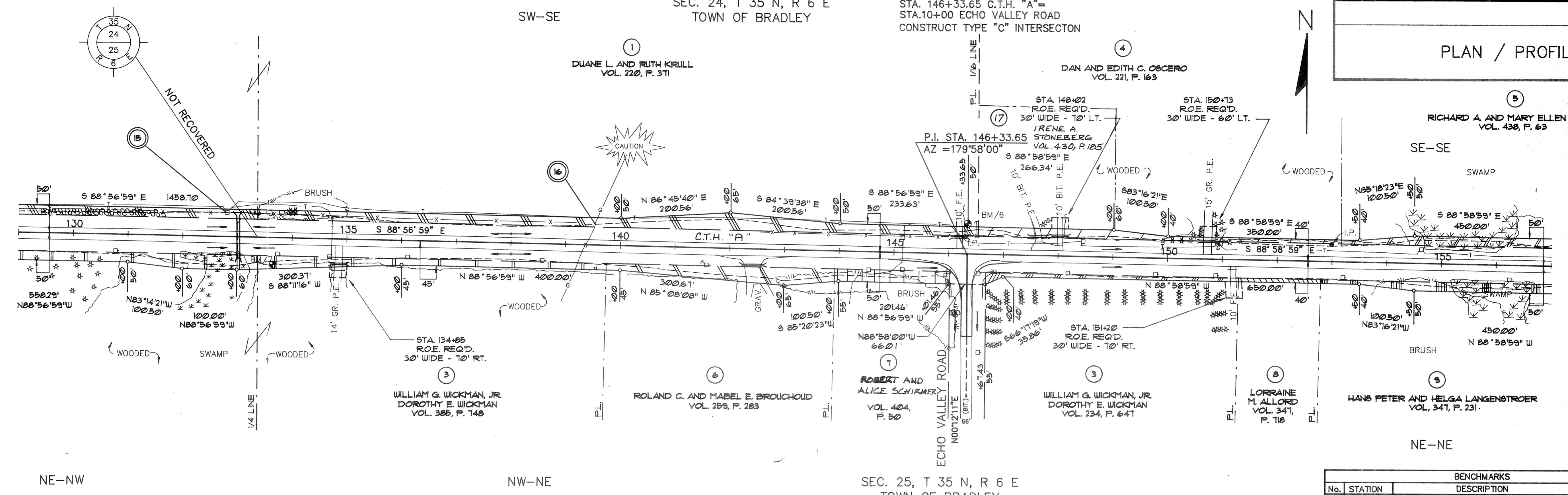


DRAWING NAME:  
LAYERS OFF:  
511381

PLAN / PROFILE

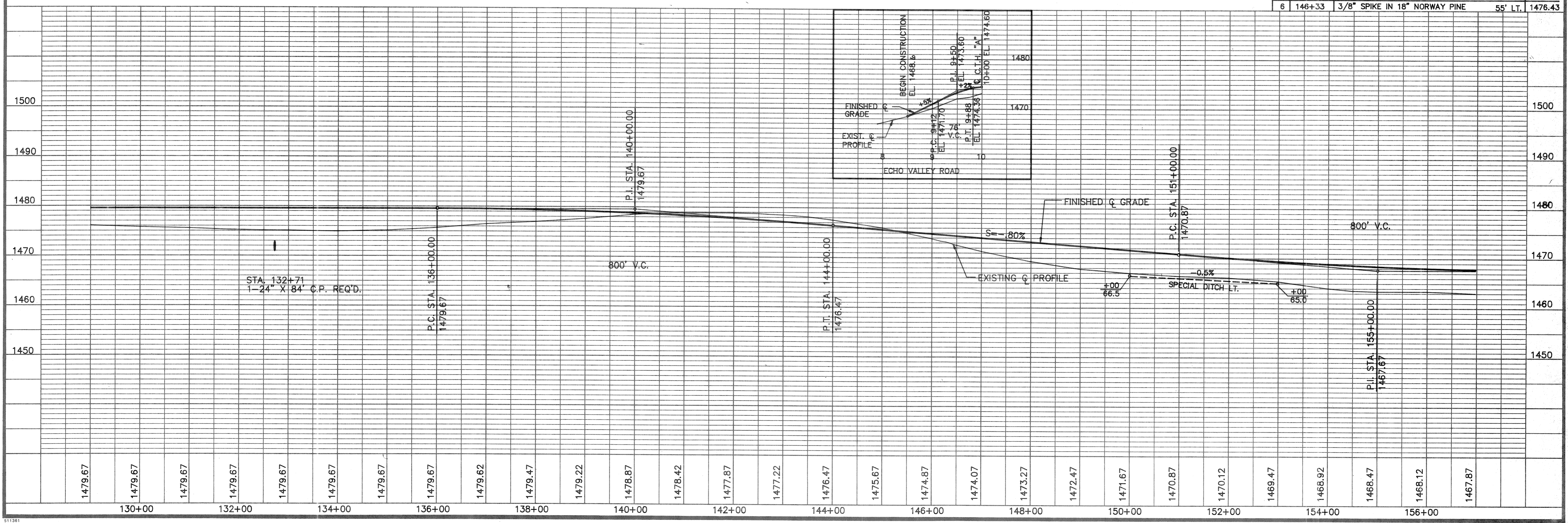
SEC. 24, T 35 N, R 6 E  
TOWN OF BRADLEY

STA. 146+33.65 C.T.H. "A"  
STA. 10+00 ECHO VALLEY ROAD  
CONSTRUCT TYPE "C" INTERSECTION



SEC. 25, T 35 N, R 6 E  
TOWN OF BRADLEY

BENCHMARKS			
No.	STATION	DESCRIPTION	ELEV.
7	133+66	3/8" SPIKE IN TRIPLE 12" OAK	49' RT. 1473.93
6	146+33	3/8" SPIKE IN 18" NORWAY PINE	55' LT. 1476.43

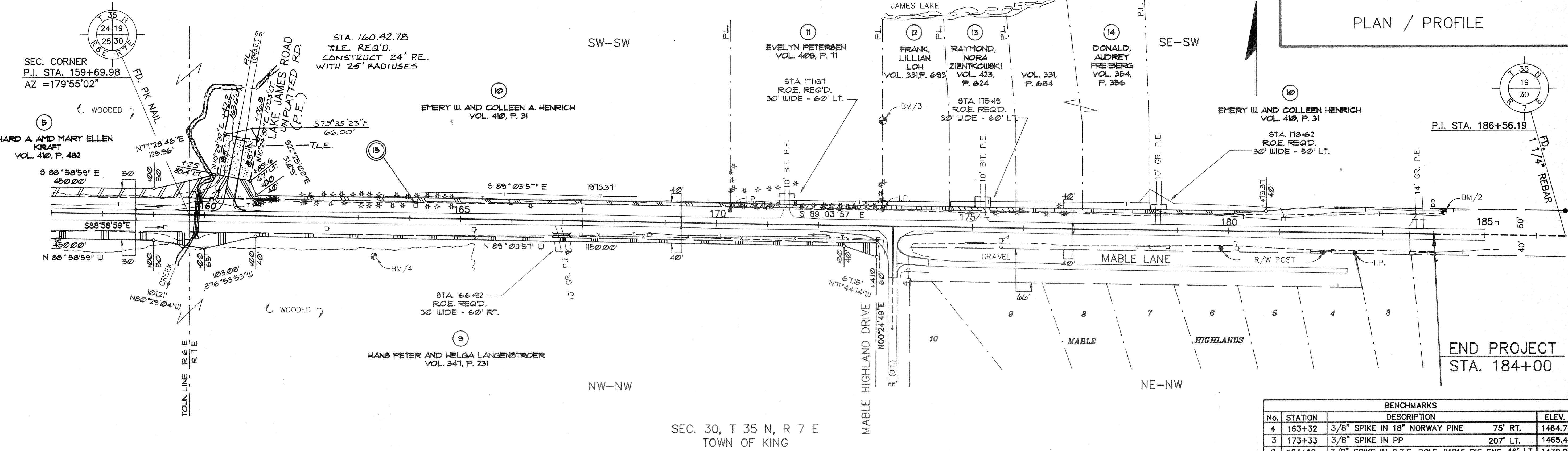


DRAWING NAME:  
LAYERS OFF:  
511381

PLAN / PROFILE

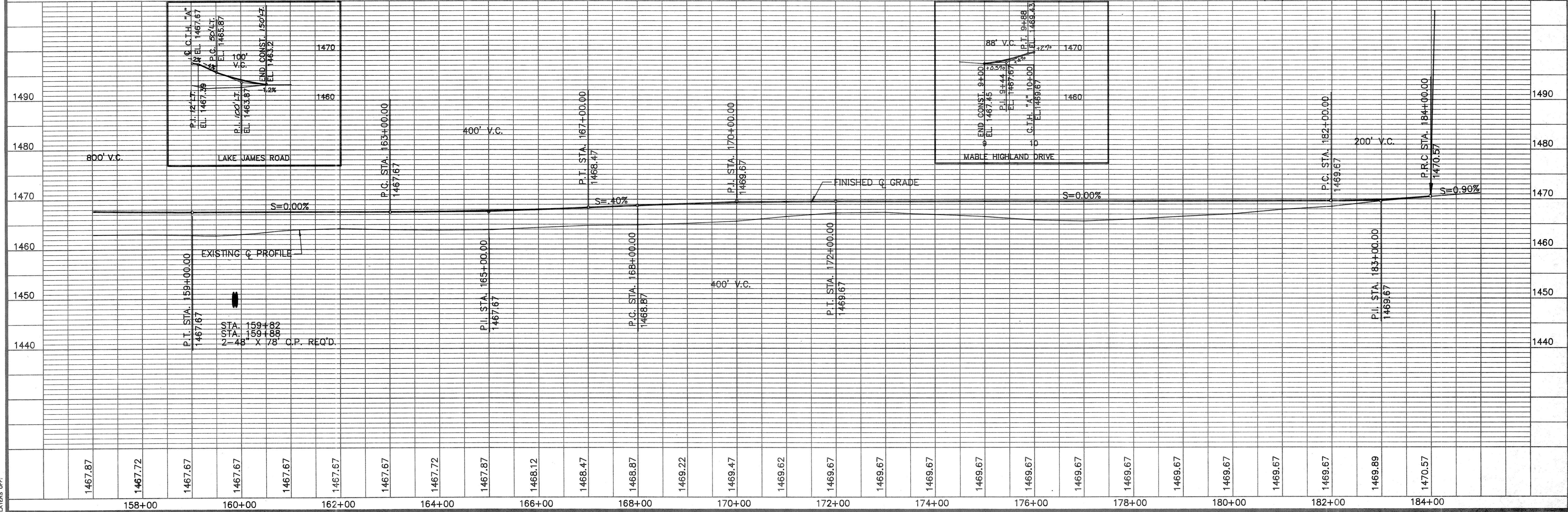
SEC. 19, T 35 N, R 7 E  
TOWN OF KING

STA. 173+44.96 C.T.H. "A"  
STA. 10+00 MABLE HIGHLAND DRIVE  
CONSTRUCT TYPE "C" INTERSECTION



SEC. 30, T 35 N, R 7 E  
TOWN OF KING

BENCHMARKS				
No.	STATION	DESCRIPTION		ELEV.
4	163+32	3/8" SPIKE IN 18" NORWAY PINE	75' RT.	1464.70
3	173+33	3/8" SPIKE IN PP	207' LT.	1465.41
2	184+19	3/8" SPIKE IN G.T.E. POLE #4815 RIS SNE	46' LT.	1470.99



DRAWING NAME: LAYERS OFF: 511361