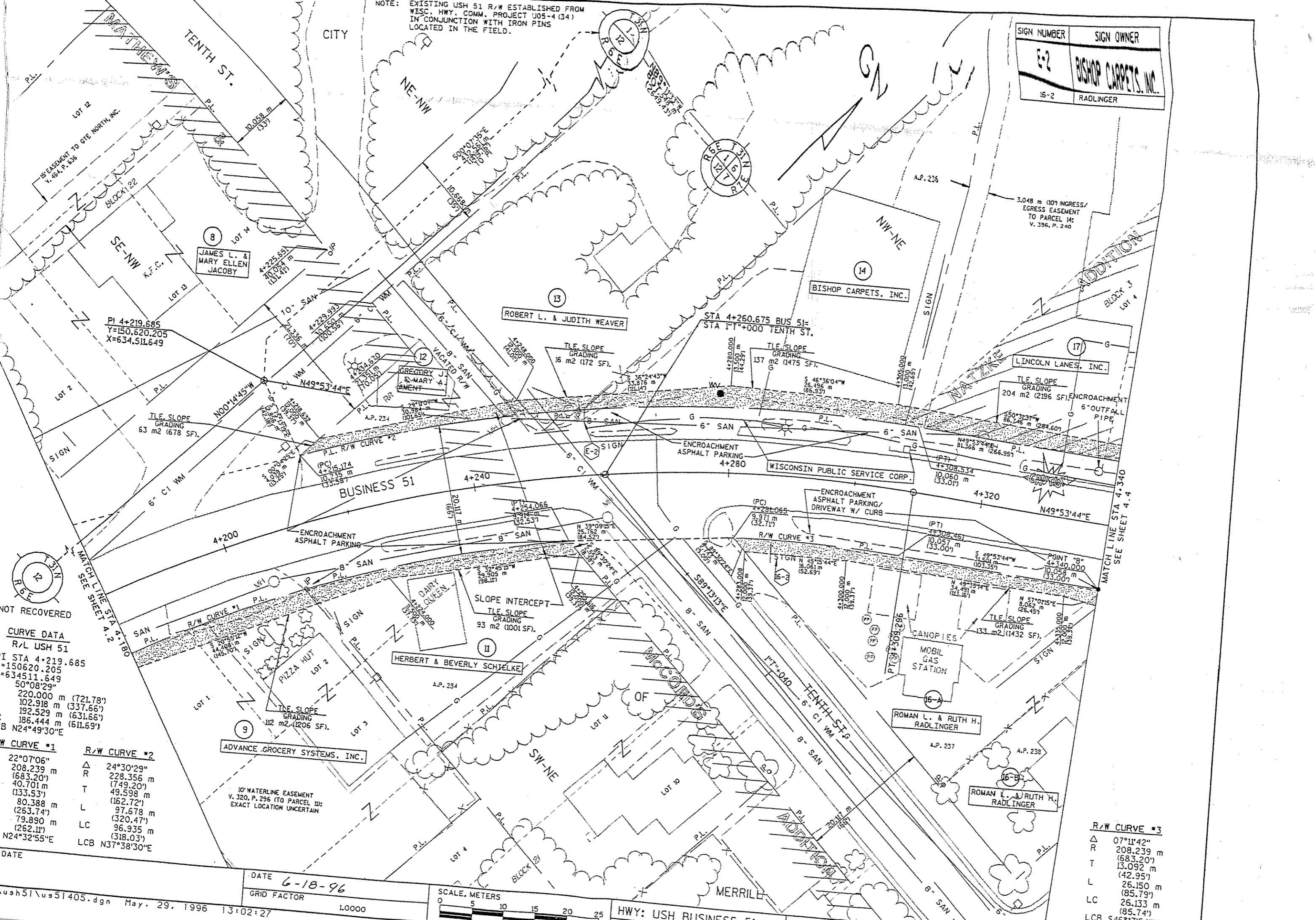


NOTE: EXISTING USH 51 R/W ESTABLISHED FROM WISC. HWY. COMM. PROJECT U05-4 (34) IN CONJUNCTION WITH IRON PINS LOCATED IN THE FIELD.

SIGN NUMBER	SIGN OWNER
E-2	BISHOP CARPETS, INC.
16-2	RADLINGER



NOT RECOVERED

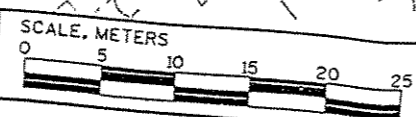
**CURVE DATA**  
 R/L USH 51  
 PI STA 4+219.685  
 Y=150620.205  
 X=634511.649  
 Δ 50°08'29"  
 R 220.000 m (721.78')  
 T 102.918 m (337.66')  
 L 192.529 m (631.66')  
 LC 186.444 m (611.69')  
 LCB N24°49'30"E

R/W CURVE #1	R/W CURVE #2
Δ 22°07'06"	Δ 24°30'29"
R 208.239 m (683.20')	R 228.356 m (749.20')
T 40.701 m (133.53')	T 49.598 m (162.72')
L 80.388 m (263.74')	L 97.678 m (320.47')
LC 79.890 m (262.11')	LC 96.935 m (318.03')
LCB N24°32'55"E	LCB N37°38'30"E

**R/W CURVE #3**

Δ 07°11'42"
R 208.239 m (683.20')
T 13.092 m (42.95')
L 26.150 m (85.79')
LC 26.133 m (85.74')
LCB S46°17'54"W

DATE 6-18-96  
 GRID FACTOR 1.0000



HWY: USH BUSINESS 51  
 COUNTY: LINCOLN

FEDERAL PROJECT NO:  
 STATE R/W PROJECT NO: 9675-07-21

SHEET NO: