

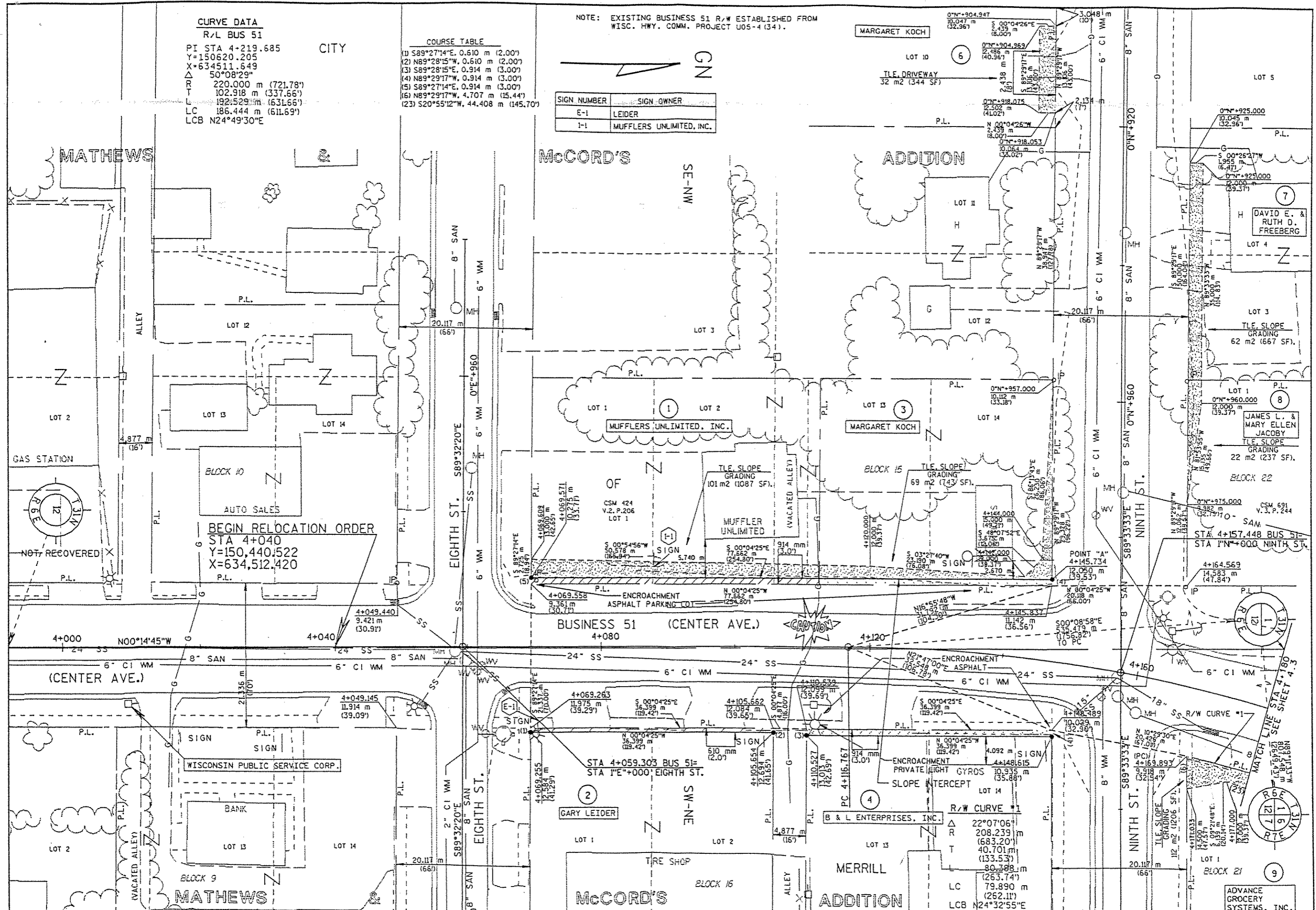
**CURVE DATA**  
 R/L BUS 51  
 PI STA 4+219.685  
 Y=150620.205  
 X=634511.649  
 $\Delta$  50°08'29"  
 R 220.000 m (721.78')  
 T 102.918 m (337.66')  
 L 192.529 m (631.66')  
 LC 186.444 m (611.69')  
 LCB N24°49'30"E

**COURSE TABLE**

(1)	S89°27'14"E	0.610 m (2.00')
(2)	N89°28'15"W	0.610 m (2.00')
(3)	S89°28'15"W	0.914 m (3.00')
(4)	N89°29'17"W	0.914 m (3.00')
(5)	S89°27'14"E	0.914 m (3.00')
(6)	N89°29'17"W	4.707 m (15.44')
(23)	S20°55'12"W	44.408 m (145.70')

NOTE: EXISTING BUSINESS 51 R/W ESTABLISHED FROM WISC. HWY. COMM. PROJECT U05-4(134).

SIGN NUMBER	SIGN OWNER
E-1	LEIDER
I-1	MUFFLERS UNLIMITED, INC.



REVISION DATE	DATE <b>6-18-96</b>	SCALE, METERS 0 5 10 15 20 25	HWY: USH BUSINESS 51	FEDERAL PROJECT NO:
	GRID FACTOR 10000		COUNTY: LINCOLN	STATE R/W PROJECT NO: 9675-07-21
				SHEET NO: 42 M