

CURVE DATA
 R/L BUS 51
 PI STA 4+219.685
 Y=150620.205
 X=634511.649
 Δ 50°08'29"
 R 220.000 m (721.78')
 T 102.918 m (337.66')
 L 192.529 m (631.66')
 LC 186.444 m (611.69')
 LCB N24°49'30"E

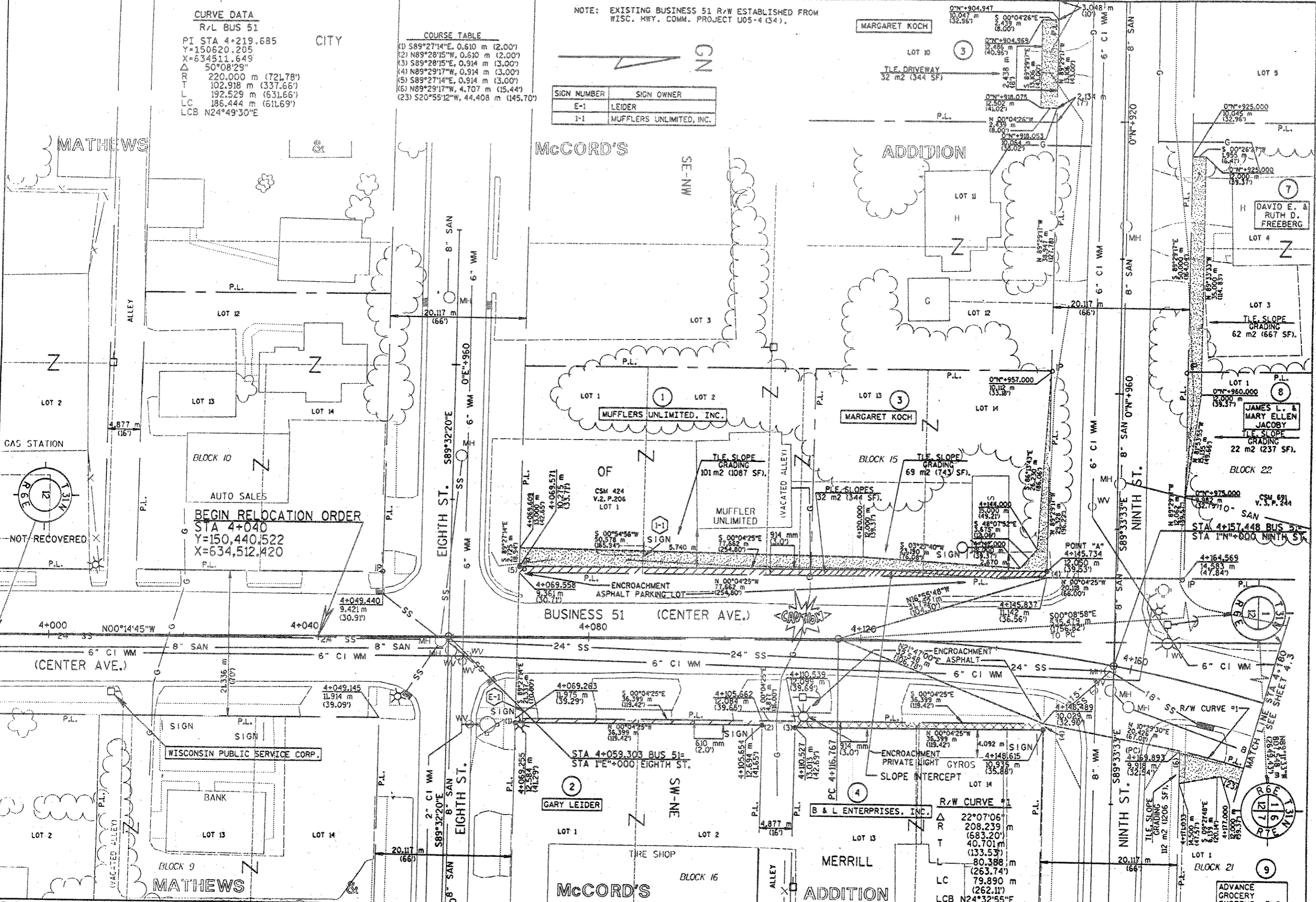
COURSE TABLE

| | |
|-----|---------------------------------|
| (1) | S89°27'14"E, 0.610 m (2.00') |
| (2) | N89°28'15"W, 0.610 m (2.00') |
| (3) | S89°28'15"E, 0.914 m (3.00') |
| (4) | N89°29'17"W, 0.914 m (3.00') |
| (5) | S89°27'14"E, 0.914 m (3.00') |
| (6) | N89°29'17"W, 4.707 m (15.44') |
| (2) | S20°55'12"W, 44.408 m (145.70') |

NOTE: EXISTING BUSINESS 51 R/W ESTABLISHED FROM WISC. HWY. COMM. PROJECT U05-4 (34).

| SIGN NUMBER | SIGN OWNER |
|-------------|--------------------------|
| E-1 | LEIDER |
| I-1 | MUFFLERS UNLIMITED, INC. |

REV. DATE: 2-18-97
 PLOT SCALE: 1"=20.00'
 ORIGINAL: 1, 2, 3, 4, 5, 6, 7, 8, 9, 10, 11, 12, 13, 14, 15, 16, 17, 18, 19, 20, 21, 22, 23, 24, 25, 26, 27, 28, 29, 30, 31, 32, 33, 34, 35, 36, 37, 38, 39, 40, 41, 42, 43, 44, 45, 46, 47, 48, 49, 50, 51, 52, 53, 54, 55, 56, 57, 58, 59, 60, 61, 62, 63
 DATE: 6-18-96
 SCALE, METERS: 0 5 10 15 20 25
 HWY: USH BUSINESS 51
 COUNTY: LINCOLN
 PROJECT NO: 9675-07-70
 STATE R/W PROJECT NO: 9675-07-21
 SHEET NO: 4.2
 SHEET NO: 4.2
 M



| | | | | | |
|------------------------|---------------|--------------------------------|----------------------|----------------------------------|---------------|
| REVISION DATE: 2-18-97 | DATE: 6-18-96 | SCALE, METERS: 0 5 10 15 20 25 | HWY: USH BUSINESS 51 | PROJECT NO: 9675-07-70 | SHEET NO: 4.2 |
| GRID FACTOR: 1.0000 | | | COUNTY: LINCOLN | STATE R/W PROJECT NO: 9675-07-21 | SHEET NO: 4.2 |
| | | | | | M |