

CHAIN LEP1

CURVE CUR5  
 PC 5 N 151026.762 E 634900.966  
 CC 5 N 151038.783 E 634903.324  
 PI 5 N 151028.499 E 634892.114  
 PT 5 N 151037.468 E 634891.145  
 CURVE CUR5  
 TAN 9.021 m  
 DB N 78°54'08.2" W  
 DA N 6°09'49.8" W  
 LChord Distance 14.528 m  
 External Distance 2.963  
 Radius 12.250 m  
 DEG 142°33'40.5"  
 DELTA 72°44'18.4"  
 LENGTH 15.552 m

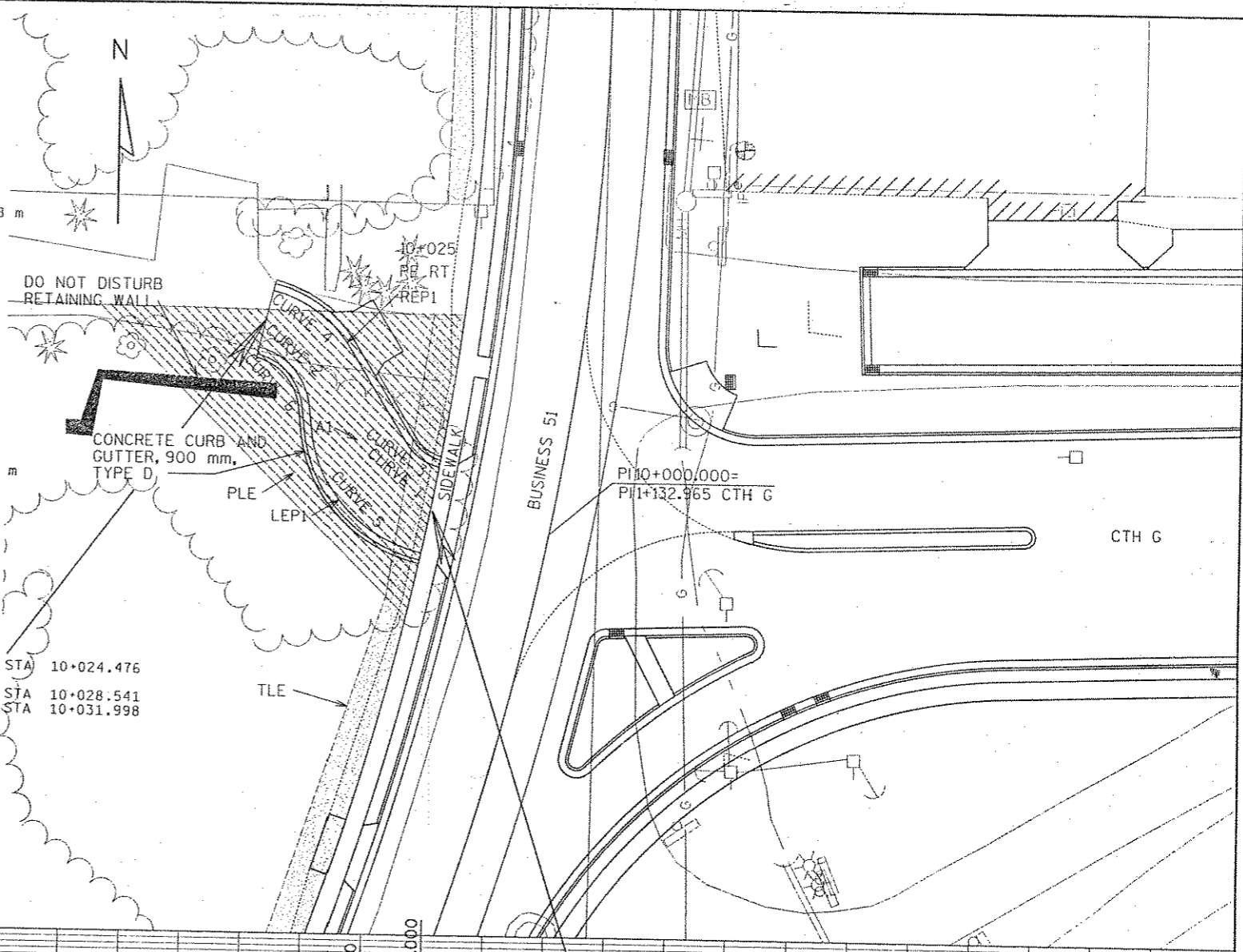
CURVE CUR6  
 PC 6 N 151039.442 E 634890.932  
 CC 6 N 151038.905 E 634885.961  
 PI 6 N 151042.933 E 634890.555  
 PT 6 N 151043.763 E 634887.143  
 CURVE CUR6  
 TAN 3.512 m  
 DB N 6°09'49.8" W  
 DA N 76°19'33.8" W  
 LChord Distance 5.747 m  
 External Distance 1.110  
 Radius 5.000 m  
 DEG 349°16'30.3"  
 DELTA -70°09'44.1"  
 LENGTH 6.123 m

CHAIN A1  
 CURVE CUR1  
 PC1 N 151030.933 E 634901.784 STA 10+009.850  
 CC1 N 151038.783 E 634903.324  
 PI 1 N 151031.759 E 634897.571 STA 10+014.143  
 PT 1 N 151035.727 E 634895.931 STA 10+017.731  
 CURVE CUR1  
 TAN 4.293 m  
 DB N 78°54'08.2" W  
 DA N 22°27'34.6" W  
 LChord Distance 7.566 m  
 External Distance 1.079  
 Radius 8.000 m  
 DEG 218°17'48.9"  
 DELTA 56°26'33.6"  
 LENGTH 7.881 m

CHAIN REP1  
 CURVE CUR3  
 PC 3 N 151035.103 E 634902.602  
 CC 3 N 151038.783 E 634903.324  
 PI 3 N 151035.421 E 634900.985  
 PT 3 N 151036.827 E 634900.125  
 CURVE CUR3  
 TAN 1.648 m  
 DB N 78°54'08.2" W  
 DA N 31°26'44.4" W  
 LChord Distance 3.018 m  
 External Distance 0.346  
 Radius 3.750 m  
 DEG 465°42'00.3"  
 DELTA 47°27'23.7"  
 LENGTH 3.106 m

CURVE CUR4  
 PC 4 N 151044.643 E 634895.345  
 CC 4 N 151038.905 E 634885.961  
 PI 4 N 151048.519 E 634892.975  
 PT 4 N 151049.593 E 634888.561  
 CURVE CUR4  
 TAN 4.543 m  
 DB N 31°26'44.4" W  
 DA N 76°19'33.8" W  
 LChord Distance 8.398 m  
 External Distance 0.901  
 Radius 11.000 m  
 DEG 158°45'41.0"  
 DELTA -44°52'49.4"  
 LENGTH 8.616 m

CURVE CUR2  
 PC 2 N 151041.961 E 634893.354 STA 10+024.476  
 CC 2 N 151038.905 E 634885.961  
 PI 2 N 151045.717 E 634891.801 STA 10+028.541  
 PT 2 N 151046.678 E 634887.852 STA 10+031.998  
 CURVE CUR2  
 TAN 4.064 m  
 DB N 22°27'34.6" W  
 DA N 76°19'33.8" W  
 LChord Distance 7.247 m  
 External Distance 0.973  
 Radius 8.000 m  
 DEG 218°17'48.9"  
 DELTA -53°51'59.2"  
 LENGTH 7.521 m



395																					395
394																					394
393																					393
392																					392
391																					391
390																					390
389																					389
388																					388
387																					387

END CONSTRUCTION  
 STA 10+031.998  
 EL 390.361  
 (MATCH EXISTING)

BEGIN CONSTRUCTION  
 STA 10+009.850  
 EL 392.607  
 (MATCH BACK EDGE OF S/W)

