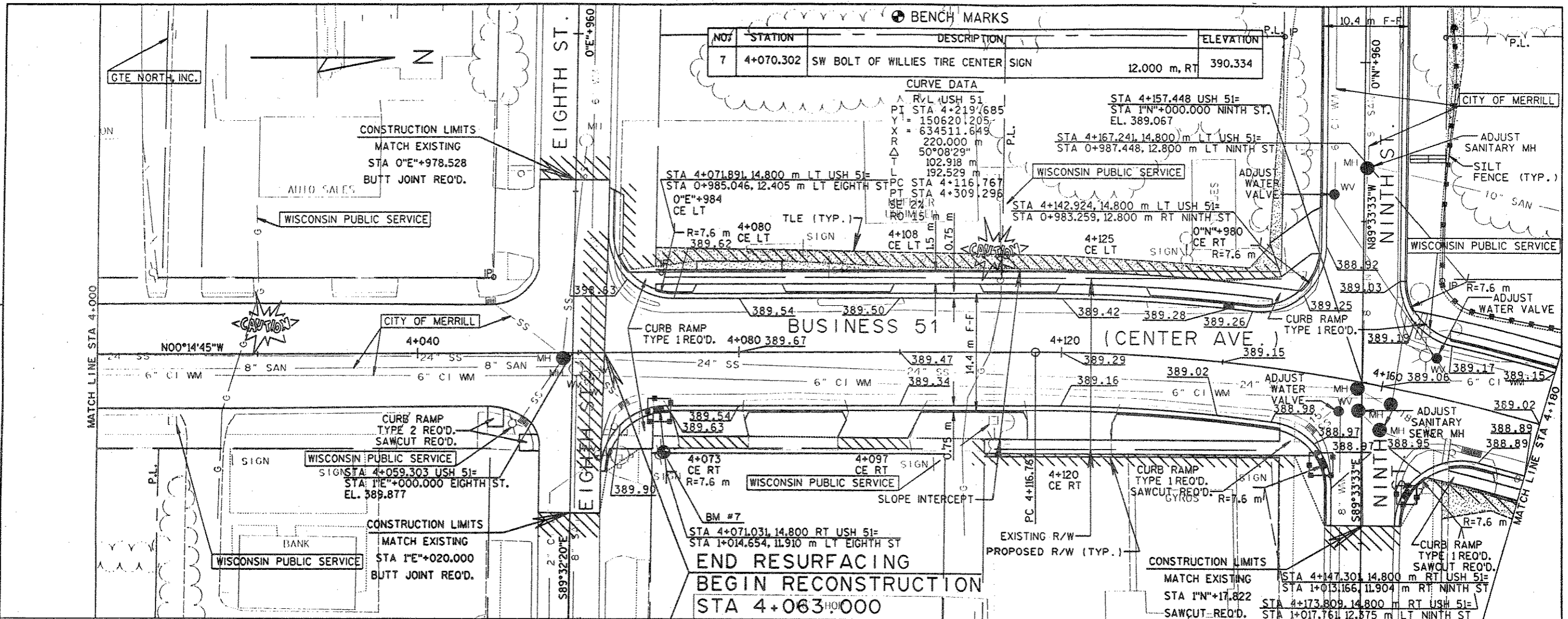


LEVELS ON - 1, 2, 3, 4, 5, 6, 7, 8, 9, 10, 11, 12, 13, 14, 15, 16, 17, 18, 19, 20, 21, 22, 23, 24, 25, 26, 27, 28, 29, 30, 31, 32, 33, 34, 35, 36, 37, 38, 39, 40, 41, 42, 43, 44, 45, 46, 47, 48, 49, 50, 51, 52, 53, 54, 55, 56, 57, 58, 59, 60, 61, 62, 63



NO.	STATION	DESCRIPTION	ELEVATION
7	4+070.302	SW BOLT OF WILLIES TIRE CENTER SIGN	12.000 m, RT 390.334

**CURVE DATA**

R/L USH 51	PI STA 4+219.685	STA 4+157.448 USH 51=	STA 1+N+000.000 NINTH ST. EL. 389.067
Y = 150620.205	X = 634511.649	STA 4+167.241, 14.800 m LT USH 51=	STA 0+987.448, 12.800 m LT NINTH ST
R = 220.000 m	Δ = 50°08'29"	STA 4+142.924, 14.800 m LT USH 51=	STA 0+983.259, 12.800 m RT NINTH ST
L = 102.918 m	T = 192.529 m	PC STA 4+116.767	PT STA 4+309.296
ME = 12.7 m	RO = 15.1 m	CE LT	CE RT

**END RESURFACING  
BEGIN RECONSTRUCTION  
STA 4+063+000**

**RESURFACING**

**RECONSTRUCTION**

Station	SE LT	SE RT	Remarks
4081.760	NC	NC	Normal Crown
4096.760	0.00	-2.00	0% Super
4111.760	2.00	-2.00	Reverse Crown, Full Super
4314.310	2.00	-2.00	Reverse Crown, Full Super
4329.310	0.00	-2.00	0% Super
4344.310	NC	NC	Normal Crown

