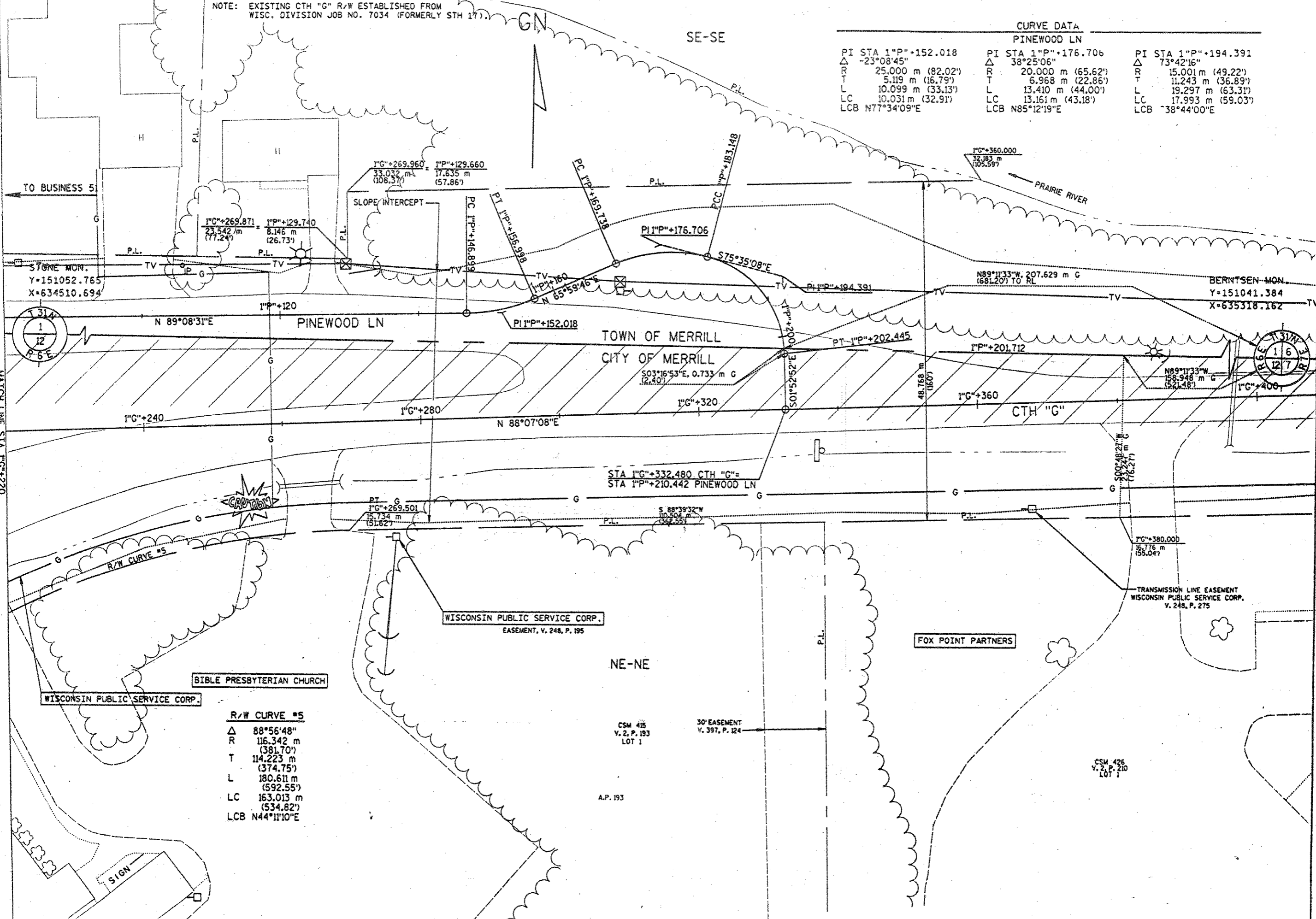


NOTE: EXISTING CTH "G" R/W ESTABLISHED FROM WISC. DIVISION JOB NO. 7034 (FORMERLY STH 17).

CURVE DATA		
PINWOOD LN		
PI STA 1"P"+152.018	PI STA 1"P"+176.706	PI STA 1"P"+194.391
Δ -23°08'45"	Δ 38°25'06"	Δ 73°42'16"
R 25,000 m (82.02')	R 20,000 m (65.62')	R 15,001 m (49.22')
T 5.119 m (16.79')	T 6.968 m (22.86')	T 11.243 m (36.89')
L 10.099 m (33.13')	L 13.410 m (44.00')	L 19.297 m (63.31')
LC 10.031 m (32.91')	LC 13.161 m (43.18')	LC 17.993 m (59.03')
LCB N77°34'09"E	LCB N85°12'19"E	LCB 38°44'00"E

REV. DATE: 2-18-97 N.C.
 PLOT SCALE: 1"=100'
 PLOT NAME:
 MATCH LINE STA 1"G"+220
 SEE SHEET 4.6
 REV. DATE: 2-18-97 N.C.
 PLOT SCALE: 1"=100'
 PLOT NAME:
 MATCH LINE STA 1"G"+220
 SEE SHEET 4.6
 REV. DATE: 2-18-97 N.C.
 PLOT SCALE: 1"=100'
 PLOT NAME:
 MATCH LINE STA 1"G"+220
 SEE SHEET 4.6



R/W CURVE #5

Δ	88°56'48"
R	116.342 m (381.70')
T	114.223 m (374.75')
L	180.611 m (592.55')
LC	163.013 m (534.82')
LCB	N44°11'10"E

REVISION DATE 2-18-97 N.C.	DATE 6-18-96	SCALE, METERS 0 5 10 15 20 25	HWY: USH BUSINESS 51	PROJECT NO: 9675-07-70	SHEET NO: 4.8
GRID FACTOR 1.0000			COUNTY: LINCOLN	STATE R/W PROJECT NO: 9675-07-21	SHEET NO: 4.8

FILE NAME:

WISDOT: MSHT70