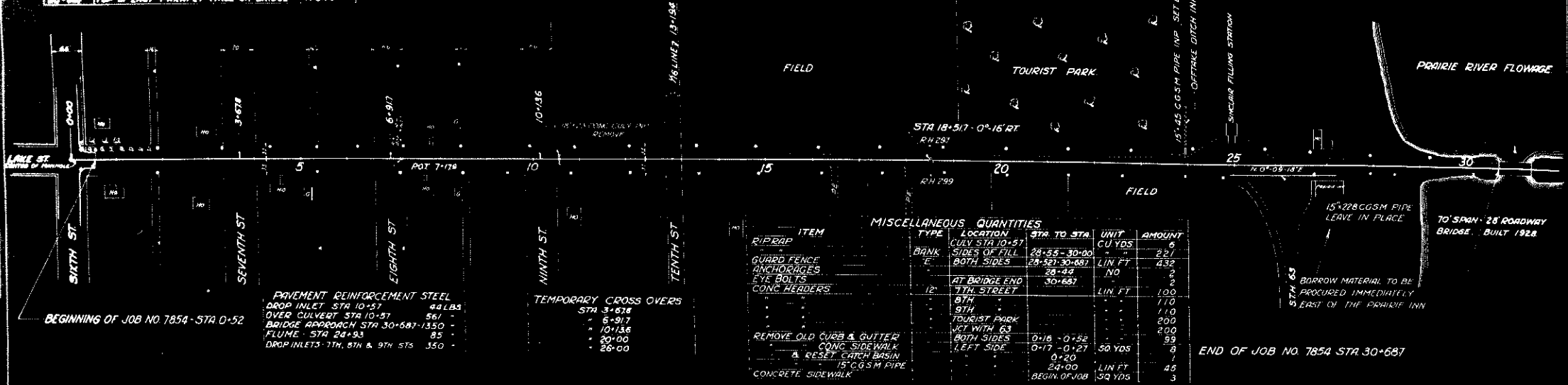


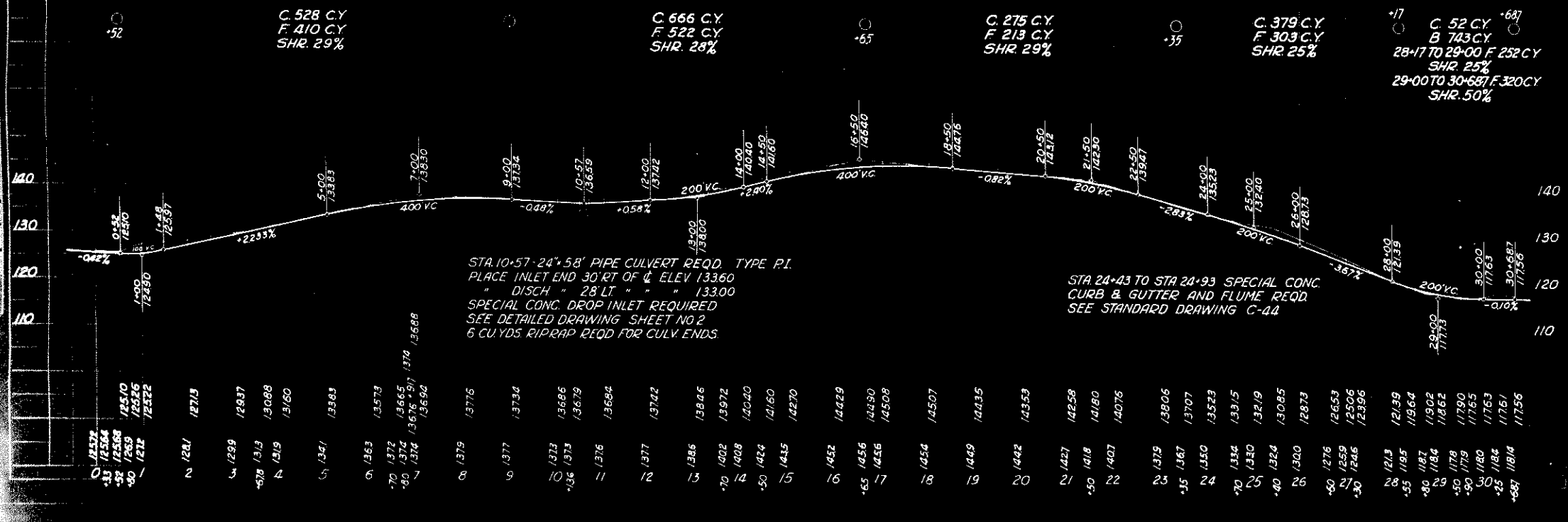
BENCH MARKS		
STATION	DESCRIPTION	ELEVATION
6+55	INSIDE CORNER ON TOP OF CONCRETE SIDEWALK - 33' LEFT	126.90
7+20	N.W. COR. OF CONC. WALK - 31' RIGHT	140.18
11+70	SPRIG IN 1" WHITE PINE - 50' LEFT	144.19
16+30	W. LINE OF CONC. SIDEWALK	134.35
18+10	TOP OF EXIST. PARAPET WALL ON BRIDGE	118.76

DATE: 3/11
 DIVISION: 7854



MISCELLANEOUS QUANTITIES					
ITEM	TYPE	LOCATION	STA. TO STA.	UNIT	AMOUNT
RIPRAP	BANK	CULV STA 10+57		CU YDS	6
GUARD FENCE	E	SIDES OF FILL	28+55 - 30+00	22'	22'
ANCHORAGES	E	BOTH SIDES	28+57 - 30+687	LIN FT	432
EYE BOLTS		AT BRIDGE END	30+687	NO	3
CONC HEADERS		AT BRIDGE END	7TH STREET	LIN FT	100
		8TH			110
		9TH			110
		TOURIST PARK			200
		LET WITH 63			200
REMOVE OLD CURB & GUTTER		BOTH SIDES	0+16 - 0+52	50 YDS	99
CONC SIDEWALK		LEFT SIDE	0+17 - 0+27	50 YDS	99
& RESET CATCH BASIN			0+20		1
15" CGSM PIPE			24+00	LIN FT	45
CONCRETE SIDEWALK		BEGIN. OF JOB		50 YDS	3

NET LENGTH OF CENTER LINE 0+52 TO 30+687 = 30167 LIN. FT.



STA. 10+57 - 24" x 58" PIPE CULVERT REQD. TYPE P.I.
 PLACE INLET END 30' RT OF V. ELEV 133.60
 DISCH " 28" LT. " " " 133.00
 SPECIAL CONC. DROP INLET REQUIRED
 SEE DETAILED DRAWING SHEET NO 2
 6 CU YDS RIPRAP REQD FOR CULV ENDS

STA 24+43 TO STA 24+93 SPECIAL CONC.
 CURB & GUTTER AND FLUME REQD.
 SEE STANDARD DRAWING C-44