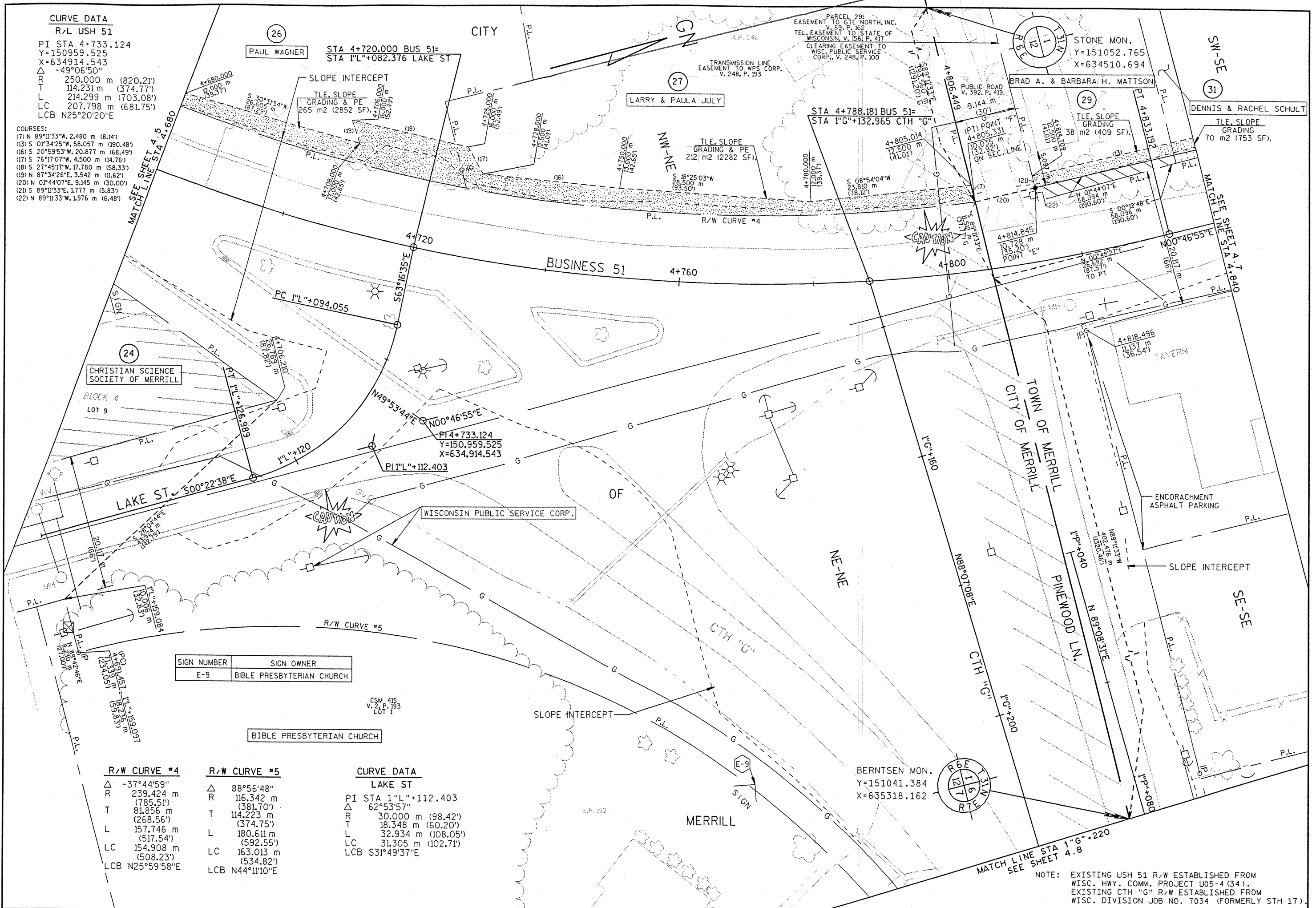


**CURVE DATA**  
R/L USH 51

PI STA 4+733.124  
Y=150959.525  
X=634914.543  
Δ -49°06'50"  
R 250.000 m (820.21')  
T 114.231 m (374.77')  
L 214.299 m (703.08')  
LC 207.798 m (681.75')  
LCB N25°20'20"E

**COURSES:**  
(7) N 89°11'33"W, 2.480 m (8.14')  
(13) S 01°34'25"W, 58.057 m (190.48')  
(16) S 20°59'53"W, 20.877 m (68.49')  
(17) S 76°17'07"W, 4.500 m (14.76')  
(18) S 27°45'17"W, 17.780 m (58.33')  
(19) N 87°34'26"E, 3.542 m (11.62')  
(20) N 01°44'07"E, 9.145 m (30.00')  
(21) S 89°11'33"E, 1.777 m (5.83')  
(22) N 89°11'33"W, 1.976 m (6.48')

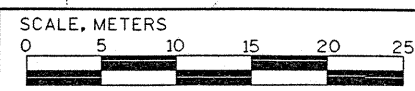


SIGN NUMBER	SIGN OWNER
E-9	BIBLE PRESBYTERIAN CHURCH

R/W CURVE #4		R/W CURVE #5	
Δ	-37°44'59"	Δ	88°56'48"
R	239.424 m (785.51')	R	116.342 m (381.70')
T	81.856 m (268.56')	T	114.223 m (374.75')
L	157.746 m (517.54')	L	180.611 m (592.55')
LC	154.908 m (508.23')	LC	163.013 m (534.82')
LCB	N25°59'58"E	LCB	N44°11'10"E

**CURVE DATA**  
LAKE ST

PI	STA 1"L"+112.403
Δ	62°53'57"
R	30.000 m (98.42')
T	18.348 m (60.20')
L	32.934 m (108.05')
LC	31.305 m (102.71')
LCB	S31°49'37"E



HWY: USH BUSINESS 51	FEDERAL PROJECT NO:
COUNTY: LINCOLN	STATE R/W PROJECT NO: 9675-07-21
	SHEET NO: 4.6

NOTE: EXISTING USH 51 R/W ESTABLISHED FROM WISC. HWY. COMM. PROJECT U05-4 (34). EXISTING CTH "G" R/W ESTABLISHED FROM WISC. DIVISION JOB NO. 7034 (FORMERLY STH 17).