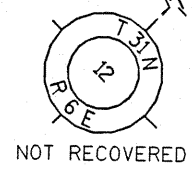
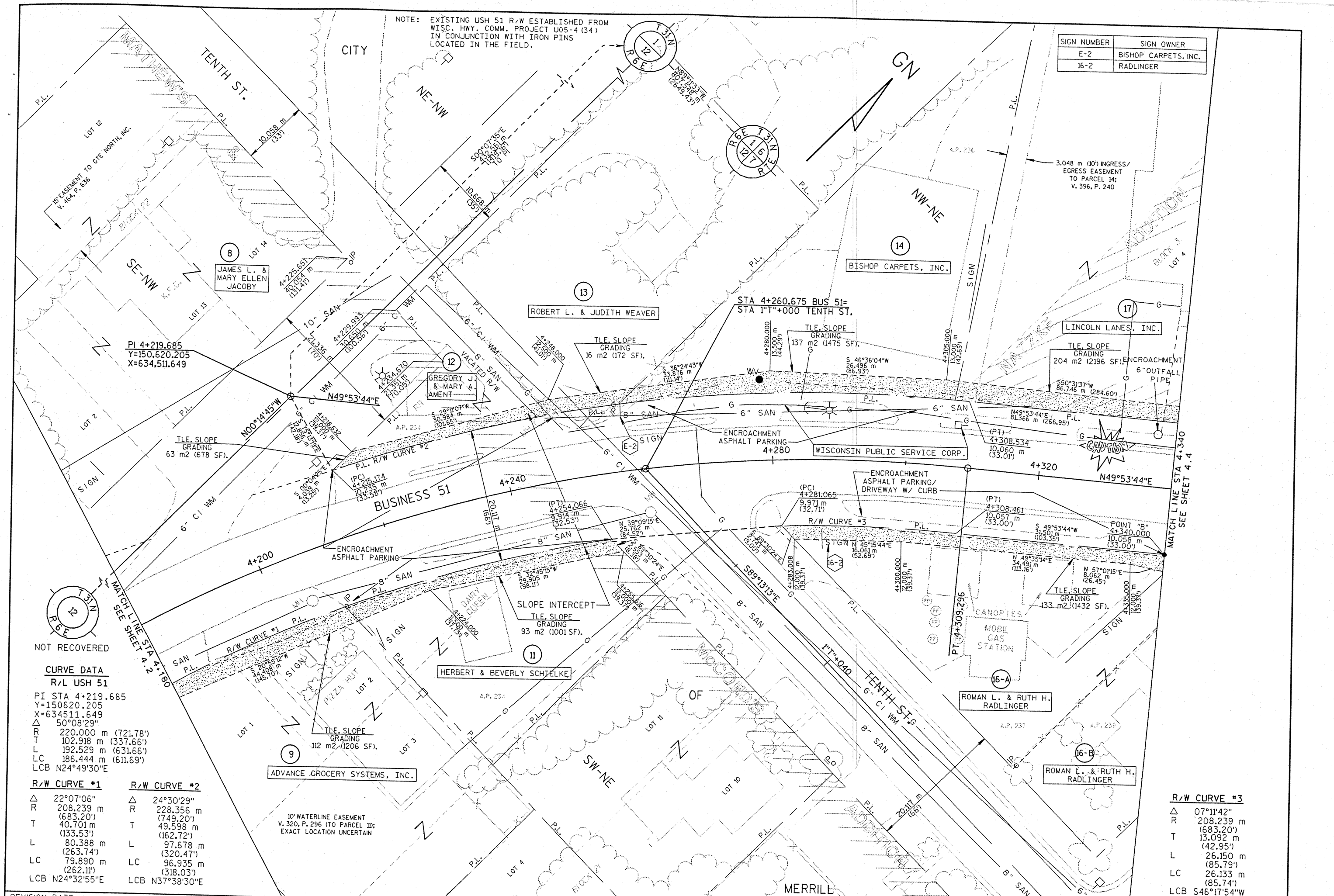


NOTE: EXISTING USH 51 R/W ESTABLISHED FROM WISC. HWY. COMM. PROJECT U05-4 (34) IN CONJUNCTION WITH IRON PINS LOCATED IN THE FIELD.

SIGN NUMBER	SIGN OWNER
E-2	BISHOP CARPETS, INC.
16-2	RADLINGER



NOT RECOVERED

CURVE DATA
R/L USH 51

PI STA 4+219.685
Y=150620.205
X=634511.649
Δ 50°08'29"
R 220.000 m (721.78')
T 102.918 m (337.66')
L 192.529 m (631.66')
LC 186.444 m (611.69')
LCB N24°49'30"E

R/W CURVE #1

Δ 22°07'06"
R 208.239 m (683.20')
T 40.701 m (133.53')
L 80.388 m (263.74')
LC 79.890 m (262.11')
LCB N24°32'55"E

R/W CURVE #2

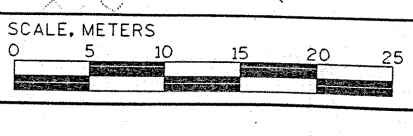
Δ 24°30'29"
R 228.356 m (749.20')
T 49.598 m (162.72')
L 97.678 m (320.47')
LC 96.935 m (318.03')
LCB N37°38'30"E

R/W CURVE #3

Δ 07°11'42"
R 208.239 m (683.20')
T 13.092 m (42.95')
L 26.150 m (85.79')
LC 26.133 m (85.74')
LCB S46°17'54"W

REVISION DATE	DATE

GRID FACTOR	SCALE, METERS
1.0000	0 5 10 15 20 25



HWY: USH BUSINESS 51	FEDERAL PROJECT NO:
COUNTY: LINCOLN	STATE R/W PROJECT NO: 9675-07-21
	SHEET NO: 4.3