

CURVE DATA
R/L BUS 51

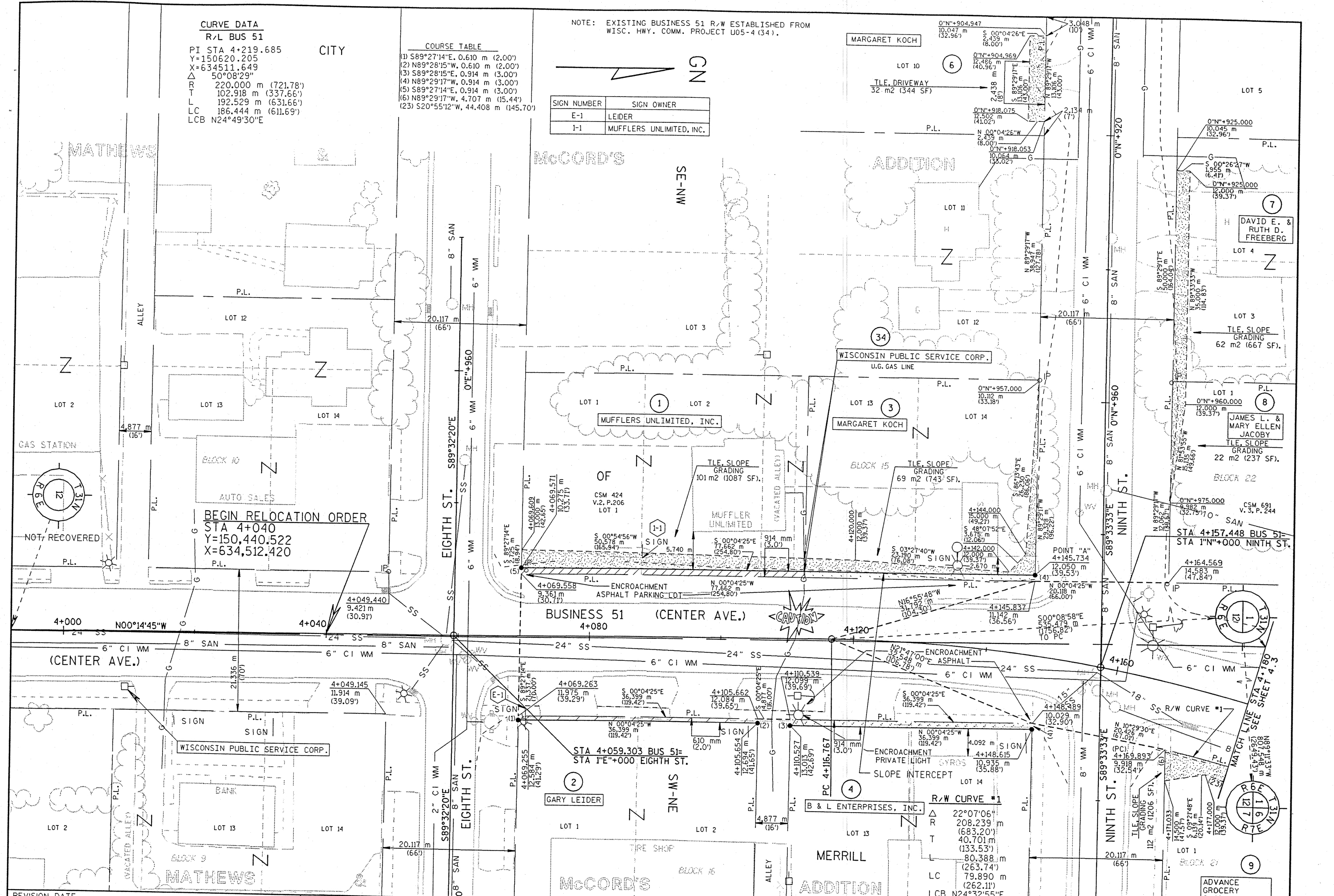
PI STA 4+219.685
Y=150620.205
X=634511.649
Δ 50°08'29"
R 220.000 m (721.78')
T 102.918 m (337.66')
L 192.529 m (631.66')
LC 186.444 m (611.69')
LCB N24°49'30"E

COURSE TABLE

- (1) S89°27'14"E, 0.610 m (2.00')
- (2) N89°28'15"W, 0.610 m (2.00')
- (3) S89°28'15"E, 0.914 m (3.00')
- (4) N89°29'17"W, 0.914 m (3.00')
- (5) S89°27'14"E, 0.914 m (3.00')
- (6) N89°29'17"W, 4.707 m (15.44')
- (23) S20°55'12"W, 44.408 m (145.70')

NOTE: EXISTING BUSINESS 51 R/W ESTABLISHED FROM WISC. HWY. COMM. PROJECT U05-4 (34).

SIGN NUMBER	SIGN OWNER
E-1	LEIDER
I-1	MUFFLERS UNLIMITED, INC.



REVISION DATE	DATE	SCALE, METERS	HWY: USH BUSINESS 51	FEDERAL PROJECT NO:
	GRID FACTOR	0 5 10 15 20 25	COUNTY: LINCOLN	STATE R/W PROJECT NO: 9675-07-21
	1.0000			SHEET NO: 4.2