

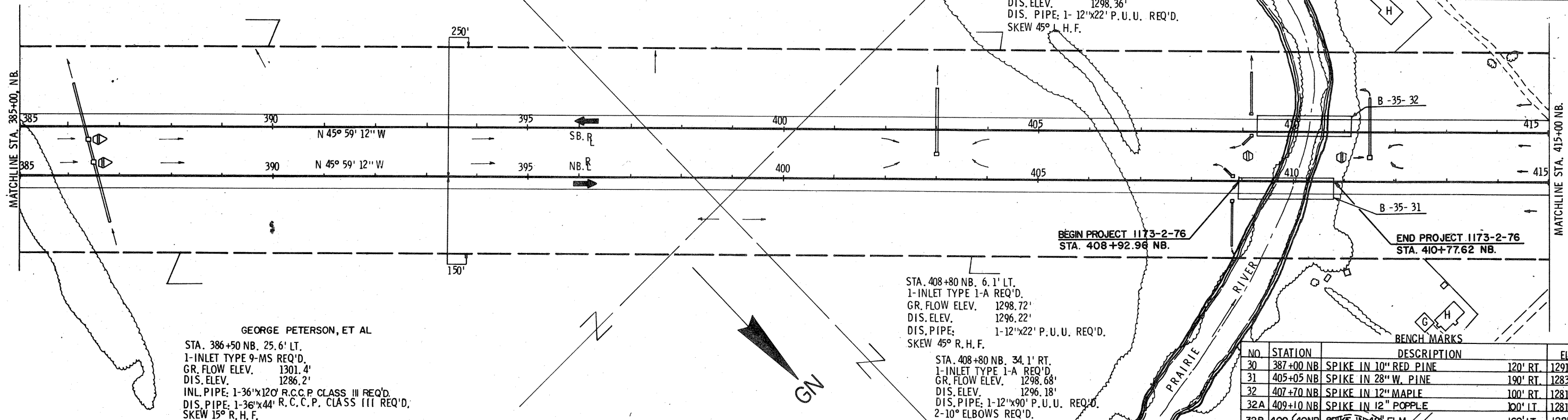
STA. 386+38 SB. 25.6 RT.
 1-INLET TYPE 9-MS REQ'D.
 GR. FLOW ELEV. 1301.8'
 DIS. ELEV. 1285.9'
 DIS. PIPE: 1-36"x126'
 SKEW 15° R. H. F.

STA. 403+00 SB. 48.0' RT.
 1-INLET TYPE 8-MS REQ'D.
 GR. FLOW ELEV. 1290.7'
 DIS. ELEV. 1285.7'
 DIS. PIPE: 1-24"x126' R.C.C.P. CLASS III REQ'D.

STA. 409+14 SB. 34.1' LT.
 1-INLET TYPE 1-A REQ'D.
 GR. FLOW ELEV. 1300.82'
 DIS. ELEV. 1298.32'
 DIS. PIPE: 1-12"x82' P. U. U. REQ'D.
 2-10° ELBOWS REQ'D.

STA. 409+14 SB. 6.1' RT.
 1-INLET TYPE 1-A REQ'D.
 GR. FLOW ELEV. 1300.86'
 DIS. ELEV. 1298.36'
 DIS. PIPE: 1-12"x22' P. U. U. REQ'D.
 SKEW 45° L. H. F.

PROJECT I. D.	1173-2-76	SHEET NUMBER	5	TOTAL SHEETS	
FEDERAL PROJECT DESIGNATION					
Plan & Profile					
for					
U. S. H. 51					Lincoln County

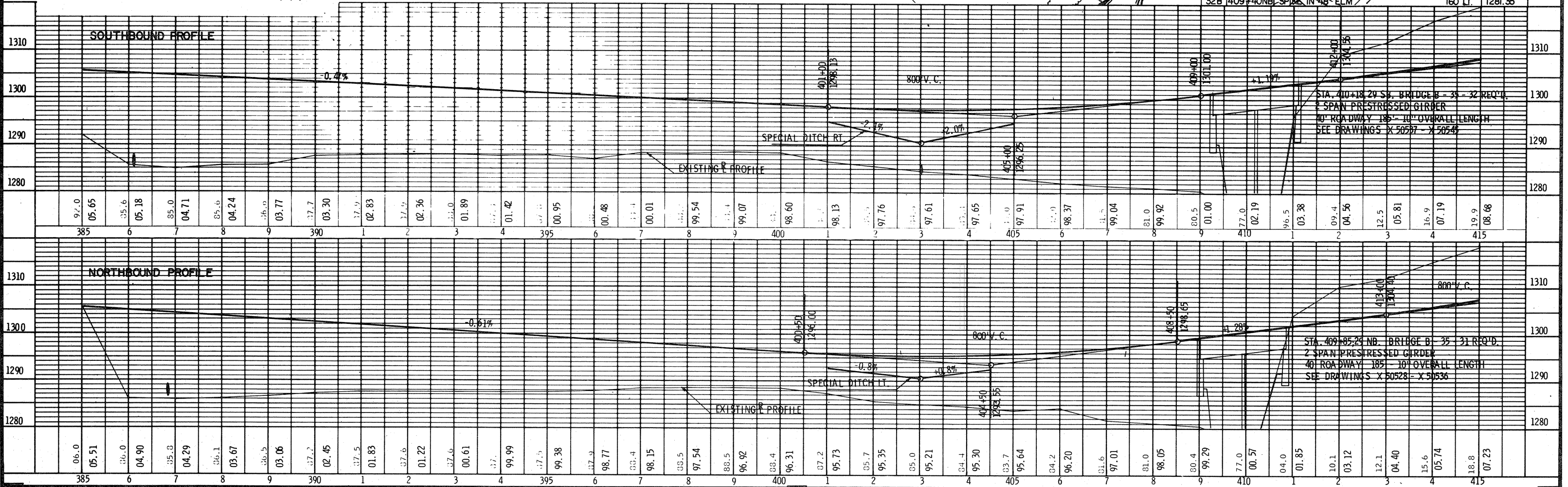


GEORGE PETERSON, ET AL
 STA. 386+50 NB. 25.6' LT.
 1-INLET TYPE 9-MS REQ'D.
 GR. FLOW ELEV. 1301.4'
 DIS. ELEV. 1286.2'
 INL. PIPE: 1-36"x120' R.C.C.P. CLASS III REQ'D.
 DIS. PIPE: 1-36"x44' R.C.C.P. CLASS III REQ'D.
 SKEW 15° R. H. F.

STA. 408+80 NB. 6.1' LT.
 1-INLET TYPE 1-A REQ'D.
 GR. FLOW ELEV. 1298.72'
 DIS. ELEV. 1296.22'
 DIS. PIPE: 1-12"x22' P. U. U. REQ'D.
 SKEW 45° R. H. F.

STA. 408+80 NB. 34.1' RT.
 1-INLET TYPE 1-A REQ'D.
 GR. FLOW ELEV. 1298.68'
 DIS. ELEV. 1296.18'
 DIS. PIPE: 1-12"x90' P. U. U. REQ'D.
 2-10° ELBOWS REQ'D.

NO.	STATION	DESCRIPTION	ELEV.
30	387+00 NB	SPIKE IN 10" RED PINE	120' RT. 1291.68
31	405+05 NB	SPIKE IN 28" W. PINE	190' RT. 1283.06
32	407+70 NB	SPIKE IN 12" MAPLE	100' RT. 1281.33
32A	409+10 NB	SPIKE IN 12" POPLAR	100' LT. 1281.80
32B	409+40 NB	SPIKE IN 48" ELM	160' LT. 1281.35



STA. 409+18.29 SB. BRIDGE B-35-32 REQ'D.
 2 SPAN PRESTRESSED GIRDER
 40' ROADWAY 185' 10" OVERALL LENGTH
 SEE DRAWINGS X 50527 - X 50541

STA. 409+85.29 NB. BRIDGE B-35-31 REQ'D.
 2 SPAN PRESTRESSED GIRDER
 40' ROADWAY 185' 10" OVERALL LENGTH
 SEE DRAWINGS X 50528 - X 50536