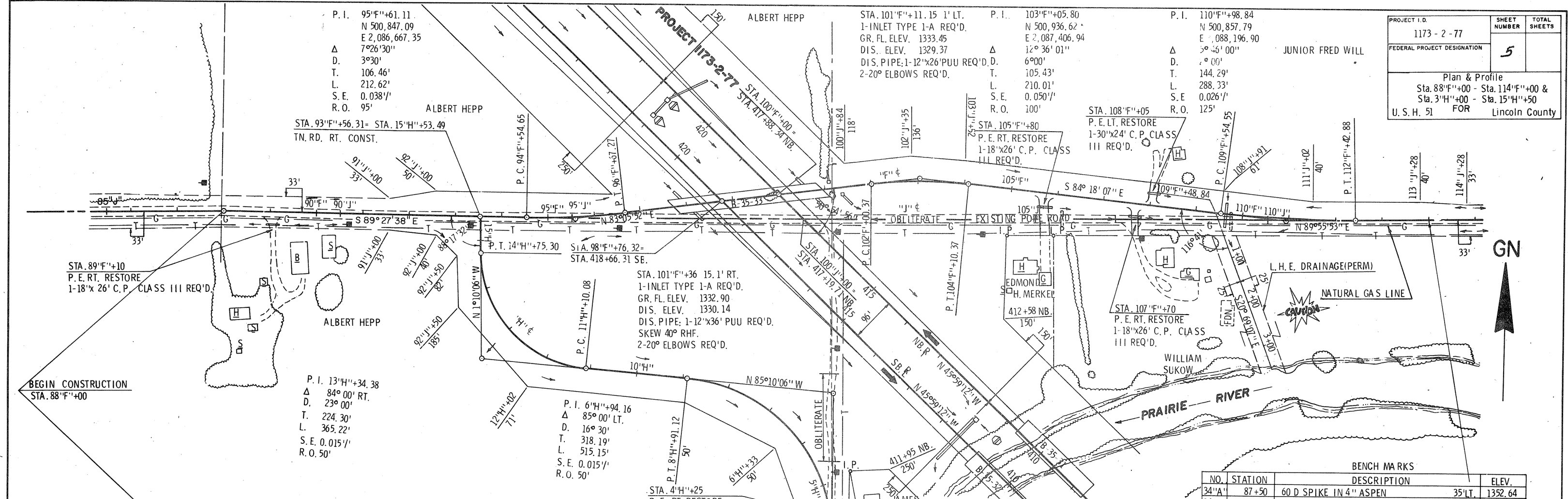
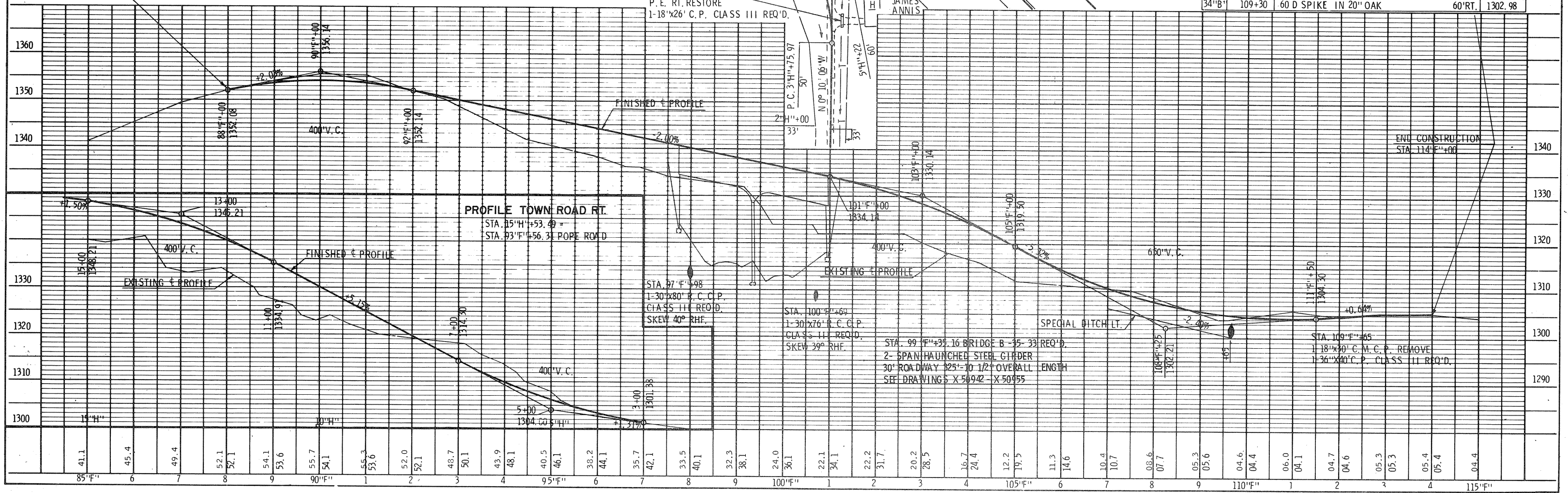


PROJECT I.D.	1173-2-77	SHEET NUMBER	5	TOTAL SHEETS	
FEDERAL PROJECT DESIGNATION					
Plan & Profile					
Sta. 88'+00 - Sta. 114'+00 & Sta. 3'+00 - Sta. 15'+50					
FOR U.S.H. 51					Lincoln County



BENCH MARKS			
NO.	STATION	DESCRIPTION	ELEV.
34'A	87+50	60 D SPIKE IN 4" ASPEN	35'LT, 1352.64
34'B	109+30	60 D SPIKE IN 20" OAK	60'RT, 1302.98



PROFILE TOWN ROAD RT.
 STA. 15'+00 - STA. 15'+50
 STA. 93'+00 - STA. 15'+50 POPE ROAD

STA. 97'+00
 1-30"x80" C.C.P. CLASS III REQ'D.
 SKEW 40° RHF.

STA. 100'+00
 1-30"x76" C.C.P. CLASS III REQ'D.
 SKEW 39° RHF.

STA. 99'+00 BRIDGE B-35-33 REQ'D.
 2-SPAN HAUNCHED STEEL GIRDER
 30' ROADWAY 325'-10 1/2' OVERALL LENGTH
 SEE DRAWINGS X 50942 - X 50955

STA. 109'+00
 1-18"x30" C.M.C.P. REMOVE
 1-36"x40" C.P. CLASS III REQ'D.