

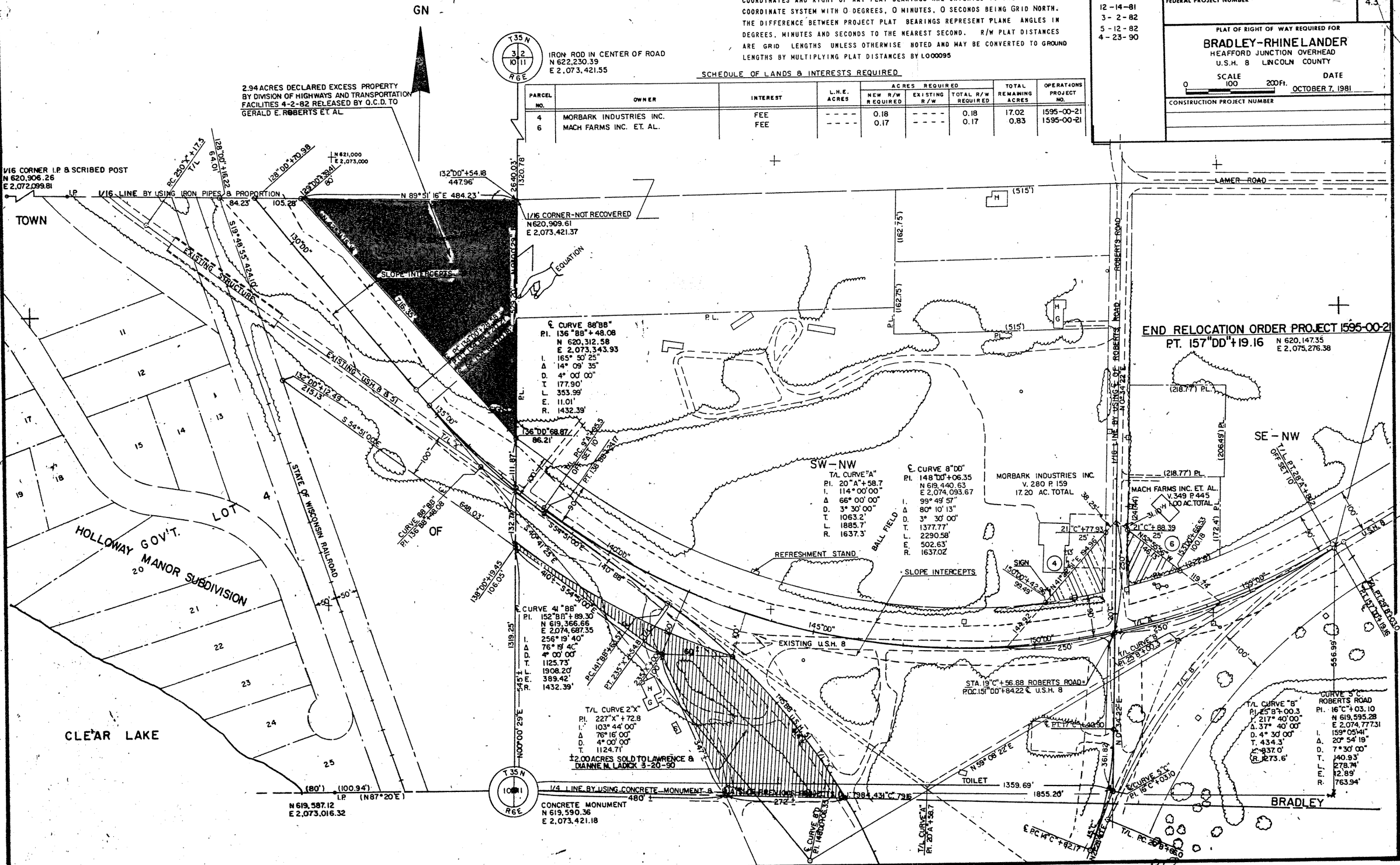
BEARING ORIENTATION AND GRID CONVERSION
 COORDINATES AND RIGHT OF WAY PLAT BEARINGS ARE ORIENTED TO THE WISCONSIN COORDINATE SYSTEM WITH 0 DEGREES, 0 MINUTES, 0 SECONDS BEING GRID NORTH. THE DIFFERENCE BETWEEN PROJECT PLAT BEARINGS REPRESENT PLANE ANGLES IN DEGREES, MINUTES AND SECONDS TO THE NEAREST SECOND. R/W PLAT DISTANCES ARE GRID LENGTHS UNLESS OTHERWISE NOTED AND MAY BE CONVERTED TO GROUND LENGTHS BY MULTIPLYING PLAT DISTANCES BY 1.000095

REVISION DATE	R/W PROJECT NUMBER	SHEET NUMBER
12-14-81	1595-00-21	4.3
3-2-82	FEDERAL PROJECT NUMBER	
5-12-82		
4-23-90		
PLAT OF RIGHT OF WAY REQUIRED FOR BRADLEY-RHINELANDER HEAFFORD JUNCTION OVERHEAD U.S.H. 8 LINCOLN COUNTY		
SCALE 100 200 Ft. DATE OCTOBER 7, 1981		
CONSTRUCTION PROJECT NUMBER		

SCHEDULE OF LANDS & INTERESTS REQUIRED

PARCEL NO.	OWNER	INTEREST	L.H.E. ACRES	ACRES REQUIRED			TOTAL REMAINING ACRES	OPERATIONS PROJECT NO.
				NEW R/W REQUIRED	EXISTING R/W	TOTAL R/W REQUIRED		
4	MORBARK INDUSTRIES INC.	FEE	---	0.18	---	0.18	17.02	1595-00-21
6	MACH FARMS INC. ET. AL.	FEE	---	0.17	---	0.17	0.83	1595-00-21

2.94 ACRES DECLARED EXCESS PROPERTY BY DIVISION OF HIGHWAYS AND TRANSPORTATION FACILITIES 4-2-82 RELEASED BY O.C.D. TO GERALD E. ROBERTS ET AL.



END RELOCATION ORDER PROJECT 1595-00-21
 PT. 157°00'19.16" N 620,147.35
 E 2,075,276.38