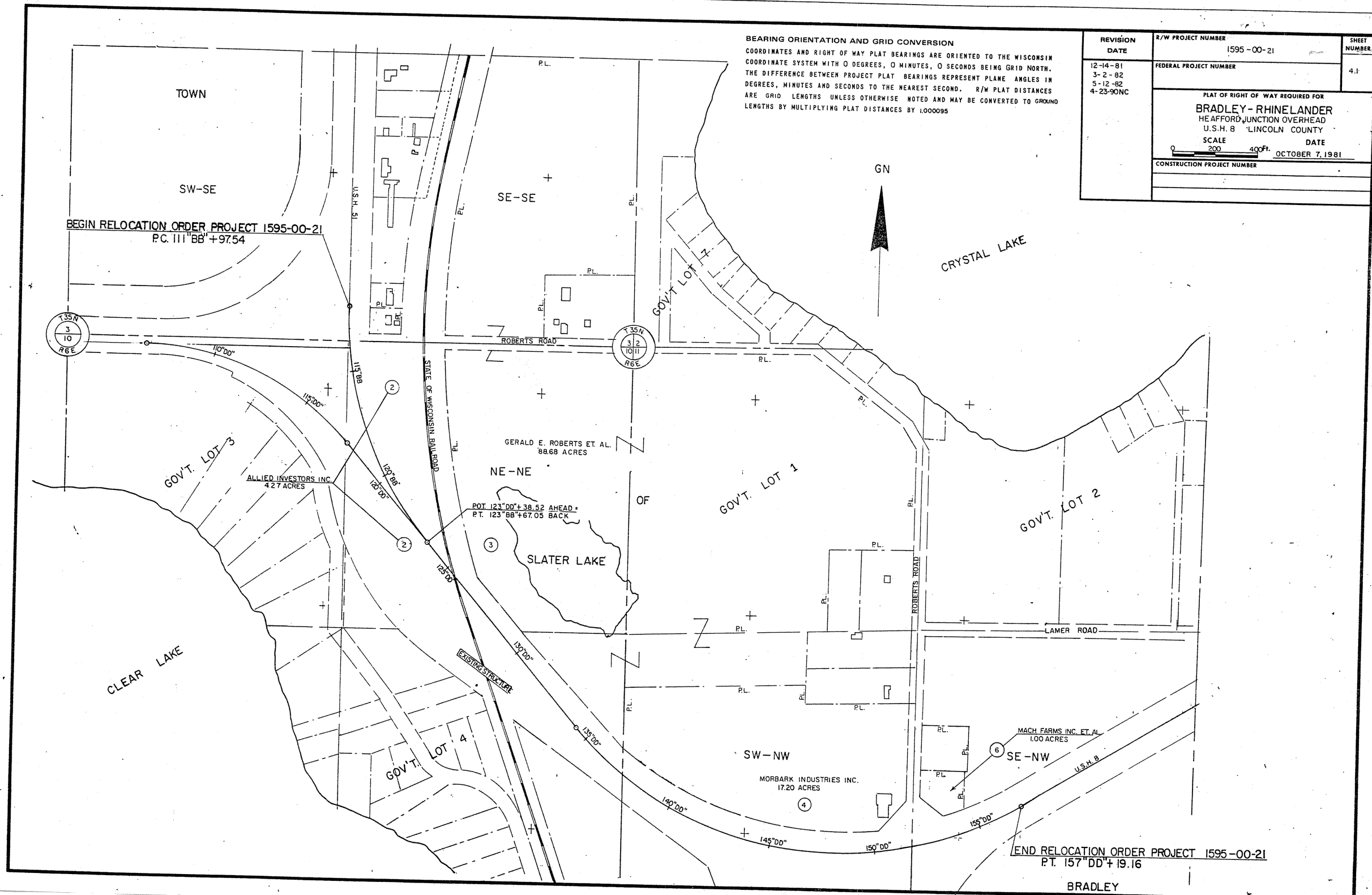


BEARING ORIENTATION AND GRID CONVERSION
 COORDINATES AND RIGHT OF WAY PLAT BEARINGS ARE ORIENTED TO THE WISCONSIN
 COORDINATE SYSTEM WITH 0 DEGREES, 0 MINUTES, 0 SECONDS BEING GRID NORTH.
 THE DIFFERENCE BETWEEN PROJECT PLAT BEARINGS REPRESENT PLANE ANGLES IN
 DEGREES, MINUTES AND SECONDS TO THE NEAREST SECOND. R/W PLAT DISTANCES
 ARE GRID LENGTHS UNLESS OTHERWISE NOTED AND MAY BE CONVERTED TO GROUND
 LENGTHS BY MULTIPLYING PLAT DISTANCES BY 1.000095

REVISION DATE	R/W PROJECT NUMBER	SHEET NUMBER
12-14-81	1595-00-21	4.1
3-2-82	FEDERAL PROJECT NUMBER	
5-12-82		
4-23-90NC		
PLAT OF RIGHT OF WAY REQUIRED FOR		
BRADLEY - RHINELANDER		
HEAFFORD JUNCTION OVERHEAD		
U.S.H. 8 LINCOLN COUNTY		
SCALE	DATE	
200	OCTOBER 7, 1981	
CONSTRUCTION PROJECT NUMBER		



BEGIN RELOCATION ORDER PROJECT 1595-00-21
 P.C. 111°58' + 97.54

END RELOCATION ORDER PROJECT 1595-00-21
 P.T. 157°00' + 19.16

BRADLEY