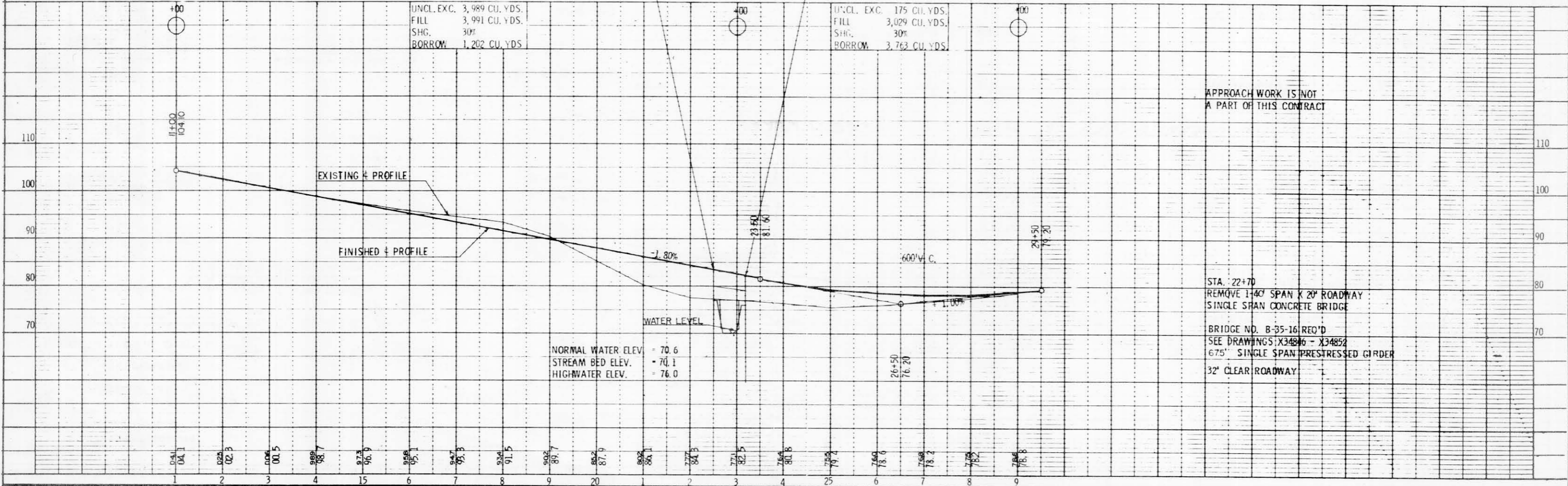


BENCH MARKS			
NO.	STATION	DESCRIPTION	ELEV.
1	11+35	SPIKE IN 8" MAPLE	116' RT. 100.00
2	21+16	SPIKE IN 6" POPLAR	94' LT. 75.17
3	29+63	MARK IN S.W. COR. UPPER CONC. STEP	36' LT. 80.13

NET CENTERLINE LENGTH STA. 22+50.25 - STA. 23+17.75 = 675.0 LIN.FT.

UNCL. EXC.	3,989 CU. YDS.	UNCL. EXC.	175 CU. YDS.
FILL	3,991 CU. YDS.	FILL	3,029 CU. YDS.
SHG.	30%	SHG.	30%
BORROW	1,202 CU. YDS.	BORROW	3,763 CU. YDS.



APPROACH WORK IS NOT A PART OF THIS CONTRACT

STA. 22+70
 REMOVE 1-40' SPAN X 20' ROADWAY
 SINGLE SPAN CONCRETE BRIDGE
 BRIDGE NO. B-35-16 REQ'D
 SEE DRAWINGS: X34846 - X34852
 675' SINGLE SPAN PRESTRESSED GIRDER
 32' CLEAR ROADWAY