

Sheet Number	Total Sheets
1	18

Index of Sheets

- Sheet No. 1 Title
- Sheet No. 2 Typical Cross Sections
- Sheet No. 2 Estimate of Quantities
- Sheet No. — Miscellaneous Quantities
- Sheet No. 3 Right of Way Plat
- Sheet No. 4 Plan and Profile Sta. 22+50.25 to Sta. 23+17.75
- Sheet No. 5-53 Standard Details
- Sheet No. 6-12 Drainage Structures
- Sheet No. 13 Design Templates
- Sheet No. 13-14 Earthwork Estimates
- Sheet No. 15-18 Cross Sections



STATE OF WISCONSIN
DEPARTMENT OF TRANSPORTATION
DIVISION OF HIGHWAYS

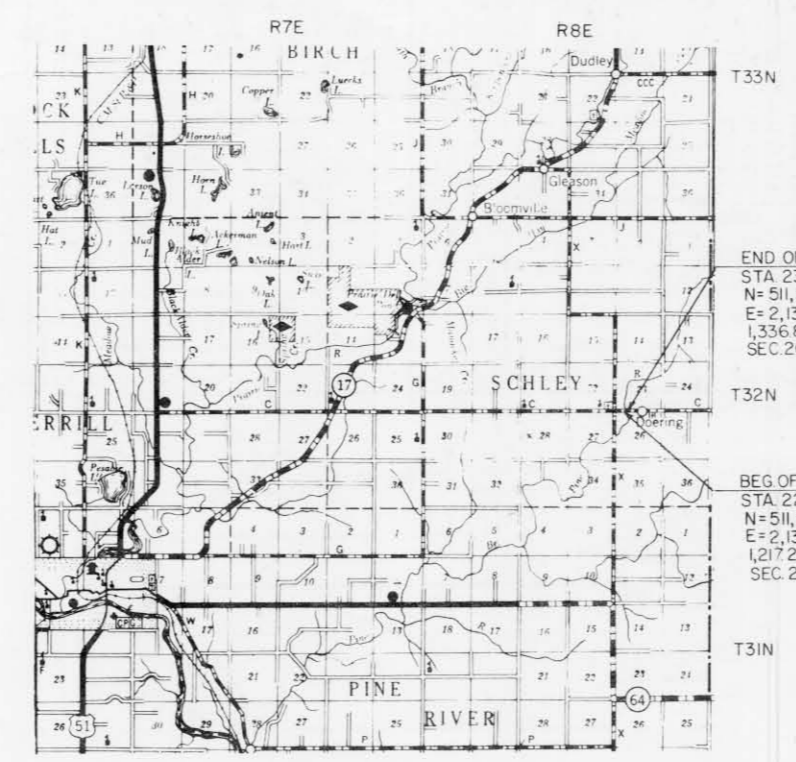
PLAN AND PROFILE OF PROPOSED
PINE RIVER BRIDGE
 C.T.H. "C"
 LINCOLN COUNTY

PROJECT IDENTIFICATION NUMBER	FEDERAL PROJECT DESIGNATION
9407 1 70	S 0192 (6)

Scales: Plan 1 in. = 100 ft.
 Profile Hor. 1 in. = 100 ft. Vert. 1 in. = 10 ft.
 Cross Sections Hor. 1 in. = 5 FT. Vert. 1 in. = 5 FT.

Design Designation

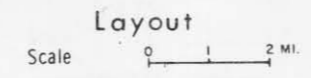
- A. D. T. 1969 • 150
- A. D. T. 1989 • 300
- D. H. V. • 45
- D. • 65%
- T. • 13%
- V. • 50 MPH.



END OF PROJECT S 0192(6) / 9407-1-70
 STA. 23+17.75 = STA. 324+24.50 PROJECT S 0192(4)
 N=511,530 (±200')
 E=2,138,780 (±200')
 1,336.85' W OF THE N. 1/4 COR.
 SEC. 26, T32N, R8E

BEG OF PROJECT S 0192(6) / 9407-1-70
 STA. 22+50.25 = STA. 323+58 PROJECT S 0192(4)
 N=511,530 (±200')
 E=2,138,710 (±200')
 1,217.25' E. OF THE NW. COR.
 SEC. 26, T32N, R8E

SCALED FROM U.S.G.S. TOPOGRAPHIC MAP, (DOERING)
 WISCONSIN, QUADRANGLE FOR IDENTIFICATION ONLY.
 ALL COORDINATES SHOWN ON THIS PLAN ARE
 REFERENCED TO THE WISCONSIN CO-ORDINATE
 SYSTEM CENTRAL ZONE.



Total Net Length of Centerline • 0.013 Mi.

Conventional Signs

- | | |
|---|---|
| <ul style="list-style-type: none"> State Line County Line Township or Range Line Section Line New Right of Way Line Present Right of Way Line Wire Fence { Woven { Barbed Lot Line Corporate or City Limits Property Line Traveled Way or P. E. Railroads Base or Survey Line | <ul style="list-style-type: none"> Culverts in Place Culverts Required Drop Inlet Power Pole Telephone or Telegraph Pole Right of Way Markers Reference Stake for Hubs Only Marsh Hedge Trees Ground Elevation Datum Line 73.9 Grade Elevation Datum Line 76.16 |
|---|---|

STATE OF WISCONSIN DEPARTMENT OF TRANSPORTATION DIVISION OF HIGHWAYS	
Surveyor: I. SONNENBERG	Map Book: 273
District Computer: R. HATLEBACK	M. O. Checker: L. L. J.
District Checker: G. WINAT	Correct
Correct:	
Date: 3/3/69	R. O. Schindler District Engineer
Recommended for Approval:	
Date: 4/7/69	E. J. Byrd Chief Design Engineer
Approved:	
Date: 4-8-69	H. J. Cummings State Highway Engineer
U.S. DEPARTMENT OF TRANSPORTATION FEDERAL HIGHWAY ADMINISTRATION BUREAU OF PUBLIC ROADS	
REGION 4 WISCONSIN DIVISION	
Approved:	
Date:	
Division Engineer	

P. 14
MAY 23