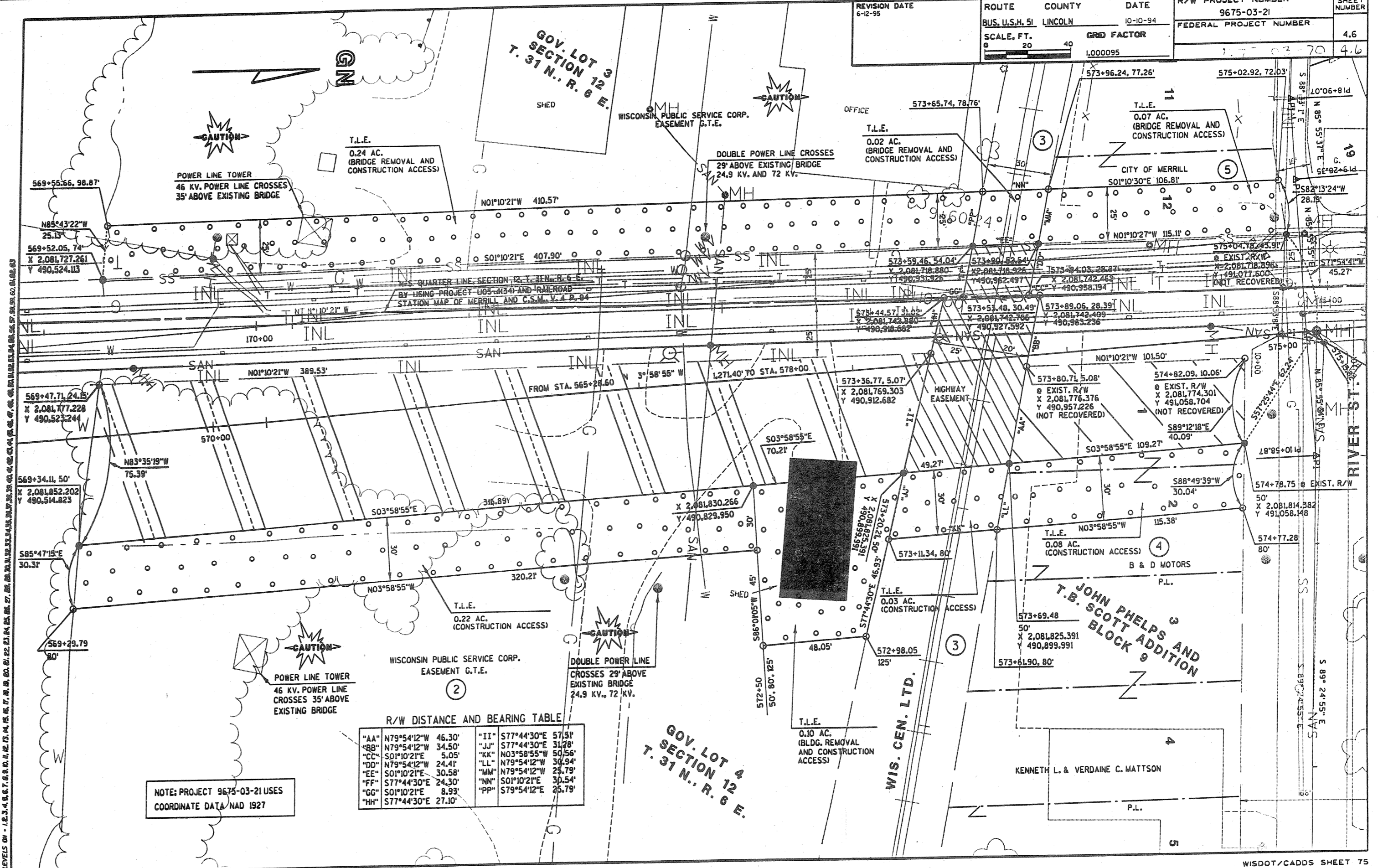


REVISION DATE 6-12-95	ROUTE COUNTY BUS. U.S.H. 51 LINCOLN	DATE 10-10-94	R/W PROJECT NUMBER 9675-03-21	SHEET NUMBER 4.6
SCALE, FT. 0 20 40	GRID FACTOR 1.000095	FEDERAL PROJECT NUMBER 70 4.6		



NOTE: PROJECT 9675-03-21 USES COORDINATE DATA NAD 1927

R/W DISTANCE AND BEARING TABLE

"AA"	N79°54'12"W	46.30'	"II"	S77°44'30"E	57.51'
"BB"	N79°54'12"W	34.50'	"JJ"	S77°44'30"E	31.28'
"CC"	S01°10'21"E	5.05'	"KK"	N03°58'55"W	50.56'
"DD"	N79°54'12"W	24.41'	"LL"	N79°54'12"W	30.94'
"EE"	S01°10'21"E	30.58'	"MM"	N79°54'12"W	25.79'
"FF"	S77°44'30"E	24.30'	"NN"	S01°10'21"E	30.54'
"GG"	S01°10'21"E	8.93'	"PP"	S79°54'12"E	25.79'
"HH"	S77°44'30"E	27.10'			