

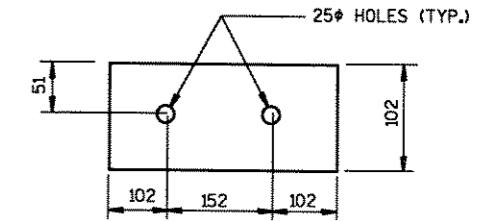
**NOTES**

ALL REQ'D. CONNECTORS AND HARDWARE ARE INCLUDED IN THE COST FOR "TREATED LUMBER AND TIMBER".

ALL TIMBER CONNECTORS AND HARDWARE SHALL BE GALVANIZED.

ALL PLATE WASHERS SHALL BE 76 X 76 X 8 UNLESS OTHERWISE SHOWN OR NOTED.

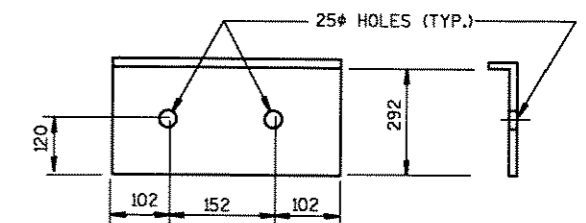
DESTROY THREADS ON ALL BOLTS WITH A CENTER PUNCH AFTER TIGHTENING NUT.



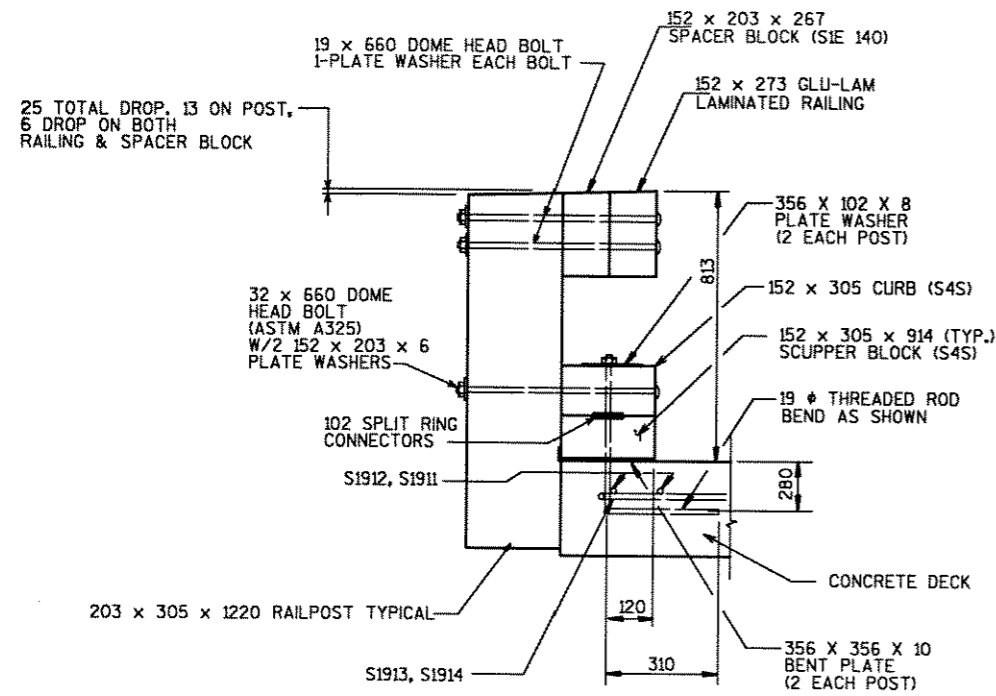
**PLATE WASHER FOR THREADED ROD**  
356 X 102 X 8 (2 EACH POST)

**BILL OF TREATED TIMBER RAILING**

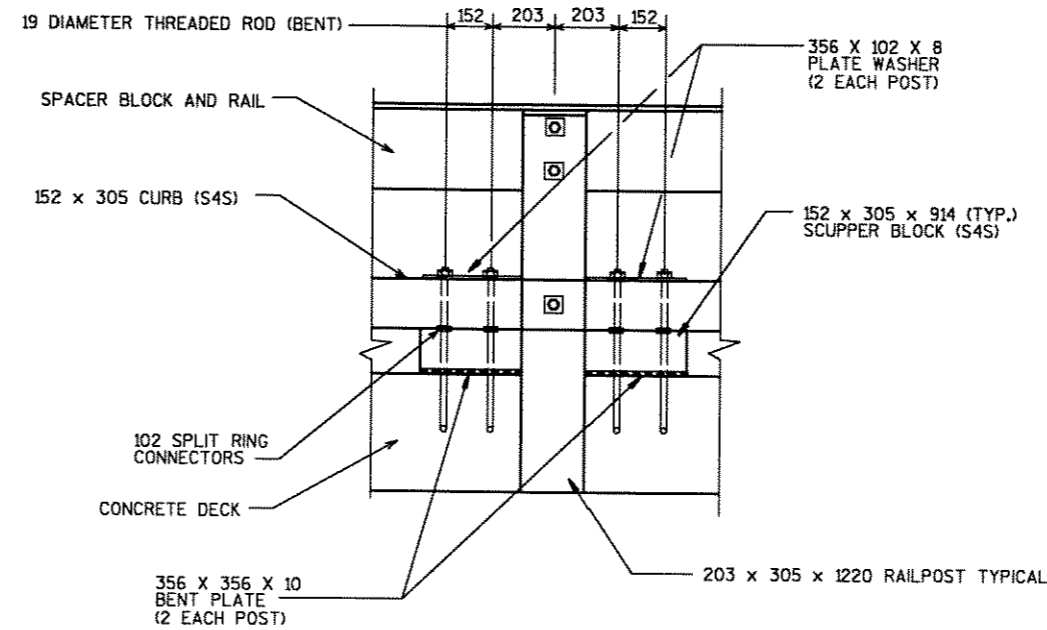
ITEM	NO REQ'D.	SIZE
SCUPPER BLOCK	42	152 X 305 X 914
RAIL POST	42	203 X 305 X 1220
CURB ON DECK	2	152 X 305 X 27920
GLU-LAM RAIL ON DECK	2	152 X 273 X 27920
RAIL POST SPACER	42	152 X 203 X 267
CURB ON WINGS	4	152 X 305 X 2450
GLU-LAM RAIL ON WINGS	4	152 X 273 X 2450



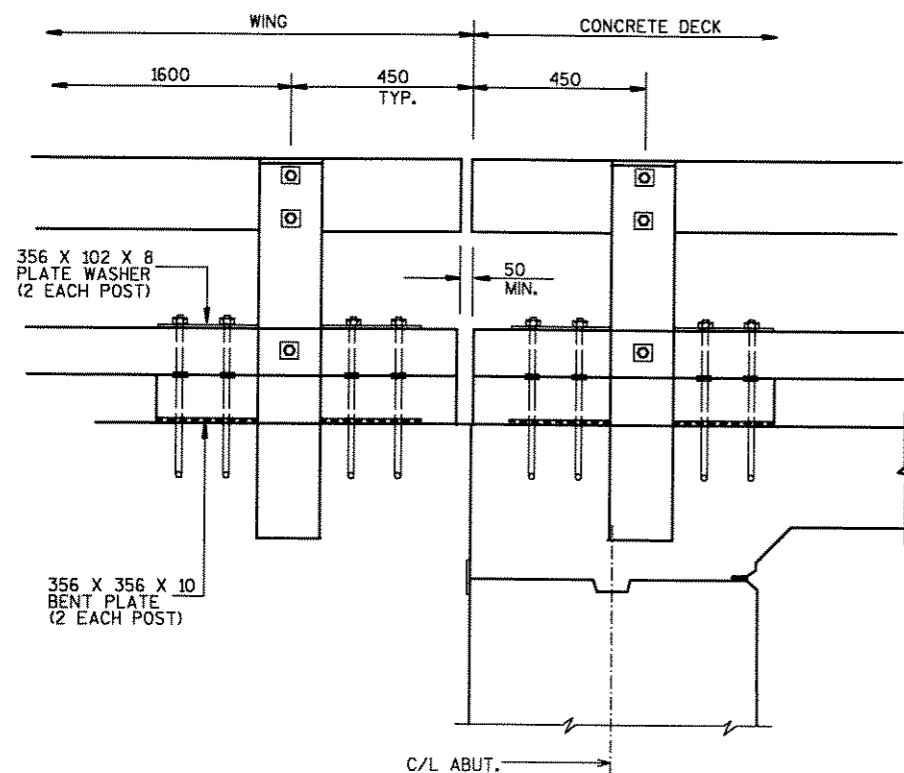
**BENT PLATE DETAIL**  
356 X 356 X 10



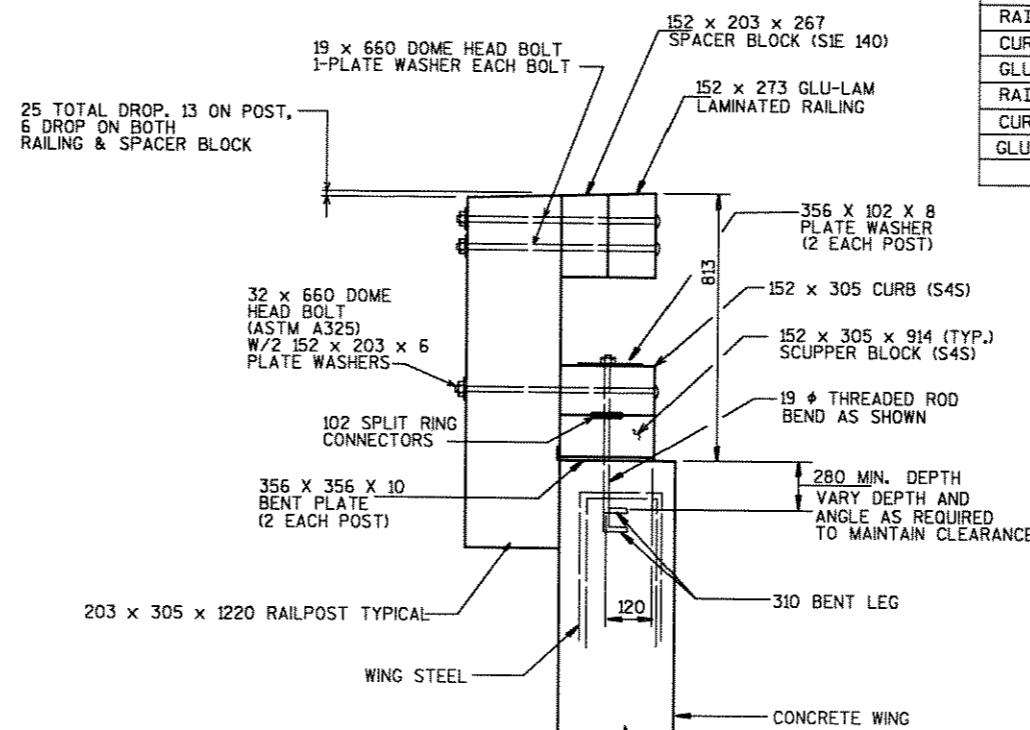
**SECTION AT RAILPOST**  
(ON DECK)



**CURB AND SCUPPER DETAIL**



**DETAILS AT ABUTMENTS**



**SECTION AT RAILPOST**  
(ON WINGS)

NO.	DATE	REVISION	BY
STATE OF WISCONSIN DEPARTMENT OF TRANSPORTATION			
<b>STRUCTURE B-35-137</b>			
CONST. SPEC.	1996	DRAWN BY NJA	PLANS CK'D. CJB
<b>TIMBER RAILING</b>			SHEET 10 OF 10