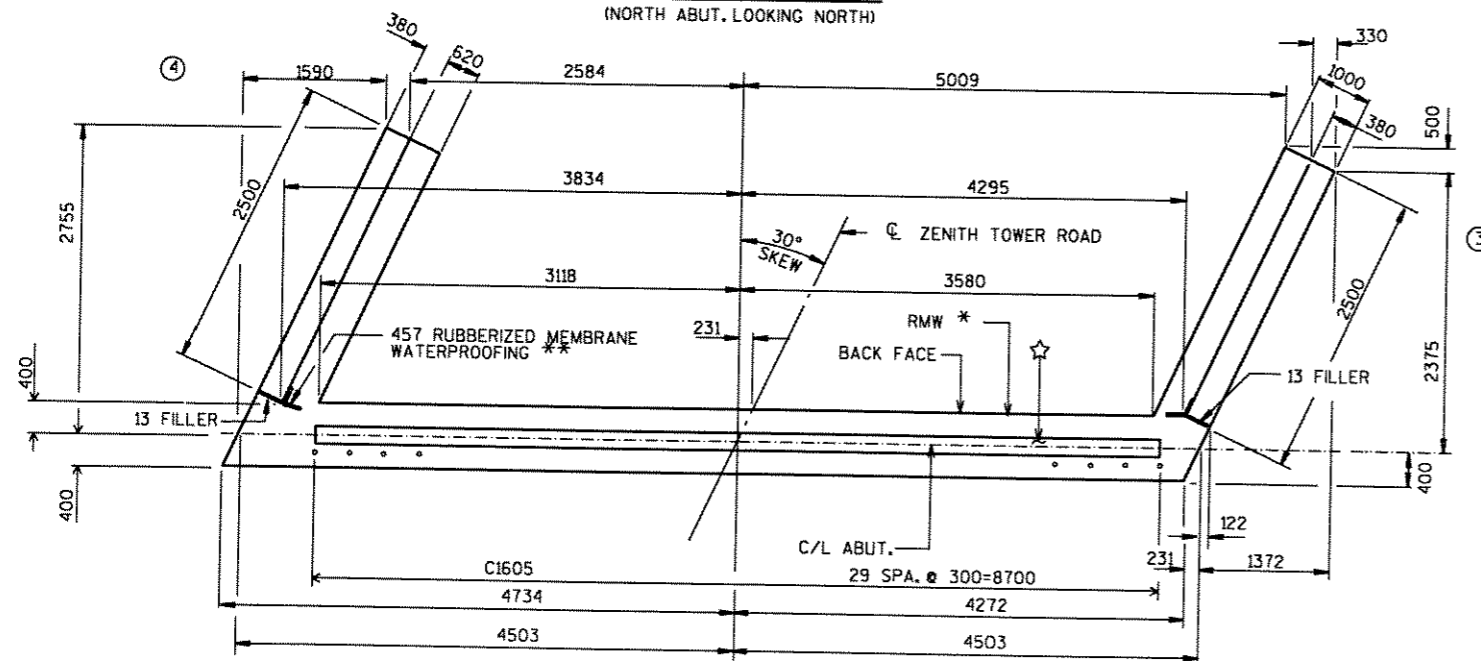
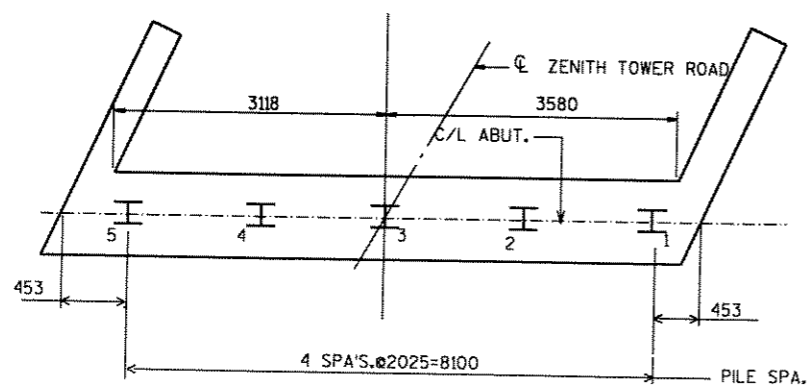


ELEVATION

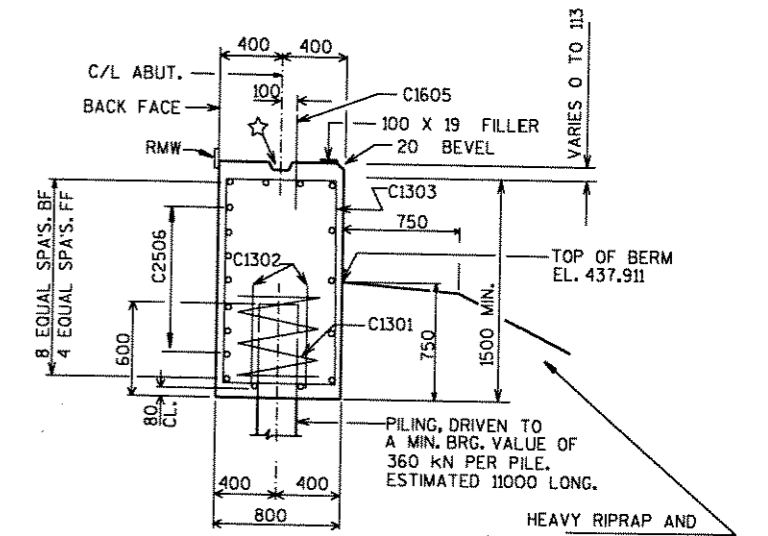
(NORTH ABUT. LOOKING NORTH)



PLAN



PILE PLAN



SECT. THRU BODY

ALL HORIZONTAL BARS NOT LABELLED ARE C1904 BARS.

HEAVY RIPRAP AND GEOTEXTILE FABRIC TYPE HR SEE DETAILS SHEET 1

B.F.=BACK FACE
W.T.=WING TIP
F.F.=FRONT FACE

** 457 RUBBERIZED MEMBRANE WATERPROOFING TO EXTEND FROM BRIDGE SEAT TO TOP OF WING AND BETWEEN INSIDE FACES OF WINGS.

NOTE: SEAL ALL VERT. AND HORIZ. JOINTS OF RUBBERIZED MEMBRANE WATERPROOFING.

* EXTEND BETWEEN WINGS HORIZ. OVER FILLETS.

☆ CONST. JOINT KEYWAY FORMED WITH A SURFACED, BEVELED 38 X 140. TERMINATE 300 FROM ABUT. ENDS

NOTE: FILL/EXCAVATE TO BOTTOM OF FOOTING EL. 437.161 BEFORE DRIVING PILING.

NOTE: C1605 BARS MAY BE PLACED AFTER CONC. IS POURED, BUT BEFORE INITIAL SET HAS OCCURED.

NOTE: ABUTMENT SUPPORTED ON HP 250mm X 62kg/m STEEL PILING DRIVEN TO A MIN. BRG. VALUE OF 360 kN PER PILE, EST. 11000 LONG. PILE POINTS REQUIRED.

NOTE: FOR PILE SPLICE AND PILE POINT DETAIL SEE SHEET 2.

NO.	DATE	REVISION	BY
STATE OF WISCONSIN DEPARTMENT OF TRANSPORTATION			
STRUCTURE B-35-137			
CONST. SPEC.	1996	DRAWN BY NJA	PLANS CKD. CJB
NORTH ABUTMENT			SHEET 6 OF 10