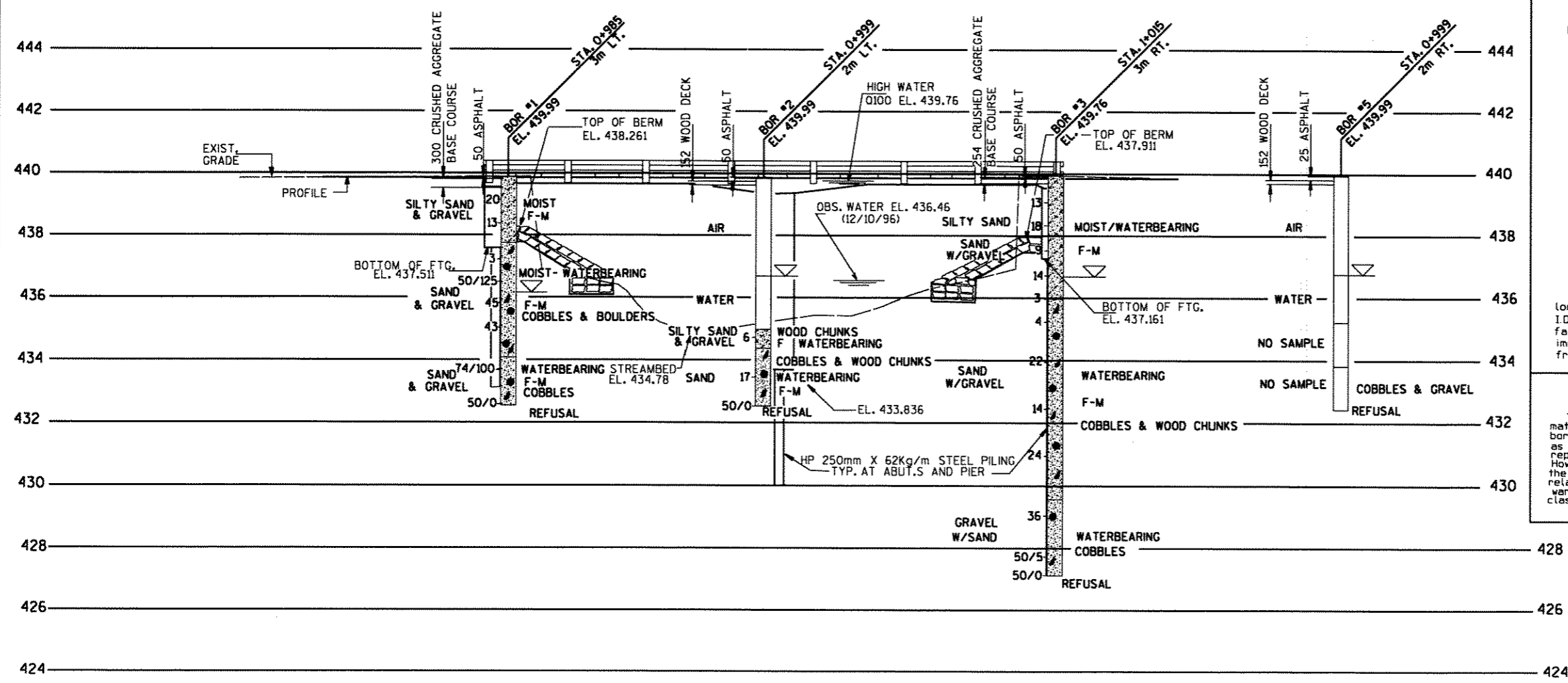
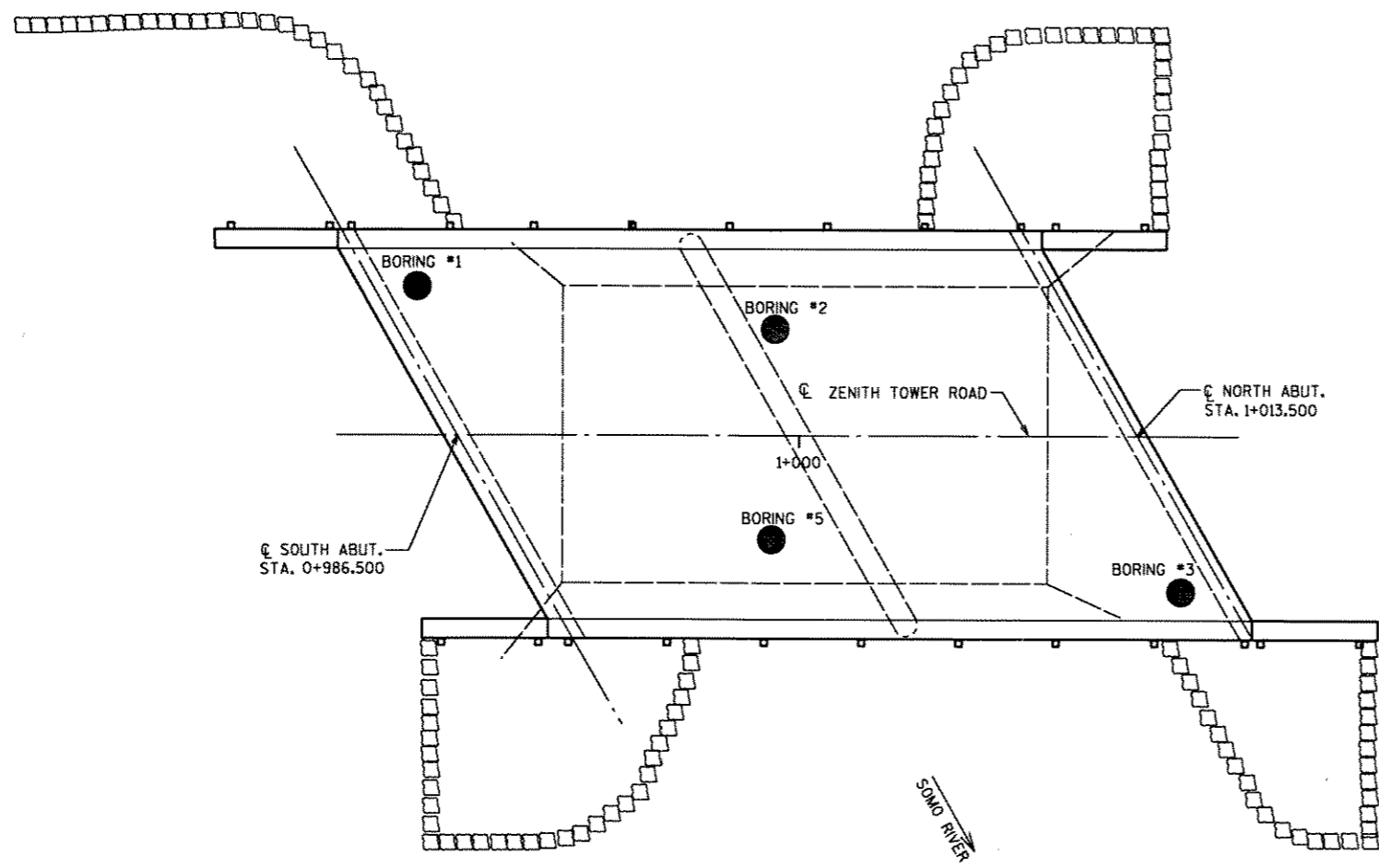


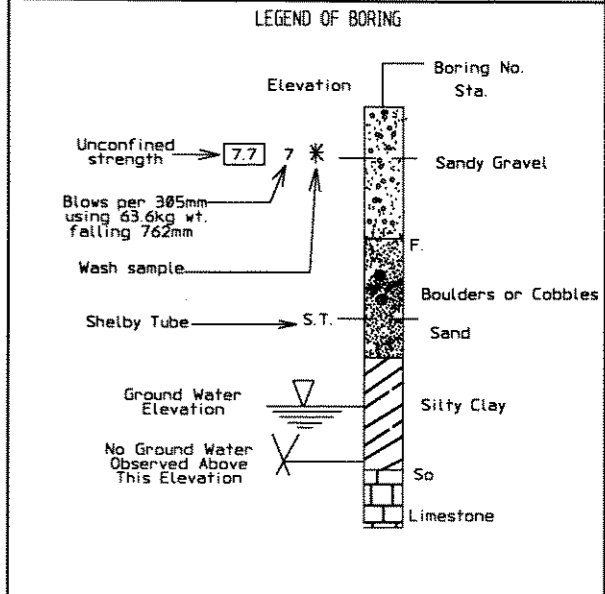
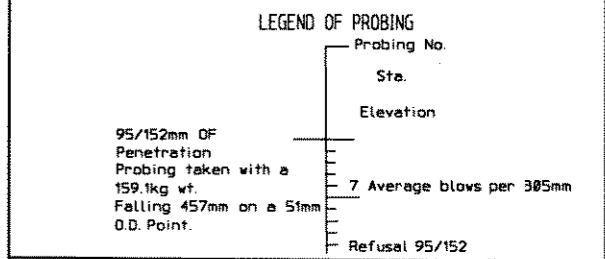
BORINGS BY  
MAXIM TECHNOLOGIES, INC.  
WAUSAU, WISCONSIN  
ON APRIL 24, 1997



ABBREVIATIONS

F---FINE	M---MEDIUM	C---COARSE
Ws---WEATHERED		So---SOUND

MATERIAL SYMBOLS

Unless otherwise specified, the blows per 305mm at the locations indicated are based on driving a 51mm O.D. x 35mm I.D. split spoon sampler with a 63.6kg hammer having a free fall of 762mm. The blow count is taken in undisturbed soil immediately below a cased or open hole eliminating side friction on the drive pipe.

SUBSURFACE EXPLORATION FOR FOUNDATION DESIGN AND BIDDERS INFORMATION

To obtain relative data concerning the character of material in and upon which the foundation might be built, borings and/or soundings were made at points approximately as indicated on this drawing. The data presented herein represents the findings of the subsurface explorations made. However, because the depths investigated are limited and the area of the borings and/or soundings is very small in relation to the entire area, the Division of Highways does not warrant conditions below the depths investigated or that the classification of material encountered in these investigations is necessarily typical of the entire site.

NO.	DATE	REVISION	BY
STATE OF WISCONSIN DEPARTMENT OF TRANSPORTATION			
<b>STRUCTURE B-35-137</b>			
CONST. SPEC.	1996	DRAWN BY	CJB
		PLANS CK'D.	JAR
<b>SUBSURFACE EXPLORATION</b>			SHEET 3 OF 10