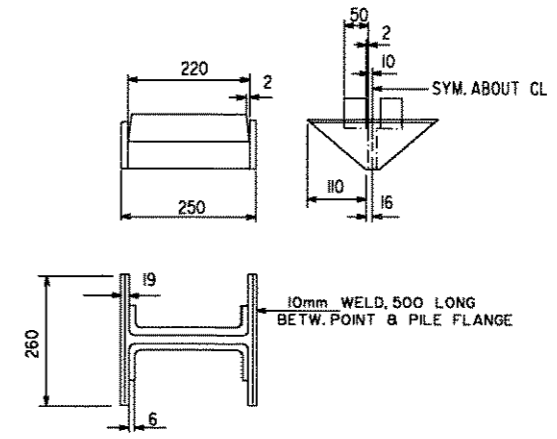


**CROSS SECT. THRU RDWY.**  
LOOKING NORTH



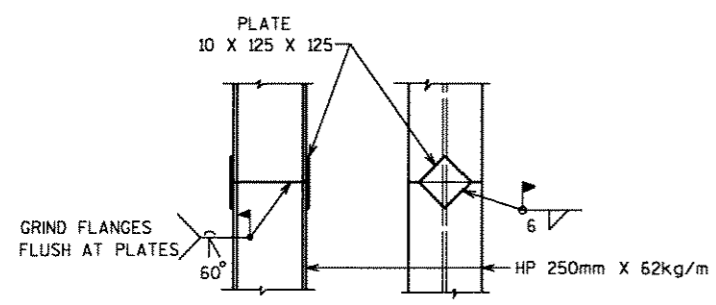
**POINT NOTES**

1. MATERIAL - CAST STEEL (ASTM A-27-84-65-35)
2. ALL FILLETS - 10mm
3. ALL WELDS BETW. PILE & POINT TO BE IN ACCORDANCE WITH AWS SPEC'S. WELD FLANGES TO FITTING ON OUTSIDE FACES.
4. CONTRACTOR MAY USE AN ALTERNATE DESIGN UPON APPROVAL OF THE ENGINEER

**PILE POINT DETAIL**

**TOTAL ESTIMATED QUANTITIES**

BID ITEMS	UNIT	SOUTH ABUT.	PIER	NORTH ABUT.	SUPER.	TOTALS
REMOVING OLD BRIDGE, STA. 1+000	L.S.	---	---	---	---	1
EXCAVATION FOR STRUCTURES, BRIDGES B-35-137	L.S.	---	---	---	---	1
STRUCTURE BACKFILL	m3	85	---	85	---	170
CONCRETE MASONRY, BRIDGES	m3	21	32	21	120	194
PROTECTIVE SURFACE TREATMENT	m2	---	---	---	220	220
HIGH STRENGTH BAR STEEL REINFORCEMENT, BRIDGES	Kg	980	900	980	7950	10810
COATED HIGH STRENGTH BAR STEEL REINFORCEMENT, BRIDGES	Kg	110	---	110	5310	5530
STEEL PILING, DELIVERED AND DRIVEN HP 250mm X 62kg/m	m	20	68	55	---	143
PILE POINTS	EACH	5	8	5	---	18
TREATED LUMBER AND TIMBER	m3	---	---	---	11.1	11.1
RUBBERIZED MEMBRANE WATERPROOFING	m2	5	---	5	---	10
HEAVY RIPRAP	m3	60	---	60	---	120
GEOTEXTILE FABRIC, TYPE 'HR'	m2	100	---	100	---	200
NON-BID ITEMS						
FILLER	SIZE	---	---	---	---	13 & 19



**PILE SPLICE DETAILS**

NO.	DATE	REVISION	BY
STATE OF WISCONSIN DEPARTMENT OF TRANSPORTATION			
<b>STRUCTURE B-35-137</b>			
CONST. SPEC.	1996	DRAWN BY	CJB [PLANS CK'D.] JAR
<b>CROSS SECTION &amp; QUANTITIES</b>			SHEET 2 OF 10