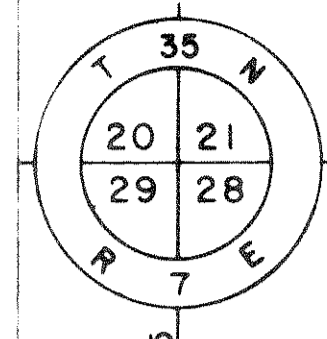


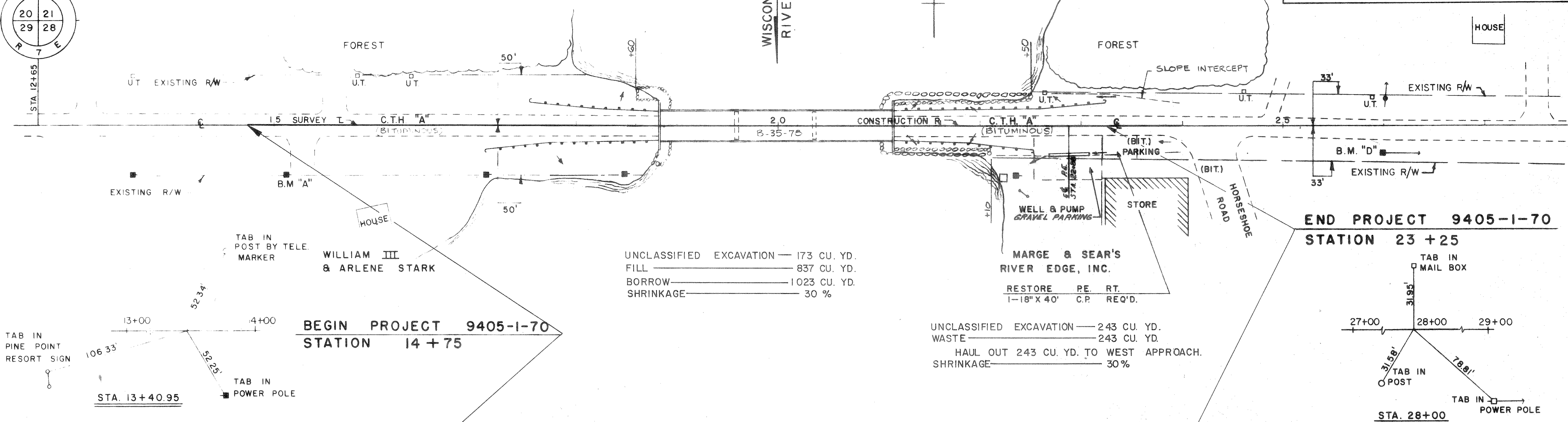
BENCH MARKS			
NO.	STATION	DESCRIPTION	ELEV.
A	15+14	R.R. SPIKE IN POWER POLE	48.0' RT 1467.90
D	25+98	R.R. SPIKE IN POWER POLE	27.0' RT 1476.16

STATE PROJECT NUMBER	SHEET
9405-1-70	
PLAN AND PROFILE	
STA. 13+00 — STA. 27+00	
C.T.H. "A" — KING TOWNSHIP	
LINCOLN COUNTY, WISCONSIN	



GROVER & RUTH EATHERTON

LAWRENCE & KATHRYN SALUS



UNCLASSIFIED EXCAVATION — 173 CU. YD.
 FILL — 837 CU. YD.
 BORROW — 1023 CU. YD.
 SHRINKAGE — 30 %

UNCLASSIFIED EXCAVATION — 243 CU. YD.
 WASTE — 243 CU. YD.
 HAUL OUT 243 CU. YD. TO WEST APPROACH.
 SHRINKAGE — 30 %

BEGIN PROJECT 9405-1-70
STATION 14 + 75

END PROJECT 9405-1-70
STATION 23 + 25

NET CENTERLINE LENGTH STA 18+50 TO STA 24+00 = 550 LIN. FT.

