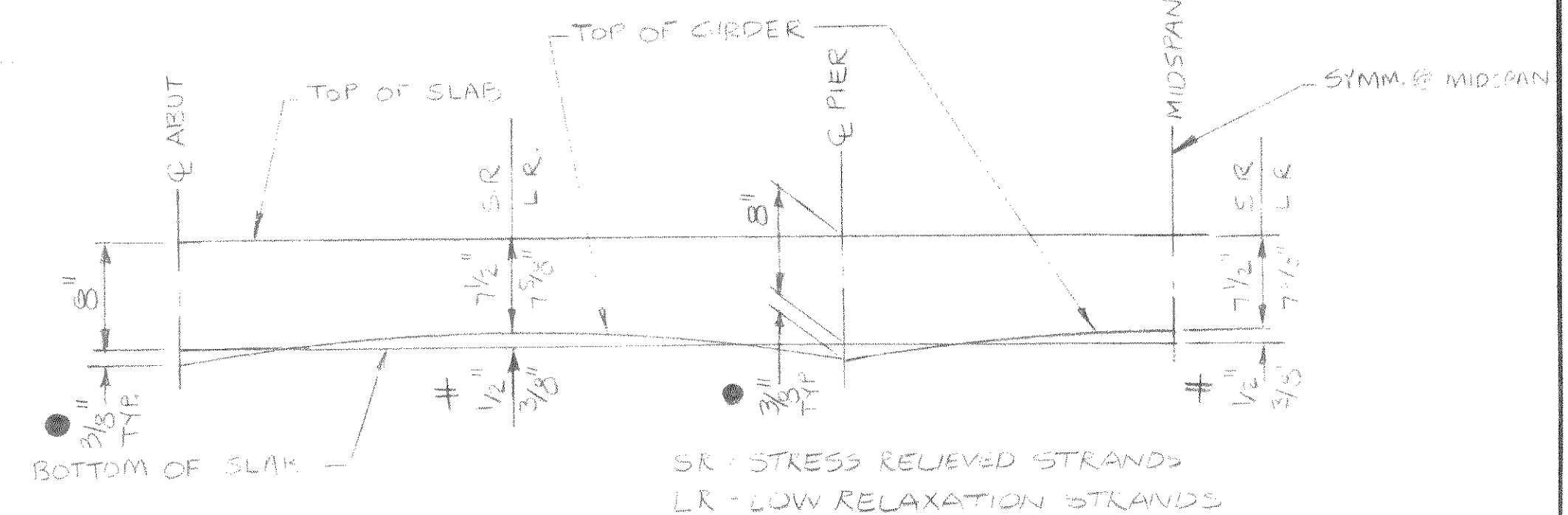


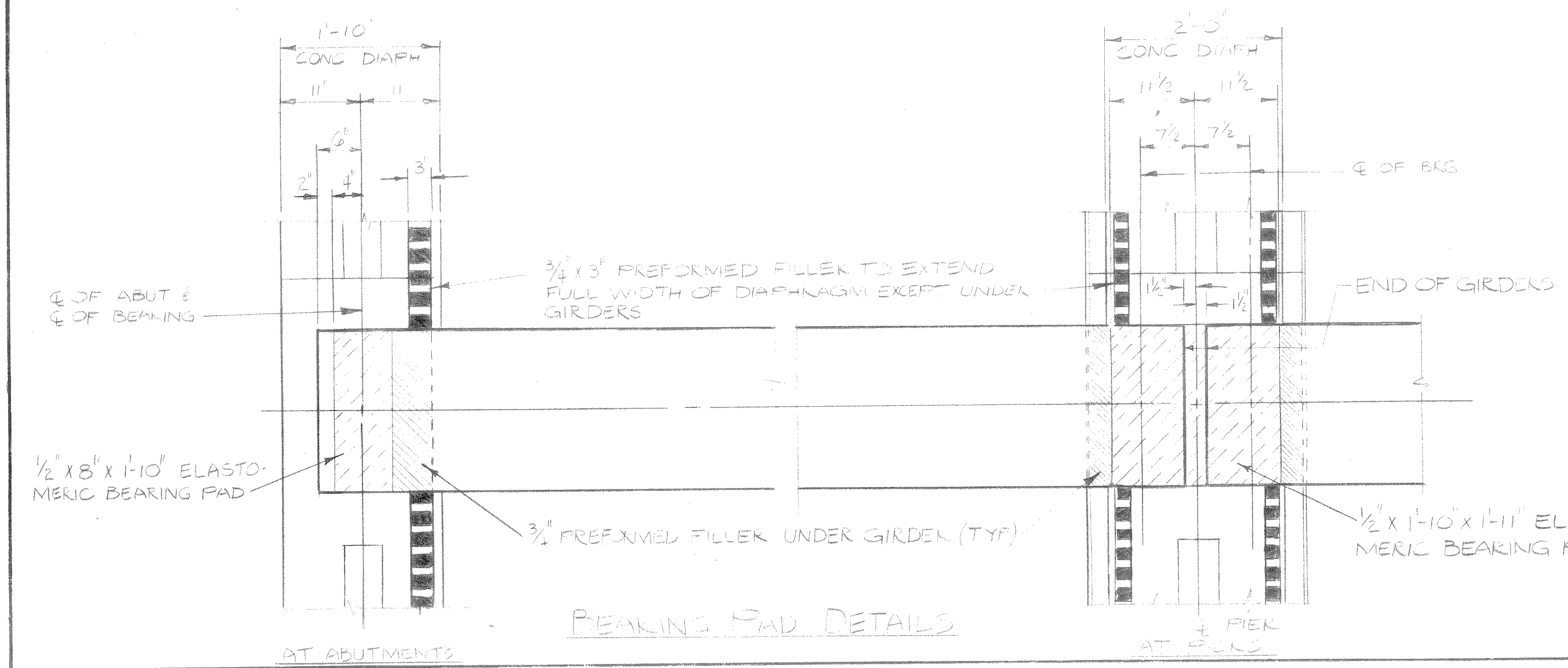
PARTIAL LONGITUDINAL SECTION



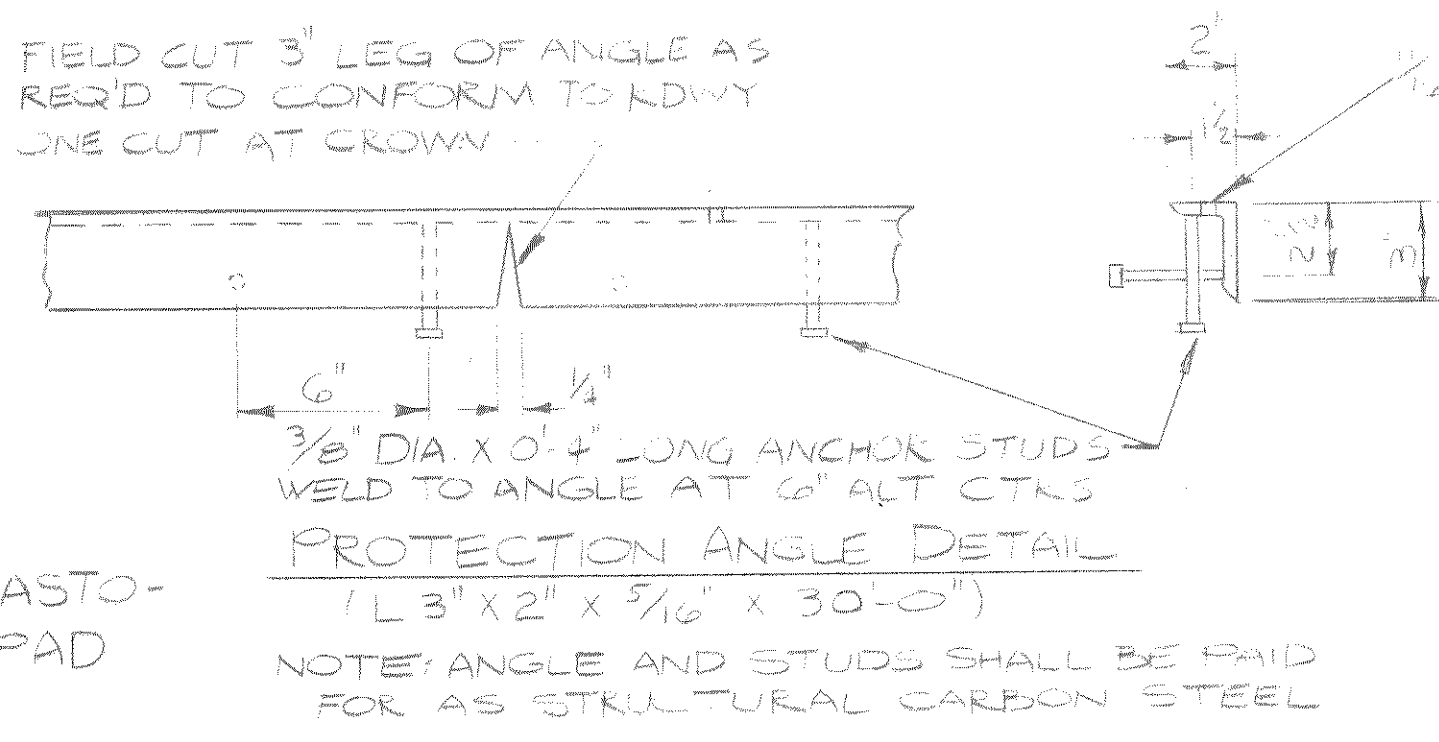
SLAB FORMING DIAGRAM

● IF VARIATIONS IN PRESTRESS CAMBER AND OTHER CONSTRUCTION DISCREPANCIES, ARE OF SUCH A MAGNITUDE SO THAT THE MAX. ALLOWABLE IMBEDMENT AS NOTED BELOW WILL BE EXCEEDED, THESE DIMENSIONS WILL BE REVISED. THE 1/2" IMBEDMENT & THE PLAN SLAB THICKNESS WILL BE HELD WHILE THE GRADE LINE WILL BE REVISED.

† TO COMPENSATE FOR VARIATIONS IN PRESTRESS CAMBER & OTHER MINOR CONSTRUCTION DISCREPANCIES, THE IMBEDMENT & THE \bar{C} OF THE SPAN MAY BE VARIED WITH A MAX. OF 1/2" ALLOWABLE IMBEDMENT AND THE SLAB HELD TO PLAN THICKNESS.



BEARING PAD DETAILS



PROTECTION ANGLE DETAIL
1 L 3" X 2" X 5/16" X 30'-0"
NOTE: ANGLE AND STUDS SHALL BE PAID FOR AS STRUCTURAL CARBON STEEL

NO.	DATE	REVISION	BY
MEAD AND HUNT, INC. CONSULTING ENGINEERS MADISON, WISCONSIN			
STATE OF WISCONSIN DEPARTMENT OF TRANSPORTATION DIVISION OF HIGHWAYS			
STRUCTURE		B-35-78	
CONST. SPEC.	1975	DRAWN BY	B.G.C. PLANS CHECKED R.I.S.
SUPERSTRUCTURE			SHEET 7 OF 8
X60131			