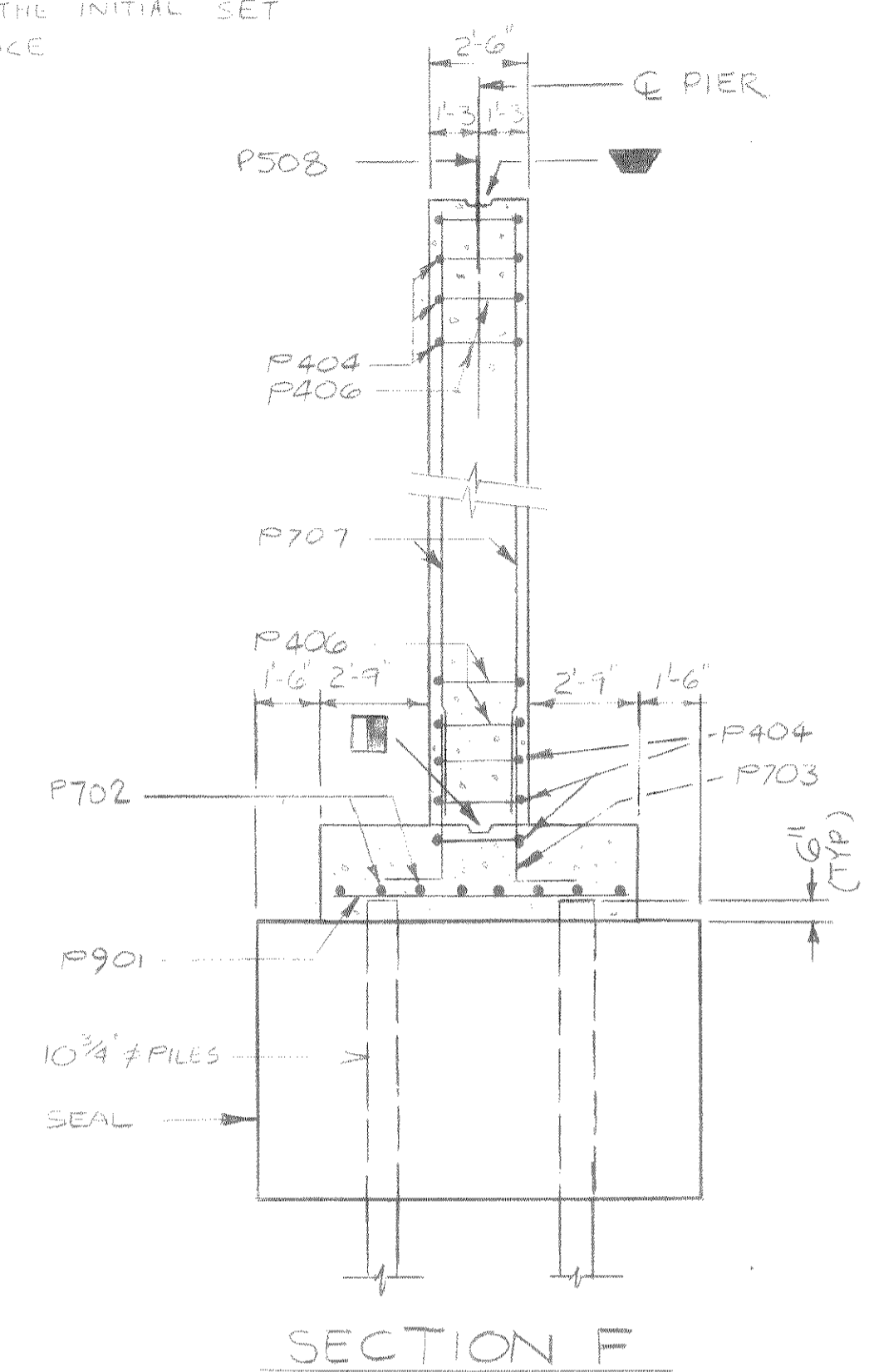


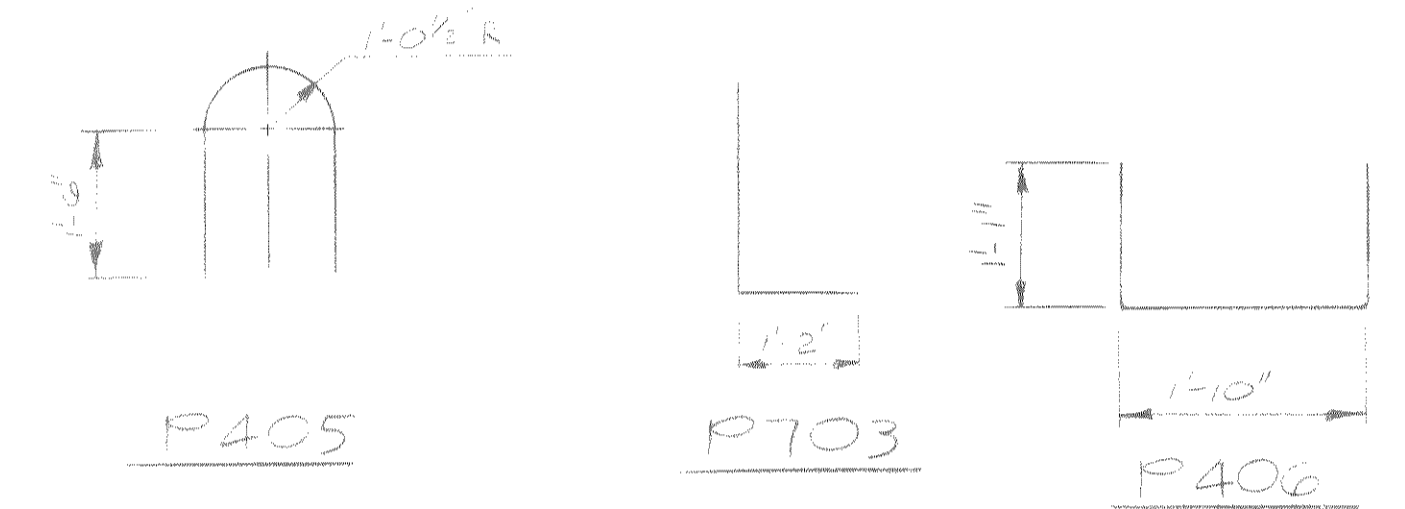
P508 BARS MAY BE PLACED AFTER THE CONCRETE IS POURED BUT BEFORE THE INITIAL SET HAS TAKEN PLACE



BILL OF BARS (BOTH PIERS) 14040 #

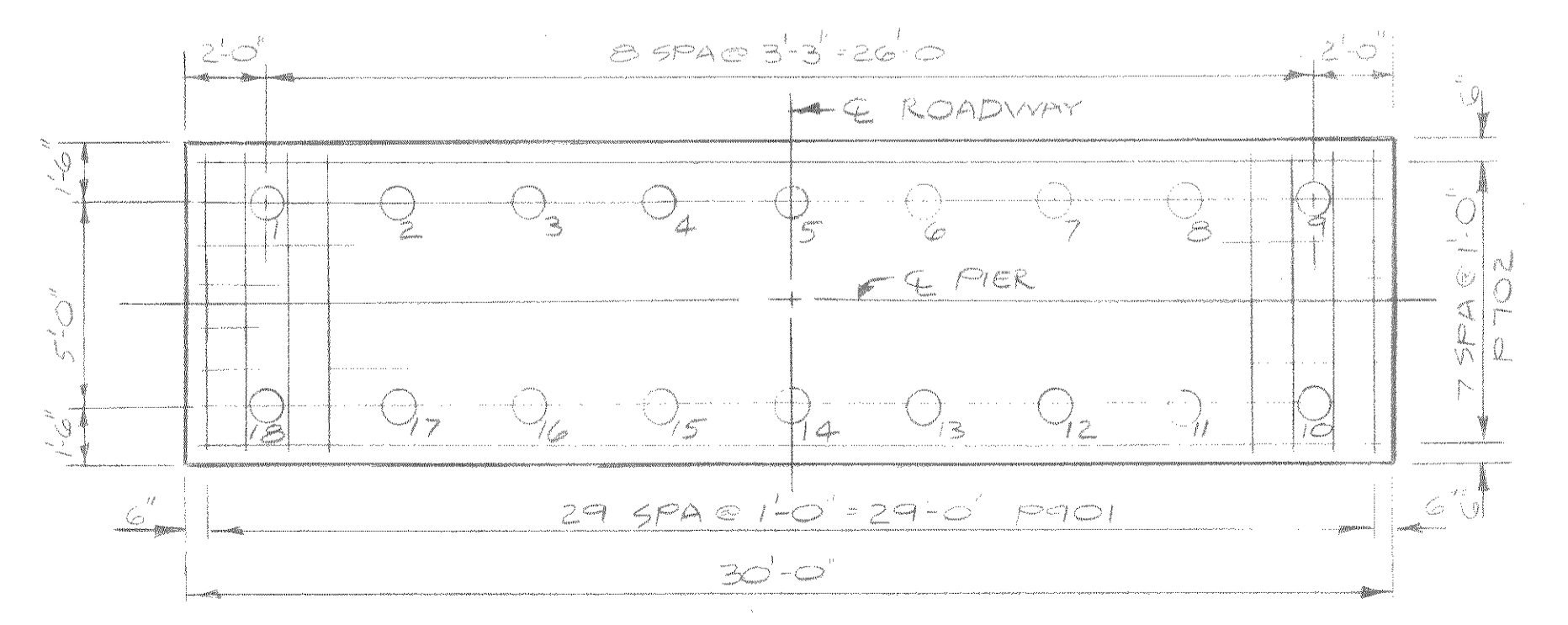
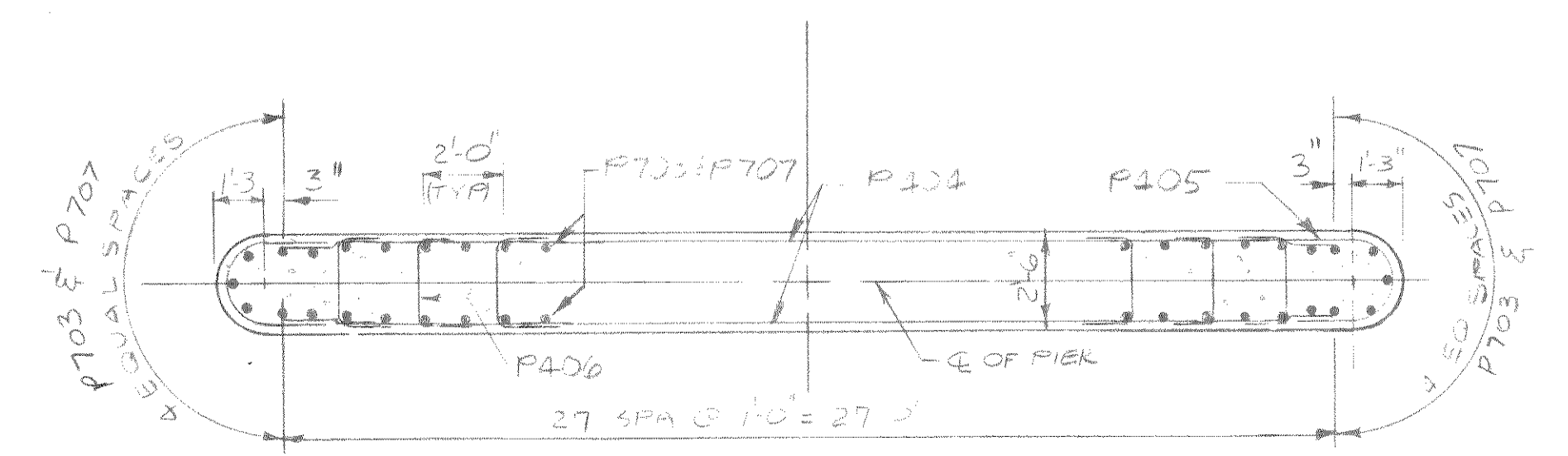
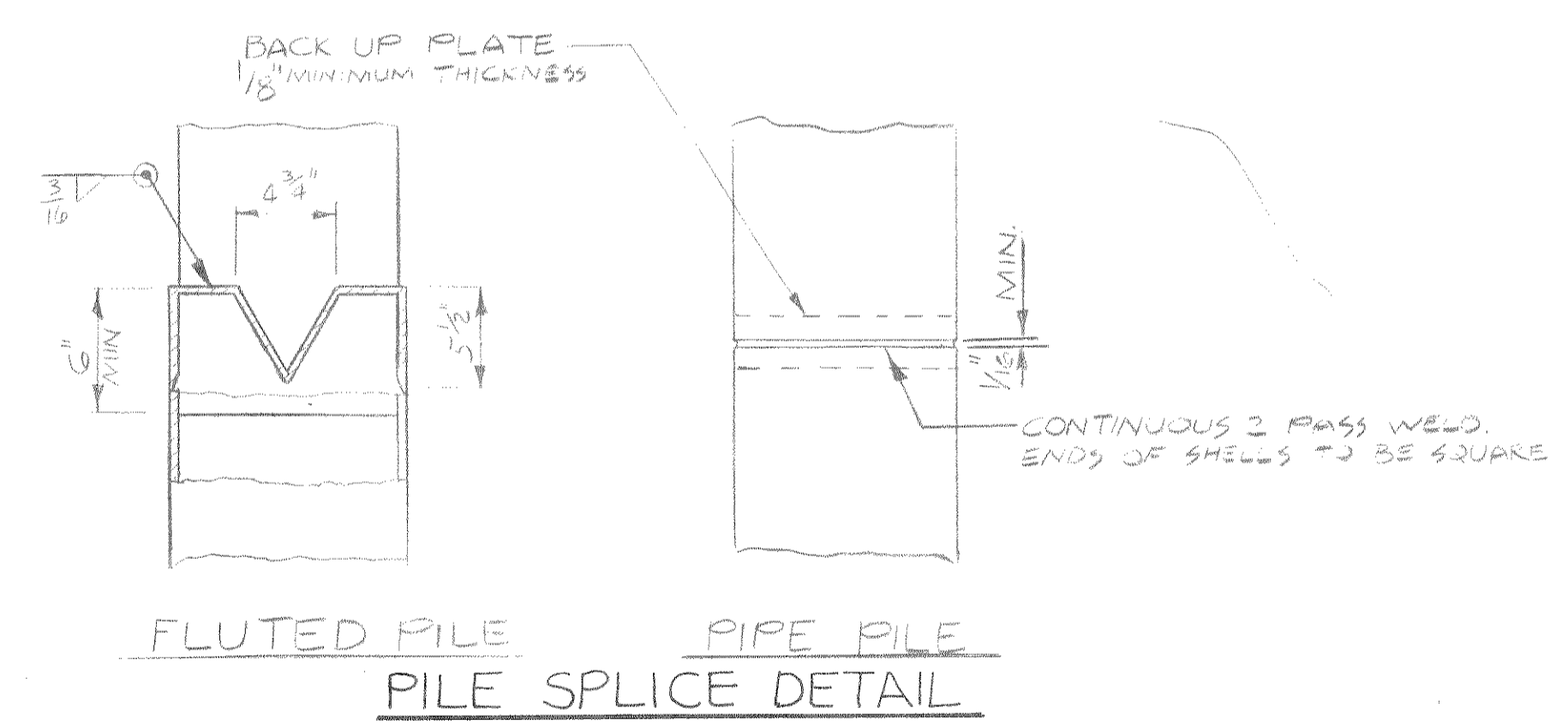
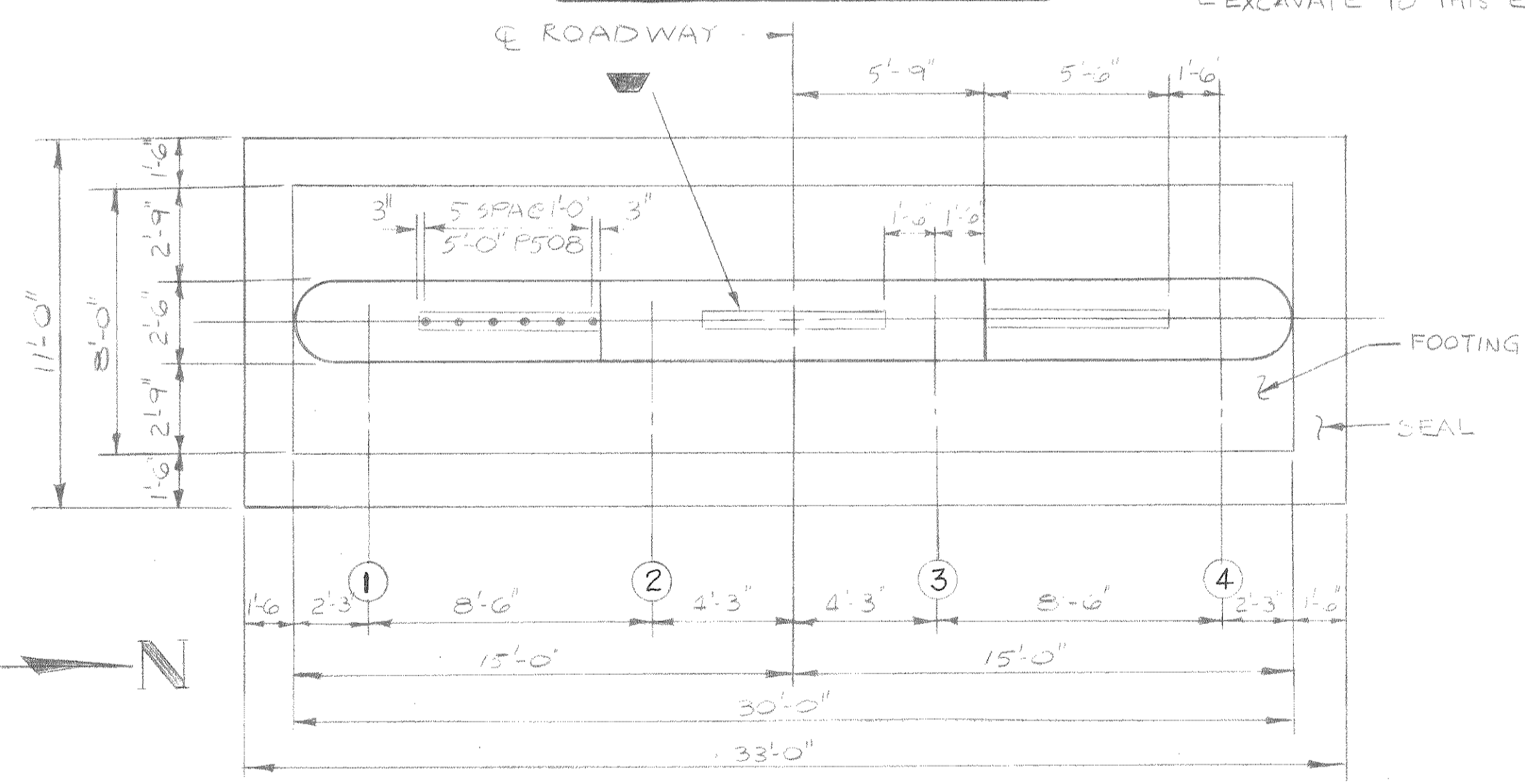
MARK	NO. REQ'D	LENGTH	BENT	LOCATION
P901	60	7'-8"		FOOTING HORIZ.
P702	18	29'-0"		" " " "
P703	128	6'-0"	X	" " SHAFT DOWELS VERT
P404	70	27'-2"		" " " " HORIZ
P405	76	6'-5"	X	" " " " " "
P406	690	3'-10"	X	" " " " " "
P707	128	22'-8"		SHAFT VERT
P508	36	2'-6"		" @ TOP " "

THE FIRST DIGIT OF THE BAR MARK SIGNIFIES THE BAR SIZE DIMENSIONS IN THE BENDING DETAILS ARE OUT TO OUT OF BAR.



NOTES:
PIERS SHALL BE SUPPORTED ON 10 3/4" ϕ CAST-IN-PLACE CONCRETE PILES DRIVEN TO 30 TONS/PILE. ESTIMATED LENGTH OF PILES: PIER 1: 60 FT/PILE. PIER 2: 65 FT/PILE.

- KEYED CONSTRUCTION JOINT FORMED BY SURFACED, BEVELED 2X6
- KEYED CONSTRUCTION JOINT FORMED BY SURFACED, BEVELED 4"X10" X 26'-8" LONG.



NO.	DATE	REVISION	BY
MEAD AND HUNT, INC. CONSULTING ENGINEERS MADISON, WISCONSIN			
STATE OF WISCONSIN DEPARTMENT OF TRANSPORTATION DIVISION OF HIGHWAYS			
STRUCTURE		B-35-78	
CONST. SPEC.	1975	DRAWN BY	B.G.C.
		PLANS CHECKED	R.I.S.
PIERS			SHEET 4 OF 8
			X60128