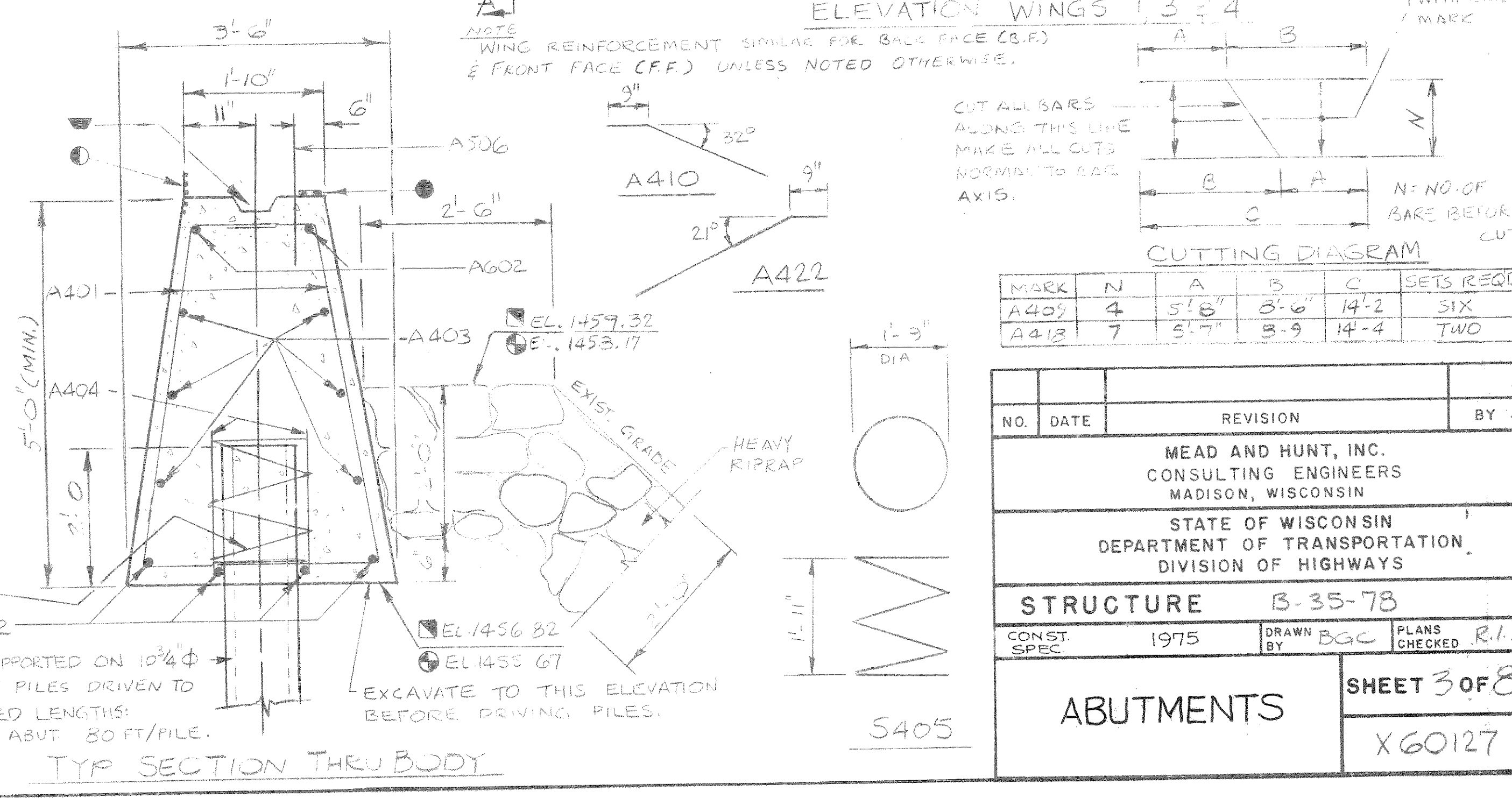
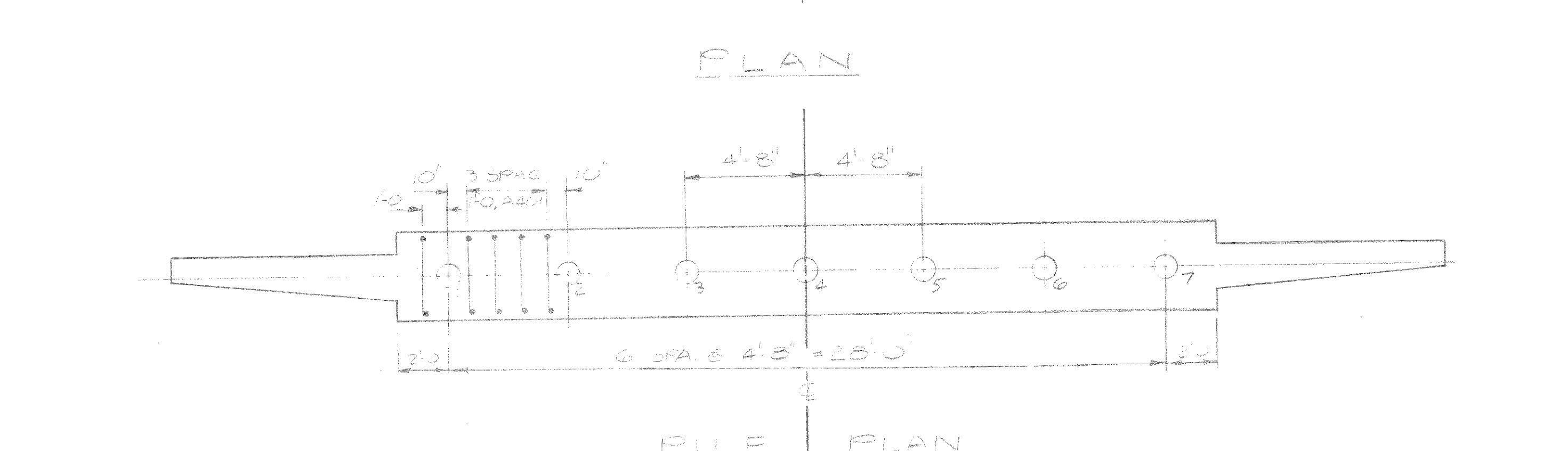
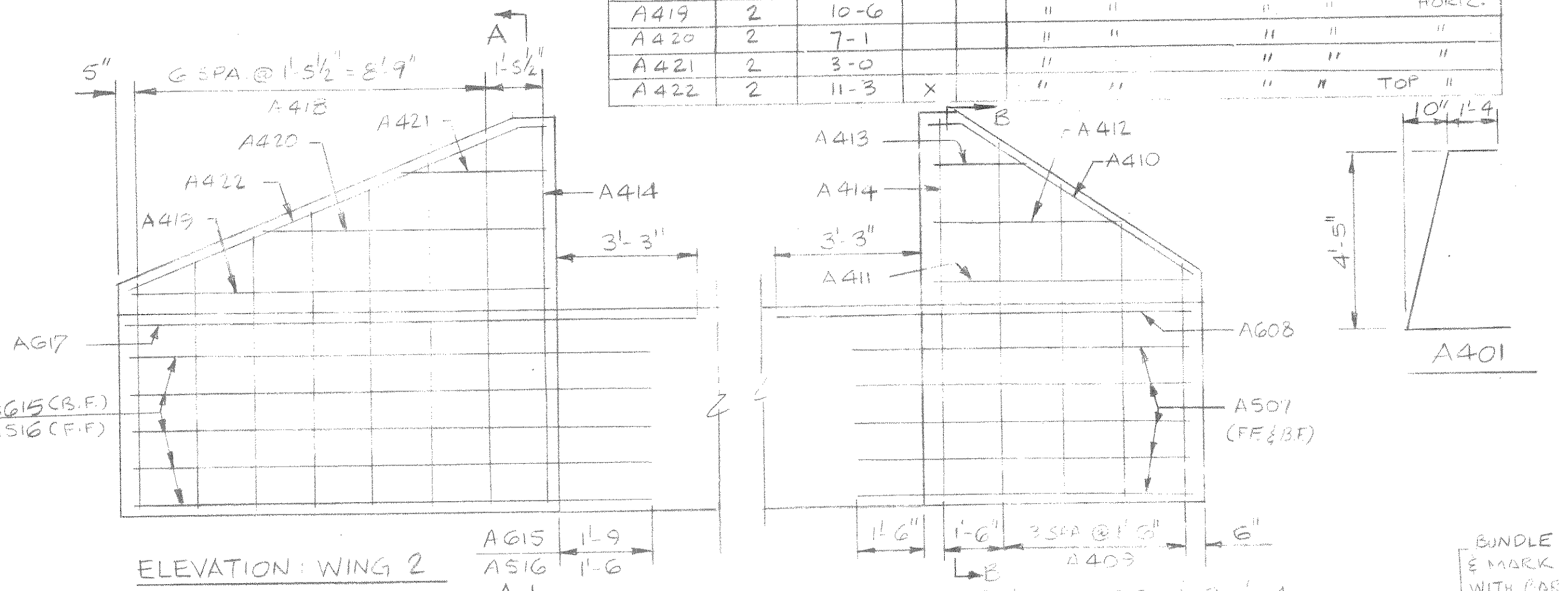
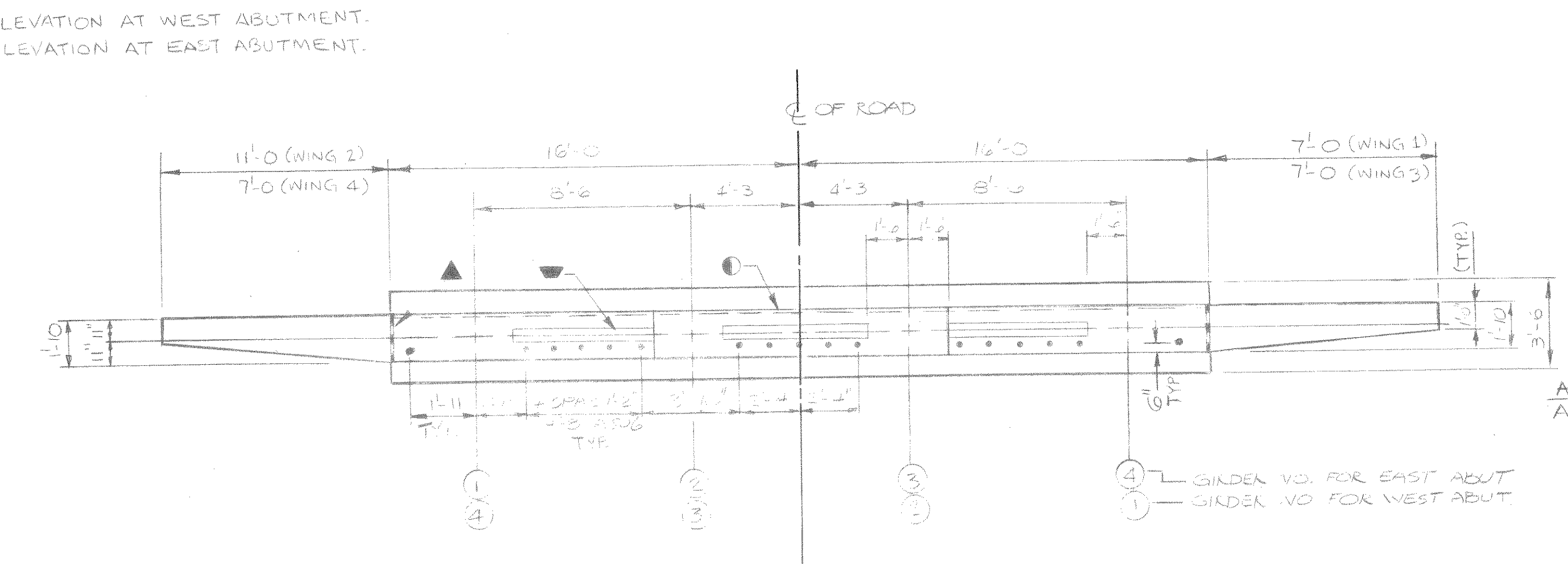
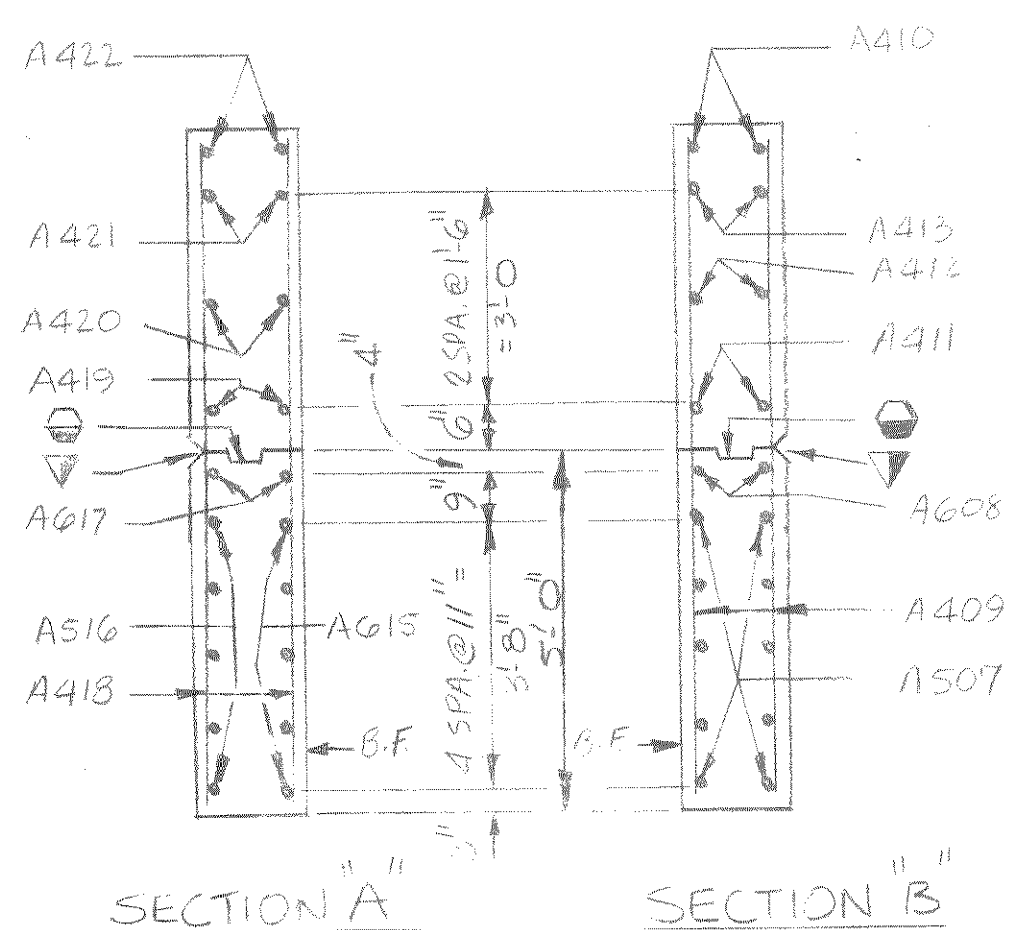
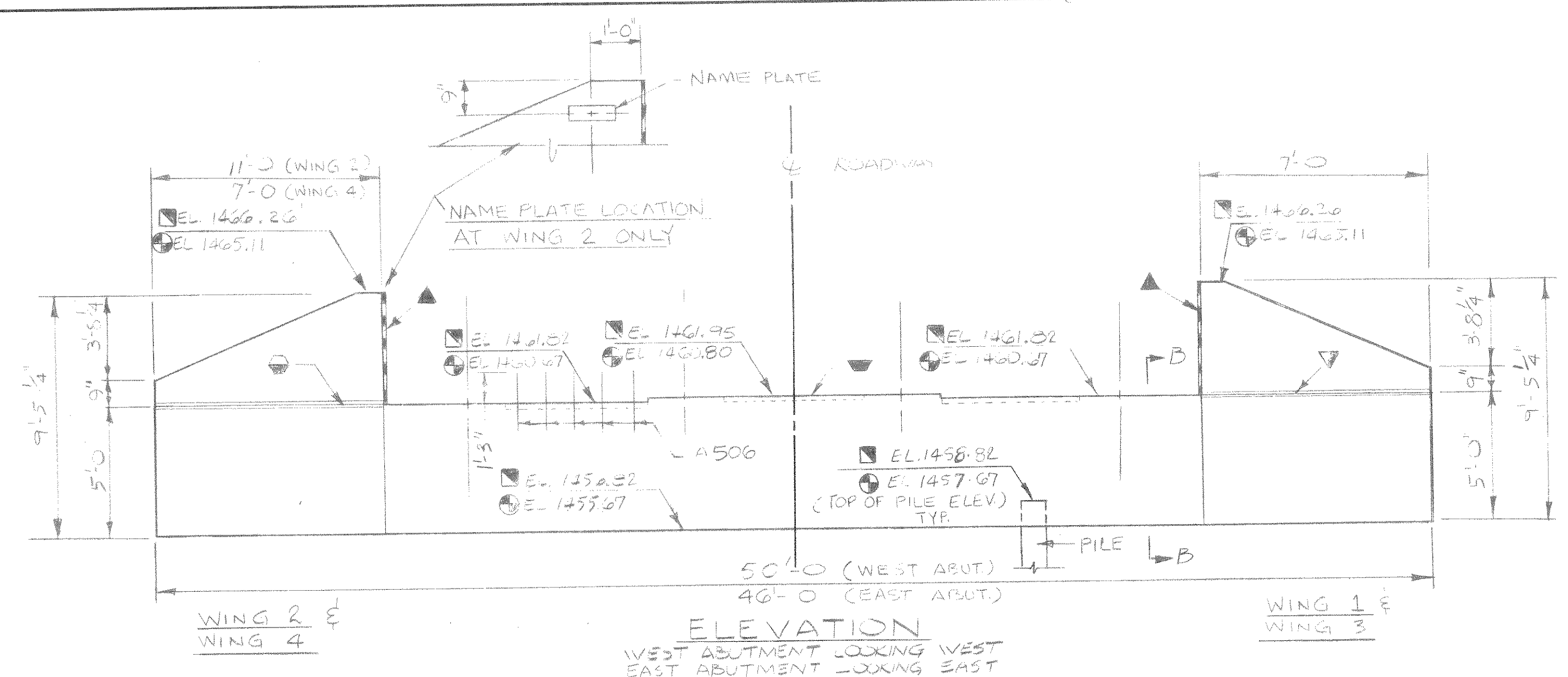


NOTE:
FIRST DIGIT OF THE BAR MARK SIGNIFIES THE BAR SIZE.
DIMENSIONS IN BENDING DETAILS ARE OUT TO OUT OF BAR.

BILL OF BARS (BOTH ABUTS.) 2670 #

MARK	NO REQ'D	LENGTH	BENT	CUT	LOCATION	VERT
A401	104	7'-11"	X		BODY - STIRRUPS	VERT
A402	12	3'-6"			" TOP & BOT.	HORIZ
A403	12	3'-6"			" "	"
A404	28	2'-3"			" @ PILES	VERT
A405	14	28'-0"			" "	HORIZ
A506	34	2'-8"			" - TOP BOWELS	VERT
A507	30	8'-3"			WINGS 1, 3 & 4 F.F. & B.F.	HORIZ.
A608	8	10'-0"			" " " " " "	"
A409	12	1'-2"	X		" " " " " "	VERT
A410	6	7'-6"	X		" " " " " "	TOP. HORIZ.
A411	6	6'-6"			" " " " " "	"
A412	6	4'-6"			" " " " " "	"
A413	6	2'-1"			" " " " " "	"
A414	8	8'-11"			" - ALL	VERT
A615	5	12'-6"			WING 2 B.F.	HORIZ.
A516	5	12'-3"			" " F.F.	"
A617	2	14'-0"			" " F.F. & B.F.	"
A418	7	14'-4"	X		" " " " " "	VERT.
A419	2	10'-6"			" " " " " "	HORIZ.
A420	2	7'-1"			" " " " " "	"
A421	2	3'-0"			" " " " " "	"
A422	2	11'-3"	X		" " " " " "	TOP "



- NOTES:
- ▲ 1/2" FILLER AND SEALER - SEAL ALL EXPOSED HORIZ AND VERT. SURFACES OF 1/2" FILLER WITH NON-STAINING GREY NON-DITUMINOUS JOINT SEALER (1" DEEP AND HOLD 1/2" BELOW SURFACE OF CONCRETE.)
 - ▼ KEYWAY CONST. JOINT - FORMED BY SURFACED, BEVELED 2 X 6
 - POLYVINYL CHLORIDE WATER STOP - TO EXTEND BETWEEN WINGS TO BE FLUSH WITH SURFACE OF CONCRETE - SEE DETAIL ON SHEET 7
 - OPTIONAL CONST. JOINT - FORMED BY SURFACED BEVELED 2 X 6 KEYWAY
 - ▽ 3/4" V GROOVE IN F.F. OF WING WALL ONLY NOT REQ'D IF CONSTR. JT. IS NOT USED
 - 3/4" FILLER - 3" WIDE AND TO EXTEND BETWEEN GIRDERS & WINGS

A506 BARS MAY BE PLACED AFTER CONCRETE IS POURED, BUT BEFORE INITIAL SET HAS TAKEN PLACE

SEE SHEET 4 FOR PILE SLICE DETAILS

ABUTMENTS SHALL BE SUPPORTED ON 10 3/4" φ CAST-IN-PLACE CONCRETE PILES DRIVEN TO 35 TONS/PILE. ESTIMATED LENGTHS: W.A.B.T. 90 FT/PILE, E.ABUT. 80 FT/PILE.

EXCAVATE TO THIS ELEVATION BEFORE DRIVING PILES.

CUTTING DIAGRAM

MARK	N	A	B	C	SETS REQ'D
A409	4	5'-8"	3'-6"	14'-2"	SIX
A418	7	5'-7"	3'-9"	14'-4"	TWO

NO.	DATE	REVISION	BY
<p>MEAD AND HUNT, INC. CONSULTING ENGINEERS MADISON, WISCONSIN</p> <p>STATE OF WISCONSIN DEPARTMENT OF TRANSPORTATION DIVISION OF HIGHWAYS</p> <p>STRUCTURE B-35-78</p> <p>CONST. SPEC. 1975 DRAWN BY BGC PLANS CHECKED R.I.S.</p> <p>ABUTMENTS</p>			

SHEET 3 OF 8
X60127