

9405-1-70

GENERAL NOTES

DRAWINGS SHALL NOT BE SCALED.
 BAR STEEL REINFORCEMENT SHALL BE EMBEDDED 2" CLEAR UNLESS OTHERWISE SHOWN OR NOTED.
 ELASTOMERIC BEARING PADS NEED NOT BE INDIVIDUALLY MOLDED PROVIDED THE CUT EDGES ARE SMOOTH AND TRUE.
 FILLER SHALL CONFORM TO A.A.S.H.T.O. DESIGNATION M.133 TYPE I OR M23. THE SLOPE OF THE FILL IN FRONT OF THE ABUTMENTS SHALL BE COVERED WITH HEAVY RIPRAP TO THE EXTENT SHOWN ON THIS SHEET AND SHEET 3. ALSO SEE APPROACH PLANS FOR EXTENT OF HEAVY RIPRAP.

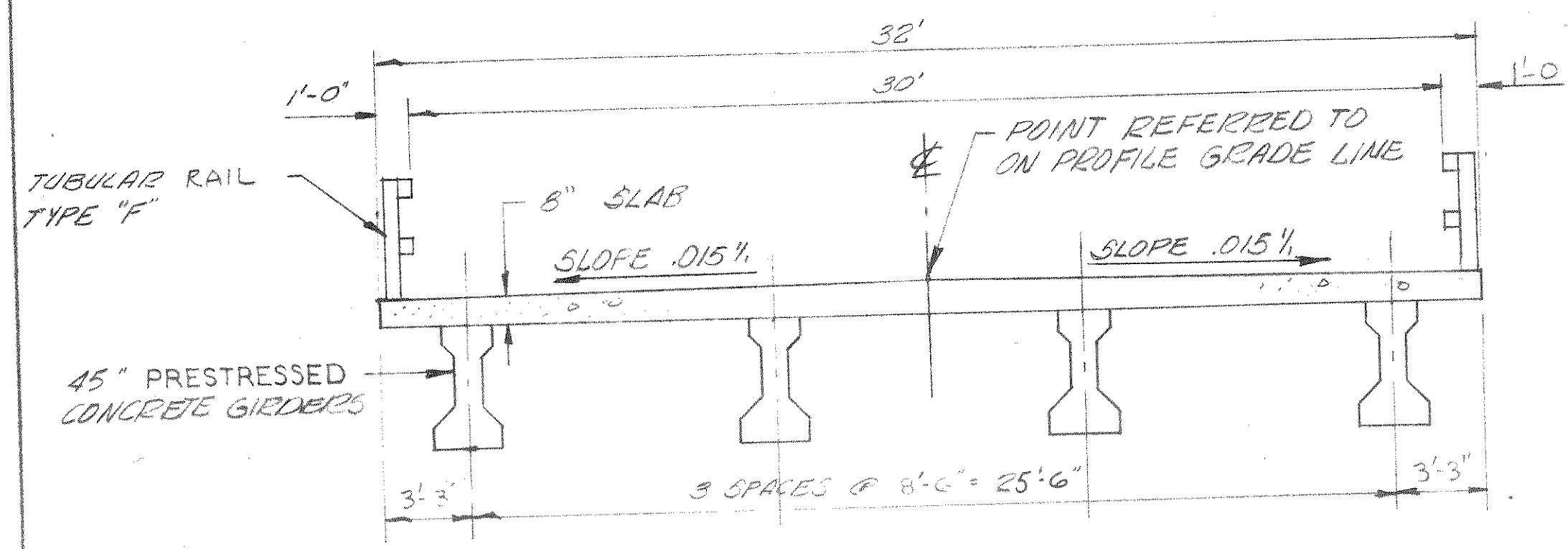
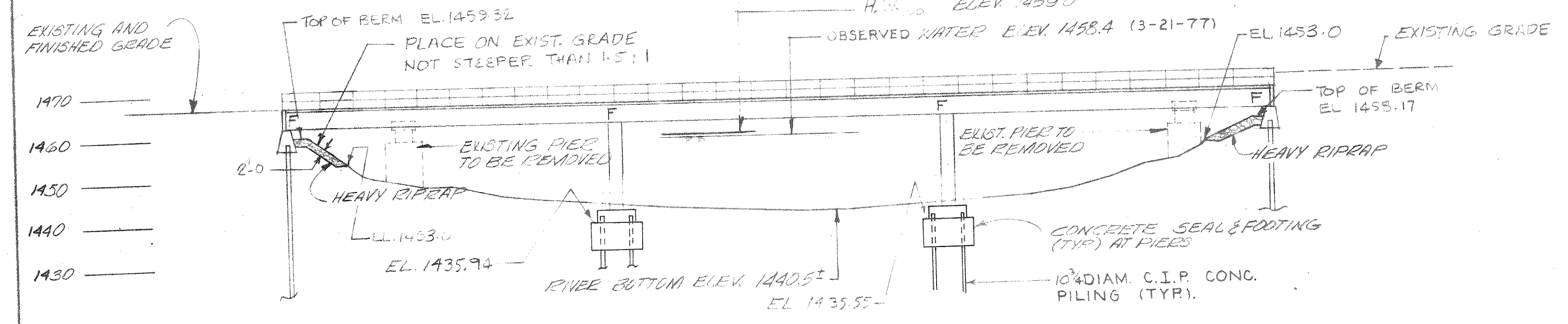
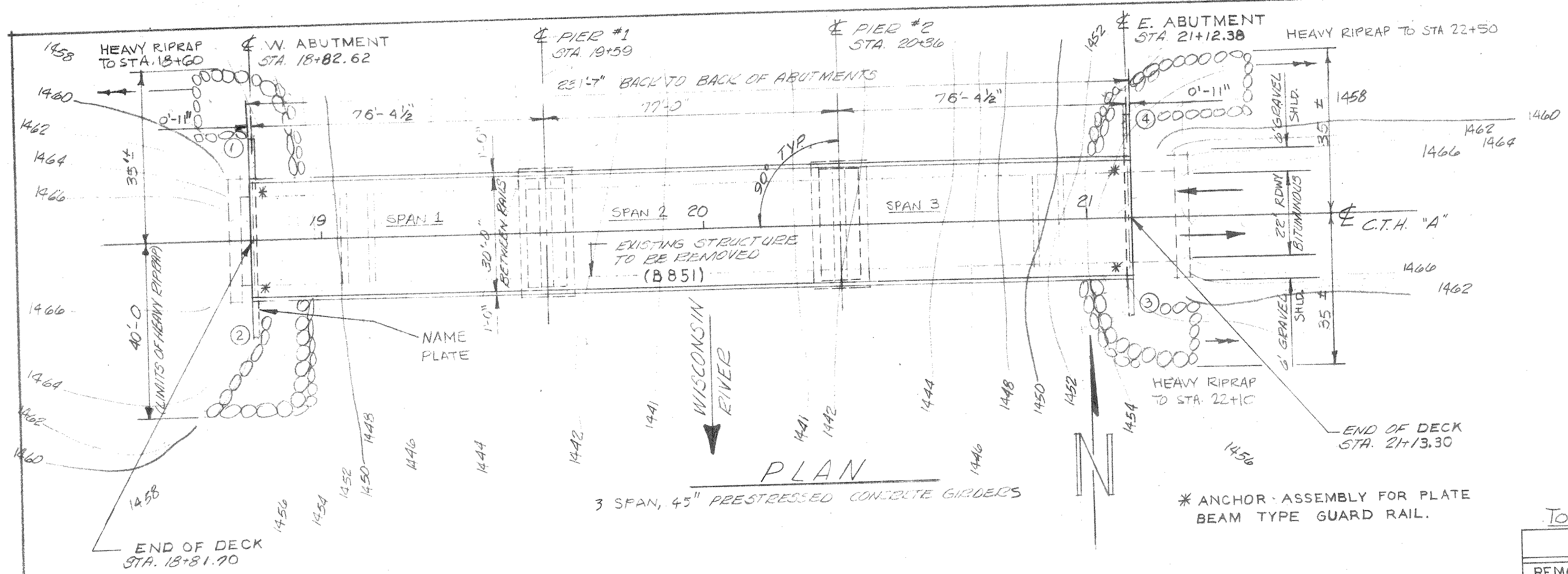
FOUNDATION DATA

ABUTMENT AND PIERS SHALL BE SUPPORTED ON 10 3/4" DIAM. CAST-IN-PLACE CONCRETE PILING.

LOCATION	EST. LENGTH/PILE	REQ. CAPACITY PER PILE
W. ABUT.	90 FT	35 TONS
PIER #1	60 FT	30 TONS
PIER #2	65 FT	30 TONS
E. ABUT.	80 FT	35 TONS

TOTAL ESTIMATED QUANTITIES:

BID ITEMS	UNIT	SUPER.	W. ABUT.	PIER #1	PIER #2	E. ABUT.	TOTAL
REMOVE OLD BRIDGE	L.S.	—	—	—	—	—	1
EXCAVATION FOR STRUCTURES	L.S.	—	—	—	—	—	1
CONCRETE MASONRY SEAL	C.Y.	—	—	93.3	94.7	—	188
CONCRETE MASONRY	C.Y.	220.6	23.5	85	85	21.9	436
PRESTRESSED GIRDER, I TYPE, 45"	L.F.	921	—	—	—	—	921
HIGH STRENGTH BAR STEEL REINF.	LBS.	55390	1400	7020	7020	1270	72100
BEARING PADS, ELASTOMERIC	SQ. FT.	38	—	—	—	—	38
CAST-IN-PLACE CONCRETE PILING DELIVERED AND DRIVEN, 10 3/4" DIAM.	L.F.	—	630	1080	1170	560	3440
STRUCTURAL CARBON STEEL	LBS.	320	—	—	—	—	320
TUBULAR RAILING, TYPE "F"	L.S.	—	—	—	—	—	1
HEAVY RIPRAP	C.Y.	—	110	—	—	—	390
NON-BID ITEMS							
P.V.C. WATERSTOP	L.F.	—	32	—	—	—	64
FILLER	SIZE	—	—	—	—	—	1/2", 3/4"



DESIGN DATA

LIVE LOAD HS 20
 ALLOWABLE DESIGN STRESSES:
 CONCRETE - SLAB $f_c = 4000$ psi
 - ALL OTHER $f_c = 3500$ psi
 BAR STEEL REINF. - GRADE 60 $F_y = 60,000$ psi
 45" PRESTRESSED CONC. GIRDERS:
 CONCRETE $f_c = 6000$ psi
 STRANDS - 1/2" ϕ ULTIMATE TENSILE - 270,000 psi
 STRUCTURE IS DESIGNED FOR A FUTURE WEARING SURFACE OF 20 P.S.F.

HYDRAULIC DATA

$Q_{100} = 7200$ CFS
 $V_{100} = 2.5$ FPS
 WATERWAY AREA = 2850 Sq. Feet
 DRAINAGE AREA = 1269 Sq. Mile
 HW = 1459.0

TRAFFIC DATA

A.D.T. = * 500
 R.D.S. = 50 mph

RATING:

INVENTORY = HS22
 OPERATING = HS40

* ESTIMATE BY LINCOLN COUNTY HIGHWAY DEPARTMENT

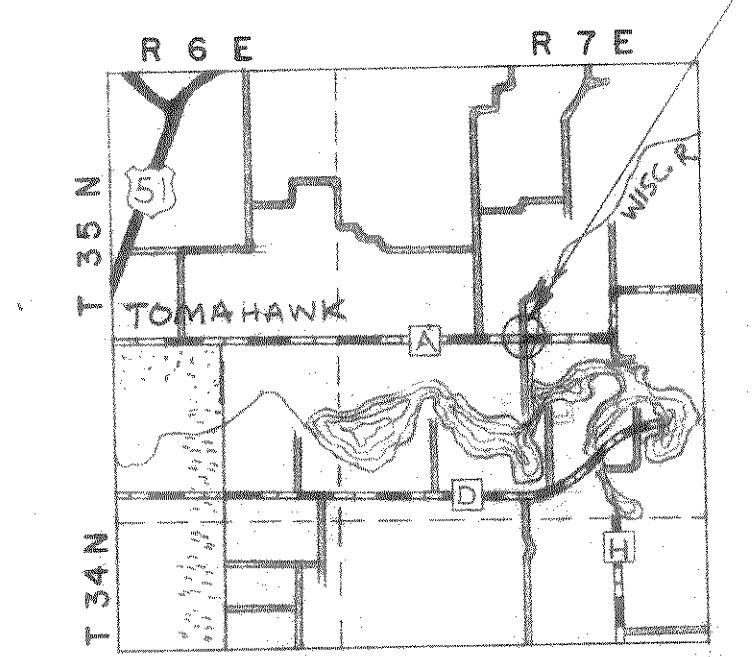
LIST OF DRAWINGS

- 1. GENERAL PLAN X 60125
- 2. SUBSURFACE EXPLORATION X 60126
- 3. ABUTMENTS X 60127
- 4. PIERS X 60128
- 5. PRESTRESSED GIRDERS DETAILS X 60129
- 6. SUPER STRUCTURE X 60130
- 7. SUPERSTRUCTURE X 60131
- 8. TUBULAR RAILING, TYPE F X 60132

BENCH MARK

NO.	STATION	DESCRIPTION	ELEV.
1	15+14	R.R. SPIKE IN POWER POLE 48.0' RT.	1467.90
2	25+98	R.R. SPIKE IN P.P.	27.0' RT. 1476.16

STRUCTURE B-35-78



NO.	DATE	REVISION	BY
STATE OF WISCONSIN DEPARTMENT OF TRANSPORTATION DIVISION OF HIGHWAYS			
STRUCTURE B-35-78 C.T.H. "A" OVER WISCONSIN RIVER			
COUNTY LINCOLN		TOWN OF KING	
DESIGN SPEC. A.A.S.H.O. INTERIMS 1973 8	LOAD HS20	CONST. SPEC. 1975	
DESIGNED BY R.I.S.	CHECKED G.R.K.	DRAWN BY D.J.K.	PLANS CHECKED R.I.S.
APPROVED CHIEF BRIDGE ENGINEER			DATE
GENERAL PLAN			SHEET 1 OF 8 X 60125