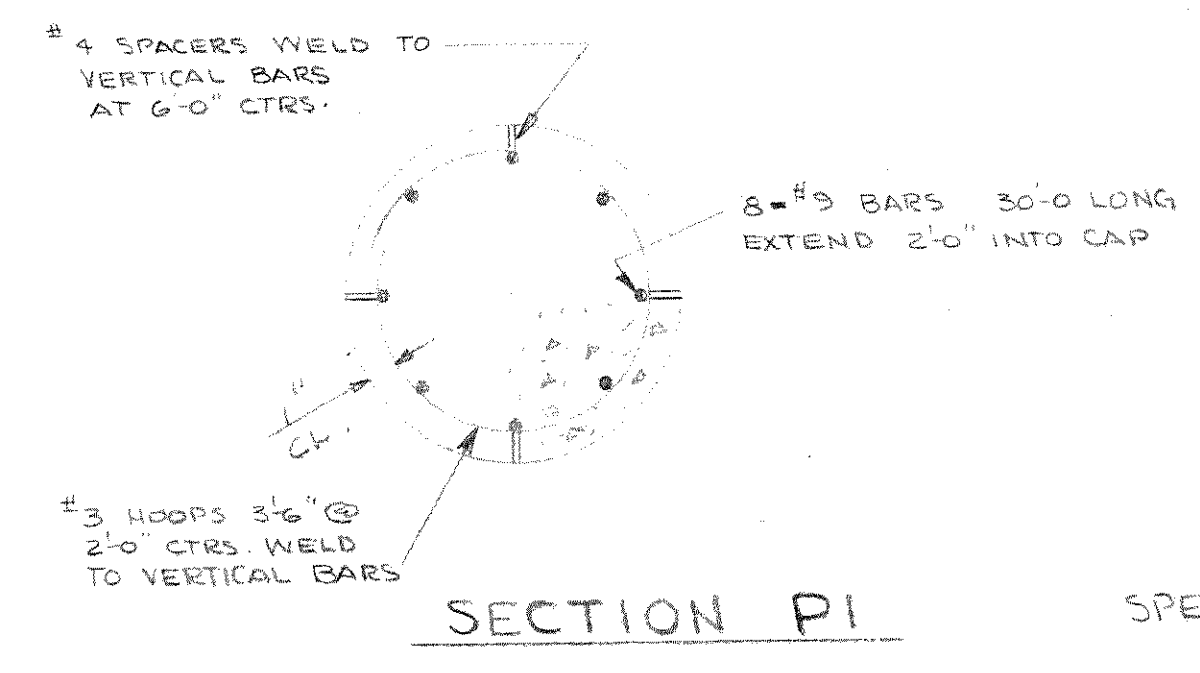
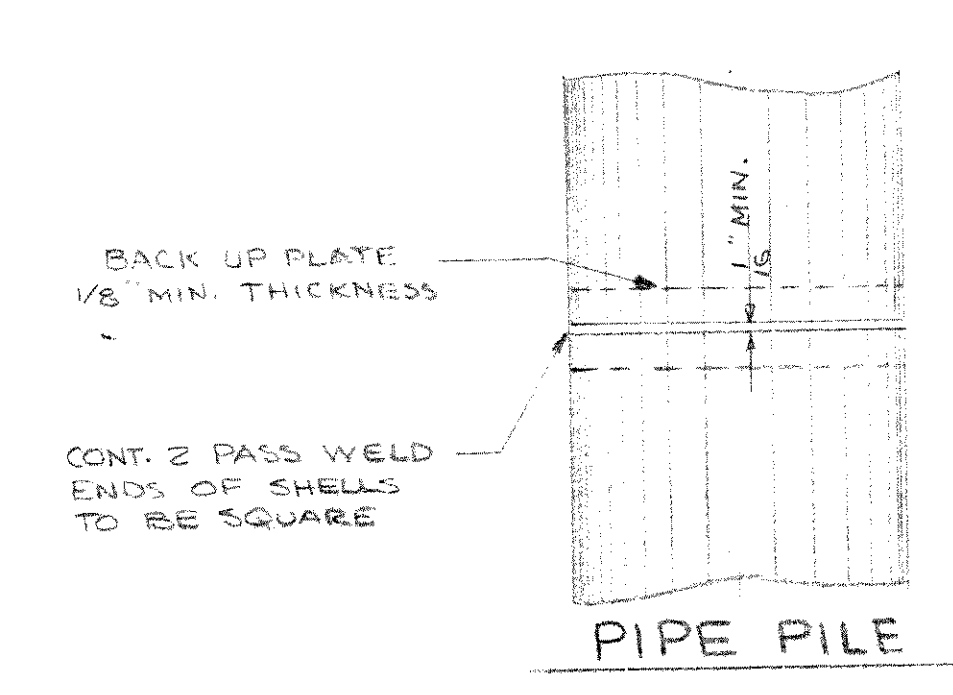
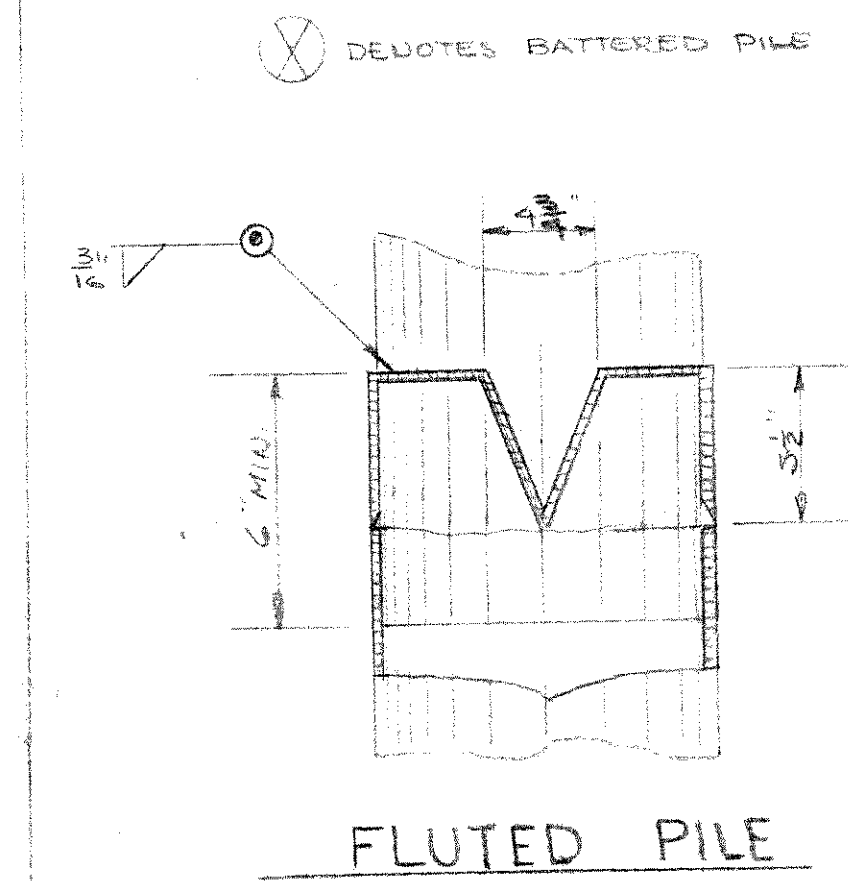
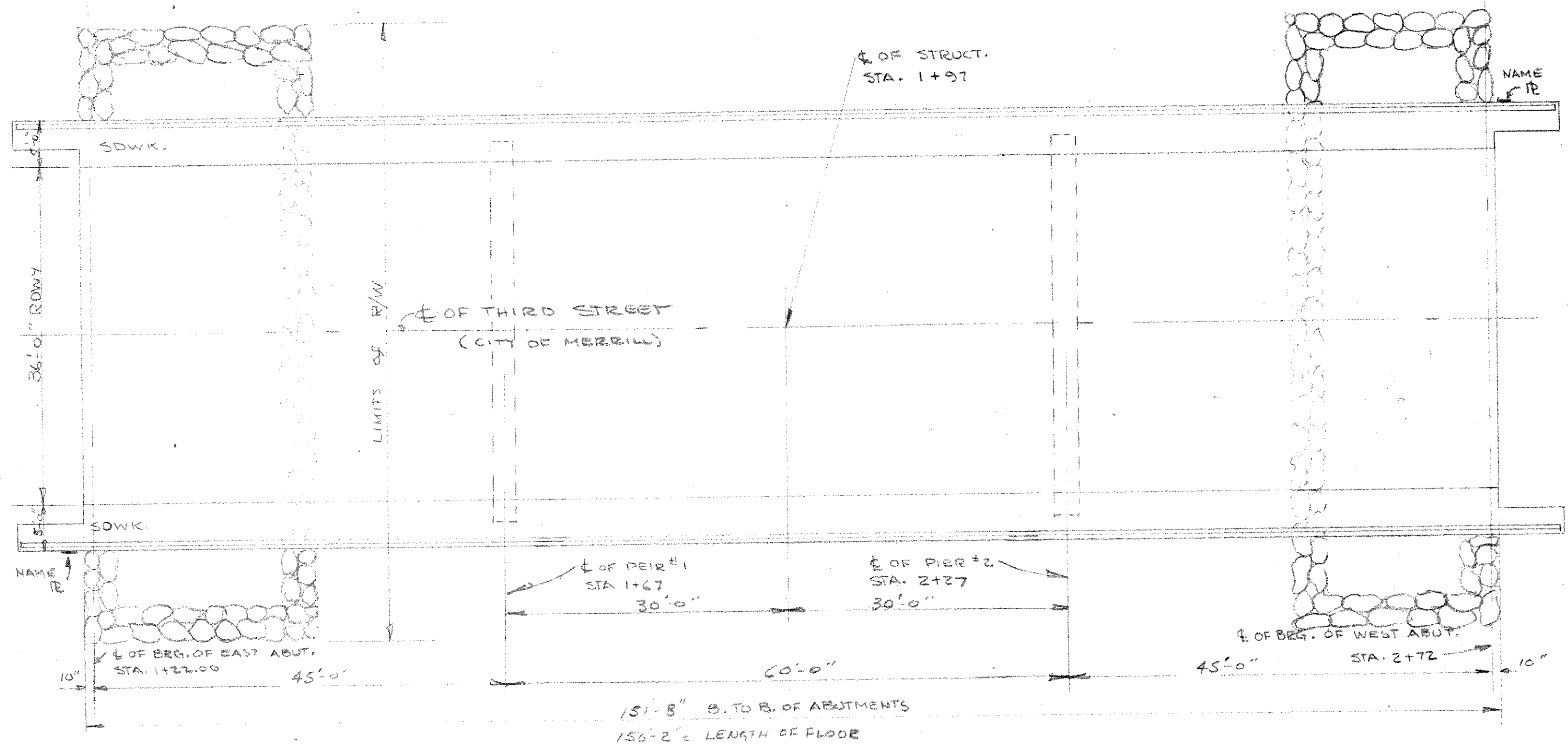
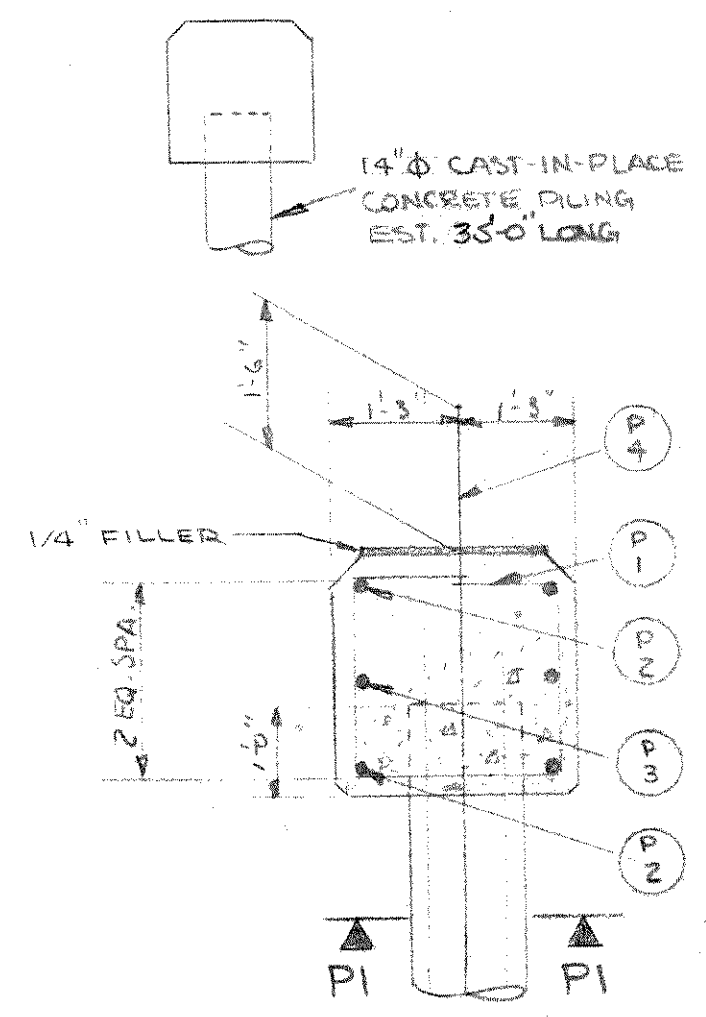
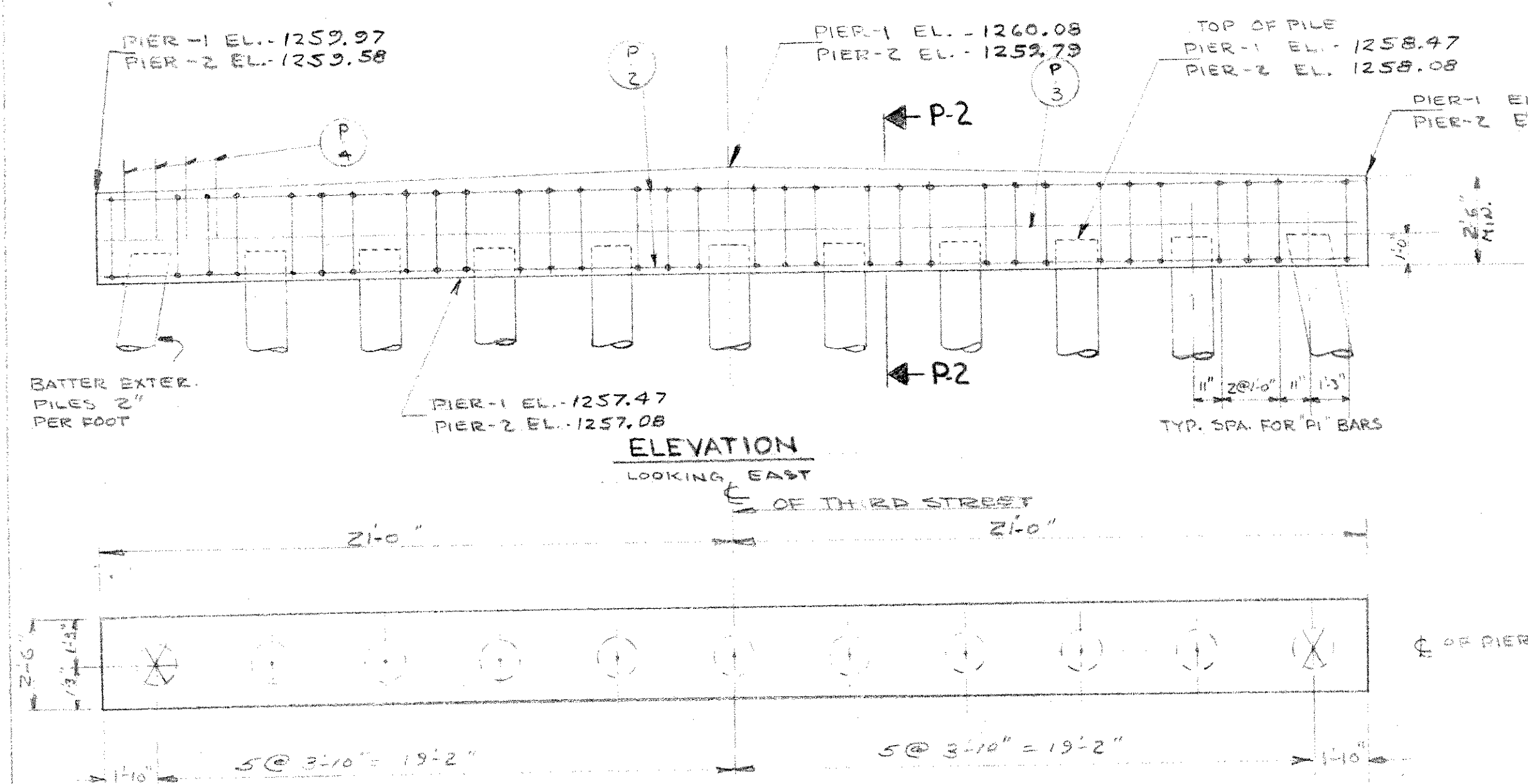
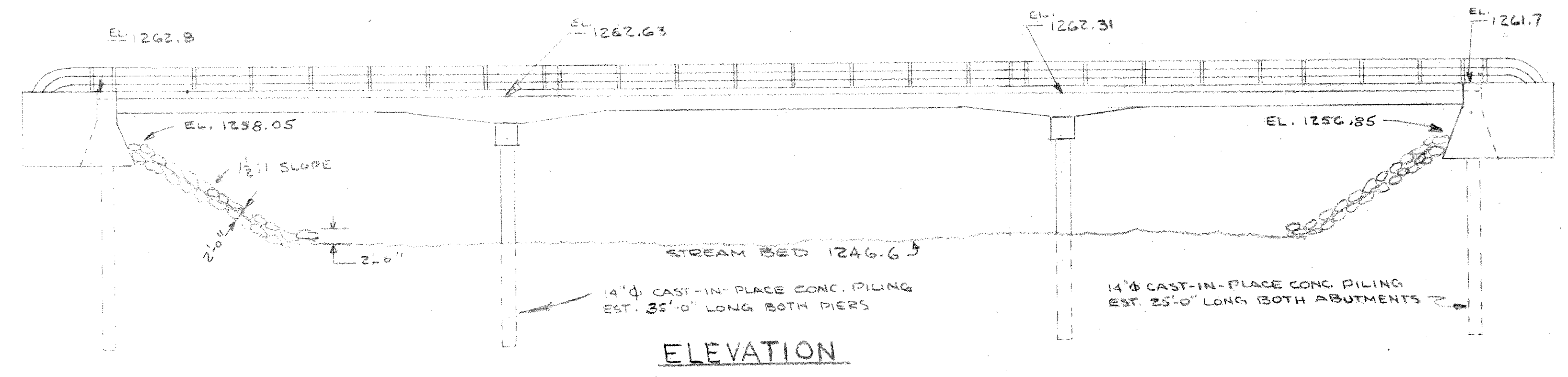
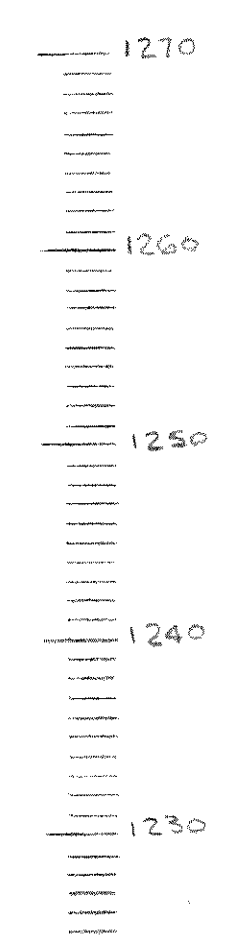
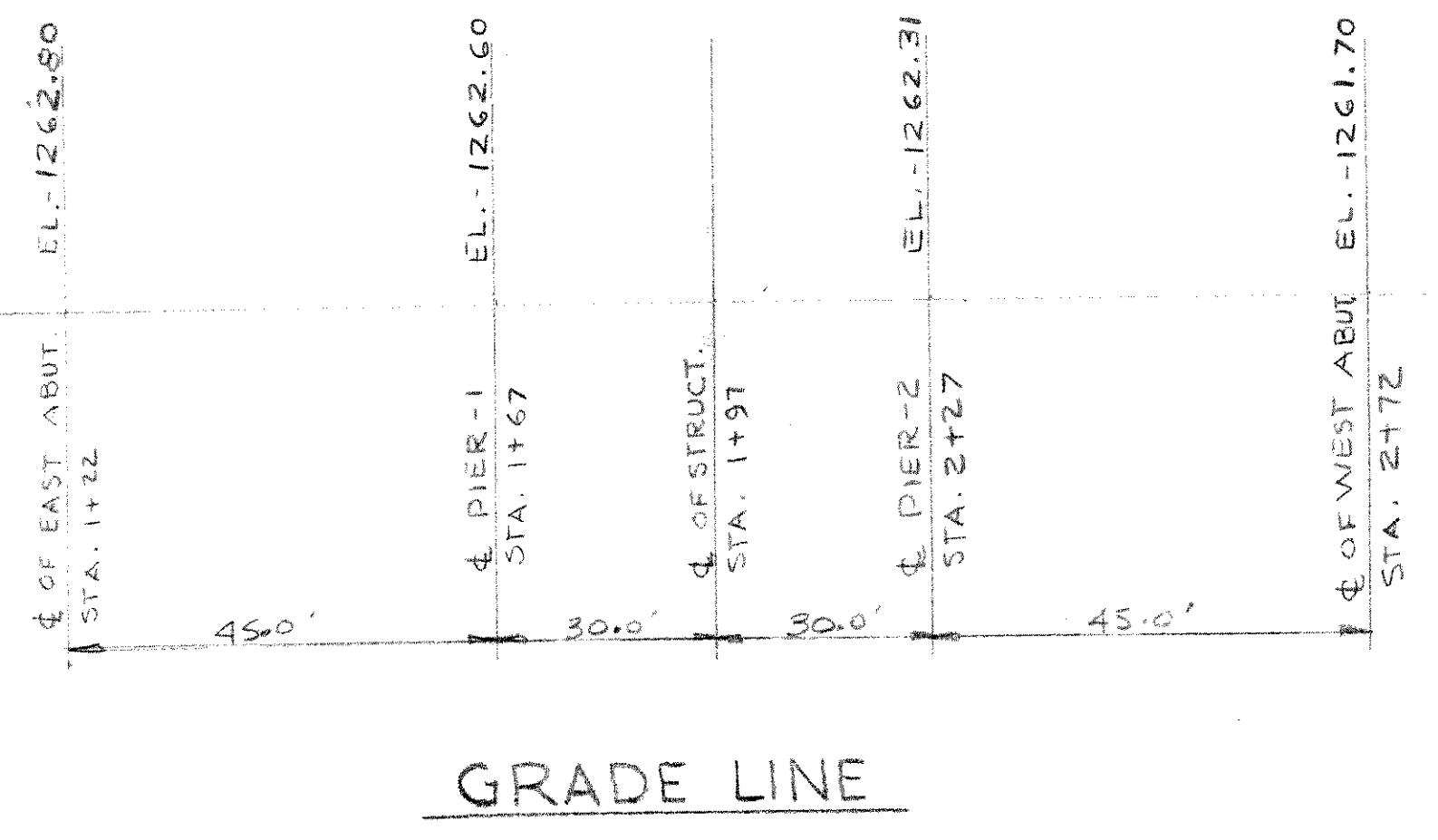


COUNTY	ROUTE & SECTION	CLASS & AGREEMENT	S.P.R. DIVISION	PROJECT	SHEET NUMBER	TOTAL SHEETS
35.9	0-0	3.6	4		4	

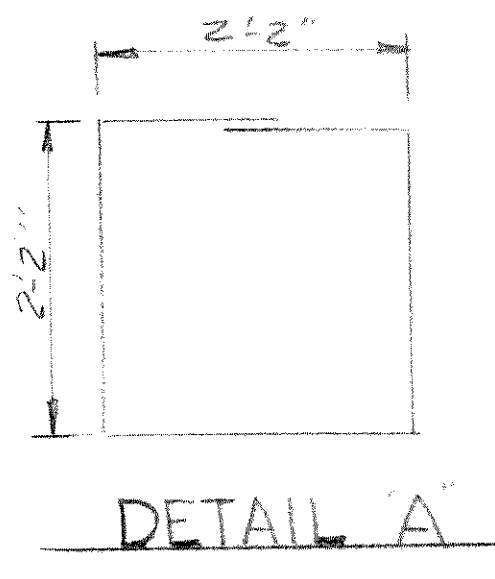


**PILE SPLICE DETAILS**

**BILL OF BARS**

DIMENSIONS IN BENDING DETAILS ARE OUT TO OUT **1558** #

POUR MARK	NO	SIZE	LENGTH	SPACING	LOCATION	DET.
P1	64	4	9'-9"	SHOWN	CAP - STIRRUPS	A
P2	8	5	41'-6"	"	" - LONGITUDINAL	
P3	4	4	41'-6"	"	" - "	
P4	82	5	3'-0"	1-0	" & SUPERSTRUCTURE	



DRAWINGS SHALL NOT BE SCALED.  
 ALL CONCRETE MASONRY SHALL BE GRADE 'AA'.  
 BEVEL EXPOSED EDGES OF CONCRETE 1" UNLESS OTHERWISE SPECIFIED.  
 BAR STEEL REINFORCEMENT SHALL BE IMBEDDED 2" CLEAR UNLESS SHOWN OR NOTED.  
 THE USE OF STRUCTURAL GRADE BAR STEEL REINFORCEMENT IS PROHIBITED.  
 THE ABUTMENTS SHALL BE RIPRAPPED AS SHOWN ABOVE IN ELEVATION AND ON DWG. NE

PILING AT PIERS AND ABUTMENTS SHALL BE 14" CAST-IN-PLACE CONCRETE PILING ESTIMATED 35'-0" AND 25'-0" LONG. PILING AT ABUTMENTS SHALL BE DRIVEN TO A MINIMUM BEARING VALUE OF 30 TONS PER PILE AND A MINIMUM BEARING VALUE OF 37 TONS PER PILE AT PIERS.

**EXISTING STRUCTURE**  
 SUPERSTRUCTURE (1-SPAN AT 134') Steel  
 STONE MASONRY ABUTMENTS

**NEW STRUCTURE**  
 THREE SPAN CONT. R.C. SLAB (45'-0", 60'-0", 45'-0") WITH A 36'-0" CLEAR RDWY. AND 2'-4" CLEAR SDWK. ON BOTH SIDES.  
 SUBSTRUCTURES - R.C. SILL TYPE ABUTTS. ON CAST-IN-PLACE PILES AND PIER CAP ON CAST-IN-PLACE PILES.

**TOTAL ESTIMATED QUANTITIES**

BID ITEMS	UNIT	SUPER.	PIERS	E. ABUT.	W. ABUT.	TOTAL
REMOVING OLD BRIDGE	L.S.	-	-	-	-	1
EXCAVATION FOR STRUCTURES	C.Y.	-	-	90'	70'	160'
GRANULAR BACKFILL	C.Y.	-	-	25'	30'	55'
CONCRETE MASONRY	C.Y.	389	20.2	26.1	26.1	461.4
BAR STEEL REINFORCEMENT	L.B.	84,252	1558	1236	1236	88,282
CAST-IN-PLACE CONC. PILING DELV.	L.F.	-	735	175	175	1085
CAST-IN-PLACE CONC. PILING DRIVEN	L.F.	-	680	170	170	1020
STEEL RAILING	L.F.	321	-	-	-	321
HEAVY RIPRAP	C.Y.	-	-	70	80	150
<b>NON-BID ITEMS</b>						
FILLER	SIZE	1/2 + 1/4	-	-	-	1/2 + 1/4
ALUM. OR ZINC PLATES	S.F.	11	-	-	-	11

**LIST OF DRAWING**

1. LAYOUT & PIERS	SHEET 4
2. SUPERSTRUCTURE	SHEET
3. RAILING	SHEET
4. ABUTMENTS	SHEET
5. SUBSURFACE EXPLORATION	SHEET

<b>LAYOUT &amp; PIERS</b>		
CO. LINCOLN	IN MERRILL	STA 1+22
SECTION 11	TOWN 31D	RANGE 6E
DESIGN DATE MARCH 27	LEADING 4-20	COUNTY SEWER
DATE 4-8-61	DESIGN W.J.W.	DR. W.J.W.
STRUCTURE B-35-12		SHEET 4