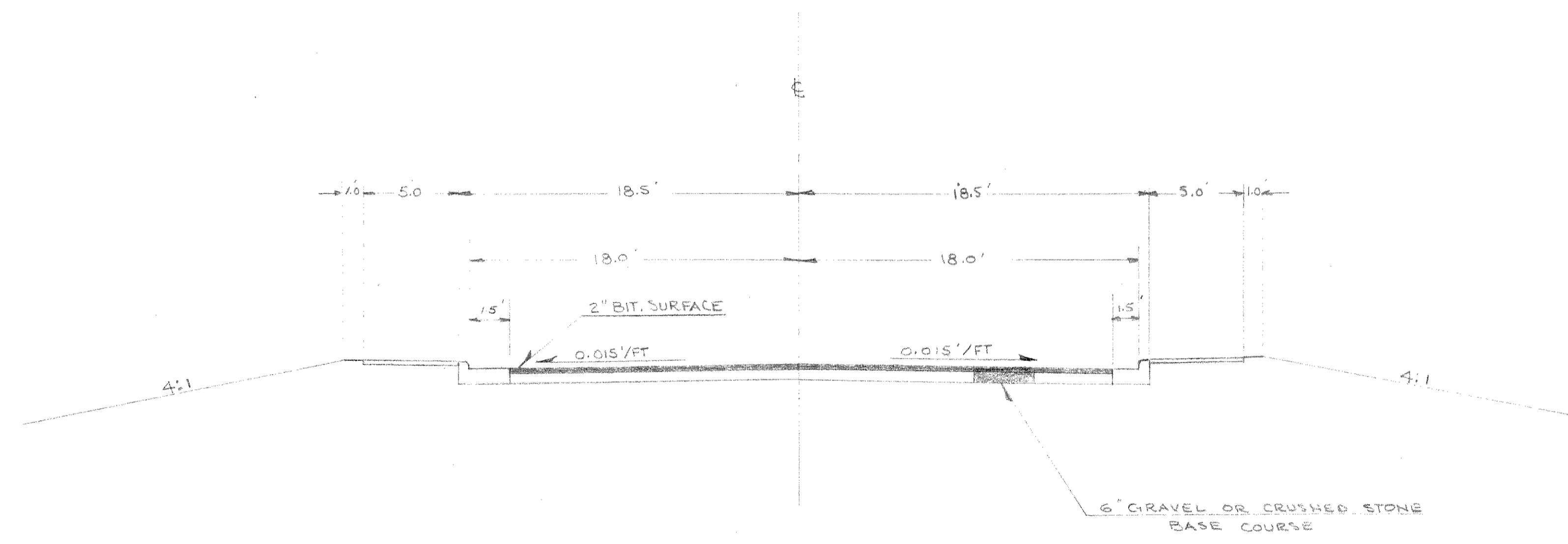


ESTIMATE OF QUANTITIES

THIS PROJECT IS TO BE EXECUTED UNDER THE STANDARD SPECIFICATIONS FOR ROAD AND BRIDGE CONSTRUCTION OF THE STATE HIGHWAY COMMISSION OF WISCONSIN — EDITION OF 1937 APPROVED AUGUST 9, 1937

STATION TO STATION	ITEM NO.	NET LENGTH OF CENTER LINE	REMOVING OLD BRIDGE STA.		EXCAVATION FOR STRUCTURES, BRIDGES,	GRANULAR BACK FILL	CONCRETE MASONRY, BRIDGES	BAR STEEL REINFORCEMENT, BRIDGES	CAST-IN-PLACE CONCRETE DELIVERED	CAST-IN-PLACE CONCRETE PILING DRIVEN	STEEL RAILING	HEAVY RIPRAP
			2104-2	2107-1								
	UNIT	LIN. FT.	L.S.	C.Y.	C.Y.	C.Y.	LB.	LIN. FT.	LIN. FT.	LIN. FT.	C.Y.	
STA. 1+15.83 — 2+78.17		162.33	1	160	55	461.4	88,282	1085	1020	321	150	



TYPICAL SECTION AT BRIDGE APPROACH